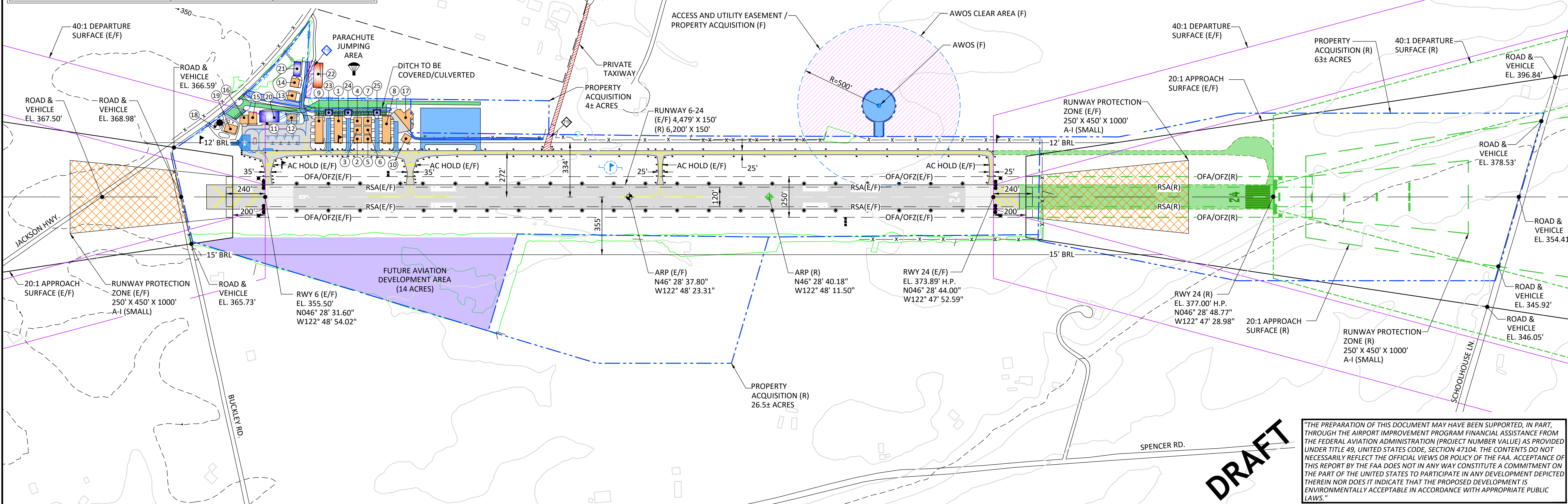
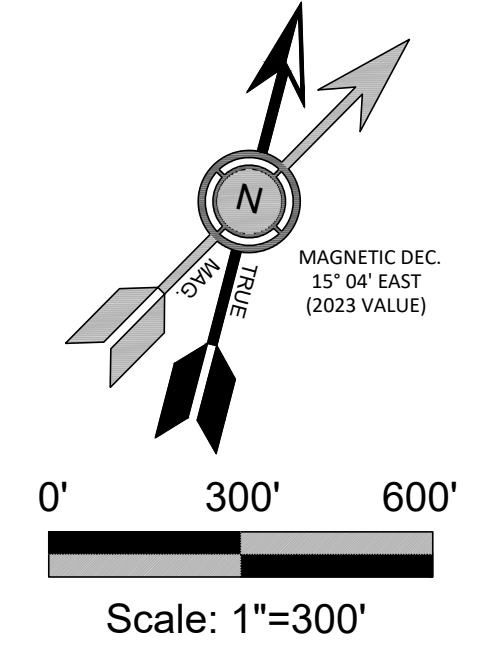


LEGEND		
	EXISTING	FUTURE / RESERVE
BUILDINGS - ON AIRPORT	[Orange Box]	[Blue Box]
BUILDINGS - OFF AIRPORT	[White Box]	N/A
RUNWAY/AIRFIELD PAVEMENT	[Grey Box]	[Green Box]
THROUGH THE FENCE (TTF) ACCESS POINT	[Diamond]	[Diamond]
THROUGH THE FENCE (TTF) HANGAR SITES	N/A	[Orange Box]
BUILDING RESTRICTION LINE (BRL)	[Dashed Blue Line]	[Dashed Orange Line]
AIRPORT PROPERTY LINE	[Dashed Blue Line]	[Dashed Blue Line]
RUNWAY SAFETY AREA (RSA)	[Dashed Blue Line]	[Dashed Blue Line]
OBJECT FREE AREA (OFA)	[Dashed Blue Line]	[Dashed Blue Line]
OBSTACLE FREE ZONE (OFZ)	[Dashed Blue Line]	[Dashed Blue Line]
APPROACH SURFACE	[Dashed Blue Line]	N/A
DEPARTURE SURFACE	[Dashed Blue Line]	N/A
RUNWAY PROTECTION ZONE (RPZ)	[Dashed Blue Line]	[Dashed Blue Line]
GROUND CONTOURS	[Dashed Blue Line]	N/A
AIRPORT REFERENCE POINT (ARP)	[Crosshair]	N/A
REIL	[Crosshair]	N/A
SEGMENTED CIRCLE / WIND INDICATOR	[Circle]	[Circle]
VISUAL GUIDANCE INDICATORS (PAPI)	[Dashed Blue Line]	[Dashed Blue Line]
FENCE	[Dashed Blue Line]	[Dashed Blue Line]
BEACON	[Star]	SAME
THRESHOLD LIGHTS	[Dashed Blue Line]	N/A
ROAD / VEHICLE PARKING	[Dashed Blue Line]	[Dashed Blue Line]
AIRCRAFT PARKING AREA / TIEDOWNS	[Dashed Blue Line]	[Dashed Blue Line]
RUNWAY LIGHTS	[Star]	SAME
TAXIWAY LIGHTS	[Star]	SAME
TAXIWAY MARKING	[Dashed Blue Line]	[Dashed Blue Line]
RUNWAY MARKING	[Dashed Blue Line]	[Dashed Blue Line]
TREE / PLANT / BUSH LINE	[Dashed Blue Line]	SAME
FUTURE AVIATION DEVELOPMENT AREA	N/A	[Blue Box]
AVIGATION EASEMENT	N/A	[Orange Box]
GROUND EASEMENT	N/A	[Orange Box]
DRAINAGE	[Blue Line]	SAME

THROUGH THE FENCE ACCESS DATA TABLE						
ACCESS POINT	GRANTOR	GRANTEE	INTEREST	AGREEMENT YEAR	EXPIRATION YEAR	PURPOSE
[Diamond]	LEWIS COUNTY	PETERSON ESTATES HOMEOWNERS' ASSOCIATION	ACCESS FEE	DEC. 2003	DEC. 2023	AIRPORT ACCESS

- NOTES:**
- THIS DRAWING REFLECTS PLANNING STANDARDS SPECIFIC TO THIS AIRPORT, AND IS NOT A PRODUCT OF DETAILED ENGINEERING DESIGN ANALYSIS. IT IS NO INTENDED TO BE USED FOR CONSTRUCTION OR NAVIGATION.
 - RESERVE RUNWAY DEVELOPMENT ARE DRAWN TO MEET RDC A/B-II STANDARDS.
 - ELEVATIONS (NAD83/NAVD 88) IN FEET ABOVE MEAN SEA LEVEL (MSL) AT TOP OF OBJECT. TRAVERSEWAY ELEVATIONS DO NOT INCLUDE TRAVERSE WAY ADJUSTMENT (17' FOR INTERSTATE HIGHWAYS AND 14' FOR OTHER PUBLIC ROADS).
 - PLEASE REFER TO AIRPORT AIRSPACE PLAN SHEET 3 FOR BUILDING TOP ELEVATIONS.
 - BUILDING RESTRICTION LINE (BRL) ON NORTH SIDE PERMITS 12-FOOT STRUCTURE; BRL ON SOUTH SIDE PERMITS 15-FOOT STRUCTURE. TALLER STRUCTURES TO BE LOCATED TO AVOID TRANSITIONAL SURFACE PENETRATIONS AND / OR REQUIRE ROOF-MOUNTED OBSTRUCTION LIGHTING.
 - FURTHER PLANNING ANALYSIS REQUIRED PRIOR TO UNDERTAKING DEVELOPMENT IN THE AREA RESERVED AS "FUTURE AVIATION DEVELOPMENT (R)."
 - THE DESIGN STANDARD RUNWAY WIDTH FOR RDC B-I IS 60', AND 75' FOR B-II. THE EXISTING WIDTH OF 150' EXCEEDS DESIGN STANDARDS. IN KEEPING WITH THE COUNTY'S BUSINESS PLAN, IT IS THE COUNTY'S INTENT TO MAINTAIN THE RUNWAY AT THE CURRENT WIDTH. THE COUNTY ACKNOWLEDGES THAT BY EXCEEDING THE STANDARD RUNWAY WIDTH, FAA PARTICIPATION WILL BE LIMITED TO THOSE AIP ELIGIBLE PORTIONS OF A RUNWAY PROJECT THAT ARE JUSTIFIED BY THE RDC IN EFFECT AT THE TIME A GRANT OFFER IS MADE.
 - TAXILANES ACCESSING EXISTING HANGARS WILL REMAIN TDG 1 AND SERVICE B-I, AND SMALLER AIRCRAFT.
 - RUNWAY EXTENSION RESERVE DEPICTED.
 - DATE OF AGIS OBSTRUCTION SURVEY; 10/13/2022.

BUILDING/FACILITY KEY					
NO.	DESCRIPTION	TOP ELEV.	NO.	DESCRIPTION	TOP ELEV.
1	T-HANGAR (7 UNITS)	365.58'	14	HANGAR	368.45'
2	HANGAR	370.20'	15	HANGAR	369.29'
3	HANGAR	370.78'	16	HANGAR	364.22'
4	HANGAR	370.47'	17	HANGAR	369.81'
5	HANGAR	369.23'	18	ELECTRICAL BUILDING	363.77'
6	HANGAR	366.71'	19	AIRPORT ADMIN.	370.70'
7	HANGAR	367.03'	20	FUTURE FBO	-
8	T-HANGAR (7 UNITS)	366.53'	21	FUTURE 2-UNIT HANGAR	-
9	T-HANGAR (7 UNITS)	365.14'	22	FUTURE (TFF) HANGAR SITES	-
10	HANGAR	366.77'	23	FUTURE HANGAR SITE	-
11	NOT USED	-	24	FUTURE HANGAR SITE	-
12	HANGAR	367.92'	25	FUTURE HANGAR SITE	-
13	HANGAR	367.87'			



"THE PREPARATION OF THIS DOCUMENT MAY HAVE BEEN SUPPORTED, IN PART, THROUGH THE AIRPORT IMPROVEMENT PROGRAM FINANCIAL ASSISTANCE FROM THE FEDERAL AVIATION ADMINISTRATION (PROJECT NUMBER VALUE) AS PROVIDED UNDER TITLE 49, UNITED STATES CODE, SECTION 47104. THE CONTENTS DO NOT NECESSARILY REFLECT THE OFFICIAL VIEWS OR POLICY OF THE FAA. ACCEPTANCE OF THIS REPORT BY THE FAA DOES NOT IN ANY WAY CONSTITUTE A COMMITMENT ON THE PART OF THE UNITED STATES TO PARTICIPATE IN ANY DEVELOPMENT DEPICTED THEREIN NOR DOES IT INDICATE THAT THE PROPOSED DEVELOPMENT IS ENVIRONMENTALLY ACCEPTABLE IN ACCORDANCE WITH APPROPRIATE PUBLIC LAWS."

NO.	DATE	BY	APPR	REVISIONS
<p>VERIFY SCALES BAR IS ONE INCH ON ORIGINAL DRAWING. 0" = 1" IF NOT ONE INCH ON THIS SHEET, ADJUST SCALES ACCORDINGLY.</p>				
<p>FEDERAL AVIATION ADMINISTRATION APPROVAL</p> <p>APPROVAL DATE: _____</p> <p>SIGNATURE _____</p>		<p>LEWIS COUNTY APPROVAL</p> <p>APPROVAL DATE: _____</p> <p>SIGNATURE _____</p>		<p>DESIGNED BY: DM</p> <p>DATE: DECEMBER 2023</p>
<p>CENTURY WEST ENGINEERING</p> <p>BEND OFFICE 1020 SW ENKAY DRIVE SUITE #100 BEND, OR 97702 541.322.8962 OFFICE</p>		<p>SOUTH LEWIS COUNTY AIRPORT</p> <p>AIRPORT LAYOUT PLAN</p>		<p>FIGURE NO.</p> <p>SHEET NO. 3 OF 12</p>