



Lewis County Department of Public Works

Josh S. Metcalf, PE, Director
Tim D. Fife, PE, County Engineer

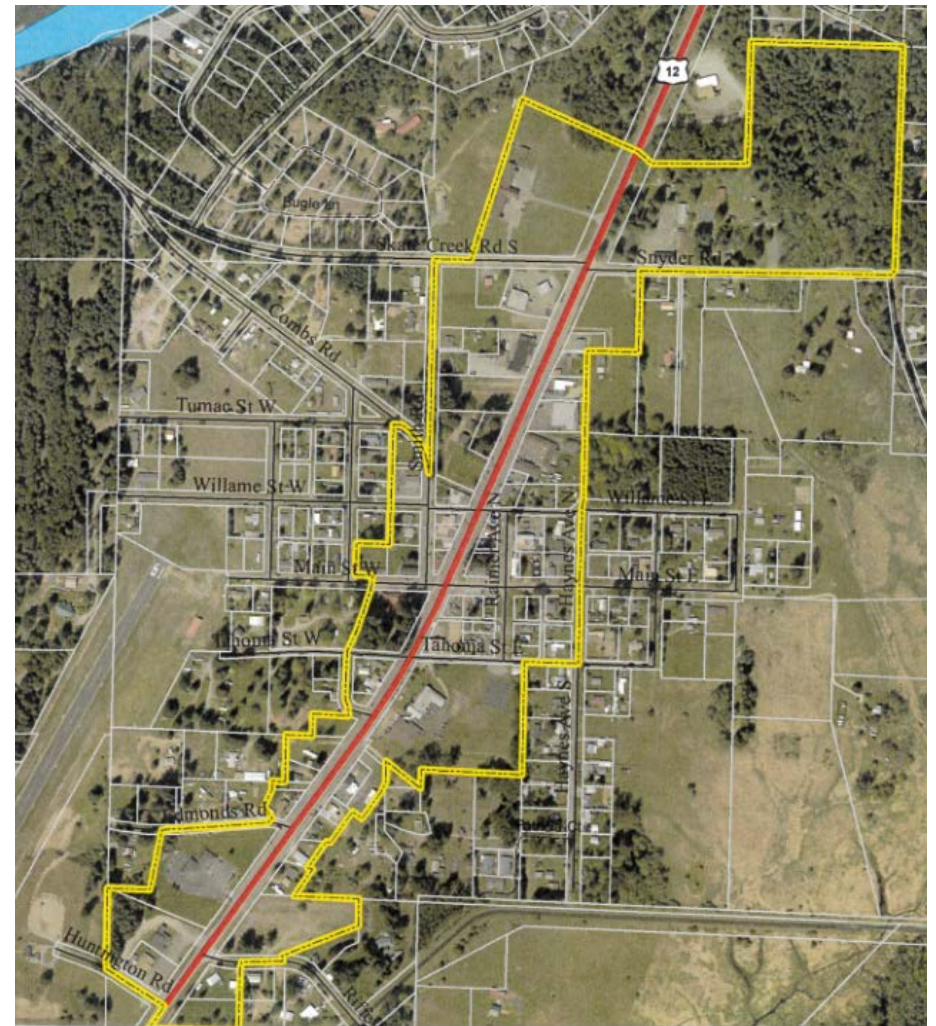
LEWIS COUNTY PACKWOOD SEWER SYSTEM PROJECT



OVERVIEW

Lewis County has obtained funds for the design and construction of a new Large On-Site Sewage System (LOSS) in the community of Packwood, Washington, in unincorporated eastern Lewis County.

The LOSS system will extend north along State Route (SR 12) from approximately the northern boundary of the old mill property to the SR 12 / Skate Cr.-Snyder Rd. intersection. The system will include the installation of 400 linear feet of sanitary sewer pipe on Tahoma St. E., 745 linear feet on Main St. W., 570 linear feet on Main St. E., and 440 linear feet along Willame St. E. This project will also include the possible installation of two (2) lift stations, and 4,465 linear feet of pipe from SR 12 to the sewage reactor and disposal facility.



The County has retained the services of consulting engineering firm, HDR Engineering, Inc., to assist with the project's design. Design elements associated with the project will consist of plan development, including identifying and addressing environmental and cultural resource impacts, implementing a vigorous community engagement process for obtaining vital feedback from the public as the project progresses, and finalizing plans, contract specifications, and engineer's estimate of probable construction costs to support the construction of the project.

SCHEDULE

A project of this magnitude will take between 18 and 20 months to complete all phases of the project, including design, plan sets, and contract documents to support the construction of the project. HDR Engineering, Inc. will commence with design of the project in March 2023 and provide final construction documents for contractor bid by the end of October 2024. Future construction of the project is anticipated to be an additional 24-month period following an award of the contract to the selected bidder.



WHAT YOU MAY SEE

The County's consultant, HDR Engineering, Inc., will be on-site within the next couple of weeks to collect data for use in assessing possible project needs and to support them in design and plan development of the project.

CAN THE PUBLIC PROVIDE INPUT?

Public participation is critical to the success of projects of this type and is strongly encouraged. A series of meetings are planned at key milestones during the design/development phase of the project to invite comments from the public. In addition to Public Engagement meetings the County will also post information about the project on the County's respective website for the community to access and comment on during various stages of design. The respective website can be accessed as follows:

[Current Projects \(lewiscountywa.gov\)](http://lewiscountywa.gov)

CONTACTS:

If you have questions or comments about the Packwood Sewer Project, please contact:

Mark Burch
Special Projects Manager
Lewis County Public Works
(360) 740 -2650

Mark.burch@lewiscountywa.gov

