

# Comprehensive Plan Periodic Update Open House

## Welcome



### What is this about?

Welcome to the Lewis County Comprehensive Plan Periodic Update Open House. At this open house, you will learn about Lewis County's plans for housing, transportation, economic development, land use and much more.

### Today's Agenda

This is a self-guided open house. Please review the boards at your own pace and ask a staff member if you have any questions.

**To provide comment on these proposed changes, grab a paper survey at the welcome table to participate. Turn in the paper survey to the welcome table before you leave. Or mail in the survey after, see the last page of the survey for the address.**

An online survey to participate in the open house virtually is available at [lewiscountywa.gov](http://lewiscountywa.gov) or use the QR code. The survey will be available online until October 31st, at 5:00PM.

### Why do I need to know this?

The comprehensive plan guides and manages growth and development in Lewis County over the next 20 years. It's important that the community's priorities are included in the plan's vision, goals and policies.

### Take the Survey!

Please grab a paper survey from the welcome table and answer the questions as you review the boards.



### Online Survey

For those who cannot attend or would like to provide further comments an online survey is available on the project website.



### Looking for more information?

Check out the project website using the QR Code.

### Staff Contact

Email Mindy Brooks [mindy.brooks@lewiscountywa.gov](mailto:mindy.brooks@lewiscountywa.gov)



QR code to project website.





## What is covered in these elements?

### Land Use Element

#### Urban Growth Areas

Where most growth and development is anticipated and should occur at higher density than in rural areas.

#### Rural Areas

Where some low density growth and development is expected, but the focus is on maintaining large lots, resource lands and critical areas.

#### Natural Environment

Preserve critical areas, water quality, shorelines, floodplains, air quality and open spaces.

#### Natural Resource Lands

Protected and support agricultural, forestry and mining in rural areas.

#### Transportation Element

Ensure that the county transportation systems support growth and development and integrates with city, state and federal transportation.

#### Housing Element

Provide more housing options that are affordable to people at all income levels and help people to remain in their housing.

#### Capital Facilities & Utilities Element

Provide sufficient county facilities and services, such as water, utilities and EMS, to support anticipate growth and development.

#### Economic Development Element

Grow Lewis County economy through agricultural, forestry, tourism and recreation, industry and workforce education.

#### New! Climate Element

Reduce the communities vulnerability to natural hazards including flooding, wildfire and extreme heat.

#### New! Resiliency Sub-Element

Ensure long term community health and well-being focusing on resilient infrastructure, building design and supply chains.

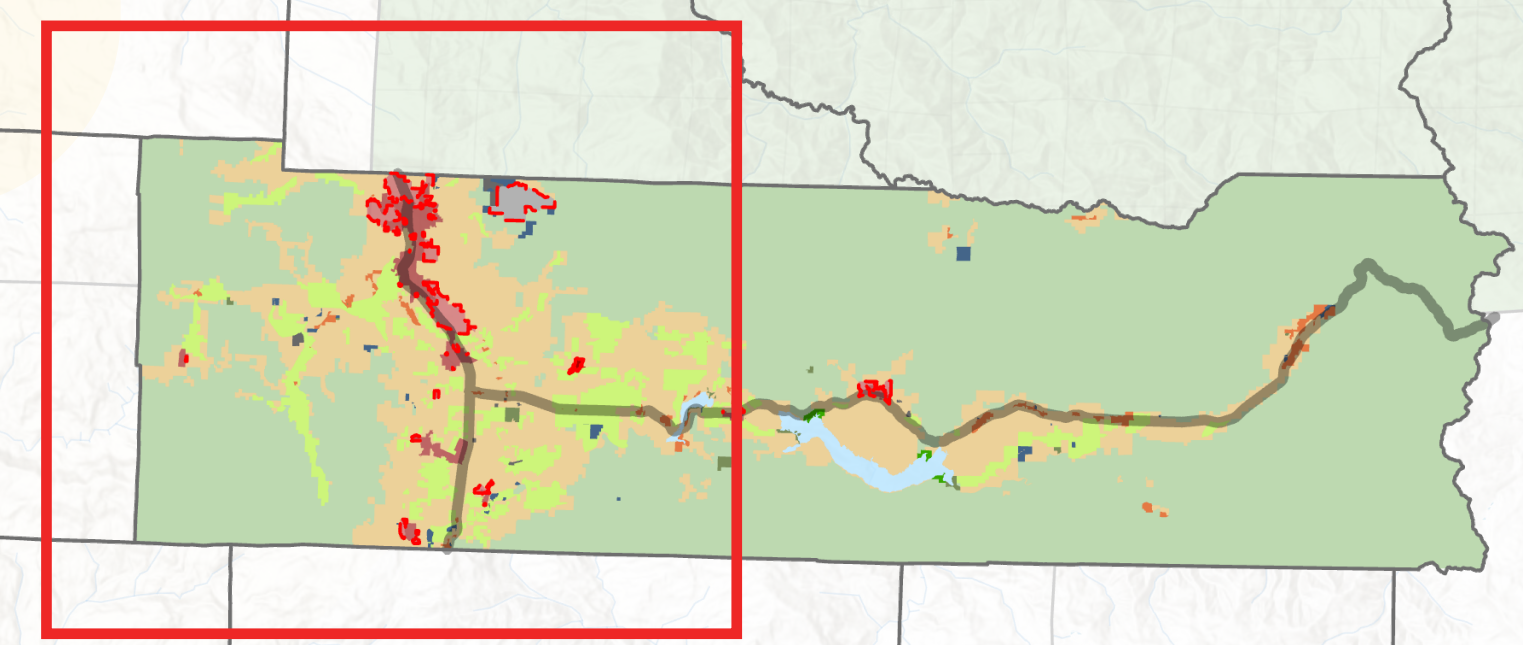
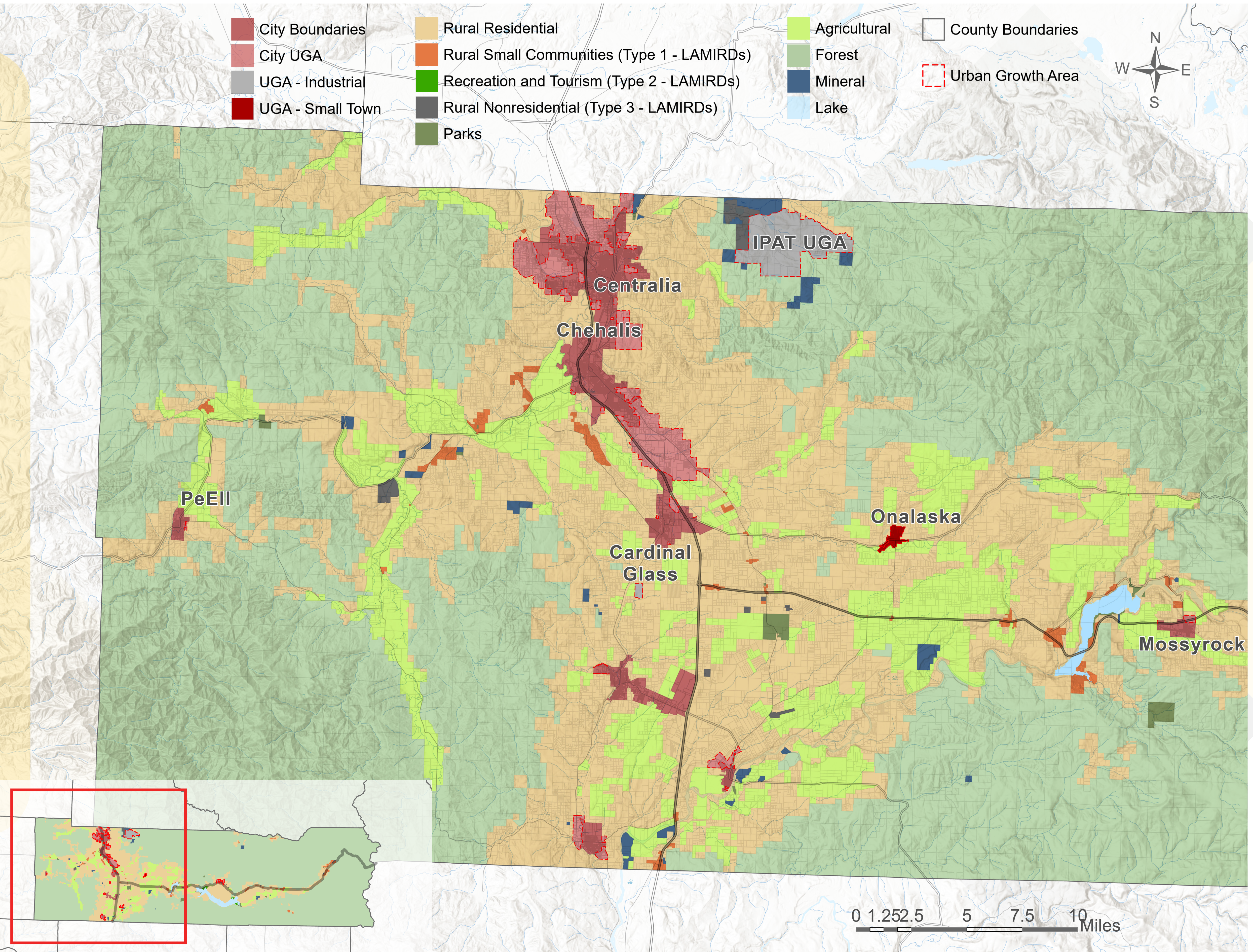
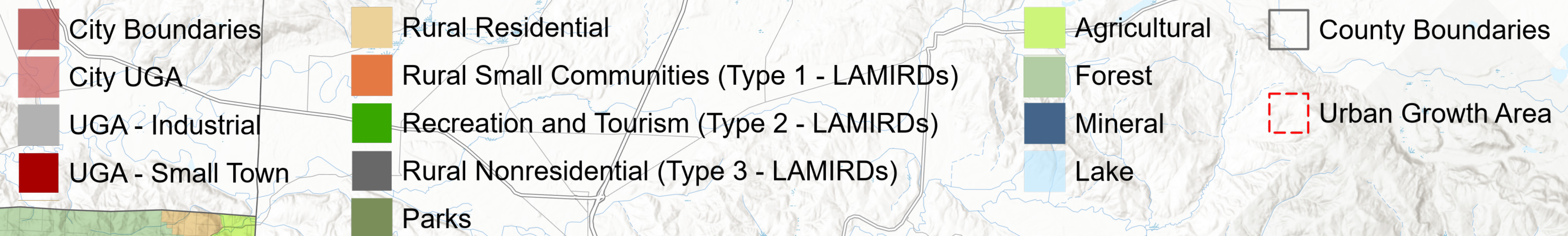
# Comprehensive Plan Periodic Update Open House

## Land Use Designations



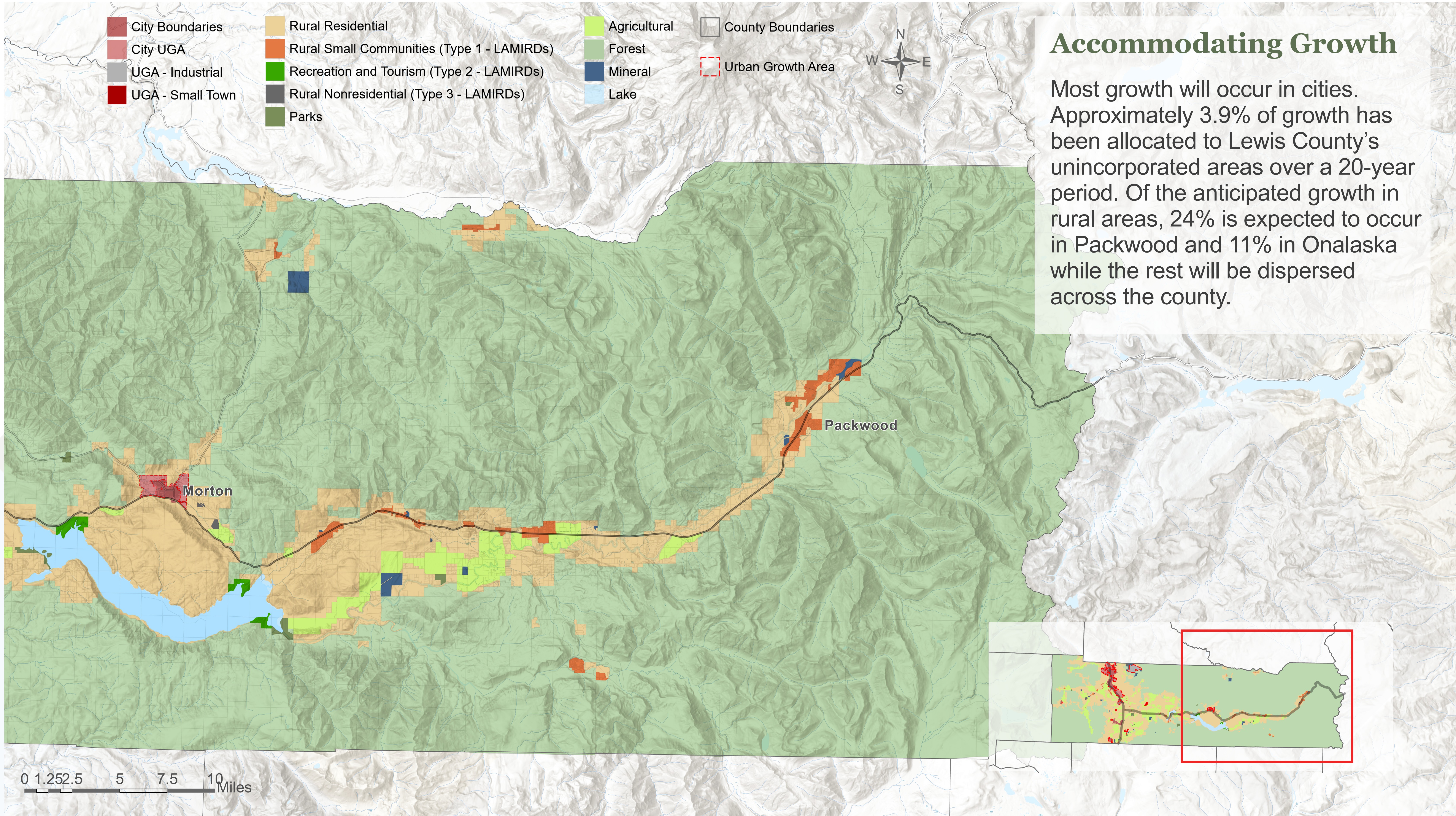
### What's New?

- Onalaska UGA - Small Town, in bright red, and Packwood LAMIRD, updated to provide more housing options, employment, facilities and multi-modal transportation.
- Rural small communities, in dark orange, (previously small community, commercial crossroads, residential settlement) has been updated to provide more housing options as allowed by state law.
- IPAT UGA, in gray, and recreation and tourism, in green, will be bolstered to bring in new businesses and job opportunities.



# Comprehensive Plan Periodic Update Open House

## Land Use Designations



### Accommodating Growth

Most growth will occur in cities. Approximately 3.9% of growth has been allocated to Lewis County's unincorporated areas over a 20-year period. Of the anticipated growth in rural areas, 24% is expected to occur in Packwood and 11% in Onalaska while the rest will be dispersed across the county.



### Urban Growth Areas

These areas focus on providing urban densities or housing, employment, services, and facilities. Land uses and development patterns in urban growth areas around cities are established in coordination with the cities.

Promote economic development and employment opportunities.

Promote multi-modal transportation.

Expand housing options, especially housing options for lower income households and those with special housing needs.

Expand parks, green infrastructure, and green space networks.

Create policies to protect communities from natural hazards.

### Rural Areas

These areas are established for agricultural and rural uses and housing at rural densities. Rural character is established and maintained to prevent urban and sprawl. Rural areas provide *some* commercial and employment options while maintaining rural character.

Preserve (no change to) existing rural character, uses, and densities.

Where possible, expand housing options especially for lower income households and those with special housing needs.

Create policies to protect rural communities from natural hazards.

### Resource Lands

These areas are designated for forestry, agriculture, and mining. Use of this land for these purposes is protected and support through local policies.

Preserve (no change to) existing goals and policies for natural resource lands.

Support and grow local farming opportunities.

### Natural Environment

Throughout all of Lewis County, regardless of land use designation, environmental policies are established and maintained to promote water quality, air quality, preservation of critical areas, stormwater, and open space preservation.

Update policies to address best available science.

Update policies to address natural hazards and especially those worsened by climate change.

**What's New?**

**Complete the survey and let us know if you agree with these proposed changes.**

# Comprehensive Plan Periodic Update Open House

## Housing



### Overview

Updated state laws require Lewis County to revise the Housing Element and include the following:

- Plan for and accommodate housing for moderate, low, very-low, and extremely-low incomes households.
- Include moderate density housing options.
- Plan for emergency housing and permanent supportive housing.

### Existing Policies Focus On: Housing Types & Preservation, Housing Affordability, Housing Development

- Allow rural and urban densities, manufactured housing, accessory dwelling units.
- Provide housing for low-income families.
- Allow future housing development opportunities compatible with agricultural uses and adjacent natural resource lands.
- Preserve existing housing stock.
- Coordinate to establish affordable housing programs.

### What's New?

#### Housing Types

Provide housing types in Lewis County for all incomes.  
 Increase middle housing, manufacture housing, and ADUs.  
 Establish emergency shelters.

#### Housing Affordability

Study and regulate short-term rental use in Lewis County to reduce the loss of long-term housing.

#### Housing Equity (New)

Provide opportunities for special housing types like group homes, and other housing conditions for specific users.  
 Understand and mitigate health impacts in housing.  
 Protect housing populations vulnerable to natural hazards and displacement.

#### Housing Preservation

Provide resources and services to rural residents to preserve housing stock.

#### Housing Development

Improve permit processes and establish clear regulations for housing development.

**Complete the survey and let us know if you agree with these proposed changes.**



# Transportation

## Overview

Updates to state law requires the following changes:

- Maintain existing transportation infrastructure.
- Enhance safety and transportation options equitably and for vulnerable users.
- Promote multi-modal transportation networks (transit, walking, biking, wheelchair, mobility).

## Existing Policies Focus On: Maintenance, Safety, Construction, and Coordination, for Roads, Transit, Walking, Biking, Rail, Air transport

- Maintain safe and free-flowing transportation networks.
- Coordinate with all agencies for construction and maintenance.
- Seek funding for future projects.
- Provide air service at County airports with compatible adjacent uses.
- Maintain military training routes.
- Preserve existing rail corridors.
- Provide alternative transportation routes.
- Provide walking routes, biking routes, and transit.
- Ensure demand management and adequate levels of service.

What's New?

### Resilient Transportation


Prioritize improvements to transportation networks vulnerable to natural hazards and disasters.

Provide transportation services equitably across the County, including rural areas.

### Multi-Modal Transportation Network

In small towns and LAMIRDs, increase opportunities for transportation for low-income, disabled, or other disadvantaged populations.

In small towns and LAMIRDs, combine walking, biking, transit, roads and ADA facilities and create a multi-modal transportation network.



Include cars, buses, bikes, pedestrian, micromobility (scooters), wheelchair in transportation networks.

Complete the survey and let us know if you agree with these proposed changes.

# Comprehensive Plan Periodic Update Open House

## Infrastructure and Services



### Overview

Minimal changes to state law impacted the capital facilities and utilities elements in the Comprehensive Plan. Generally, policies have been revised to better coordinate with utility providers.

### Existing Policies Focus On: Construction, Planning, and Coordination for Buildings, Parks, Schools, Water, Wastewater, Stormwater, & Utilities

- Seek sustainable and economic opportunities for funding projects.
- Provide services concurrent with development.
- Maintain established levels of service for facilities and services.
- Ensure adequate water supplies and infrastructure are provided.
- Reduce stormwater impacts on local rivers, streams, and wetlands.
- Provide high quality parks.
- Support improvement of schools.
- Provide solid waste service services.
- Coordinate with utility providers for gas, electric, telecommunications.

### What's New?

#### Energy and Sustainability

- Explore electric vehicle opportunities.
- Establish new options for energy efficient buildings.
- Explore opportunities for renewable energy for facilities and services.
- Explore opportunities for efficient use of materials, like surplus programs, equipment rental programs.

#### County Buildings

Protect facilities and services from natural hazards.

#### Parks

Expand park networks, explore options for connections between communities.

#### Broadband and Fiber Optics

Coordinate for new projects and improvements to broadband and other telecommunications.

**Complete the survey and let us know if you agree with these proposed changes.**





# Comprehensive Plan Periodic Update Open House

## Economic Development



### Overview

Lewis County intends to continue economic development initiatives through land use integration. Most of the economic development goals and policies have been revised for feasibility and will be integrated throughout the comprehensive plan elements.

### Existing Policies Focus On: Wage, Key Industries, Tourism, Infrastructure, Entrepreneurship, Business Retention, Workforce Development, & Government

- Increase wage levels.
- Promote diverse job opportunities.
- Target natural resource industries.
- Promote agricultural industries activities.
- Encourage energy related industries.
- Develop recreation and tourism opportunities.
- Provide infrastructure for economic development expansion.
- Promote entrepreneurship in Lewis County.
- Promote the retention and expansion of existing businesses.
- Provide workforce training opportunities.

### What's New?

#### New Industries

Support transition of IPAT/ TransAlta from mining to other industrial uses and explore options for new industrial areas near major transportation corridors.

#### Economic Development Integration

Economic development policies will be better integrated into the land use, transportation, and climate and resiliency elements to promote economic growth and economic resilience.

#### Resilient Economies

Protect industries vulnerable to natural hazards.  
Protect critical networks that provide goods and services to the community, like airports and rail.  
Expand telecommunications.

**Complete the survey and let us know if you agree with these proposed changes.**



# Comprehensive Plan Periodic Update Open House

## Climate and Resilience (New Element!)



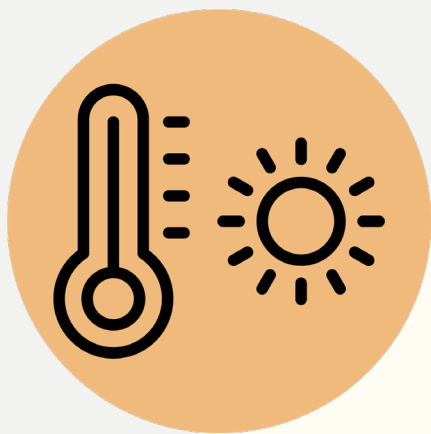
### Overview

Per new state requirements the Climate and Resiliency element must establish goals and policies to:

- Reduce greenhouse gas emissions generated by transportation and land use (see other elements).
- Enhance resiliency to and adverse impacts of climate change.
- Reduce vehicle miles traveled (see transportation element).
- Address natural hazards aggravated by climate change.



Flooding



Reduced Snowpack / Rising Temps.



Extreme Precipitation



Avalanche



Wildfire & Smoke

### Flood Resilience & Critical Areas

Protect ecosystems susceptible to natural hazards.

### Emergency Preparedness

Expand emergency response, notification alerts, post disaster response, public facilities and sheltering, communication system upgrades.

### Evacuation Systems

Expand evacuation routes. Protect critical evacuation routes from natural hazards. Expand education on evacuation routes and practices.

### Wildfire Resilience

Ensure wildfire planning is continued. Provide education on wildfire preparedness and property maintenance. Enhance protection of areas vulnerable to wildfires.

### Historic and Cultural Resources

Protect historic areas from natural hazards.

### Sustainable Design

Enhance buildings to increase resilience to flooding, fire, extreme heat, and utility loss. Examples: fire resilience standards, utility improvements, power loss management.

### Public Health and Wellbeing

Educate community members on natural hazards awareness, preparedness and mitigation. Expand services to communities for hazard mitigation and disaster relief.

### Resilient Economies

Protect industries vulnerable to natural hazards. Protect critical networks that provide goods and services to the community, like airports and rail. Expand telecommunications.

**Complete the survey and let us know if you agree with these proposed changes.**