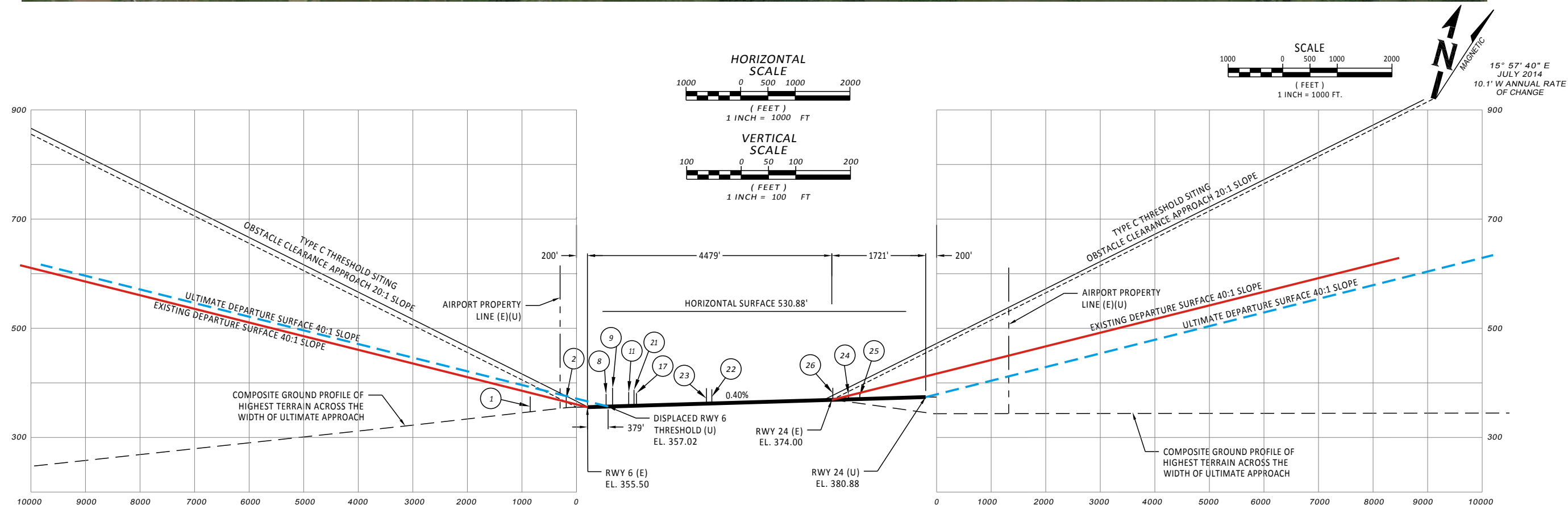
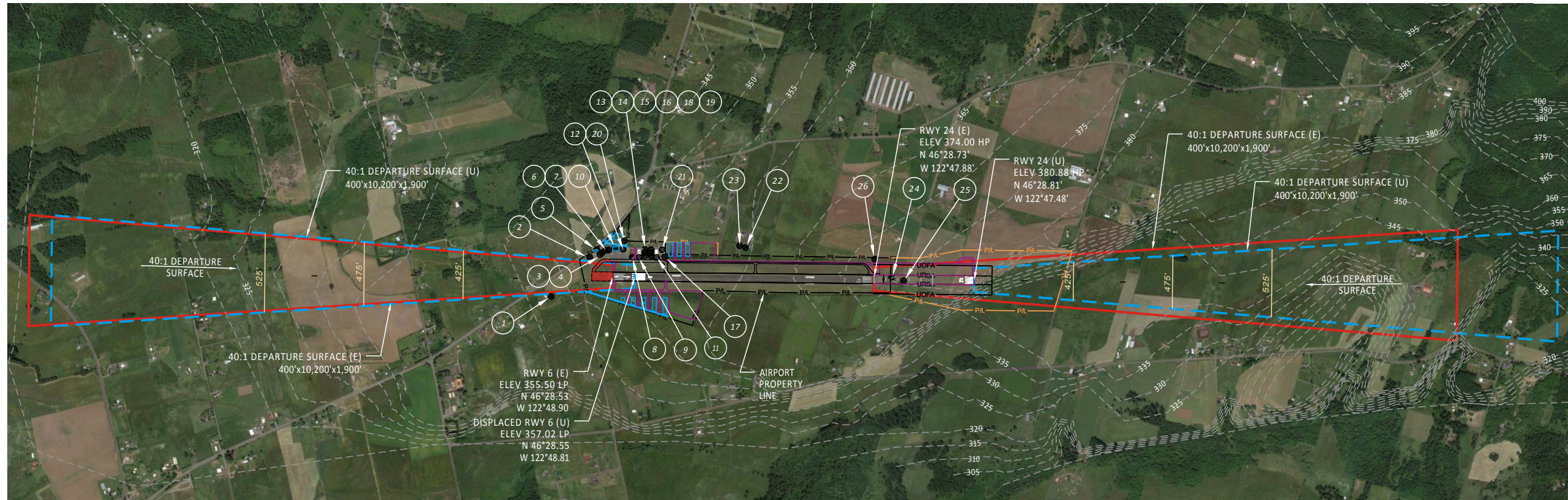


[DATE: 7/24/2014 10:00 AM] [AUTHOR: rtemplado] [PLOTTER: None] [STYLE: WHP-Standard.ctb]
 [PATH: P:\Lewis County\037379\Design\Drawings\Civil\037379-C-DP01.dwg] [LAYOUT: 8]



- LEGEND:**
- OBSTRUCTIONS PART 77
 - 525' CONTOUR LINES
 - PAVEMENT REMOVAL
 - P/L — EXISTING AIRPORT PROPERTY LINE
 - P/L — PROPOSED AIRPORT PROPERTY LINE

- NOTES:**
1. FOR OBSTRUCTIONS DATA TABLE REFER TO AIRSPACE PLAN (SHEET 3).
 2. THERE ARE NO GROUND PENETRATIONS TO THE FAR PART 77 IMAGINARY SURFACES.

"THE PREPARATION OF THESE DOCUMENTS MAY HAVE BEEN SUPPORTED, IN PART THROUGH THE AIRPORT IMPROVEMENT PROGRAM FINANCIAL ASSISTANCE FROM THE FEDERAL AVIATION ADMINISTRATION (PROJECT NUMBER 3-53-0078-007) AS PROVIDED UNDER TITLE 49, UNITED STATES CODE, SECTION 47104. THE CONTENTS DO NOT NECESSARILY REFLECT THE OFFICIAL VIEWS OR POLICY OF THE FAA. ACCEPTANCE OF THESE DOCUMENTS BY THE FAA DOES NOT IN ANY WAY CONSTITUTE A COMMITMENT ON THE PART OF THE UNITED STATES TO PARTICIPATE IN ANY DEVELOPMENT DEPICTED HEREIN NOR DOES IT INDICATE THAT THE PROPOSED DEVELOPMENT IS ENVIRONMENTALLY ACCEPTABLE IN ACCORDANCE WITH APPROPRIATE PUBLIC LAWS."

REVISIONS	NO.	BY	DATE	REMARKS

SHEET INFO	DESIGNED	GE	DRAWN	RT	CHECKED	WR	APPROVED	REA	LAST EDIT	11/16/2014	PLOT DATE	7/24/2014	SUBMITTAL

RWY 6 AND RWY 24 DEPARTURE SURFACE PLAN & PROFILE
 LEWIS COUNTY
 ED CARLSON MEMORIAL FIELD
 PROJECT NUMBER 037379
 DRAWING FILE NAME 037379-C-DP01
 SCALE AS NOTED