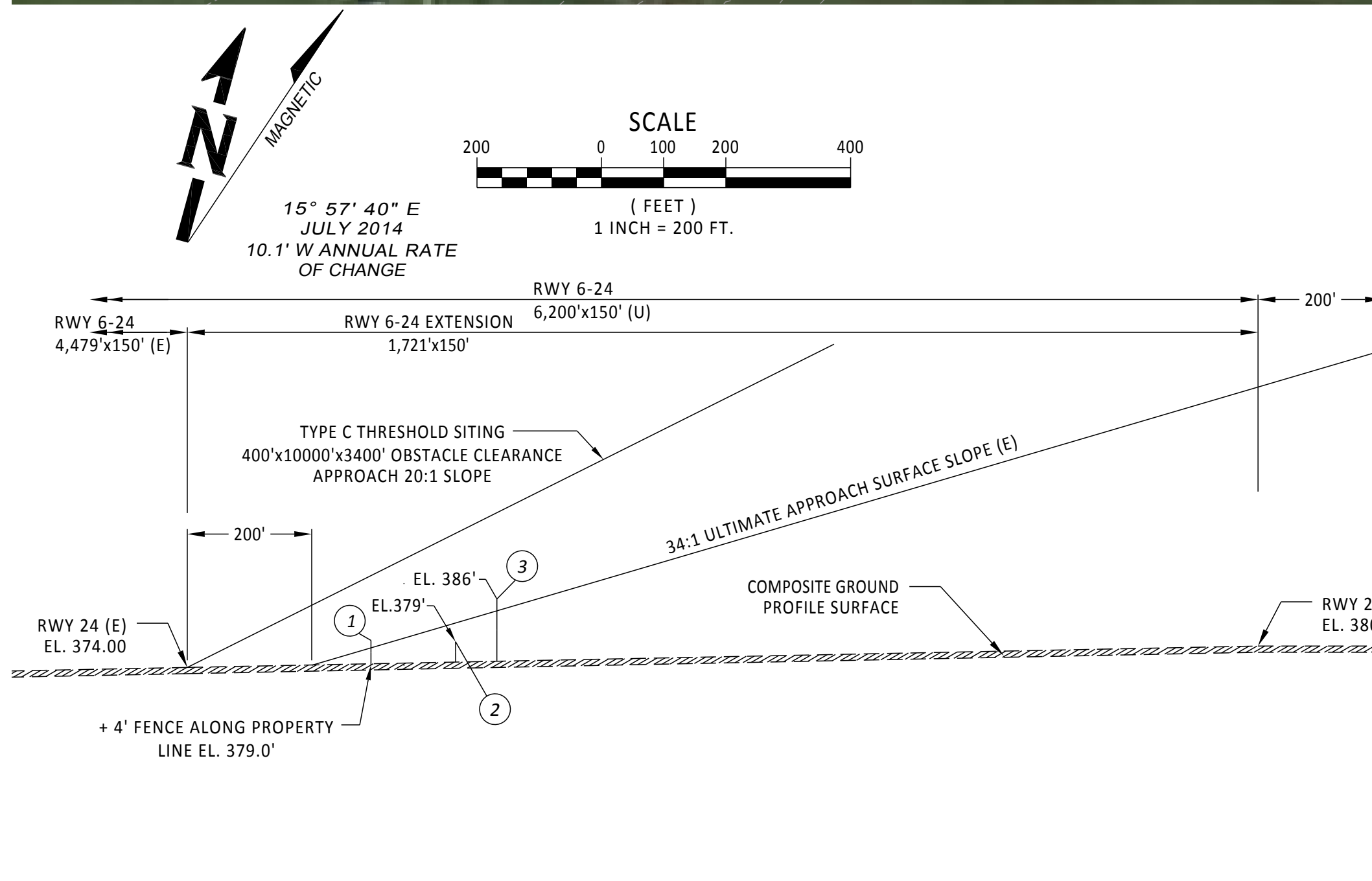


[DATE: ----] [AUTHOR: rtemplado] [PLOTTER: None] [STYLE: Full Size.ctb] [LAYOUT: 5]
 [PATH: P:\Lewis County\037379\Design\Drawings\Civil\037379-C-AP02.dwg]



NOTES:

1. ELEVATIONS SHOWN INCLUDE TRAVERSE WAY ADJUSTMENT (17' FOR INTERSTATE HIGHWAY, 15' FOR OTHER PUBLIC ROADS AND 10' FOR OTHER PRIVATE ROADS).
2. NO OBSTRUCTIONS IDENTIFIED IN THE APPROACH SURFACE BASED ON THE ORS DATABASE AS OF MARCH 2014.

LEGEND

	RECOMMENDED PROPERTY ACQUISITION
	EXISTING STRUCTURE
	ULTIMATE STRUCTURE
	ULTIMATE PAVEMENT
	PAVEMENT REMOVAL

"THE PREPARATION OF THESE DOCUMENTS MAY HAVE BEEN SUPPORTED, IN PART THROUGH THE AIRPORT IMPROVEMENT PROGRAM FINANCIAL ASSISTANCE FROM THE FEDERAL AVIATION ADMINISTRATION (PROJECT NUMBER 3-53-0078-007) AS PROVIDED UNDER TITLE 49, UNITED STATES CODE, SECTION 47104. THE CONTENTS DO NOT NECESSARILY REFLECT THE OFFICIAL VIEWS OR POLICY OF THE FAA. ACCEPTANCE OF THESE DOCUMENTS BY THE FAA DOES NOT IN ANY WAY CONSTITUTE A COMMITMENT ON THE PART OF THE UNITED STATES TO PARTICIPATE IN ANY DEVELOPMENT DEPICTED HEREIN NOR DOES IT INDICATE THAT THE PROPOSED DEVELOPMENT IS ENVIRONMENTALLY ACCEPTABLE IN ACCORDANCE WITH APPROPRIATE PUBLIC LAWS."

REVISIONS	NO.	BY	DATE	REMARKS

SHEET INFO		DESIGNED		GE	
DRAWN	RT	CHECKED	WR	APPROVED	REA
LAST EDIT	11/19/2014	PLOT DATE	12/19/2007		
SUBMITTAL					

RWY 24 INNER APPROACH PLAN & PROFILE
 LEWIS COUNTY
 ED CARLSON MEMORIAL FIELD
 PROJECT NUMBER 037379-C-AP02
 DRAWING FILE NAME 037379
 SCALE AS NOTED