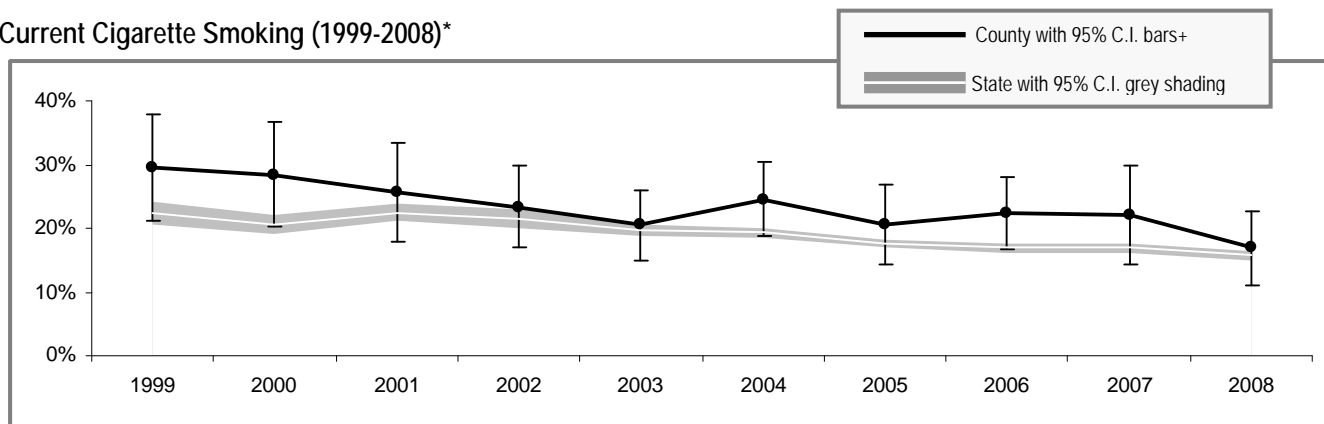


Lewis County

Lewis County

Adult Tobacco Use

Current Cigarette Smoking (1999-2008)*



* Smoking prevalence trend is based on English language surveys only. (Spanish language surveys began in 2003.)
 + County prevalence is a 3-year rolling average through 2002; starting in 2003 smoking prevalence is based on single-year data.

Current Smoking (2008)**

	All adults
Lewis County	16.3% (± 5.6%)
Washington State	15.3% (± 0.8%)

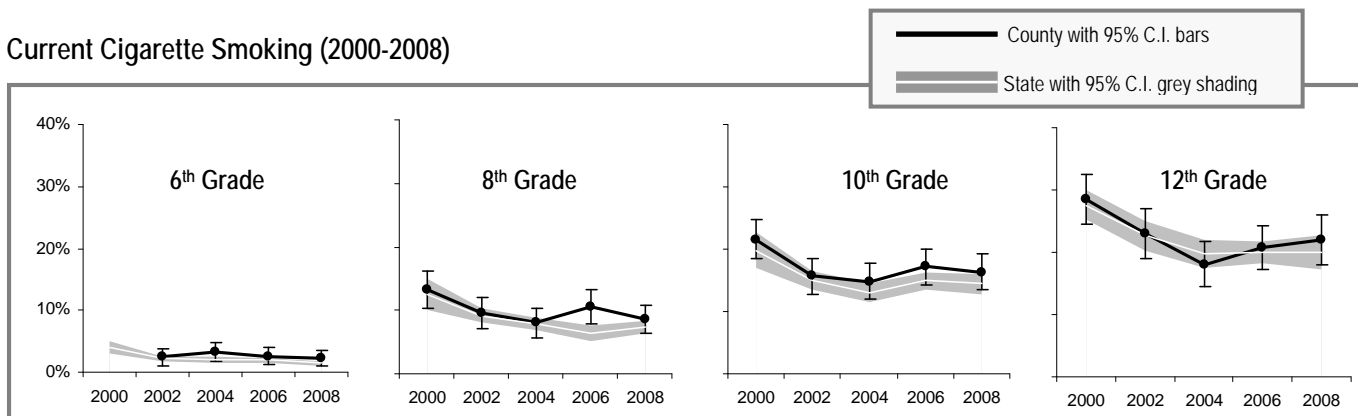
Current Smokeless Tobacco Use (2006-2008)**

	All adults	Males only
Lewis County	4.5% (± 2.4%)	9.3% (± 5.1%)
Washington State	3.1% (± 0.4%)	6.0% (± 0.7%)

** Current smoking and smokeless prevalence include both English and Spanish language surveys.

Youth Tobacco Use

Current Cigarette Smoking (2000-2008)



Current Smoking (2008)

	All 10 th Graders
Lewis County	16.3% (± 2.9%)
Washington State	14.4% (± 1.6%)

Current Smokeless Tobacco Use (2008)

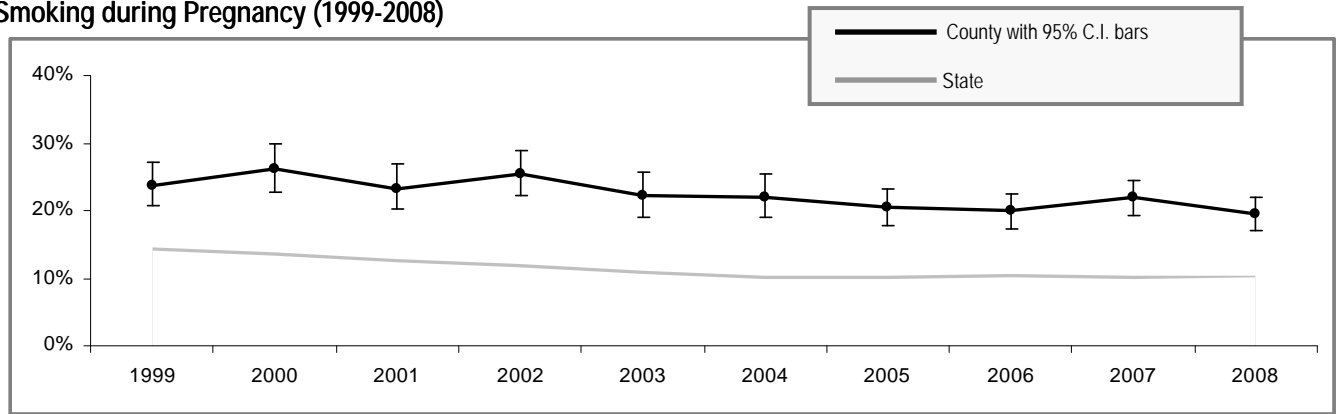
	All 10 th Graders	10 th Grade Males only
Lewis County	10.0% (± 2.4%)	15.9% (± 4.1%)
Washington State	6.7% (± 1.3%)	10.5% (± 2.3%)

DATA SOURCES: ADULT TOBACCO USE – WA. DEPT OF HEALTH, BEHAVIORAL RISK FACTOR SURVEILLANCE SYSTEM (BRFSS); YOUTH TOBACCO USE – WA STATE HEALTHY YOUTH SURVEY (HYS); POPULATION ESTIMATES – OFFICE OF FINANCIAL MGMT(OFM), YEAR 2008 POPULATION ESTIMATES; MATERNAL SMOKING DURING PREGNANCY – WA BIRTH CERT SYSTEM; TOBACCO-RELATED CANCER – WA STATE CANCER REGISTRY; ESTIMATED TOTAL DEATHS – WA DEATH CERT SYSTEM.



Tobacco Use by Pregnant Women

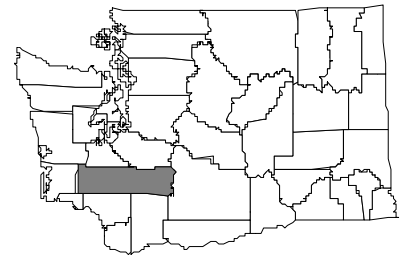
Smoking during Pregnancy (1999-2008)



People Affected in Lewis County

2008 population: 74,700

- 11,100 adults smoke
- 2,500 adults use smokeless tobacco
- 190 infants are born annually to mothers who smoke during pregnancy
- 1,100 youth smoke
- 700 youth use smokeless tobacco
- 8,100 adults are exposed to secondhand smoke
- 5,900 youth are exposed to secondhand smoke
- 70 cancers diagnosed each year are smoking-related
- 110 adults die annually from smoking-related causes



Community Indicators for Lewis County

- Providence Centralia Hospital has adopted a policy restricting tobacco use on its campus.
- 82% of households have a ban on smoking (95% C.I. \pm 4%)
- 0% of retailers have sold tobacco products to minors
- 14% of 10th graders say tobacco is "very hard to get" (95% C.I. \pm 4%)
- The state's Tobacco Quit Line received 541 calls from Lewis County in 2009, totaling about 2,400 calls since its inception in 2000.
- 63% of smokers tried to quit in the past year (95% C.I. \pm 9%)
- 57% of tobacco users received advice to quit or assistance in quitting from a healthcare professional (among those who had a healthcare visit in the past year) (95% C.I. \pm 14%)
- 28% of tobacco users did not have a healthcare visit in the past year (95% C.I. \pm 11%)
- 16% of smokers who have health insurance say that their insurance covers help in quitting smoking, such as counseling or nicotine patches (95% C.I. \pm 8%)
- 47% of smokers with health insurance do not know if it covers help in quitting smoking (95% C.I. \pm 14%)
- Tobacco use costs Lewis County \$21.3 million in healthcare and lost wages every year.

Priorities for Tobacco Prevention and Control

- Preventing Youth from Initiating Tobacco Use
- Increasing Tobacco Cessation
- Eliminating Exposure to Secondhand Smoke
- Identifying and Eliminating Tobacco-Related Disparities in High Risk Groups

Local Contact Information:

Sonia Ferguson
 phone: 360-740-1489
 fax: 360-740-2698
 email: SA Ferguson@co.lewis.wa.us

Lewis County Social Services
 17 NW Cascade Avenue
 Chehalis 98532
 website: <http://lewiscountywa.gov/publichealth>