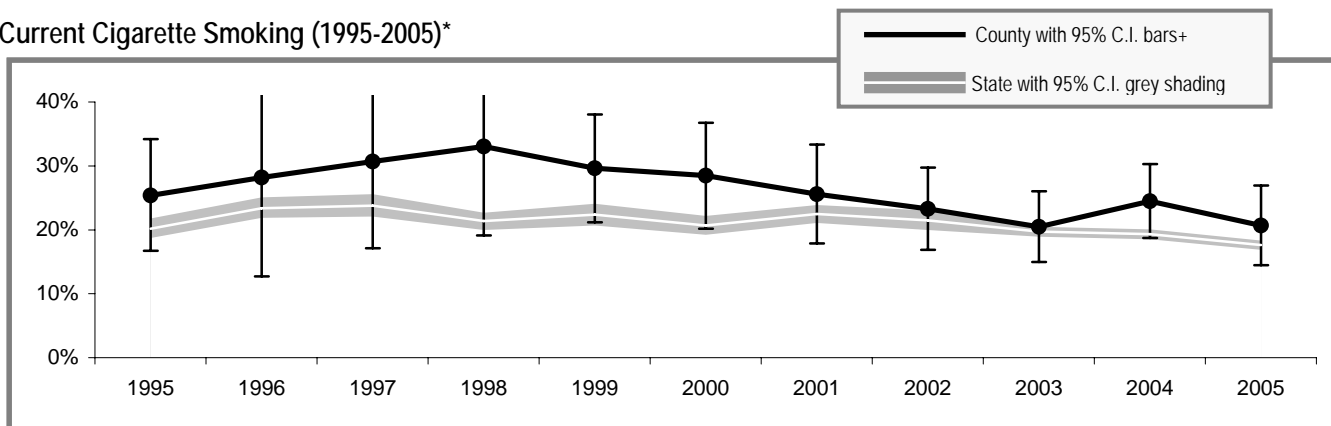


Lewis County

Lewis County

Adult Tobacco Use

Current Cigarette Smoking (1995-2005)\*



\* Smoking prevalence trend is based on English language surveys only. (Spanish language surveys began in 2003.)  
 + County prevalence is a 3-year rolling average through 2002; starting in 2003 smoking prevalence is based on single-year data.

Current Smoking (2005)\*\*

	All adults
Lewis County	19.8% (± 6.0%)
Washington State	17.5% (± 0.7%)

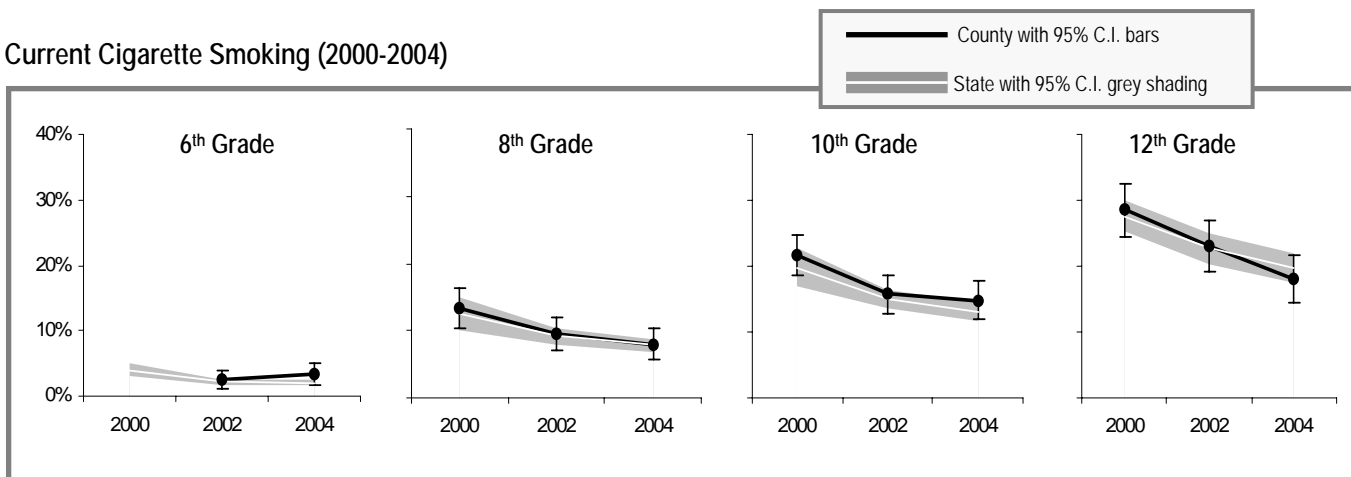
Current Smokeless Tobacco Use (2003-2005)\*\*

	All adults	Males only
Lewis County	4.4% (± 2.0%)	9.8% (± 4.4%)
Washington State	3.0% (± 0.3%)	5.8% (± 0.6%)

\*\* Current smoking and smokeless prevalence include both English and Spanish language surveys.

Youth Tobacco Use

Current Cigarette Smoking (2000-2004)



Current Smoking (2004)

	All 10 <sup>th</sup> Graders
Lewis County	14.8% (± 2.9%)
Region**	15.8% (± 1.2%)
Washington State	13.0% (± 1.4%)

Current Smokeless Tobacco Use (2004)

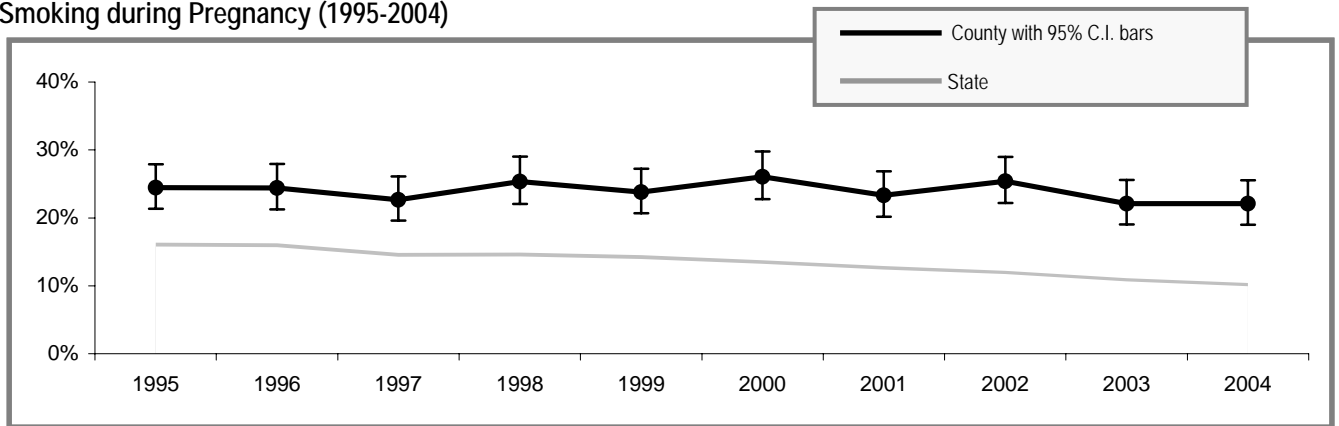
	All 10 <sup>th</sup> Graders	10 <sup>th</sup> Grade Males only
Lewis County	5.9% (± 2.0%)	9.9% (± 3.5%)
Region**	5.1% (± 0.4%)	9.8% (± 1.4%)
Washington State	4.9% (± 0.6%)	8.0% (± 1.2%)

\*\* Region includes school districts in Grays Harbor, Lewis, Mason, Pacific, and Thurston counties.

DATA SOURCES: ADULT TOBACCO USE – WA. DEPT OF HEALTH, BEHAVIORAL RISK FACTOR SURVEILLANCE SYSTEM (BRFSS); YOUTH TOBACCO USE – WA STATE HEALTHY YOUTH SURVEY (HYS); POPULATION ESTIMATES – OFFICE OF FINANCIAL MGMT(OFM), YEAR 2000 CENSUS; MATERNAL SMOKING DURING PREGNANCY – WA BIRTH CERT SYSTEM; TOBACCO-RELATED CANCER – WA STATE CANCER REGISTRY; ESTIMATED TOTAL DEATHS – WA DEATH CERT SYSTEM.

## Tobacco Use by Pregnant Women

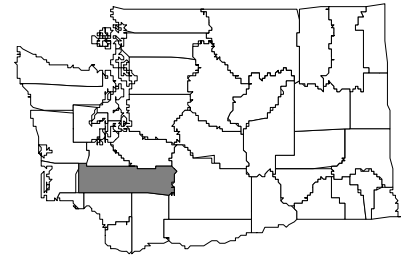
### Smoking during Pregnancy (1995-2004)



### People Affected in Lewis County

2000 population: 68,600

- 10,000 adults smoke
- 2,200 adults use smokeless tobacco
- 200 infants are born annually to mothers who smoke during pregnancy
- 800 youth smoke
- 400 youth use smokeless tobacco
- 12,200 adults are exposed to secondhand smoke
- 3,000 youth are exposed to secondhand smoke
- 70 cancers diagnosed each year are smoking-related
- 100 adults die annually from smoking-related causes



### Community Indicators for Lewis County

- All restaurants and bars are now completely smokefree
- 80% of households have a ban on smoking (95% C.I.  $\pm$  4%)
- 0% of retailers sold tobacco products to minors
- 35% of 10<sup>th</sup> graders say tobacco is "hard to get" (95% C.I.  $\pm$  6%)
- 19 tobacco industry sampling event occurred in the past year – 102 samples were distributed
- 258 people called the Quitline in the past year
- 48% of smokers tried to quit in the past year (95% C.I.  $\pm$  9%)
- 64% of tobacco users who had a healthcare visit in the past year were advised to quit by a healthcare professional (95% C.I.  $\pm$  8%)
- 24% of tobacco users did not have a healthcare visit in the past year (95% C.I.  $\pm$  6%)
- 25% of smokers who have health insurance say that their insurance covers help in quitting smoking, such as counseling or nicotine patches (95% C.I.  $\pm$  9%)
- 42% of smokers with health insurance do not know if it covers help in quitting smoking (95% C.I.  $\pm$  11%)

### Priorities for Tobacco Prevention and Control

- Preventing Youth from Initiating Tobacco Use
- Increasing Tobacco Cessation
- Eliminating Exposure to Secondhand Smoke
- Identifying and Eliminating Tobacco-Related Disparities in High Risk Groups

#### Local Contact Information:

Sonia Ferguson  
phone: 360-740-1489  
fax: 360-740-2698  
email: SA Ferguson@co.lewis.wa.us

Lewis County Social Services  
84 NW Chehalis Avenue  
Chehalis, WA 98532  
website: