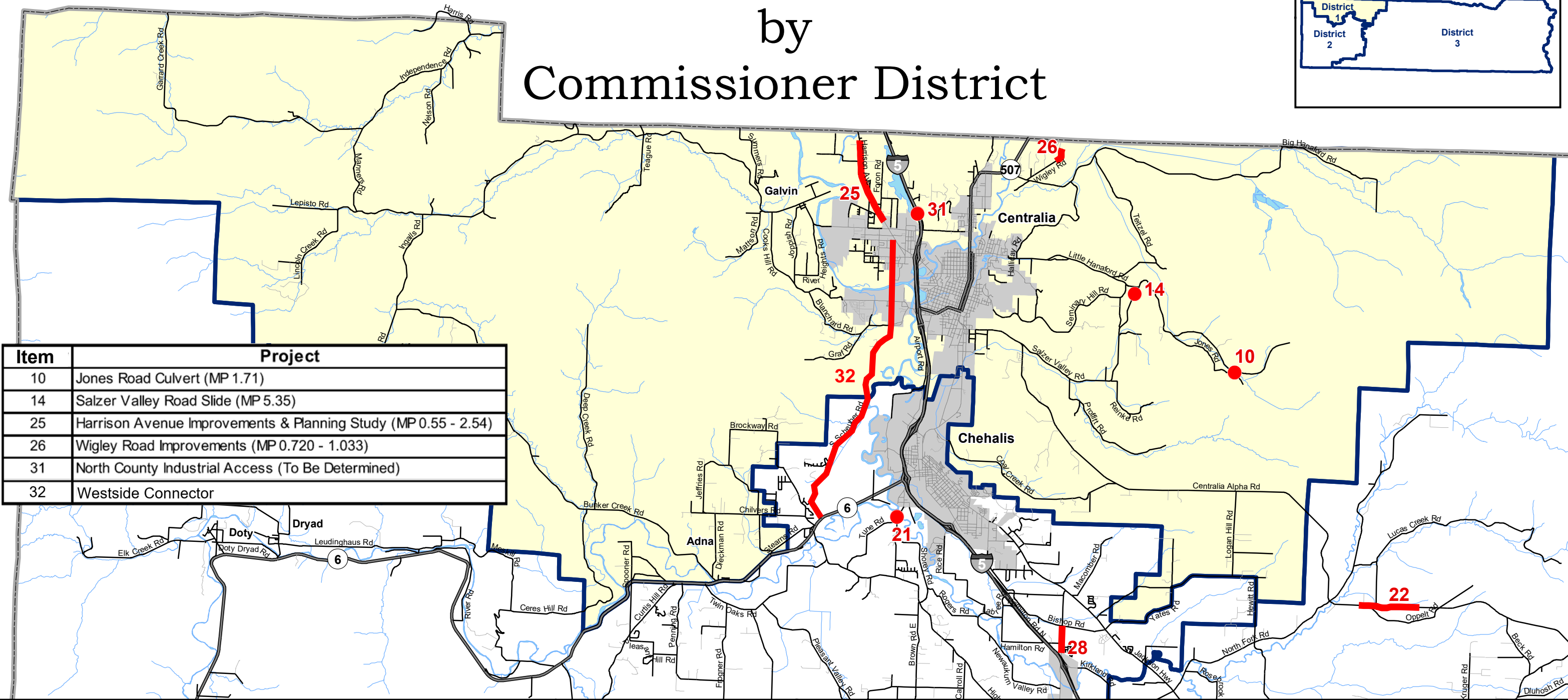
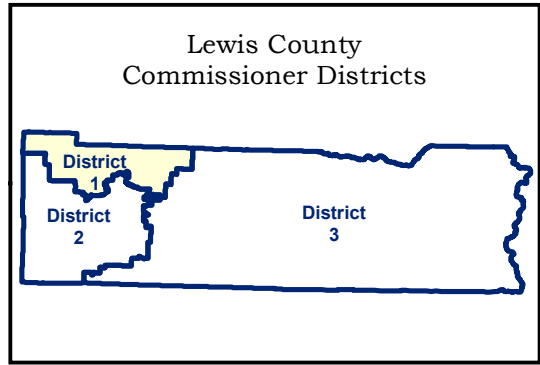


Annual Construction Program For 2022

by Commissioner District

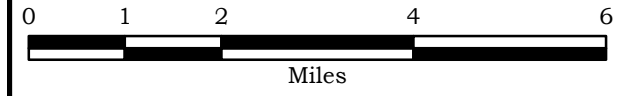


Item	Project
10	Jones Road Culvert (MP 1.71)
14	Salzer Valley Road Slide (MP 5.35)
25	Harrison Avenue Improvements & Planning Study (MP 0.55 - 2.54)
26	Wigley Road Improvements (MP 0.720 - 1.033)
31	North County Industrial Access (To Be Determined)
32	Westside Connector

Commissioner District #1

- Construction projects 1, 5, 7, 8, 16, 17, 19, 20, and 23 are not represented on the map; these projects are listed below in order of priority:**
- (1) Countywide Bridge/Road Bank Protection (Various Roads)
 - (5) Countywide Culvert Replacement (Various Roads)
 - (7) Federal Forest Road Improvements
 - (8) FEMA Repair Projects (Various Roads)
 - (16) Countywide 3R Program (Various Roads)
 - (17) Countywide Paths & Trails
 - (19) Countywide Emergent Construction Projects (Various Roads)
 - (20) Countywide Misc. Safety & Guardrail (Various Roads)
 - (23) 2021 County Safety Program

Construction Projects
labeled by ACP Item Number



This map was created by Lewis County Geographic Information Services. The accuracy of the map has not been verified, and it should be used for informational purposes only. Any possible discrepancies should be brought to the attention of Lewis County Geographic Information Services.



Projection: Lambert Conformal Conic
Datum: 1983 North American Datum
Coordinate System: State Plane Washington South 4602 Feet
O:\maps\eng\AnnualConstProg_CommDist1.mxd