

**BEFORE THE BOARD OF COUNTY COMMISSIONERS
LEWIS COUNTY, WASHINGTON**

IN THE MATTER OF:

RESOLUTION NO. 21-089

CALL FOR BIDS FOR THE L&J FIRE ALARM
REPLACEMENT PROJECT

WHEREAS, the Fire Alarm Control panel and associated equipment servicing the Lewis County Law and Justice Center is at capacity and is no longer supported by the manufacturer; and

WHEREAS, the system has been judged to be at the end of its useful life and is a critical component to the continued operation of the facility; and

WHEREAS, plans and specifications have been created to provide a replacement of the outdated system by Lewis County Facilities and Richmond Engineering.

NOW THEREFORE BE IT RESOLVED that a Call for Bids be issued for the Replacement of the L&J Fire Alarm Replacement Project; and

NOW THEREFORE BE IT FURTHER RESOLVED that the Internal Services Department and Facilities Division prepare and issue bid documents for the above mentioned project.

DONE IN OPEN SESSION this 16th day of March, 2021.

APPROVED AS TO FORM:
Jonathan Meyer, Prosecuting Attorney

BOARD OF COUNTY COMMISSIONERS
LEWIS COUNTY, WASHINGTON

Kevin McDowell
By: Kevin McDowell,
Deputy Prosecuting Attorney

Gary Stamper
Gary Stamper, Chair

ATTEST:



Lindsey R. Pollock, DVM
Lindsey R. Pollock, DVM, Vice Chair

Rieva Lester
Rieva Lester,
Clerk of the Lewis County Board of
County Commissioners

Sean D. Swope
Sean D. Swope, Commissioner

**NOTICE
CALL FOR BIDS
For
Lewis County Law & Justice Center Fire Alarm Replacement Project**

Lewis County is soliciting bids from qualified firms to provide bids for the replacement of a Fire Alarm System in the Law and Justice Center.

Firms desiring consideration shall submit a complete bid package based on the plans and specifications on file to Lewis County Clerk of the Board, 351 NW North Street, Room 210, Chehalis, WA 98532 by 3:00 PM on April 8, 2021.

For more information about the project, please contact Lewis County Capital Facilities Manager Doug Carey at Doug.Carey@lewiscountywa.gov.

Lewis County is an equal opportunity and affirmative action employer. Minority- and women-owned firms are encouraged to submit bids.

DATED this 16th day of March 2021.



Clerk of the Board of County Commissioners
Lewis County, WA

PUBLISH: Chronicle – March 18 & April 1, 2021
Lewis County Web Site <https://lewiscountywa.gov/departments/central-services/facilities/facilities-call-for-bids/>



FIRE ALARM SYMBOLS:

- MANUAL PULL STATION
- SMOKE DETECTOR, PHOTOELECTRIC
- FLAME DETECTOR (THERMAL) [R = RATE OF RISE] (V = TRUED)
- FLAME DETECTOR (THERMAL) [H=HEAT/SMOKE] DETECTOR
- COMBINATION PNEUMATIC SAMPER
- SMOKE DETECTOR, PHOTOELECTRIC
- FIRE ALARM HORN/STROBE
- BELL/CHIME
- FIRE ALARM STROBE
- FIREMAN'S INTERCOM JACK
- TRANSFORMER, 120V/240V
- TRANSFORMER, 120V/240V
- FIRE ALARM CONTROL PANEL
- FIRE ALARM REMOTE ANNUNCIATOR PANEL
- FIRE ALARM SYSTEM INTERFACE/RELAY, INITIATING OR SIGNAL
- ROLL-UP FIRE DOOR
- EXISTING
- DEVICE TO BE ADDED TO SYSTEM (AND EXISTING DEVICE)
- CARBON MONOXIDE SMOKE (ADD TO SYSTEM)

DEVICE MOUNTING LOCATIONS

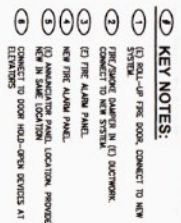
- UNLESS INDICATED OTHERWISE ON PLANS AND DETAILS, LOCATE DEVICES AS FOLLOWS:
- RECEP/FALZES +18 INCHES AFF (CENTRULING)
- RECEP/FALZES ABOVE COUNTERS +4 INCHES AFF (CENTRULING, ABOVE COUNTER)
- CLOCK OUTLETS +48 INCHES AFF (CENTRULING)
- LIGHT SWITCHES +48 INCHES AFF (CENTRULING)
- PANELS - POWER +28 INCHES AFF (TOP OF PANEL)
- VOICE/DATA OUTLETS +18 INCHES AFF
- VOICE OUTLET - WALL +24 INCHES AFF
- MANUAL PULL STATION +48 INCHES AFF WALL, 42 INCHES AFF WALL (CENTRULING)
- SPEAKER/HORN/STROBE UNIT +48 INCHES AFF TO EXTEND 48 INCHES MAX TO TOP, BUT NOT CLOSER THAN 8 INCHES FROM CEILING
- SMOKE DETECTORS 4 INCHES MINIMUM FROM WALL, 36 INCHES MIN. FROM DRILL/REGISTRI/OFFSET
- PANELS - CONTROL, GRAPHIC, CONTROL UNITS +18 INCHES TO +48 INCHES AFF (CENTRULING OF CONTROLS)

FIRE ALARM SYMBOLS:

- CONTRACTOR IS RESPONSIBLE FOR PROVIDING A FULLY OPERATIONAL FIRE ALARM SYSTEM IN CONFORMANCE WITH THE FOLLOWING REQUIREMENTS: STRUCTURE, INCLUDING SHOP DRAWINGS, SPECIFICATIONS, CALCULATIONS, AND SUBMISSION TO THE LOCAL AUTHORITY.
- CONTRACTOR SHALL PROVIDE ALL NECESSARY PERMITS, ELEVATOR CODES, AND ALL (CURRENT EDITIONS), OF NFPA 72, IBC, ETC., N.E.C., APPLICABLE TO THE PROJECT.
- THE CONTRACTOR IS RESPONSIBLE FOR ALL PERMITTING FEES ASSOCIATED WITH THIS WORK.
- ALL EXISTING WIRING-WHETHER FIRE ALARM SYSTEM OR OTHER-RECEP/FALZES SHALL BE REPORTED IN WRITING AND ASSOCIATED WIRING BACK TO PANEL IN MECHANICAL/ELECTRICAL SYSTEMS BE USED WITH EQUIPMENT IN ELECTRICAL, ETC.
- CONTRACTOR SHALL PRE-TEST EXISTING MAGNETIC RECALL DIFFERENCES SHALL BE REPORTED IN WRITING AND ASSOCIATED WIRING BACK TO PANEL IN MECHANICAL/ELECTRICAL SYSTEMS BE USED WITH EQUIPMENT IN ELECTRICAL, ETC.
- CONTRACTOR SHALL PROVIDE ALL DEVICES REQUIRED FOR FULL COMPLIANCE WITH THE LOCAL AUTHORITY. SHOW ALL REQUIRED DEVICES, PROTECT SPACES ABOVE DEVICES, AND PROVIDE PROTECTIVE COVER PLATES AS REQUIRED BY APPLICABLE CODES.
- IS SHOWN ON THIS SHEET, PLUS ADDITIONAL DEVICES, CONTRACTOR SHALL BE RESPONSIBLE FOR THE PLACEMENT AND COUNT IS TO BE DETERMINED BY CONTRACTOR.
- PROVIDE BACT SMOKE DETECTORS AS REQUIRED IN COMPLIANCE WITH THE LOCAL AUTHORITY. CONNECT TO THE ALARM SYSTEM APPROPRIATE TO THE PROJECT.
- REPLACE ALL WIRING, USED EQUIPMENT THAT IS NEW AND RECESSED REMOVE ALL EXISTING RACEWAY.
- REPLACE ALL WIRING, USED EQUIPMENT THAT IS NEW AND RECESSED REMOVE ALL EXISTING RACEWAY.
- FIRE ALARM DEVICES COVERING EMPLOYEE WORK AREAS, INCLUDING BUT NOT LIMITED TO OFFICES, SHALL BE RECESSED TO EASILY SUPPORT INSTALLATION AND MAINTENANCE BY AN EMPLOYEE WITH A DISABILITY IN THE FUTURE.
- CONTRACTOR TO CONFIRM THAT NEW SYSTEM WILL COMPLY WITH ALL APPLICABLE CODES AND STANDARDS.
- PROVIDE FIRE ALARM SYSTEM COMMISSIONING TO THE SATISFACTION OF APPLICABLE CODES AND OWNER.

GENERAL NOTES:

- THIS IS A GENERAL LEGEND SHEET. NOT ALL SYMBOLS SHOWN ARE CONTAINED IN THE PROJECT DRAWINGS.
- GENERAL ELECTRICAL NOTES:
 - THESE DRAWINGS ARE SUPPLEMENTARY ONLY. UNLESS SPECIFIC DIMENSIONS OR MOUNTING HEADERS ARE SHOWN, THE CONTRACTOR SHALL PROVIDE THE MOUNTING HEADERS OF ALL PANELS, DEVICES, FEATURES, ETC.
 - ALL ELECTRICAL WORK SHOWN ON THE DRAWINGS SHALL BE IN ACCORDANCE WITH THE NATIONAL ELECTRICAL CODE AND ALL LOCAL AND STATE CODES AND RULES, ORDINANCES AND REGULATIONS OF THE NATIONAL ELECTRICAL CONTRACTORS ASSOCIATION.
 - THE ELECTRICAL CONTRACTOR IS TO VERIFY ALL EXISTING ELECTRICAL WORK, INCLUDING BUT NOT LIMITED TO, RECALL DIFFERENCES, AND DISCREPANCIES, BEFORE OR AFTER THE START OF THE PROJECT. ANY DISCREPANCIES SHALL BE REPORTED TO THE OWNER'S REPRESENTATIVE PRIOR TO THE START OF THE PROJECT.
 - THE CONTRACTOR SHALL OBTAIN AND PAY FOR ALL LOCAL PERMITS AND INSPECTIONS AS REQUIRED.
 - ALL MATERIALS USED SHALL BE NEW, UNLESS, AND FREE FROM DEFECTS AND SHALL BE LISTED IN THE NATIONAL ELECTRICAL CONTRACTORS ASSOCIATION.
 - THE CONTRACTOR SHALL SUBMIT ONE COMPLETE SET OF SHOP DRAWINGS, INCLUDING BUT NOT LIMITED TO, ELECTRICAL SCHEDULES, PANEL SCHEDULES, AND ELECTRICAL SCHEDULES, TO THE OWNER'S REPRESENTATIVE PRIOR TO THE START OF THE PROJECT.
 - THE ELECTRICAL WORK, EQUIPMENT AND MATERIALS SHALL BE GUARANTEED BY THE CONTRACTOR FOR A PERIOD OF TWO YEARS FROM THE DATE OF COMPLETION OF THE WORK BY THE OWNER OR LONGER AS INDICATED.
 - THE CONTRACTOR SHALL BE NOTIFIED IN WRITING OF ANY DISCREPANCIES OR DEFICIENCIES IN THE WORK, SUCH AS THE NEED FOR ADDITIONAL MATERIALS, PRIOR TO THE START OF THE PROJECT.
 - COORDINATE ALL TELEPHONE, CABLE AND INTERNET SERVICE WORK WITH UTILITY. UTILITY CHARGES PAID BY THE CONTRACTOR.
 - VERIFY ALL EXISTING UTILITY LOCATIONS PRIOR TO THE START OF THE PROJECT. CALL 1-800-454-5000.
 - EXPOSED INTERIOR RACEWAY IS NOT PERMITTED UNLESS IT IS PROTECTED BY A RACEWAY COVER PLATE. RACEWAY SHALL BE RUN PARALLEL WITH AND PERPENDICULAR TO BUILDING STRUCTURAL MEMBERS.
 - VERIFY THE LOCATIONS OF ALL FLOOR BOIES AND RACEWAYS PRIOR TO THE START OF THE PROJECT. RACEWAYS SHALL BE RUN PARALLEL WITH AND PERPENDICULAR TO BUILDING STRUCTURAL MEMBERS.
 - ALL ELECTRICAL EQUIPMENT AND CONDUIT SHALL BE INSTALLED IN ACCORDANCE WITH THE NATIONAL ELECTRICAL CODE AND ALL LOCAL CODES.
 - ALL WIRING SIZES BASED ON 60, 75, 90, 100, 125, 150, 200, 250, 300, 350, 400, 500, 600, 750, 1000, 1250, 1500, 2000, 2500, 3000, 3500, 4000, 5000, 6000, 7500, 10000, 12500, 15000, 20000, 25000, 30000, 35000, 40000, 50000, 60000, 75000, 100000, 125000, 150000, 200000, 250000, 300000, 350000, 400000, 500000, 600000, 750000, 1000000, 1250000, 1500000, 2000000, 2500000, 3000000, 3500000, 4000000, 5000000, 6000000, 7500000, 10000000, 12500000, 15000000, 20000000, 25000000, 30000000, 35000000, 40000000, 50000000, 60000000, 75000000, 100000000, 125000000, 150000000, 200000000, 250000000, 300000000, 350000000, 400000000, 500000000, 600000000, 750000000, 1000000000, 1250000000, 1500000000, 2000000000, 2500000000, 3000000000, 3500000000, 4000000000, 5000000000, 6000000000, 7500000000, 10000000000, 12500000000, 15000000000, 20000000000, 25000000000, 30000000000, 35000000000, 40000000000, 50000000000, 60000000000, 75000000000, 100000000000, 125000000000, 150000000000, 200000000000, 250000000000, 300000000000, 350000000000, 400000000000, 500000000000, 600000000000, 750000000000, 1000000000000, 1250000000000, 1500000000000, 2000000000000, 2500000000000, 3000000000000, 3500000000000, 4000000000000, 5000000000000, 6000000000000, 7500000000000, 10000000000000, 12500000000000, 15000000000000, 20000000000000, 25000000000000, 30000000000000, 35000000000000, 40000000000000, 50000000000000, 60000000000000, 75000000000000, 100000000000000, 125000000000000, 150000000000000, 200000000000000, 250000000000000, 300000000000000, 350000000000000, 400000000000000, 500000000000000, 600000000000000, 750000000000000, 1000000000000000, 1250000000000000, 1500000000000000, 2000000000000000, 2500000000000000, 3000000000000000, 3500000000000000, 4000000000000000, 5000000000000000, 6000000000000000, 7500000000000000, 10000000000000000, 12500000000000000, 15000000000000000, 20000000000000000, 25000000000000000, 30000000000000000, 35000000000000000, 40000000000000000, 50000000000000000, 60000000000000000, 75000000000000000, 100000000000000000, 125000000000000000, 150000000000000000, 200000000000000000, 250000000000000000, 300000000000000000, 350000000000000000, 400000000000000000, 500000000000000000, 600000000000000000, 750000000000000000, 1000000000000000000, 1250000000000000000, 1500000000000000000, 2000000000000000000, 2500000000000000000, 3000000000000000000, 3500000000000000000, 4000000000000000000, 5000000000000000000, 6000000000000000000, 7500000000000000000, 10000000000000000000, 12500000000000000000, 15000000000000000000, 20000000000000000000, 25000000000000000000, 30000000000000000000, 35000000000000000000, 40000000000000000000, 50000000000000000000, 60000000000000000000, 75000000000000000000, 100000000000000000000, 125000000000000000000, 150000000000000000000, 200000000000000000000, 250000000000000000000, 300000000000000000000, 350000000000000000000, 400000000000000000000, 500000000000000000000, 600000000000000000000, 750000000000000000000, 1000000000000000000000, 1250000000000000000000, 1500000000000000000000, 2000000000000000000000, 2500000000000000000000, 3000000000000000000000, 3500000000000000000000, 4000000000000000000000, 5000000000000000000000, 6000000000000000000000, 7500000000000000000000, 10000000000000000000000, 12500000000000000000000, 15000000000000000000000, 20000000000000000000000, 25000000000000000000000, 30000000000000000000000, 35000000000000000000000, 40000000000000000000000, 50000000000000000000000, 60000000000000000000000, 75000000000000000000000, 100000000000000000000000, 125000000000000000000000, 150000000000000000000000, 200000000000000000000000, 250000000000000000000000, 300000000000000000000000, 350000000000000000000000, 400000000000000000000000, 500000000000000000000000, 600000000000000000000000, 750000000000000000000000, 1000000000000000000000000, 1250000000000000000000000, 1500000000000000000000000, 2000000000000000000000000, 2500000000000000000000000, 3000000000000000000000000, 3500000000000000000000000, 4000000000000000000000000, 5000000000000000000000000, 6000000000000000000000000, 7500000000000000000000000, 10000000000000000000000000, 12500000000000000000000000, 15000000000000000000000000, 20000000000000000000000000, 25000000000000000000000000, 30000000000000000000000000, 35000000000000000000000000, 40000000000000000000000000, 50000000000000000000000000, 60000000000000000000000000, 75000000000000000000000000, 100000000000000000000000000, 125000000000000000000000000, 150000000000000000000000000, 200000000000000000000000000, 250000000000000000000000000, 300000000000000000000000000, 350000000000000000000000000, 400000000000000000000000000, 500000000000000000000000000, 600000000000000000000000000, 750000000000000000000000000, 1000000000000000000000000000, 1250000000000000000000000000, 1500000000000000000000000000, 2000000000000000000000000000, 2500000000000000000000000000, 3000000000000000000000000000, 3500000000000000000000000000, 4000000000000000000000000000, 5000000000000000000000000000, 6000000000000000000000000000, 7500000000000000000000000000, 10000000000000000000000000000, 12500000000000000000000000000, 15000000000000000000000000000, 20000000000000000000000000000, 25000000000000000000000000000, 30000000000000000000000000000, 35000000000000000000000000000, 40000000000000000000000000000, 50000000000000000000000000000, 60000000000000000000000000000, 75000000000000000000000000000, 100000000000000000000000000000, 125000000000000000000000000000, 150000000000000000000000000000, 200000000000000000000000000000, 250000000000000000000000000000, 300000000000000000000000000000, 350000000000000000000000000000, 400000000000000000000000000000, 500000000000000000000000000000, 600000000000000000000000000000, 750000000000000000000000000000, 1000000000000000000000000000000, 1250000000000000000000000000000, 1500000000000000000000000000000, 2000000000000000000000000000000, 2500000000000000000000000000000, 3000000000000000000000000000000, 3500000000000000000000000000000, 4000000000000000000000000000000, 5000000000000000000000000000000, 6000000000000000000000000000000, 7500000000000000000000000000000, 10000000000000000000000000000000, 12500000000000000000000000000000, 15000000000000000000000000000000, 20000000000000000000000000000000, 25000000000000000000000000000000, 30000000000000000000000000000000, 35000000000000000000000000000000, 40000000000000000000000000000000, 50000000000000000000000000000000, 60000000000000000000000000000000, 75000000000000000000000000000000, 100000000000000000000000000000000, 125000000000000000000000000000000, 150000000000000000000000000000000, 200000000000000000000000000000000, 250000000000000000000000000000000, 300000000000000000000000000000000, 350000000000000000000000000000000, 400000000000000000000000000000000, 500000000000000000000000000000000, 600000000000000000000000000000000, 750000000000000000000000000000000, 1000000000000000000000000000000000, 1250000000000000000000000000000000, 1500000000000000000000000000000000, 2000000000000000000000000000000000, 2500000000000000000000000000000000, 3000000000000000000000000000000000, 3500000000000000000000000000000000, 4000000000000000000000000000000000, 5000000000000000000000000000000000, 6000000000000000000000000000000000, 7500000000000000000000000000000000, 10000000000000000000000000000000000, 12500000000000000000000000000000000, 15000000000000000000000000000000000, 20000000000000000000000000000000000, 25000000000000000000000000000000000, 30000000000000000000000000000000000, 35000000000000000000000000000000000, 40000000000000000000000000000000000, 50000000000000000000000000000000000, 60000000000000000000000000000000000, 75000000000000000000000000000000000, 100000000000000000000000000000000000, 125000000000000000000000000000000000, 150000000000000000000000000000000000, 200000000000000000000000000000000000, 250000000000000000000000000000000000, 300000000000000000000000000000000000, 350000000000000000000000000000000000, 400000000000000000000000000000000000, 500000000000000000000000000000000000, 600000000000000000000000000000000000, 750000000000000000000000000000000000, 1000000000000000000000000000000000000, 1250000000000000000000000000000000000, 1500000000000000000000000000000000000, 2000000000000000000000000000000000000, 2500000000000000000000000000000000000, 3000000000000000000000000000000000000, 3500000000000000000000000000000000000, 4000000000000000000000000000000000000, 5000000000000000000000000000000000000, 6000000000000000000000000000000000000, 7500000000000000000000000000000000000, 10000000000000000000000000000000000000, 12500000000000000000000000000000000000, 15000000000000000000000000000000000000, 20000000000000000000000000000000000000, 25000000000000000000000000000000000000, 30000000000000000000000000000000000000, 35000000000000000000000000000000000000, 40000000000000000000000000000000000000, 50000000000000000000000000000000000000, 60000000000000000000000000000000000000, 75000000000000000000000000000000000000, 100000000000000000000000000000000000000, 125000000000000000000000000000000000000, 150000000000000000000000000000000000000, 200000000000000000000000000000000000000, 250000000000000000000000000000000000000, 300000000000000000000000000000000000000, 350000000000000000000000000000000000000, 400000000000000000000000000000000000000, 500000000000000000000000000000000000000, 600000000000000000000000000000000000000, 750000000000000000000000000000000000000, 1000000000000000000000000000000000000000, 1250000000000000000000000000000000000000, 1500000000000000000000000000000000000000, 2000000000000000000000000000000000000000, 2500000000000000000000000000000000000000, 3000000000000000000000000000000000000000, 3500000000000000000000000000000000000000, 4000000000000000000000000000000000000000, 5000000000000000000000000000000000000000, 6000000000000000000000000000000000000000, 7500000000000000000000000000000000000000, 100, 12500000000000000000000000000000000000000, 15000000000000000000000000000000000000000, 200, 25000000000000000000000000000000000000000, 300, 35000000000000000000000000000000000000000, 400, 500, 6000000000000



APPROPRIATE LAYOUT OF EXISTING FIRE ALARM SYSTEM IS SHOWN ON THIS SHEET, PLUS ADDITIONAL DEVICES.

PROVIDE DUCT SMOKE DETECTORS AS REQUIRED IN OUTLET FROM AIR HANDLING EQUIPMENT AND CONNECT TO THE ALARM SYSTEM.

DRAWINGS WERE PREPARED FROM PREVIOUS PROJECT DOCUMENTS AND SITE OBSERVATIONS, AND MAY NOT BE AN ACCURATE AS-BUILT CONDITION. CONTRACTOR TO VERIFY BEFORE BEGINNING WORK.



RICHMOND
ENGINEERING, LLC
3721 GRIFFIN LANE SOUTHEAST
OLYMPIA, WA 98501
360.956.0384
WWW.RICHMONDSYSTEMS.COM

| | |
|-----------|-----------|
| DESIGNED: | SCS |
| DRAWN: | TMP |
| DATE: | 1/28/2021 |

| | | |
|---|--------------|-------|
| DRAWINGS ARE FULL SIZE AT 24x36 SCALE IS INDICATED ON DRAWING. | PROJECT NO.: | 5623 |
| | SHEET: | FA5.1 |

THESE DRAWINGS ARE FULL SIZE AT PAPER SCALE IS INDICATED ON DRAWING

PROJECT NO: 5623
SHEET: 5623
TITLE: FA5.2

CHEHALIS, WA 98532
LEWIS COUNTY
COURTHOUSE FIRE ALARM SYSTEM
LEVEL TWO FIRE ALARM SYSTEM AS BUILT

| DATE | BY | CHK | REVISION |
|------|----|-----|----------|
| | | | |
| | | | |
| | | | |
| | | | |



PREPARED BY:
RICHMOND ENGINEERING, LLC
3221 GRIFFIN LANE SOUTHEAST
OLYMPIA, WA 98501
360.956.0364
WWW.RICHMONDENGINEERING.COM

DATE: 1/28/2021
DRAWN: TMAP
SCS
DESIGNED:

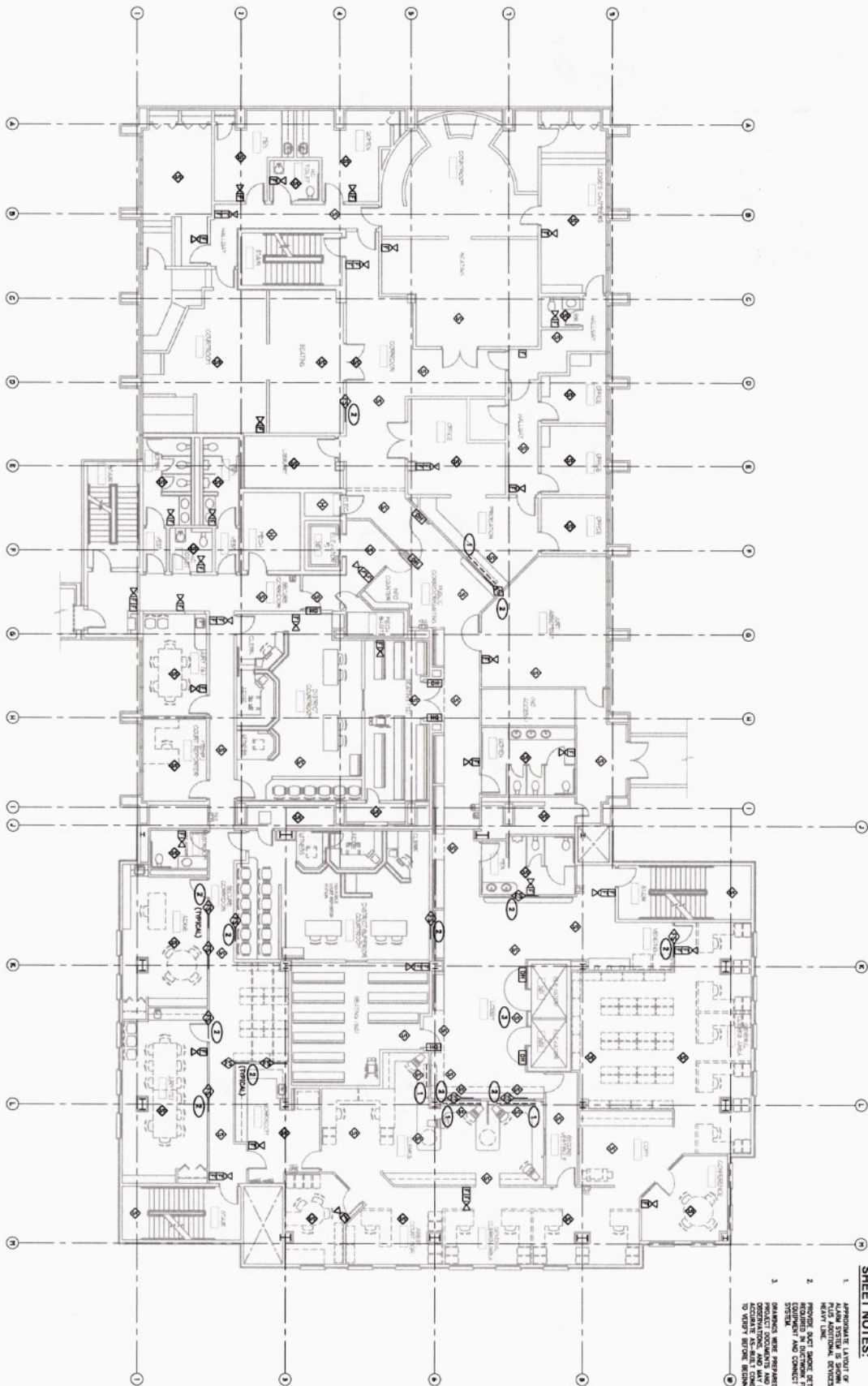
- KEY NOTES:**
- 1. ROLL-UP FIRE DOOR, CONNECT TO NEW SYSTEM
 - 2. FIRE/SMoke DAMPER IN (3) DUCTWORK, CONNECT TO NEW SYSTEM
 - 3. CONNECT TO DOOR HOLD-OPEN DEVICES AT ELEVATORS

SHEET NOTES:

- 1. APPROXIMATE LAYOUT OF EXISTING FIRE ALARM SYSTEM, INCLUDING DETECTORS, PLUS ADDITIONAL DEVICES, TO BE INSTALLED.
- 2. PROVIDE DETECTORS DETECTORS AS SHOWN, INCLUDING DETECTORS OF SMOKE, HEAT, AND GLASS BREAK, AND EQUIPMENT AND CONNECT TO FIRE ALARM SYSTEM.
- 3. NEW DETECTORS ARE PROVIDED FROM PREVIOUS PROJECT DOCUMENTS AND SITE OBSERVATION, AND MAY NOT BE AN ACCURATE REPRESENTATION OF THE ACTUAL SYSTEM. TO VERIFY BEFORE BEGINNING WORK.



LEVEL TWO FIRE ALARM SYSTEM
SCALE: 1/8" = 1'-0"



KEY NOTES:

- 1. [Symbol] KILL-UP FIRE DOOR, CONNECT TO NEW SYSTEM.
- 2. [Symbol] PULL STATION, CONNECT TO NEW SYSTEM.
- 3. [Symbol] CONNECT TO ROOM HOLD-OPEN DEVICES AT ELEVATORS.

SHEET NOTES:

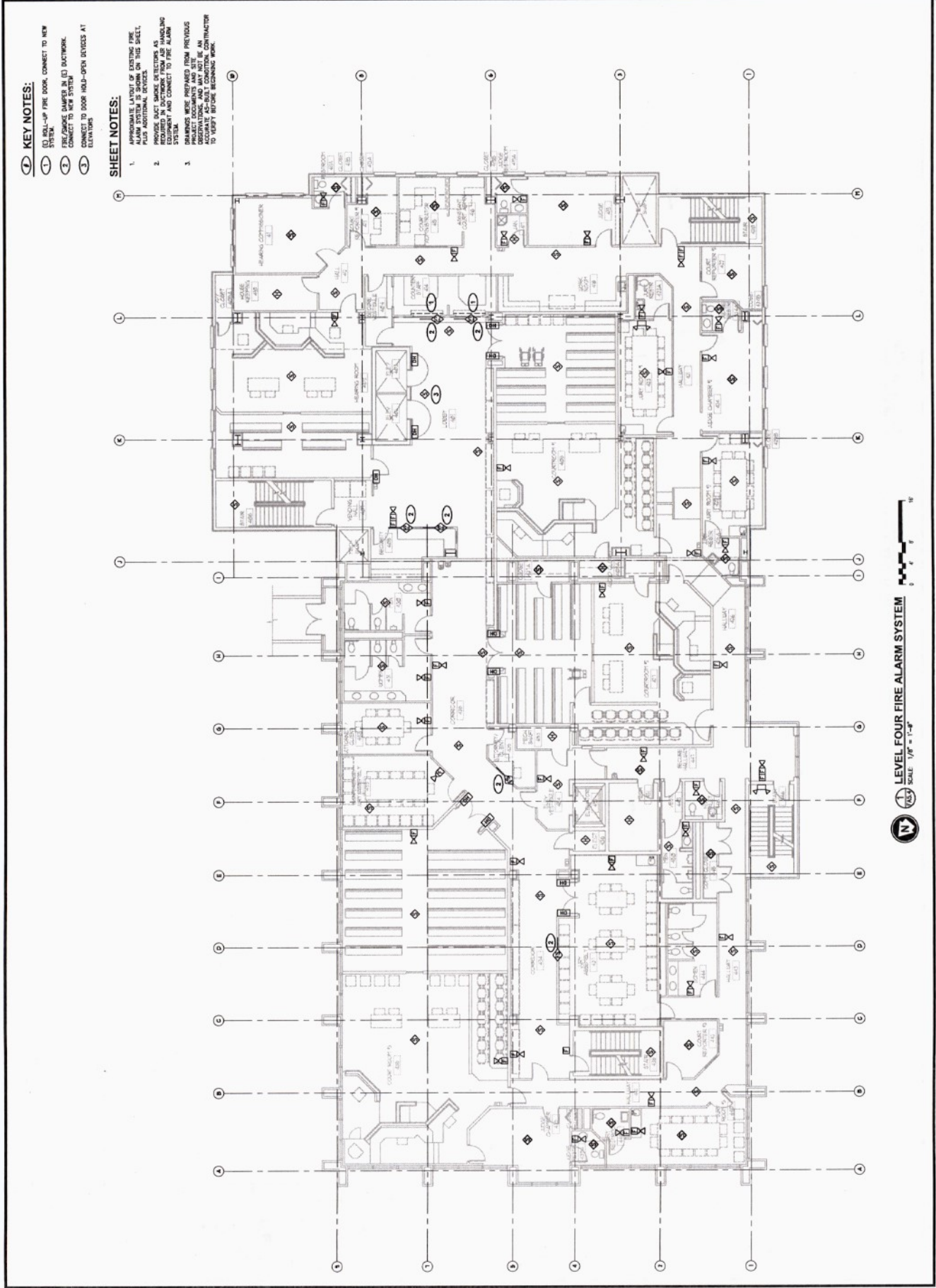
1. APPROXIMATE LAYOUT OF EXISTING FIRE ALARM SYSTEM IS SHOWN ON THIS SHEET. ALL NEW DEVICES AND WIRING SHALL BE INSTALLED IN ACCORDANCE WITH THE LATEST EDITION OF THE NFPA 72.
2. PROVIDE SMOKE SMOKE DETECTORS AS REQUIRED IN ACCORDANCE WITH THE LATEST EDITION OF THE NFPA 72.
3. DISTANCES WERE PROVIDED FROM PREVIOUS DRAWINGS. ALL DISTANCES SHALL BE AS SHOWN ON THE DRAWING. CONTRACTOR TO VERIFY ALL DISTANCES.

LEVEL THREE FIRE ALARM SYSTEM
SCALE: 1/8" = 1'-0"

| | | | | |
|------------------------|---|-------------------------------|------------------|---|
| PROJECT NO: 5623 | SHEET CONTENTS: LEVEL THREE FIRE ALARM SYSTEM AS BUILT | DATE BY QTD REVISION | PREPARED BY: | DESIGNED: SCS DRAWN: TMP DATE: 1/28/2021 |
| SHEET: FA5.3 | TITLE: LEWIS COUNTY COURTHOUSE FIRE ALARM SYSTEM CHIDHALIS, WA 98532 | | | |

DRAWINGS ARE FULL SIZE, AT SCALE. SCALE IS INDICATED ON DRAWING.

| | | | |
|------------------|------------------------------|-------------------|---------------------------------------|
| PROJECT NO. 5623 | SHEET NO. 5623 | SHEET TITLE | LEVEL FOUR FIRE ALARM SYSTEM AS BUILT |
| FA5.4 | COURTHOUSE FIRE ALARM SYSTEM | CHICAGO, IL 60602 | DATE 1/28/2021 |
| DESIGNED BY SCS | DRAWN BY TWP | DATE 1/28/2021 | WWW.RICHMONDENGINEERING.COM |
| REVISION | DATE | BY | CHKD |
| PREPARED BY | DATE | BY | CHKD |



DRAWINGS ARE FULL SIZE AT ALL TIMES. SCALE IS INDICATED ON DRAWING.



BID PACKET FOR:

L&J Fire Alarm Replacement Project

Project #31-2100

OFFERED BY:

LEWIS COUNTY
DEPARTMENT OF INTERNAL SERVICES
CAPITAL FACILITIES DIVISION

351 NW North Street
Chehalis, WA 98532

Mailing Address:

351 NW North Street
Chehalis WA 98532

Phone: 360-740-1337

BID PACKET CONTENTS

1. BID ADVERTISEMENT/INSTRUCTIONS TO BIDDERS
2. CHECKLIST
3. PLANS AND SPECIFICATIONS
4. INTERNAL SERVICES CONTRACT/GENERAL CONDITIONS/SPECIAL CONDITIONS
5. PREVAILING WAGE NOTICE
6. PERFORMANCE BOND
7. CERTIFICATE OF INSURANCE
8. NON COLLUSION AFIDAVIT
9. BID FORM

1.

CALL FOR BIDS

CALL FOR BIDS

March 16, 2020

The Lewis County Facilities Division is requesting bids for provision and installation of a new fire alarm system at the Law & Justice Building, 345 W. Main St., Chehalis, WA. Interested bidders should contact the:

Capital Facilities Division Office, 351 N.W. North St., Chehalis, WA. 360 740-1337

For more information and bid materials.

Or online at <https://lewiscountywa.gov/departments/central-services/facilities/facilities-call-for-bids/>

Project Name and #: L&J Fire Alarm Replacement Project

Location of work: 345 W. Main St., Chehalis, WA

Contact Person: Doug Carey, Capital Facilities Manager
(360) 740-1337

Site Visit: By appointment. Please call Doug Carey to schedule.

Bidding Instructions:

Bid envelopes must be sealed and clearly labeled as: **L&J Fire Alarm Replacement Project** and delivered by 3:00 PM on the due date. Bids may be mailed or hand delivered to the Lewis County Clerk of the Board, 351 NW North Street, Room 210, Chehalis, WA 98532. The Bid Opening will take place at 4 p.m. in the Historical Courthouse, 351 NW North St, on the 2nd floor in the BOCC Hearing Room.

Mailing Address:

Lewis County Clerk of Board
351 NW North St., Room 210
Chehalis, WA 98532

Physical Address:

Lewis County Clerk of Board
351 NW North St., Room 210
Chehalis, WA

Bids Due: 3:00 PM Thursday, April 8, 2021

**SEALED BIDS MUST BE DELIVERED BY OR BEFORE
3:00 P.M. on Thursday, April 8, 2021**

(Lewis County official time is displayed on Mitel phones in the Facilities Office. **Bids submitted after 3:00 PM will not be considered for this project.**)

The Lewis County Internal Services Department in accordance with Title VI of the Civil Rights Act of 1964, 78 Stat. 252, 42 U.S.C. 2000d to 2000d-4 and Title 49, Code of Federal Regulations, Department of Transportation, subtitle A, Office of the Secretary, Part 21, nondiscrimination in Federally assisted programs of the Department of Transportation issued pursuant to such Act, hereby notifies all bidders that it will affirmatively ensure that in any contract entered into pursuant to this advertisement, disadvantaged business enterprises will be afforded full opportunity to submit bids in response to this invitation and will not be discriminated against on the grounds of race, color or national origin in consideration for an award.

**INSTRUCTIONS TO BIDDERS
FOR LEWIS COUNTY FACILITIES CONSTRUCTION PROJECTS
PART 0 – GENERAL CONDITIONS**

0.01 EXPLANATION TO PROSPECTIVE BIDDERS

- A. Any prospective bidder desiring an explanation or interpretation of the solicitation, drawings, specifications, etc., must submit a request in writing to the Architect/Engineer (A/E) or owner if no A/E, 7 calendar days before the bid due date. Oral explanations or instructions given before the award of a contract will not be binding. Any information given a prospective bidder concerning a solicitation will be furnished promptly to all other prospective bidders by addendum to the solicitation, if that information is necessary in submitting bids or if the lack of it would be prejudicial to other prospective bidders.
- B. In accordance with the legislative findings and policies set forth in Chapter 39.19 RCW, the State of Washington encourages participation in all of its contracts by Minority and Women's Business Enterprises (MWBE) firms certified by the Office of Minority and Women's Business Enterprises (OMWBE). Participation may be either on a direct basis in response to this invitation or as a subcontractor to a bidder. However, unless required by federal statutes, regulations, grants, or contract terms referenced in the contract documents, no preference will be included in the evaluation of bids, no minimum level of MWBE participation shall be required as a condition for receiving an award, and bids will not be rejected or considered non-responsive on that basis.
- C. Any affirmative action requirements set forth in federal regulations or statutes included or referenced in the contract documents will apply.
- D. In accordance with RCW 39.04.320 the State of Washington requires 15% **Apprenticeship Participation** for all projects estimated to cost one million dollars or more. On applicable projects the bid advertisement and Bid Proposal form shall establish a minimum required percentage of apprentice labor hours compared to the total labor hours. Bidders may contact the Department of Labor and Industries, Specialty Compliance Services Division, Apprenticeship Section, P.O. Box 44530, Olympia, WA 98504-4530, by phone (360) 902-5320, and e-mail at thum235@lni.wa.gov, to obtain information on available apprenticeship programs.

0.02 PREPARATION OF BIDS – CONSTRUCTION

- A. Bids must be: (1) submitted on the bid proposal forms, or copies of forms, furnished by the Owner or the Owner's agent, and (2) signed in ink. The person signing a bid must initial each change appearing on any bid form. If the bid is made by a corporation, it shall be signed by the corporation's authorized designee. The address of the bidder shall be typed or printed on the bid form in the space provided.
- B. The bid form may require bidders to submit bid prices for one or more items on various bases, including: (1) lump sum base bid; (2) lump sum bid alternate prices; (3) unit prices; or (4) any combination of items (1) through (3) above.
- C. If the solicitation includes alternate bid items, failure to bid on the alternates may disqualify the bid. If bidding on all items is not required, bidders should insert the words "no bid" in the space provided for any item on which no price is submitted.
- D. Substitute bid proposals will not be considered unless this solicitation authorizes their submission.

0.03 BID GUARANTEE

- A. When the sum of the base bid plus all additive bid alternates is \$35,000.00 or less, bid security is not required. When the sum of the base bid plus all additive alternates is greater than \$35,000.00, a bid guarantee in the amount of 5% of the base bid amount is required. Failure of the bidder to provide bid guarantee when required shall render the bid non-responsive.
- B. Acceptable forms of bid guarantee are: A bid bond or postal money order, or certified check or cashier's check made payable to the Lewis County Treasurer. The Owner will return bid guarantees (other than

bid bond) to unsuccessful bidders as soon as practicable, but not sooner than the execution of a contract with the successful bidder. The successful bidder's bid guarantee will be returned to the successful bidder with its official notice to proceed with the work of the contract.

- C. The bidder will allow 60 days from bid opening date for acceptance of its bid by the Owner. The bidder will return to the Owner a signed contract, insurance certificate and bond or bond waiver within 15 days after award of the contract. If the apparent successful bidder fails to sign all contractual documents or provide the bond and insurance as required or return the documents within 15 days after award of the contract, the Owner may terminate the award of the contract.
- D. In the event a bidder discovers an error in its bid following the bid opening, the bidder may request to withdraw its bid under the following conditions:
 - 1. Written notification is received by the Owner within 24 hours following bid opening.
 - 2. The bidder provides written documentation of the claimed error to the satisfaction of the Owner within 72 hours following the bid opening. The Owner will approve or disapprove the request for withdrawal of the bid in writing. If the bidder's request for withdrawal of its bid is approved, the bidder will be released from further obligation to the Owner without penalty. If it is disapproved, the Owner may retain the bidder's bid guarantee.

0.04 ADDITIVE OR DEDUCTIVE BID ITEMS

- A. The low bidder, for purposes of award, shall be the responsive bidder offering the low aggregate amount for the base bid item, plus additive or deductive bid alternates selected by the Owner, and within funds available for the project. The bidder agrees to hold all bid alternate prices until bid award and contract execution.

0.05 ACKNOWLEDGEMENT OF ADDENDA

- A. Bidders shall acknowledge receipt of all addenda to this solicitation by identifying the addenda numbers in the space provided for this purpose on the bid proposal form. Failure to do so may result in the bid being declared non-responsive.

0.06 SITE INVESTIGATION AND CONDITIONS AFFECTING THE WORK

- A. The bidder acknowledges that it has taken steps necessary to ascertain the nature and location of the work, and that it has investigated and satisfied itself as to the general and local conditions which can affect the work or its cost, including but not limited to (1) conditions bearing upon transportation, disposal, handling, and storage of materials; (2) the availability of labor, water, electric power, and road; (3) uncertainties of weather, river stages, tides, or similar physical conditions at the site; (4) the conformation and conditions of the ground; and (5) the character of equipment and facilities needed preliminary to and during the work. The bidder also acknowledges that it has satisfied itself as to character, quality, and quantity of surface and subsurface materials or obstacles to be encountered insofar as this information is reasonably ascertainable from an inspection of the site, including exploratory work done by the Owner, as well as from the drawings and specifications made a part of this contract. Any failure of the bidder to take the actions described and acknowledged in this paragraph will not relieve the bidder from responsibility for estimating properly the difficulty and cost of successfully performing the work.

0.07 BID AMOUNTS

- A. The bid prices shown for each item on the bid proposal shall include all labor, material, equipment, overhead and compensation to complete all of the work for that item.
- B. The actual cost of building permit (only) and the public utility hookup fees will be a direct reimbursement to the Contractor or paid directly to the permitting agency by the Owner. Fees for these permits should not be included by the Bidder in the bid amount.
- C. The Bidder agrees to hold the base bid prices until bid award and contract execution.

0.08 TAXES

- A. The bid amounts shall not include Washington State Sales Tax (WSST). All other taxes imposed by law shall be included in the bid amount. The Owner will include WSST in progress payments. The Contractor shall pay the WSST to the Department of Revenue and shall furnish proof of payment to the Owner if requested. [NOTE: Contractor must bond for contract amount plus the WSST.]

0.09 SUBMISSION OF BIDS

- A. Bid Proposals must be submitted on or before the time specified in the Advertisement for Bids.
- B. If the base bid and the sum of the additive alternates is one million dollars or more, the Bid Proposal shall comply with the following requirements:
 - 1. Pursuant to RCW 39.30.060, if the base bid and the sum of the additive alternates is one million dollars or more, the Bidder shall provide names of the Subcontractors with whom the Bidder will subcontract for performance of heating, ventilation and air conditioning (HVAC), plumbing, and electrical.
 - 2. The Bidder can name itself for the performance of the work.
 - 3. The Bidder shall not list more than one Subcontractor for each category of work identified UNLESS Subcontractors vary with bid alternates, in which case the Bidder must indicate which Subcontractor will be used for which alternate.
 - 4. Failure of the Bidder to submit as part of the bid the NAMES of such Subcontractors or to name itself to perform such work shall render the Bidder's bid nonresponsive and, therefore, void.
- C. The Bid Proposal shall be submitted in a sealed envelope addressed to the office specified in the Advertisement for Bids. The envelope shall have printed on the outside:
 - 1. The project number and description.
 - 2. The name and address of the bidder.
 - 3. Identification as Bid Proposal.
- D. Prior to the bid opening, the Owner's representative will designate the official bid clock. Any part of the bid proposal or bid modification not received prior to the times specified, per the designated bid clock, will not be considered and the bid will be returned to the bidder unopened.
- E. A bid may be withdrawn in person by a bidder's authorized representative before the opening of the bids. Bidder(s) representative will be required to show ID and sign on bid summary sheet before it will be released.
- F. People with disabilities who wish to request special accommodation, (e.g., sign language interpreters, Braille, etc.) need to contact the Owner ten (10) working days prior to the scheduled bid opening.

0.10 BID RESULTS

- A. After the Bid Opening, Bidders may obtain the tabulation of apparent bids from Lewis County by calling (360) 740-1192 or accessing the project information page on the Lewis County website.

0.11 LOW RESPONSIBLE BIDDER

- A. If applicable, it is the intent of the Owner to award a contract to the low responsible bidder. In determining the bidder's responsibility, the Owner shall consider an overall accounting of the attached **"DIVISION 00 RESPONSIBILITY CRITERIA"**. Upon Owner's request, the apparent low bidder must supply the requested information within two (2) business days of request by Owner. Withholding information or failure to submit all the information requested within the time provided shall render the bid nonresponsive. If the Owner determines that the apparent low bidder is not responsible, the Owner will notify the bidder of its preliminary determination in writing. Within three (3) days after receipt of the preliminary determination, the bidder may withdraw its bid or request a hearing. The Owner will schedule a hearing within three (3) working days of receipt of the bidder's request. The hearing members will include the Central Services Director, Public Works Director and Central Services Project Manager. The Owner will issue a Final Determination after reviewing information presented at the

hearing. The Owner's Final Determination is specific to this project, and will have no effect on other or future projects.

B. **"SUBCONTRACTOR RESPONSIBILITY CRITERIA"** In accordance with SHB 2010 amending RCW 39.04 the Contractor shall include the language of this paragraph in each of its first tier subcontracts, and shall require each of its subcontractors to include the same language of this section in each of their subcontracts, adjusting only as necessary the terms used for the contracting parties. The requirements of this paragraph apply to all subcontractors regardless of tier. At the time of subcontract execution, the Contractor shall verify that each of its first tier subcontractors meets the following bidder responsibility criteria:

1. Have a current certificate of registration as a contractor in compliance with chapter 18.27 RCW, which must have been in effect at the time of subcontract bid submittal;
2. Have a current Washington Unified Business Identifier (UBI) number; and if applicable, have:
 - a. Have Industrial Insurance (workers' compensation) coverage for the subcontractor's employees working in Washington, as required in Title 51 RCW;
 - b. A Washington Employment Security Department number, as required in Title 50 RCW;
 - c. A Washington Department of Revenue state excise tax registration number, as required in Title 82 RCW;
 - d. An electrical contractor license, if required by Chapter 19.28 RCW;
 - e. An elevator contractor license, if required by Chapter 70.87 RCW.
 - f. Not be disqualified from bidding on any public works contract under RCW 39.06.010 or 39.12.065 (3).

0.12 CONTRACT AWARD

A. The Owner will evaluate bid responsiveness and bidder responsibility.

A bid will be considered responsive if it meets the following requirements:

1. It is received at the proper time and place.
2. It meets the stated requirements of the bid proposal.
3. It is submitted by a licensed/registered contractor within the State of Washington at the time of bid opening and is not banned from bidding by the Department of Labor and Industries.
4. It is accompanied by a bid guarantee, if required.

A bid will be considered responsible if it meets the following requirements:

1. It meets an overall accounting of the responsibility criteria established for the project.
- B. The Owner reserves the right to accept or reject any or all bid proposals and to waive informalities that do not affect the essential fairness of the bidding process.
- C. The Owner may negotiate bid price adjustments with the low responsive bidder, including changes in the contract documents, to bring the bid within the available funding per RCW 39.04.015.
- D. The apparent low bidder, for purpose of award, shall be the responsive bidder offering the low aggregate amount for the base bid plus selected additive or deductive bid alternates and meeting all other bid submittal requirements.
- E. The Contract will only become effective when signed by the Owner. Prior to the Owner's signature, any and all costs incurred shall be the sole responsibility of the bidder.

Division 00
Responsibility Criteria
Low Responsible Bidder

It is the intent of the Owner to award a contract to the low responsible bidder. In determining the bidder's responsibility, the Owner shall consider an overall accounting of the items listed below. The bidder must submit the following information, demonstrating that they meet the listed criteria:

1. Capacity

| Category | Required Information / Criteria |
|---|---|
| <input type="checkbox"/> Current Workload | <p>On a separate sheet, list all the major projects your firm has in progress or are projected to commence during the next 6 months, giving the name of project, Owner, architect, contract amount, percentage complete and scheduled completion date. Failure to list all major projects shall render the bid non-responsive.</p> <p>List the current or projected workload for the next 12 months including this Contract, expressed in total contract value. \$ _____</p> <p>List actual contracted workload for the previous 12 months, expressed in total contract value. \$ _____</p> <p>The bidder's current or projected workload, during the life of this contract, shall not exceed 150% of the actual contracted workload over the previous 12 months unless the bidder can demonstrate to the Owner's satisfaction that it has the capacity to assume the additional work of this project, provide adequate staffing, and meet project demands.</p> |

2. Previous Experience

| Category | Required Information / Criteria |
|---|---|
| <input type="checkbox"/> List of Completed Projects | <p>On a separate sheet, list all the major projects (\$75,000 and above) your firm has completed in each of the past five (5) years, giving the name of project, Owner (contact name and phone numbers), architect (contact name and phone numbers), contract amount, date of completion and percentage of the cost of the work performed with your own forces. This information will be used for references.</p> |

- ☐ Experience of Superintendent or Project Manager

Submit resume and references if different than above, of the person proposed by the bidder to superintend the work. This person shall have managed projects of similar complexity and similar size, and successfully completed the project within the last three (3) years.

Superintendent and/or Project Manager shall not be replaced on the project without full consent of the Owner.

- ☐ Equipment

Submit affidavit that firm has equipment necessary to perform all phases of work, including HMA pavers, planning or grinding machines, asphalt saws, etc.

☐

3. Ability to Perform Within Time Specified

| Category | Required Information / Criteria |
|--|---|
| <input type="checkbox"/> Contractor's Ability to Meet the Project Schedule | On a separate sheet, list the project titles, original contract time, and change order time extensions for three specific projects. Bidder shall document that it achieved substantial completion of three previous projects of similar size and scope within no more than 105% of the final contracted time for completion (including change ordered adjustments). |

4. References

| Category | Required Information / Criteria |
|--|---|
| <input type="checkbox"/> References from Owners of Previous Projects | Owner will check references by contacting owners of previous projects on bidder's performance over the last five years. On average, such references shall be satisfactory or better on a five category scale with "satisfactory" at mid-scale. A reference score sheet will be utilized for rating completed projects of similar scope and value. |
| <input type="checkbox"/> Public Agency Debarment | Bidder shall not have been debarred by any Public agency within the last two (2) years. |

The apparent low bidder must provide the above required information within two (2) working days of receiving Owner notification. Failure to submit such information to the satisfaction of the Owner within the time provided shall render the bid non-responsive.

If the Owner determines that the apparent low bidder is not responsible, the Owner will notify the bidder of its preliminary determination in writing. Within three (3) days after receipt of the preliminary determination, the bidder may withdraw its bid or may request a hearing. The Owner will schedule a hearing within three (3) working days of receipt of the bidder's request. The Owner will issue a Final

Determination after reviewing information presented at the hearing. The Owner's Final Determination is specific to this project, and will have no effect on other or future projects.

2.

DOCUMENT CHECK LIST

(Lewis County Forms Only)

The following items must be returned in the completed bid package:

1. Signed Bid Form
2. Performance Bond
3. Certificate of Insurance
4. Signed Non-Collusion Affidavit

3.

Project Scope and Specifications

EXHIBIT A

SCOPE OF WORK

Scope of Work: Contractor to provide a fully functional Fire Alarm System to replace the existing system in the Lewis County Law and Justice Center. As per specifications below and in conjunction with plans provided and in accordance with all requirements of the NFPA, WAC, EBC/IBC and AHJ.

This standard is to be used in the development of all fire alarm and signaling system designs for buildings and structures managed by Lewis County.

This standard is to apply to all fire alarm and signaling system components and equipment installed at any building managed by Lewis County during new construction or as part of any building rehabilitation project as defined by NFPA.

The work addressed in this section consists of a fire protection system, which may include and at least will be coordinated with all of the following building systems or components:

- Fire Suppression Systems.

- HVAC, fire, smoke and combination fire/ smoke dampers.

- Emergency Power Systems.

- Elevator Systems.

- Central Control and Monitoring System.

- Security Systems.

- Gas Detection Systems.

- Mass Notification Systems.

- Smoke Control Systems.

System Features

All system product lines shall be comprised of components capable of providing the following features when appropriate and specified by the project documents or the county.

- Floor above and below notification.

- Private alarm notification.

- Elevator capture/recall.

- Elevator power shunt trip.

- Smoke control/Fan shutdown.

- Door release.

- Coordination of Security door locks and normally locked egress doors.

- Release and monitoring of clean agent and or pre-action sprinkler systems.

- Alarm Verification.

- Monitor non-water based fire suppression systems.

- Provisions for Mass Communication notification.

Description of Work

All designs shall provide for each building a complete and working digital, addressable, closed circuit, automatic and manual fire detection/alarm and signaling system for each floor of the building to perform detection, monitoring, signaling and other alarm and control functions for the building. Any AC or line voltage power to fire alarm components shall be installed/provided by the fire alarm contractor.

Fire Alarm and Signaling System Engineering Documents and Bid Design Documents.

Approval and Acceptance.

The Authority Having Jurisdiction (AHJ) and FSSS shall be notified prior to installation or alteration of equipment or wiring.

At the AHJ's and FSSS request, complete information regarding the system or system alterations, shall be submitted for approval.

Neither approval nor acceptance by the AHJ and FSSS shall relieve the designer or installer's from providing a system compliant with all governing laws, codes or standards.

Deviations from requirements of governing laws, codes or standards, shall be clearly identified and documented as such. Documentation of equivalencies shall be provided in accordance with NFPA 72, Section 1.5.

Design Documents.

Prior to installing new systems, replacing an existing system, or upgrading a System, preliminary design documents shall be prepared and submitted to Facilities Planning and Construction for approval.

Systems that are altered shall have design documents prepared that are applicable to the portion(s) of the system being altered and submitted to Facilities Planning and Construction.

Preliminary design documents shall contain but are not limited to the following information related to the system.

Specifications applicable to the project.

When devices are shown on preliminary drawings, the devices shall be located in accordance with standards, listings, and limitations of the equipment specified. When no particular product limitations are specified, the prescriptive criteria of applicable standards shall be used.

Interface between systems such as fire alarm, mass notification, security, HVAC, smoke control, elevators, access control, other fire protection systems, etc.

Input/ Output matrix showing sequence of operation between actions.

The location of detectors used to monitor HVAC systems, close dampers and or control smoke management systems shall be the sole responsibility of the fire alarm system engineer, and or preliminary design professional. The engineer, and or preliminary design professional of fire alarm system shall coordinate with the mechanical engineer to properly locate detectors used to monitor HVAC systems, close dampers and or control smoke management systems.

Quality Assurance.

Fire Alarm Contractor Qualifications:

The contractor shall have a minimum of 2 factory trained and certified technicians for the system proposed.

Equipment furnished shall be of a current manufacture and non-proprietary.

Fire Alarm and signaling System Drawing Designer and System Programmer:

Shop drawings shall be revised as necessary following installation to represent as-built conditions and include record drawings on all new systems and any system modifications. As-built shop drawings shall be submitted to Facilities Planning and Construction.

System Installer:

The system installer(s) shall provide a passing background check through Lewis County.

The system installer(s) shall complete any required training to be in restricted areas.

The system installer(s) will work shifts determined by Lewis County, to include off hours or days as directed.

The Contractor shall provide any signage or relevant labels related to the Fire alarm system.

The Contractor shall provide maximum coverage to building until new system is fully functioning and tested.

Submittals

Prior to installation, the following documents shall be provided to Lewis County and AHJ.

Shop Drawings: Include manufacturer's name, model numbers, ratings, power requirements, equipment layout, conduit, device arrangement, and complete point to point wiring diagrams along with other required information including but not limited to:

General Drawing Notes.

Control Equipment Schedules.

Panel Schematics showing all connections, between modules within panels, to all modules from field wiring with zones identified.

Riser Diagrams indicating circuits, type of devices, number of devices, number of conductors, conduit size, junction boxes and zones.

Addressable numbers and locations for all devices.

Detailed input/output matrix.

Product Data: Provide electrical characteristics, connection requirements and compatibility listing showing that components are compatible with each other including but not limited to:

Full equipment list including model numbers and quantities.

Complete system operation.

Highlighted Data Sheets on Devices and Products.

Fire Alarm Control Panel.

Wiring.

Batteries.

Detectors.

Manual Stations.

Audible Signaling Devices.

Equipment maintenance manuals.

Visual Signaling Devices.

Control Devices.

Wiring diagrams of all equipment.

Installation instructions for all equipment.

Equipment testing procedures.

Equipment maintenance manuals.

Wire Data sheets.

Software and Database Information:

Proposed point numbers.

Labels of all addressable devices.

Add programming rules, Equations, with comments listed.

Products

Fire alarm Control Units.

Manufacturers must be approved by Lewis County.

Panels shall have provisions for smoke detector "Alarm Verification" for Signaling Line Circuits shall be provided.

TERMINAL BOX are NOT allowed, system should be designed and installed panel to device and device to device.

With each installed field device, affix a label to indicate the devices full address on its signaling line circuit.

Legibly mark each cable or wire to designated terminal with labeling tool. All labels must include both source and destination at each end of the cable or wire.

All FACU's shall provide twenty percent excess power supply, input circuit, and output circuit capacity at final acceptance to allow for future expansion by the owner.

Zone labeling shall be textual by alpha-numeric display at the FACU and remote annunciator to allow "first response" persons not trained in Fire alarm technology.

Textual (alpha-numeric) Language shall be conventional, concise, clear and accurate to facilitate rapid response. The label shall contain the device type, floor location, equipment or area served and an exact device location.

Remote Monitor.

All systems shall be capable of interconnection to the current Lewis County 911 system Supervisory Signaling System.

Contractors shall coordinate and program communications to Lewis County 911 Supervisory Signaling System.

Manual Pull Stations.

All manual pull stations shall be of the "double-action" type to reduce unintentional or vandal alarms. Pull stations required to break glass to activate are not acceptable. Provide pull stations that utilize the same key as FACU for resetting.

Each manual pull station shall have a unique digital address on the SLC.

Signaling Line Circuits (SLC).

All of the following devices/appliances shall be individually addressed on the SLC:

Smoke detectors.

Heat detectors.

Manual Pull Stations.

Monitor devices.

Control devices.

Fan Shutdown, Dampers and Smoke Control.

Automatic Door Control.

Wiring.

All wiring shall be run square and plum to building structure. All plenum rated wiring not run in conduit shall utilize a manufactured wiring management system.

Existing raceways may be used in new installation but not existing cables.

Exposed Fire Alarm System wiring shall not be painted over.

All wiring shall be RED in color.

Special Conditions

General.

It is the responsibility of the Contractor to assure that there is no disruption to the county or its workers.

It is the responsibility of the Contractor to maintain a clean worksite free of Debris.

Connecting to or Modifying Existing Systems.

Operating, modifying and connecting to existing fire alarm systems shall be coordinated with Facilities, but performed by the Contractor, before work is to take place.

Existing systems shall remain operational during modifications or additions to the existing system throughout the duration of the project.

Where part or all of the existing fire alarm system is required to be demolished, remove the existing fire alarm components only after the new system installation is complete and accepted by AHJ and Lewis County.

All Existing equipment that is not used shall be removed and devices/ Equipment are to be palletized neatly for County Salvage and delivered to Facilities shop Located at 542 NW Center St. Chehalis, Washington 98532.

Documentation

Warranty and Maintenance.

The contractor shall warranty all materials, installation and workmanship for two years from the date of acceptance. A copy of the manufacturer's warranty shall be provided with closeout documentation and included with the operation and installation manuals.

Materials, installation or workmanship found to be defective during that period shall be replaced without cost to Lewis County. All repairs under warranty must be completed as soon as reasonably possible and shall not exceed one week without mutual agreement.

The Warranty or any part of the warranty shall not be made void by any required operation or inspection of the system after acceptance during the warranty period.

If the Owner experiences more than two Nuisance alarms or unexplained false alarms or trouble alarms in any 24-hour period while the system is under warranty, the Contractor shall provide the necessary labor, materials, and technical expertise to promptly correct the problem(s) at no cost to Lewis County.

The Contractor shall maintain a service organization or vendor with adequate spare parts stock within 75 Miles of the installation.

Spare Parts- Contractor shall supply the following spare parts.

5-Automatic Detection devices.

2-Manual pull stations.

5-Moduals.

5-Audible and visual devices.

3-Sets of keys.

1-Panel Device Module.

Training.

Provide services of manufacturer's representative to instruct Owner's personnel in operation and maintenance of system for a minimum of two 4 hour sessions.

Supervising Station Programming.

Upon completion of the fire alarm system and the final acceptance test, the contractor shall program the new building alarm system into the Lewis County 911 Central Monitoring system. The Programming shall be coordinated and supervised by Lewis County.

A signal verification test shall be conducted to verify communication between the FACU and the Central Monitoring station.

Exhibit B- Compensation

Compensation will be made in the amount of \$_____ plus Washington State Sales Tax upon completion of contract. Progress payments may be made at County's discretion upon County's approval of Contractor's invoices, to the extent that said invoices reflect the completion of project milestones by the Contractor (milestones are points at which significant components of the project have been completed and at which tangible project deliverables of material value have been received by the County).

LEWIS COUNTY
AGREEMENT
GENERAL TERMS AND
CONDITIONS

AGREEMENT

EFFECTIVE DATE: _____

_____, hereinafter called CONTRACTOR, and LEWIS COUNTY, hereinafter called COUNTY, agree as set forth in this Agreement, including: Scope of Work, Specifications, Compensation, Bid Response forms, General and Special Conditions, copies of which are attached hereto and incorporated herein by this reference as fully as if set forth herein.

Project: L&J Fire Alarm Replacement Project Bid Price (with accepted alternates:
\$ _____

The term of this Agreement shall commence upon the date of execution as shown above. This agreement may be renewed or terminated upon written notice provided either by the County or the service provider thirty (30) or more days prior to the effective date of renewal or termination.

CONTRACTOR acknowledges and by signing this contract agrees that the Indemnification provisions set forth in Paragraphs 5, 14, 15, 20, 21, 24 and 25, are totally and fully part of this contract and have been mutually negotiated by the parties.

IN WITNESS WHEREOF, the parties have executed this Agreement this _____ day of _____, 2016.

CONTRACTOR:

LEWIS COUNTY

Title of Signatory
Authorized by the firm By Laws

Steve Wohld
Lewis County, Chief of Internal Services

Mailing Address:

Approved as to Form Only:
Jonathan Meyer, Prosecuting Attorney

By:

Deputy Prosecuting Attorney

UBI or Contractors License#

Federal Business Tax ID No.

GENERAL CONDITIONS

1. Scope of Contractors Services:

The Contractor agrees to provide to the County services and any material set forth in the project narrative identified as Exhibit "A" during the agreement period. No material, labor, or facilities will be furnished by the County, unless otherwise provided for in the Agreement.

2. Accounting and Payment for Contractor Services:

Payment to the Contractor for services rendered under this Agreement shall be as set forth in Exhibit "B". Where Exhibit "B" requires payments by Lewis County, payment shall be based upon billings, supported unless otherwise provided in Exhibit "B", by documentation of units of work actually performed and amounts earned, including where appropriate, the actual number days worked each month, total number of hours for the month, and total dollar payment requested. Unless specifically stated in Exhibit "B" or approved in writing in advance by the official executing this Agreement for Lewis County (hereinafter referred to as the "Contracting Officer"), the County will not reimburse the Contractor for any costs or expenses incurred by the Contractor in the performance of this contract.

Where required, the County shall, upon receipt of appropriate documentation, compensate the Contractor, no more often than weekly; through the County voucher system for the Contractor's service pursuant to the fee schedule set forth in Exhibit "B".

3. Assignment and Subcontracting:

No portion of this contract may be assigned or subcontracted to any other individual, firm or entity without the express and prior written approval of the Contracting Officer or as set forth in Exhibit "A".

4. Labor Standards and Contract Assistance:

The Contractor shall comply with the provisions of the Lewis County Contract and Procurement Assistance Program as applicable, attached hereto as "Special Conditions".

5. Independent Contractor:

The Contractor's services shall be furnished by the Contractor as an independent Contractor and nothing herein contained shall be construed to create a relationship of employer-employee or master-servant, but all payments made hereunder and all services performed shall be made and performed pursuant to this Agreement by the Contractor as an independent Contractor. The Contractor acknowledges that the entire compensation for this Agreement is specified in Exhibit "B" and the Contractor is not entitled to any County benefits including, but not limited to: vacation pay, holiday pay, sick leave pay, medical, dental, or other insurance benefits, or any other rights or privileges afforded to Lewis County employees.

Contractor will defend, indemnify and hold harmless the County, its officers, agents or employees from any loss or expense, including but not limited to settlements, judgments, setoffs, attorneys' fees or costs incurred by reason of claims or demands because of breach of the provisions of this paragraph.

6. No Guarantee of Employment:

The performance of all or part of this contract by the Contractor shall not operate to vest any employment rights whatsoever and shall not be deemed to guarantee any employment of the Contractor or any employee of the Contractor or any subcontractor or any employee of any subcontractor by the County at the present time or in the future.

7. Taxes:

The Contractor understands and acknowledges that the County will not withhold Federal or State income taxes. Where required by State or Federal law, the Contractor authorizes the County to make withholding for any taxes other than income taxes (i.e., Medicare). All compensation received by the Contractor will be reported to the Internal Revenue Service at the end of the calendar year in accordance with the applicable IRS regulations. It is the responsibility of the Contractor to make the necessary estimated tax payments throughout the year, if any, and the Contractor is solely liable for any tax obligation arising from the

Contractor's performance of this Agreement. The Contractor hereby agrees to indemnify the County against any demand to pay taxes arising from the Contractor's failure to pay taxes on compensation earned pursuant to this Agreement.

The County will pay sales and use taxes imposed on goods or services acquired hereunder as required by law. The Contractor must pay all other taxes including, but not limited to: Business and Occupation Tax, taxes based on the Contractor's gross or net income, or personal property to which the County does not hold title. The County is exempt from Federal Excise Tax.

8. **Regulations and Requirement:**

This Agreement shall be subject to all laws, rules, and regulations of the United States of America, the State of Washington, and political subdivisions of the State of Washington, and to any other provisions set forth in Special Conditions.

9. **Prevailing Wages**

Contractor shall pay the prevailing rate of wages to all workers, laborers, or mechanics employed in the performance of any part of the Work in accordance with RCW 39.12 and the rules and regulations of the Department of Labor and Industries. The schedule of prevailing wage rates for the locality or localities of the Work, is determined by the Industrial Statistician of the Department of Labor and Industries. It is the Contractor's responsibility to verify the applicable prevailing wage rate.

Each Application for Payment submitted by Contractor shall state that prevailing wages have been paid in accordance with the pre-filed statement(s) of intent, as approved. Copies of the approved intent statement(s) shall be posted on the job site with the address and telephone number of the Industrial Statistician of the Department of Labor and Industries where a complaint or inquiry concerning prevailing wages may be made.

In compliance with chapter 296-127 WAC, Contractor shall pay to the Department of Labor and Industries the currently established fee(s) for each statement of intent and/or affidavit of wages paid submitted to the Department of Labor and Industries for certification.

10. **Right to Review:**

This contract is subject to review by any Federal or State auditor. The County or its designee shall have the right to review and monitor the financial and service components of this program by whatever means are deemed expedient by the Contracting Officer. Such review may occur with or without notice, and may include, but is not limited to, on-site inspection by County agents or employees, inspection of all records or other materials which the County deems pertinent to the Agreement and its performance, and any and all communications with or evaluations by service recipients under this Agreement. The Contractor shall preserve and maintain all financial records and records relating to the performance of work under this Agreement for 3 years after contract termination, and shall make them available for such review, within Lewis County, State of Washington, upon request.

11. **Modifications:**

Either party may request changes in the Agreement. Any and all agreed modifications shall be in writing, signed by each of the parties.

12. **Termination for Default:**

If the Contractor defaults by failing to perform any of the obligations of the contract or cannot perform because of regulatory order or failure to comply with regulatory requirements, including but not limited to applicable licensing laws, or becomes insolvent or is declared bankrupt or commits any act of bankruptcy- or insolvency or make an assignment for the benefit of creditors, the County may, by depositing written notice to the Contractor in the U.S. mail, postage prepaid, terminate the contract, and at the County's option, obtain performance of the work elsewhere. If the contract is terminated for default, the Contractor shall not be entitled to receive any further payments under the contract until work called for, as may be applicable under Exhibit "A", has been fully performed. Any extra cost or damage to the County resulting from such

default(s) shall be deducted from any money due or coming due to the Contractor. The Contractor shall bear any extra expenses incurred by the County in completing the work, as may be applicable under Exhibit "A", including all increased costs for completing the work, and all damage sustained, or which may be sustained by the County by reason of such default.

If a notice of termination for default has been issued and it is later determined for any reason that the Contractor was not in default, the rights and obligations of the parties shall be the same as if the notice of termination had been issued pursuant to the Termination for Public Convenience paragraph hereof.

13. **Termination for Public Convenience:**

The County may terminate the contract in whole or in part whenever the County determines, in its sole discretion, that such termination is in the interests of the County. Whenever the contract is terminated in accordance with this paragraph, the Contractor shall be entitled to payment for actual work performed at unit contract prices for completed items of work. An equitable adjustment in the contract price for partially completed items of work will be made, but such adjustment shall not include provision for loss of anticipated profit on deleted or uncompleted work. Termination of this contract by the County at any time during the term, whether for default or convenience, shall not constitute a breach of contract by the County.

14. **Insurance Coverage:**

Contractor shall provide the following types and amounts of insurance:

1. **Commercial General Liability Insurance** using Insurance Services Office "Commercial General Liability" policy form CG 00 01, with an edition date prior to 2004, or the exact equivalent. Coverage for an additional insured shall not be limited to its vicarious liability. Defense costs must be paid in addition to limits. Limits shall be no less than \$1,000,000 per occurrence for all covered losses and no less than \$2,000,000 general aggregate.
2. **Workers' Compensation** on a state-approved policy form providing statutory benefits as required by law with employer's liability limits no less than \$1,000,000 per accident for all covered losses.
3. **Business Auto Coverage** on ISO Business Auto Coverage form CA 00 01 including owned, non-owned and hired autos, or the exact equivalent. Limits shall be no less than \$1,000,000 per accident, combined single limit. If Contractor owns no vehicles, this requirement may be satisfied by a non-owned auto endorsement to the general liability policy described above. If Contractor or Contractor's employees will use personal autos in any way on this project, Contractor shall obtain evidence of personal auto liability coverage for each such person.

Excess or Umbrella Liability Insurance (Over Primary) if used to meet limit requirements, shall provide coverage at least as broad as specified for the underlying coverages. Such policy or policies shall include as insureds those covered by the underlying policies, including additional insureds. Coverage shall be "pay on behalf", with defense costs payable in addition to policy limits. There shall be no cross liability exclusion precluding coverage for claims or suits by one insured against another. Coverage shall be applicable to County for injury to employees of Contractor, subcontractors or others involved in the Work. The scope of coverage provided is subject to approval of County following receipt of proof of insurance as required herein.

Policy or policies must list Lewis County as "primary, non-contributory" additionally insured.

15. **Defense & Indemnity Agreement.**

To the fullest extent permitted by law, the Contractor agrees to indemnify, defend and hold the County and its departments, elected and appointed officials, agents, and volunteers, harmless from and against any and all claims, damages, losses and expenses, including but not limited to court costs, attorney's fees and alternative dispute resolution costs, for any personal injury, for any bodily injury, sickness, disease or death and for any damage to or destruction of any property (including the loss of use resulting therefrom) which 1) are caused in whole or in part by any act or omission, negligent or otherwise, of the Contractor, its employees, agents or volunteers, and/or Contractor's subcontractors and their employees, agents or volunteers; or 2) are directly or indirectly arising out of, resulting from or in connection with performance of this Agreement; or 3) are based upon the Contractor's or its subcontractors' use of, presence upon or proximity to the property of the County. This indemnification obligation of the Contractor shall not apply

if the claim, damage, loss or expense is caused by the sole negligence of the County. In the event of the concurrent negligence of the Contractor, its subcontractors, employees or agents, and the County, its employees or agents, this indemnification obligation of the Contractor shall be valid and enforceable only to the extent of the negligence of the Contractor, its subcontractors, employees and agents. This indemnification obligation shall not be limited in any way by the Washington State Industrial Insurance Act, RCW Title 51, or by application of any other workmen's compensation act, disability benefit act or other employee benefit act, and the Contractor hereby expressly waives any immunity afforded by such acts. The foregoing indemnification obligations of the Contractor are a material inducement to County to enter into this Agreement, are reflected in the Contractor's compensation, and have been mutually negotiated by the Parties.

16. **Participation by County – Right to participate; Survival of Contractor's Indemnity Obligations; Indemnity for Subcontractors.**

The County reserves the right, but not the obligation, to participate in the defense of any claim, damages, losses or expenses and any such participation shall not constitute a waiver of Contractor's indemnity obligations under this Agreement.

The Contractor agrees all Contractor's indemnity obligations shall survive the completion, expiration or termination of this Agreement.

In the event the Contractor enters into subcontracts to the extent allowed under this Agreement, the Contractor shall include as a requirement in each such contract that Contractor's subcontractors shall indemnify the County on a basis equal to or exceeding Contractor's indemnity obligations to the County.

17. **Venue and Choice of Law:**

In the event that any litigation should arise concerning the construction or interpretation of any of the terms of this Agreement, the venue of such action of litigation shall be in the courts of the State of Washington in and for the County of Lewis. This Agreement shall be governed by the law of the State of Washington.

18. **Withholding Payment:**

In the event the Contractor has failed to perform any substantial obligation to be performed by the Contractor under this Agreement and said failure has not been cured within the times set forth in this Agreement, then the County may, upon written notice, withhold all monies due and payable to Contractor, without penalty, until such failure to perform is cured or otherwise adjudicated.

19. **Payment and Performance Bond**

Payment and performance bonds for 100% of the Contract Sum, including all Change Orders and state sales tax, shall be furnished for the Work, and shall be in a form acceptable to the Owner. No payment or performance bond is required if the Contract Sum is \$35,000 or less and Contractor agrees that Owner may, in lieu of the bond, retain 50% of the Contract Sum for the period allowed by RCW 39.08.010.

20. **Future Non-Allocation of Funds:**

If sufficient funds are not appropriated or allocated for payment under this contract for any future fiscal period, the County will not be obligated to make payments for services or amounts incurred after the end of the current fiscal period. No penalty or expense shall accrue to the County in the event this provision applies.

21. **Contractor Commitments, Warranties and Representations:**

Any written commitment received from the Contractor concerning this Agreement shall be binding upon the Contractor, unless otherwise specifically provided herein with reference to this paragraph. Failure of the Contractor to fulfill such a commitment shall render the Contractor liable for damages to the County. A commitment includes, but is not limited to any representation made prior to execution of this Agreement, whether or not incorporated elsewhere herein by reference, as to performance of services or equipment, p6ces or options for future acquisition to remain in effect for a fixed period, or warranties.

22. **Patent/Copyright Infringement:**

Contractor will defend and indemnify the County from any claimed action, cause or demand brought against the County, to the extent such action is based on the claim that information supplied by the Contractor infringes any patent or copyright. The Contractor will pay those costs and damages attributable to any such claims that are finally awarded against the County in any action. Such defense and payments are conditioned upon the following:

- a. That Contractor shall be notified promptly in writing by County of any notice of such claim.
- b. Contractor shall have the right, hereunder, at its option and expense, to obtain for the County the right to continue using the information in the event such claim of infringement is made, provided no reduction in performance or loss results to the County.

23. **Disputes:**

A. General

Differences between the Contractor and the County, arising under and by virtue of the Contract Documents shall be brought to the attention of the County at the earliest possible time in order that such matters may be settled or other appropriate action promptly taken. Except for such objections as are made of record in the manner hereinafter specified and within the time limits stated, the records, orders, rulings, instructions, and decisions of the Contracting Officer, shall be final and conclusive.

B. Notice of Potential Claims

The Contractor shall not be entitled to additional compensation which otherwise may be payable, or to extension of time for (1) any act or failure to act by the Contracting Officer or the County, or (2) the happening of any event or occurrence, unless the Contractor has given the County a written Notice of Potential Claim within 10 days of the commencement of the act, failure, or event giving rise to the claim, and before final payment by the County. The written Notice of Potential Claim shall set forth the reasons for which the Contractor believes additional compensation or extension of time is due, the nature of the cost involved, and insofar as possible, the amount of the potential claim. Contractor shall keep full and complete daily records of the Work performed, Labor and material used, and all costs and additional time claimed to be additional.

C. Detailed Claim

The Contractor is not entitled to claim any such additional compensation, or extension of time, unless within 30 days of the accomplishment of the portion of the work from which the claim arose, and before final payment by the County, the Contractor has given the County a detailed written statement of each element of cost or other compensation requested and of all elements of additional time required, and copies of any supporting documents evidencing the amount or the extension of time claimed to be due.

24. **Ownership of Items Produced:**

All writings, programs, data, public records or other materials prepared by the Contractor and/or its consultants or subcontractors, in connection with the performance of this Agreement shall be the sole and absolute property of the County.

25. **Confidentiality:**

In the event that the Contractor comes in contact with or obtains knowledge of confidential information, the Contractor shall maintain the confidentiality of all obtained information provided by the County or acquired by the Contractor in performance of this Agreement, except upon the prior written consent of the Lewis County Prosecuting Attorney or an order entered by a court after having acquired jurisdiction over the County. Contractor shall immediately give to the County notice of any judicial proceeding seeking disclosure of such information. Contractor shall indemnify and hold harmless the County, its officials, agents or

employees from all loss or expense, including, but not limited to settlements, judgments, setoffs, attorneys' fees and costs resulting from Contractor's breach of this provision.

26. **Notice:**

Except as set forth elsewhere in the Agreement, for all purposes under this Agreement, except service of process, notice shall be given by the Contractor to the Director of Central Services for whom services are rendered, to wit: Steve Wohld, Chief of Internal Services, 351 NW North Street, Chehalis, Washington 98532-1900. Notice to the Contractor for all purposes under this Agreement shall be given to the address reflected above. Notice may be given by delivery or by depositing in the US Mail, first class, postage prepaid.

27. **Severability:**

If any term or condition of this contract or the application thereof to any person(s) or circumstances is held invalid, such invalidity shall not affect other terms, conditions or applications which can be given effect without the invalid term, condition or application. To this end, the terms and conditions of this contract are declared severable.

28. **Waiver:**

Waiver of any breach or condition of this contract shall not be deemed a waiver of any prior or subsequent breach. No term or condition of this contract shall be held to be waived, modified or deleted except by an instrument, in writing, signed by the parties hereto.

29. **Survival:**

The provisions of paragraphs 5, 7, 9, 11, 12, 13, 14, 15, 17, 18, 19, 20, 21, 22, 24 and 25, and the provisions of any non-collusion affidavit, shall survive, notwithstanding the termination or invalidity of this Agreement for any reason.

30. **Entire Agreement:**

This written contract represents the entire Agreement between the parties and supersedes any prior oral statements, discussions or understandings between the parties.

SPECIAL CONDITIONS

A. Definitions

The COUNTY is the recipient of CONTRACTOR'S services, and at all times acts through its Board of County Commissioners. The Contracting Officer of the COUNTY will be Chief of Internal Services or his designee.

Contractor Registration

The CONTRACTOR agrees and covenants to furnish unto the COUNTY proper evidence that the CONTRACTOR has fully complied with the State Licensing Law.

CONTRACTOR shall include his contractor's license number in the space provided on the front page of this Agreement.

C. Non-Discrimination (Lewis County Funds)

The CONTRACTOR should be aware that public funds are being used to assist in this project. During the performance of this contract, the CONTRACTOR agrees as follows:

1. The CONTRACTOR will not discriminate against any employee or applicant for employment because of race, creed, color, or national origin. Such action shall include, but not be limited to, the following: employment, upgrading, demotion or transfer; recruitment or recruitment advertising; layoff or termination; rates of pay or other forms of compensation; and selection for training, including apprenticeship. The CONTRACTOR agrees to post in conspicuous places, available to employees and applicants for employment, notices to be provided by the contracting officer setting forth the provisions of this non-discrimination clause.
2. The CONTRACTOR will, in all solicitations or advertisements for employees placed by or on behalf of the CONTRACTOR, state that all qualified applicants will receive consideration for employment without regard to race, creed, color, or national origin.
3. The CONTRACTOR will send to each labor union or representative of workers with which he has a collective bargaining agreement or other contract or understanding, notice to be provided by the agency contracting officer, advising the labor union or worker's representative of the contractor's commitments under Section 202 or Executive Order No. 11246 of September 24, 1965, and shall post copies of the notice in a conspicuous place available to employees and applicants for employment.
4. The CONTRACTOR will comply with all provisions of Executive Order No. 11246 of September 24, 1965, and of the rules, regulations and relevant orders of the Secretary of Labor.
5. The CONTRACTOR will furnish all information and reports required by Executive Order No. 11246 of September 24, 1965, and by the rules, regulations, and orders of the Secretary of Labor, or pursuant thereto, and will permit access to his books and records for purposes of investigation to ascertain compliance with such rules, regulations and orders.
6. In the event of the CONTRACTOR'S non-compliance with the non-discrimination clauses of this contract or with any such rules, regulations, or orders, this contract may be canceled, terminated or suspended in whole or in part and the contract may be declared ineligible for further government contracts in accordance with procedures authorized in Executive Order No. 11246 of September 24, 1965, and such other sanctions may be imposed and remedies invoked as provided in Executive Order No. 11246 of September 24, 1965, or by rule, regulation or order of the Secretary of Labor, or as otherwise provided by law.
7. The CONTRACTOR will include the provisions of Paragraphs (1) through (7) in every sub-contract or purchase order unless exempted by rules, regulations or orders of the Secretary of Labor issued pursuant to

Section 204 of Executive Order No. 11246 of September 24, 1965, so that such provisions will be binding upon each sub-contract or vendor. The CONTRACTOR will take such action with respect to any sub-contract or purchase order as the contracting agency may direct as a means of enforcing such provisions, including sanctions for non-compliance: Provided, however, that in the event the CONTRACTOR becomes involved in, or is threatened with litigation with a sub-contractor or vendor as a result of such direction by the contracting agency, the CONTRACTOR may request the United States to enter into such litigation to protect the interest of the United States.

D. Original Specifications

It is hereby expressly agreed by and between the parties involved that in any matter, dispute, suit, or proceedings arising or in any way growing out of this contract in which it may be necessary to introduce into evidence the original of such specifications, that a printed copy thereof may be used in lieu thereof with like force and effect as though the original was produced.

E. Eight Hour Law and Payment for Labor

The CONTRACTOR agrees to comply with RCW chapter 49.28 providing that no laborer, workman or mechanic in the employ of the CONTRACTOR, sub-contractor, or other person doing or contracting to do the whole or any part of the work contemplated by this contract, shall be permitted or required to work more than eight (8) hours in any one calendar day, provided that, in cases of extraordinary emergency, such danger to life or property, the hours of work may be extended, but in such cases the rate of pay for time employed in excess of eight (8) hours of each calendar day shall not be less than one and one-half times the rate allowed for this same amount of time during eight (8) hours' service. Any work necessary to be performed after regular working hours, or Sunday or legal holidays shall be performed without additional expense to the COUNTY.

Notwithstanding the above provisions, a CONTRACTOR may enter into an agreement approved by the employees in which the employees may work up to ten (10) hours in a calendar day for not more than four (4) calendar days in a week.

CONTRACTOR further agrees that said contract is terminable in case the CONTRACTOR violates the provisions of such act.

The CONTRACTOR, and sub-contractors shall further verify that:

1. Contractor had not employed or retained any company or person (other than a full time bona fide employee working solely for the offeror) to solicit or receive this contract; and
2. Contractor has not paid or agreed to pay any company or person (other than a full-time bona fide employee working solely for the offeror) any fee, commission, percentage, or brokerage fee contingent upon or resulting from the award of this contract; and
3. Contractor has not been asked or otherwise coerced, whether expressed or implied, into contributing funds, for any purpose as a condition to doing business with the COUNTY.

It is further agreed that in case any dispute arises as to what are the prevailing wages for the work of a similar nature and such dispute cannot be adjusted by the parties involved, the matter shall be referred for arbitration to the Director of the Department of Labor & Industries of the State and his decision therein shall be final, binding, and conclusive on all parties.

- F. To the extent applicable, the parties agree that this agreement and CONTRACTOR'S work does not create or imply a license agreement for the use of software, code, or a computer program. CONTRACTOR agrees that COUNTY shall have the sole and exclusive ownership of all rights, title, and interest in all software, written code, computer programs created or written by CONTRACTOR and that COUNTY has the right of unlimited use of the software, code and programs, including reproduction, modification and sale.

CONTRACTOR denies any proprietary rights, including copyrights, trademarks, trade secrets, or intellectual property rights, to any software, code or program.

- G. To the extent applicable, Contractor warrants that the computer code, software, or computer program installed by CONTRACTOR is not patented or copyrighted. CONTRACTOR will defend and indemnify the COUNTY from any claim, cause or demand brought against the COUNTY based upon copyright or patent of the software, computer code, or computer program installed by CONTRACTOR.

5.

Notice

Prevailing Wage Requirement

This project has been determined to be "Public Works" as defined by RCW 39.04 and WAC 296-127 and is subject to Washington State Prevailing Wage Laws. Current Prevailing Wage Rates for work performed in Lewis County are attached. These rates may not apply to work performed outside Lewis County.

In addition, successful Contractor may be required to produce Certified Payroll Records upon request.

State of Washington
Department of Labor & Industries
Prevailing Wage Section - Telephone 360-902-5335
PO Box 44540, Olympia, WA 98504-4540

Washington State Prevailing Wage

The PREVAILING WAGES listed here include both the hourly wage rate and the hourly rate of fringe benefits. On public works projects, worker's wage and benefit rates must add to not less than this total. A brief description of overtime calculation requirements are provided on the Benefit Code Key.

Journey Level Prevailing Wage Rates for the Effective Date: 12/28/2020

| | <u>Trade</u> | <u>Job Classification</u> | <u>Wage</u> | <u>Holiday</u> | <u>Overtime</u> | <u>Note</u> | <u>*Risk Class</u> |
|-------|--|---------------------------------------|-------------|----------------|-----------------|-------------|----------------------|
| Lewis | Asbestos Abatement Workers | Journey Level | \$52.39 | <u>5D</u> | <u>1H</u> | | View |
| Lewis | Boilermakers | Journey Level | \$69.29 | <u>5N</u> | <u>1C</u> | | View |
| Lewis | Brick Mason | Journey Level | \$60.57 | <u>7E</u> | <u>1N</u> | | View |
| Lewis | Brick Mason | Pointer-Caulker-Cleaner | \$60.57 | <u>7E</u> | <u>1N</u> | | View |
| Lewis | Building Service Employees | Janitor | \$13.50 | | <u>1</u> | | View |
| Lewis | Building Service Employees | Shampooer | \$13.50 | | <u>1</u> | | View |
| Lewis | Building Service Employees | Waxer | \$13.50 | | <u>1</u> | | View |
| Lewis | Building Service Employees | Window Cleaner | \$13.50 | | <u>1</u> | | View |
| Lewis | Cabinet Makers (In Shop) | Journey Level | \$23.17 | | <u>1</u> | | View |
| Lewis | Carpenters | Acoustical Worker | \$64.94 | <u>7A</u> | <u>4C</u> | | View |
| Lewis | Carpenters | Carpenter | \$64.94 | <u>7A</u> | <u>4C</u> | | View |
| Lewis | Carpenters | Carpenters on Stationary Tools | \$65.07 | <u>7A</u> | <u>4C</u> | | View |
| Lewis | Carpenters | Creosoted Material | \$65.07 | <u>7A</u> | <u>4C</u> | | View |
| Lewis | Carpenters | Floor Finisher | \$64.94 | <u>7A</u> | <u>4C</u> | | View |
| Lewis | Carpenters | Floor Layer | \$64.94 | <u>7A</u> | <u>4C</u> | | View |
| Lewis | Carpenters | Scaffold Erector | \$64.94 | <u>7A</u> | <u>4C</u> | | View |
| Lewis | Cement Masons | Application of all Composition Mastic | \$64.84 | <u>7A</u> | <u>4U</u> | | View |
| Lewis | Cement Masons | Application of all Epoxy Material | \$64.34 | <u>7A</u> | <u>4U</u> | | View |
| Lewis | Cement Masons | Application of all Plastic Material | \$64.84 | <u>7A</u> | <u>4U</u> | | View |
| Lewis | Cement Masons | Application of Sealing Compound | \$64.34 | <u>7A</u> | <u>4U</u> | | View |
| Lewis | Cement Masons | Application of Underlayment | \$64.84 | <u>7A</u> | <u>4U</u> | | View |
| Lewis | Cement Masons | Building General | \$64.34 | <u>7A</u> | <u>4U</u> | | View |
| Lewis | Cement Masons | Composition or Kalman Floors | \$64.84 | <u>7A</u> | <u>4U</u> | | View |
| Lewis | Cement Masons | Concrete Paving | \$64.34 | <u>7A</u> | <u>4U</u> | | View |

| | | | | | | | |
|-------|--------------------------------------|---|----------|--------------------|--------------------|--------------------|----------------------|
| Lewis | Cement Masons | Curb & Gutter Machine | \$64.84 | 7A | 4U | | View |
| Lewis | Cement Masons | Curb & Gutter, Sidewalks | \$64.34 | 7A | 4U | | View |
| Lewis | Cement Masons | Curing Concrete | \$64.34 | 7A | 4U | | View |
| Lewis | Cement Masons | Finish Colored Concrete | \$64.84 | 7A | 4U | | View |
| Lewis | Cement Masons | Floor Grinding | \$64.84 | 7A | 4U | | View |
| Lewis | Cement Masons | Floor Grinding/Polisher | \$64.34 | 7A | 4U | | View |
| Lewis | Cement Masons | Green Concrete Saw, self-powered | \$64.84 | 7A | 4U | | View |
| Lewis | Cement Masons | Grouting of all Plates | \$64.34 | 7A | 4U | | View |
| Lewis | Cement Masons | Grouting of all Tilt-up Panels | \$64.34 | 7A | 4U | | View |
| Lewis | Cement Masons | Guniting Nozzleman | \$64.84 | 7A | 4U | | View |
| Lewis | Cement Masons | Hand Powered Grinder | \$64.84 | 7A | 4U | | View |
| Lewis | Cement Masons | Journey Level | \$64.34 | 7A | 4U | | View |
| Lewis | Cement Masons | Patching Concrete | \$64.34 | 7A | 4U | | View |
| Lewis | Cement Masons | Pneumatic Power Tools | \$64.84 | 7A | 4U | | View |
| Lewis | Cement Masons | Power Chipping & Brushing | \$64.84 | 7A | 4U | | View |
| Lewis | Cement Masons | Sand Blasting Architectural Finish | \$64.84 | 7A | 4U | | View |
| Lewis | Cement Masons | Screed & Rodding Machine | \$64.84 | 7A | 4U | | View |
| Lewis | Cement Masons | Spackling or Skim Coat Concrete | \$64.34 | 7A | 4U | | View |
| Lewis | Cement Masons | Troweling Machine Operator | \$64.84 | 7A | 4U | | View |
| Lewis | Cement Masons | Troweling Machine Operator on Colored Slabs | \$64.84 | 7A | 4U | | View |
| Lewis | Cement Masons | Tunnel Workers | \$64.84 | 7A | 4U | | View |
| Lewis | Divers & Tenders | Bell/Vehicle or Submersible Operator (Not Under Pressure) | \$118.80 | 7A | 4C | | View |
| Lewis | Divers & Tenders | Dive Supervisor/Master | \$81.98 | 7A | 4C | | View |
| Lewis | Divers & Tenders | Diver | \$118.80 | 7A | 4C | 8V | View |
| Lewis | Divers & Tenders | Diver On Standby | \$76.98 | 7A | 4C | | View |
| Lewis | Divers & Tenders | Diver Tender | \$69.91 | 7A | 4C | | View |
| Lewis | Divers & Tenders | Manifold Operator | \$69.91 | 7A | 4C | | View |
| Lewis | Divers & Tenders | Manifold Operator Mixed Gas | \$74.91 | 7A | 4C | | View |
| Lewis | Divers & Tenders | Remote Operated Vehicle Operator/Technician | \$69.91 | 7A | 4C | | View |
| Lewis | Divers & Tenders | Remote Operated Vehicle Tender | \$65.19 | 7A | 4C | | View |
| Lewis | Dredge Workers | Assistant Engineer | \$70.62 | 5D | 3F | | View |
| Lewis | Dredge Workers | Assistant Mate (Deckhand) | \$70.07 | 5D | 3F | | View |
| Lewis | Dredge Workers | Boatmen | \$70.62 | 5D | 3F | | View |
| Lewis | Dredge Workers | Engineer Welder | \$71.97 | 5D | 3F | | View |
| Lewis | Dredge Workers | Leverman, Hydraulic | \$73.41 | 5D | 3F | | View |
| Lewis | Dredge Workers | Mates | \$70.62 | 5D | 3F | | View |
| Lewis | Dredge Workers | Oiler | \$70.07 | 5D | 3F | | View |
| Lewis | Drywall Applicator | Journey Level | \$64.94 | 5D | 1H | | View |

| | | | | | | | |
|-------|--|--------------------------------------|----------|--------------------|--------------------|--------------------|----------------------|
| Lewis | Drywall Tapers | Journey Level | \$65.31 | 5P | 1E | | View |
| Lewis | Electrical Fixture Maintenance Workers | Journey Level | \$13.50 | | 1 | | View |
| Lewis | Electricians - Inside | Cable Splicer | \$77.53 | 5C | 1G | | View |
| Lewis | Electricians - Inside | Journey Level | \$72.56 | 5C | 1G | | View |
| Lewis | Electricians - Inside | Lead Covered Cable Splicer | \$82.51 | 5C | 1G | | View |
| Lewis | Electricians - Inside | Welder | \$77.53 | 5C | 1G | | View |
| Lewis | Electricians - Motor Shop | Craftsman | \$15.37 | | 1 | | View |
| Lewis | Electricians - Motor Shop | Journey Level | \$14.69 | | 1 | | View |
| Lewis | Electricians - Powerline Construction | Cable Splicer | \$82.39 | 5A | 4D | | View |
| Lewis | Electricians - Powerline Construction | Certified Line Welder | \$75.64 | 5A | 4D | | View |
| Lewis | Electricians - Powerline Construction | Groundperson | \$49.17 | 5A | 4D | | View |
| Lewis | Electricians - Powerline Construction | Heavy Line Equipment Operator | \$75.64 | 5A | 4D | | View |
| Lewis | Electricians - Powerline Construction | Journey Level Lineperson | \$75.64 | 5A | 4D | | View |
| Lewis | Electricians - Powerline Construction | Line Equipment Operator | \$64.54 | 5A | 4D | | View |
| Lewis | Electricians - Powerline Construction | Meter Installer | \$49.17 | 5A | 4D | 8W | View |
| Lewis | Electricians - Powerline Construction | Pole Sprayer | \$75.64 | 5A | 4D | | View |
| Lewis | Electricians - Powerline Construction | Powderperson | \$56.49 | 5A | 4D | | View |
| Lewis | Electronic Technicians | Journey Level | \$46.47 | 6Z | 1B | | View |
| Lewis | Elevator Constructors | Mechanic | \$97.31 | 7D | 4A | | View |
| Lewis | Elevator Constructors | Mechanic In Charge | \$105.06 | 7D | 4A | | View |
| Lewis | Fabricated Precast Concrete Products | Journey Level | \$13.50 | | 1 | | View |
| Lewis | Fabricated Precast Concrete Products | Journey Level - In-Factory Work Only | \$13.50 | | 1 | | View |
| Lewis | Fence Erectors | Fence Erector | \$44.40 | 7A | 4V | 8Y | View |
| Lewis | Fence Erectors | Fence Laborer | \$44.40 | 7A | 4V | 8Y | View |
| Lewis | Flaggers | Journey Level | \$44.40 | 7A | 4V | 8Y | View |
| Lewis | Glaziers | Journey Level | \$69.26 | 7L | 1Y | | View |
| Lewis | Heat & Frost Insulators And Asbestos Workers | Journeyman | \$79.43 | 5J | 4H | | View |
| Lewis | Heating Equipment Mechanics | Journey Level | \$89.61 | 7F | 1E | | View |
| Lewis | Hod Carriers & Mason Tenders | Journey Level | \$54.01 | 7A | 4V | 8Y | View |
| Lewis | Industrial Power Vacuum Cleaner | Journey Level | \$13.50 | | 1 | | View |
| Lewis | Inland Boatmen | Boat Operator | \$61.41 | 5B | 1K | | View |
| Lewis | Inland Boatmen | Cook | \$56.48 | 5B | 1K | | View |
| Lewis | Inland Boatmen | Deckhand | \$57.48 | 5B | 1K | | View |

| | | | | | | | |
|-------|--|---------------------------------------|---------|--------------------|--------------------|--------------------|----------------------|
| Lewis | Inland Boatmen | Deckhand Engineer | \$58.81 | 5B | 1K | | View |
| Lewis | Inland Boatmen | Launch Operator | \$58.89 | 5B | 1K | | View |
| Lewis | Inland Boatmen | Mate | \$57.31 | 5B | 1K | | View |
| Lewis | Inspection/Cleaning/Sealing Of Sewer & Water Systems By Remote Control | Cleaner Operator, Foamer Operator | \$13.50 | | 1 | | View |
| Lewis | Inspection/Cleaning/Sealing Of Sewer & Water Systems By Remote Control | Grout Truck Operator | \$13.50 | | 1 | | View |
| Lewis | Inspection/Cleaning/Sealing Of Sewer & Water Systems By Remote Control | Head Operator | \$13.50 | | 1 | | View |
| Lewis | Inspection/Cleaning/Sealing Of Sewer & Water Systems By Remote Control | Technician | \$13.50 | | 1 | | View |
| Lewis | Inspection/Cleaning/Sealing Of Sewer & Water Systems By Remote Control | Tv Truck Operator | \$13.50 | | 1 | | View |
| Lewis | Insulation Applicators | Journey Level | \$64.94 | 7A | 4C | | View |
| Lewis | Ironworkers | Journeyman | \$75.23 | 7N | 1O | | View |
| Lewis | Laborers | Air, Gas Or Electric Vibrating Screed | \$52.39 | 7A | 4V | 8Y | View |
| Lewis | Laborers | Airtrac Drill Operator | \$54.01 | 7A | 4V | 8Y | View |
| Lewis | Laborers | Ballast Regular Machine | \$52.39 | 7A | 4V | 8Y | View |
| Lewis | Laborers | Batch Weighman | \$44.40 | 7A | 4V | 8Y | View |
| Lewis | Laborers | Brick Pavers | \$52.39 | 7A | 4V | 8Y | View |
| Lewis | Laborers | Brush Cutter | \$52.39 | 7A | 4V | 8Y | View |
| Lewis | Laborers | Brush Hog Feeder | \$52.39 | 7A | 4V | 8Y | View |
| Lewis | Laborers | Burner | \$52.39 | 7A | 4V | 8Y | View |
| Lewis | Laborers | Caisson Worker | \$54.01 | 7A | 4V | 8Y | View |
| Lewis | Laborers | Carpenter Tender | \$52.39 | 7A | 4V | 8Y | View |
| Lewis | Laborers | Cement Dumper-paving | \$53.35 | 7A | 4V | 8Y | View |
| Lewis | Laborers | Cement Finisher Tender | \$52.39 | 7A | 4V | 8Y | View |
| Lewis | Laborers | Change House Or Dry Shack | \$52.39 | 7A | 4V | 8Y | View |
| Lewis | Laborers | Chipping Gun (30 Lbs. And Over) | \$53.35 | 7A | 4V | 8Y | View |
| Lewis | Laborers | Chipping Gun (Under 30 Lbs.) | \$52.39 | 7A | 4V | 8Y | View |
| Lewis | Laborers | Choker Setter | \$52.39 | 7A | 4V | 8Y | View |
| Lewis | Laborers | Chuck Tender | \$52.39 | 7A | 4V | 8Y | View |
| Lewis | Laborers | Clary Power Spreader | \$53.35 | 7A | 4V | 8Y | View |
| Lewis | Laborers | Clean-up Laborer | \$52.39 | 7A | 4V | 8Y | View |
| Lewis | Laborers | Concrete Dumper/Chute Operator | \$53.35 | 7A | 4V | 8Y | View |
| Lewis | Laborers | Concrete Form Stripper | \$52.39 | 7A | 4V | 8Y | View |
| Lewis | Laborers | Concrete Placement Crew | \$53.35 | 7A | 4V | 8Y | View |
| Lewis | Laborers | Concrete Saw Operator/Core Driller | \$53.35 | 7A | 4V | 8Y | View |
| Lewis | Laborers | Crusher Feeder | \$44.40 | 7A | 4V | 8Y | View |

| | | | | | | | |
|-------|--------------------------|---|---------|--------------------|--------------------|--------------------|----------------------|
| Lewis | Laborers | Curing Laborer | \$52.39 | 7A | 4V | 8Y | View |
| Lewis | Laborers | Demolition: Wrecking & Moving (Incl. Charred Material) | \$52.39 | 7A | 4V | 8Y | View |
| Lewis | Laborers | Ditch Digger | \$52.39 | 7A | 4V | 8Y | View |
| Lewis | Laborers | Diver | \$54.01 | 7A | 4V | 8Y | View |
| Lewis | Laborers | Drill Operator (Hydraulic, Diamond) | \$53.35 | 7A | 4V | 8Y | View |
| Lewis | Laborers | Dry Stack Walls | \$52.39 | 7A | 4V | 8Y | View |
| Lewis | Laborers | Dump Person | \$52.39 | 7A | 4V | 8Y | View |
| Lewis | Laborers | Epoxy Technician | \$52.39 | 7A | 4V | 8Y | View |
| Lewis | Laborers | Erosion Control Worker | \$52.39 | 7A | 4V | 8Y | View |
| Lewis | Laborers | Faller & Bucker Chain Saw | \$53.35 | 7A | 4V | 8Y | View |
| Lewis | Laborers | Fine Graders | \$52.39 | 7A | 4V | 8Y | View |
| Lewis | Laborers | Firewatch | \$44.40 | 7A | 4V | 8Y | View |
| Lewis | Laborers | Form Setter | \$52.39 | 7A | 4V | 8Y | View |
| Lewis | Laborers | Gabian Basket Builders | \$52.39 | 7A | 4V | 8Y | View |
| Lewis | Laborers | General Laborer | \$52.39 | 7A | 4V | 8Y | View |
| Lewis | Laborers | Grade Checker & Transit Person | \$54.01 | 7A | 4V | 8Y | View |
| Lewis | Laborers | Grinders | \$52.39 | 7A | 4V | 8Y | View |
| Lewis | Laborers | Grout Machine Tender | \$52.39 | 7A | 4V | 8Y | View |
| Lewis | Laborers | Groutmen (Pressure) Including Post Tension Beams | \$53.35 | 7A | 4V | 8Y | View |
| Lewis | Laborers | Guardrail Erector | \$52.39 | 7A | 4V | 8Y | View |
| Lewis | Laborers | Hazardous Waste Worker (Level A) | \$54.01 | 7A | 4V | 8Y | View |
| Lewis | Laborers | Hazardous Waste Worker (Level B) | \$53.35 | 7A | 4V | 8Y | View |
| Lewis | Laborers | Hazardous Waste Worker (Level C) | \$52.39 | 7A | 4V | 8Y | View |
| Lewis | Laborers | High Scaler | \$54.01 | 7A | 4V | 8Y | View |
| Lewis | Laborers | Jackhammer | \$53.35 | 7A | 4V | 8Y | View |
| Lewis | Laborers | Laserbeam Operator | \$53.35 | 7A | 4V | 8Y | View |
| Lewis | Laborers | Maintenance Person | \$52.39 | 7A | 4V | 8Y | View |
| Lewis | Laborers | Manhole Builder-Mudman | \$53.35 | 7A | 4V | 8Y | View |
| Lewis | Laborers | Material Yard Person | \$52.39 | 7A | 4V | 8Y | View |
| Lewis | Laborers | Motorman-Dinky Locomotive | \$53.35 | 7A | 4V | 8Y | View |
| Lewis | Laborers | Nozzleman (Concrete Pump, Green Cutter When Using Combination Of High Pressure Air & Water On Concrete & Rock, Sandblast, Gunite, Shotcrete, Water Blaster, Vacuum Blaster) | \$53.35 | 7A | 4V | 8Y | View |
| Lewis | Laborers | Pavement Breaker | \$53.35 | 7A | 4V | 8Y | View |
| Lewis | Laborers | Pilot Car | \$44.40 | 7A | 4V | 8Y | View |
| Lewis | Laborers | Pipe Layer Lead | \$54.01 | 7A | 4V | 8Y | View |

| | | | | | | | |
|-------|--------------------------|---|----------|--------------------|--------------------|--------------------|----------------------|
| Lewis | Laborers | Pipe Layer/Tailor | \$53.35 | 7A | 4V | 8Y | View |
| Lewis | Laborers | Pipe Pot Tender | \$53.35 | 7A | 4V | 8Y | View |
| Lewis | Laborers | Pipe Reliner | \$53.35 | 7A | 4V | 8Y | View |
| Lewis | Laborers | Pipe Wrapper | \$53.35 | 7A | 4V | 8Y | View |
| Lewis | Laborers | Pot Tender | \$52.39 | 7A | 4V | 8Y | View |
| Lewis | Laborers | Powderman | \$54.01 | 7A | 4V | 8Y | View |
| Lewis | Laborers | Powderman's Helper | \$52.39 | 7A | 4V | 8Y | View |
| Lewis | Laborers | Power Jacks | \$53.35 | 7A | 4V | 8Y | View |
| Lewis | Laborers | Railroad Spike Puller - Power | \$53.35 | 7A | 4V | 8Y | View |
| Lewis | Laborers | Raker - Asphalt | \$54.01 | 7A | 4V | 8Y | View |
| Lewis | Laborers | Re-timberman | \$54.01 | 7A | 4V | 8Y | View |
| Lewis | Laborers | Remote Equipment Operator | \$53.35 | 7A | 4V | 8Y | View |
| Lewis | Laborers | Rigger/Signal Person | \$53.35 | 7A | 4V | 8Y | View |
| Lewis | Laborers | Rip Rap Person | \$52.39 | 7A | 4V | 8Y | View |
| Lewis | Laborers | Rivet Buster | \$53.35 | 7A | 4V | 8Y | View |
| Lewis | Laborers | Rodder | \$53.35 | 7A | 4V | 8Y | View |
| Lewis | Laborers | Scaffold Erector | \$52.39 | 7A | 4V | 8Y | View |
| Lewis | Laborers | Scale Person | \$52.39 | 7A | 4V | 8Y | View |
| Lewis | Laborers | Sloper (Over 20") | \$53.35 | 7A | 4V | 8Y | View |
| Lewis | Laborers | Sloper Sprayer | \$52.39 | 7A | 4V | 8Y | View |
| Lewis | Laborers | Spreader (Concrete) | \$53.35 | 7A | 4V | 8Y | View |
| Lewis | Laborers | Stake Hopper | \$52.39 | 7A | 4V | 8Y | View |
| Lewis | Laborers | Stock Piler | \$52.39 | 7A | 4V | 8Y | View |
| Lewis | Laborers | Swinging Stage/Boatswain Chair | \$44.40 | 7A | 4V | 8Y | View |
| Lewis | Laborers | Tamper & Similar Electric, Air & Gas Operated Tools | \$53.35 | 7A | 4V | 8Y | View |
| Lewis | Laborers | Tamper (Multiple & Self-propelled) | \$53.35 | 7A | 4V | 8Y | View |
| Lewis | Laborers | Timber Person - Sewer (Lagger, Shorer & Cribber) | \$53.35 | 7A | 4V | 8Y | View |
| Lewis | Laborers | Toolroom Person (at Jobsite) | \$52.39 | 7A | 4V | 8Y | View |
| Lewis | Laborers | Topper | \$52.39 | 7A | 4V | 8Y | View |
| Lewis | Laborers | Track Laborer | \$52.39 | 7A | 4V | 8Y | View |
| Lewis | Laborers | Track Liner (Power) | \$53.35 | 7A | 4V | 8Y | View |
| Lewis | Laborers | Traffic Control Laborer | \$47.48 | 7A | 4V | 9C | View |
| Lewis | Laborers | Traffic Control Supervisor | \$50.31 | 7A | 4V | 9C | View |
| Lewis | Laborers | Truck Spotter | \$52.39 | 7A | 4V | 8Y | View |
| Lewis | Laborers | Tugger Operator | \$53.35 | 7A | 4V | 8Y | View |
| Lewis | Laborers | Tunnel Work-Compressed Air Worker 0-30 psi | \$129.67 | 7A | 4V | 9B | View |
| Lewis | Laborers | Tunnel Work-Compressed Air Worker 30.01-44.00 psi | \$134.70 | 7A | 4V | 9B | View |
| Lewis | Laborers | Tunnel Work-Compressed Air Worker 44.01-54.00 psi | \$138.38 | 7A | 4V | 9B | View |

| | | | | | | | |
|-------|--|---|----------|--------------------|--------------------|--------------------|----------------------|
| Lewis | Laborers | Tunnel Work-Compressed Air Worker 54.01-60.00 psi | \$144.08 | 7A | 4V | 9B | View |
| Lewis | Laborers | Tunnel Work-Compressed Air Worker 60.01-64.00 psi | \$146.20 | 7A | 4V | 9B | View |
| Lewis | Laborers | Tunnel Work-Compressed Air Worker 64.01-68.00 psi | \$151.30 | 7A | 4V | 9B | View |
| Lewis | Laborers | Tunnel Work-Compressed Air Worker 68.01-70.00 psi | \$153.20 | 7A | 4V | 9B | View |
| Lewis | Laborers | Tunnel Work-Compressed Air Worker 70.01-72.00 psi | \$155.20 | 7A | 4V | 9B | View |
| Lewis | Laborers | Tunnel Work-Compressed Air Worker 72.01-74.00 psi | \$157.20 | 7A | 4V | 9B | View |
| Lewis | Laborers | Tunnel Work-Guage and Lock Tender | \$54.11 | 7A | 4V | 8Y | View |
| Lewis | Laborers | Tunnel Work-Miner | \$54.11 | 7A | 4V | 8Y | View |
| Lewis | Laborers | Vibrator | \$53.35 | 7A | 4V | 8Y | View |
| Lewis | Laborers | Vinyl Seamer | \$52.39 | 7A | 4V | 8Y | View |
| Lewis | Laborers | Watchman | \$40.36 | 7A | 4V | 8Y | View |
| Lewis | Laborers | Welder | \$53.35 | 7A | 4V | 8Y | View |
| Lewis | Laborers | Well Point Laborer | \$53.35 | 7A | 4V | 8Y | View |
| Lewis | Laborers | Window Washer/Cleaner | \$40.36 | 7A | 4V | 8Y | View |
| Lewis | Laborers - Underground Sewer & Water | General Laborer & Topman | \$52.39 | 7A | 4V | 8Y | View |
| Lewis | Laborers - Underground Sewer & Water | Pipe Layer | \$53.35 | 7A | 4V | 8Y | View |
| Lewis | Landscape Construction | Landscape Construction/Landscaping Or Planting Laborers | \$40.36 | 7A | 4V | 8Y | View |
| Lewis | Landscape Construction | Landscape Operator | \$69.02 | 7A | 3K | 8X | View |
| Lewis | Landscape Maintenance | Groundskeeper | \$13.50 | | 1 | | View |
| Lewis | Lathers | Journey Level | \$64.94 | 5D | 1H | | View |
| Lewis | Marble Setters | Journey Level | \$60.57 | 7E | 1N | | View |
| Lewis | Metal Fabrication (In Shop) | Fitter | \$15.16 | | 1 | | View |
| Lewis | Metal Fabrication (In Shop) | Laborer | \$13.50 | | 1 | | View |
| Lewis | Metal Fabrication (In Shop) | Machine Operator | \$13.50 | | 1 | | View |
| Lewis | Metal Fabrication (In Shop) | Painter | \$13.50 | | 1 | | View |
| Lewis | Metal Fabrication (In Shop) | Welder | \$15.16 | | 1 | | View |
| Lewis | Millwright | Journey Level | \$66.44 | 7A | 4C | | View |
| Lewis | Modular Buildings | Cabinet Assembly | \$13.50 | | 1 | | View |
| Lewis | Modular Buildings | Electrician | \$13.50 | | 1 | | View |
| Lewis | Modular Buildings | Equipment Maintenance | \$13.50 | | 1 | | View |
| Lewis | Modular Buildings | Plumber | \$13.50 | | 1 | | View |
| Lewis | Modular Buildings | Production Worker | \$13.50 | | 1 | | View |
| Lewis | Modular Buildings | Tool Maintenance | \$13.50 | | 1 | | View |
| Lewis | Modular Buildings | Utility Person | \$13.50 | | 1 | | View |
| Lewis | Modular Buildings | Welder | \$13.50 | | 1 | | View |
| Lewis | Painters | Journey Level | \$45.40 | 6Z | 2B | | View |
| Lewis | Pile Driver | Crew Tender | \$69.91 | 7A | 4C | | View |

| | | | | | | | |
|-------|--|---|----------|--------------------|--------------------|--------------------|----------------------|
| Lewis | Pile Driver | Crew Tender/Technician | \$69.91 | 7A | 4C | | View |
| Lewis | Pile Driver | Hyperbaric Worker - Compressed Air Worker 0- 30.00 PSI | \$80.76 | 7A | 4C | | View |
| Lewis | Pile Driver | Hyperbaric Worker - Compressed Air Worker 30.01 - 44.00 PSI | \$85.76 | 7A | 4C | | View |
| Lewis | Pile Driver | Hyperbaric Worker - Compressed Air Worker 44.01 - 54.00 PSI | \$89.76 | 7A | 4C | | View |
| Lewis | Pile Driver | Hyperbaric Worker - Compressed Air Worker 54.01 - 60.00 PSI | \$94.76 | 7A | 4C | | View |
| Lewis | Pile Driver | Hyperbaric Worker - Compressed Air Worker 60.01 - 64.00 PSI | \$97.26 | 7A | 4C | | View |
| Lewis | Pile Driver | Hyperbaric Worker - Compressed Air Worker 64.01 - 68.00 PSI | \$102.26 | 7A | 4C | | View |
| Lewis | Pile Driver | Hyperbaric Worker - Compressed Air Worker 68.01 - 70.00 PSI | \$104.26 | 7A | 4C | | View |
| Lewis | Pile Driver | Hyperbaric Worker - Compressed Air Worker 70.01 - 72.00 PSI | \$106.26 | 7A | 4C | | View |
| Lewis | Pile Driver | Hyperbaric Worker - Compressed Air Worker 72.01 - 74.00 PSI | \$108.26 | 7A | 4C | | View |
| Lewis | Pile Driver | Journey Level | \$65.19 | 7A | 4C | | View |
| Lewis | Plasterers | Journey Level | \$61.67 | 7Q | 1R | | View |
| Lewis | Playground & Park Equipment Installers | Journey Level | \$13.50 | | 1 | | View |
| Lewis | Plumbers & Pipefitters | Journey Level | \$77.97 | 5A | 1G | | View |
| Lewis | Power Equipment Operators | Asphalt Plant Operator | \$70.17 | 7A | 3K | 8X | View |
| Lewis | Power Equipment Operators | Assistant Engineer | \$66.30 | 7A | 3K | 8X | View |
| Lewis | Power Equipment Operators | Barrier Machine (zipper) | \$69.55 | 7A | 3K | 8X | View |
| Lewis | Power Equipment Operators | Batch Plant Operator: Concrete | \$69.55 | 7A | 3K | 8X | View |
| Lewis | Power Equipment Operators | Bobcat | \$66.01 | 7A | 3K | 8X | View |
| Lewis | Power Equipment Operators | Brokk - Remote Demolition Equipment | \$66.01 | 7A | 3K | 8X | View |
| Lewis | Power Equipment Operators | Brooms | \$66.01 | 7A | 3K | 8X | View |
| Lewis | Power Equipment Operators | Bump Cutter | \$69.55 | 7A | 3K | 8X | View |
| Lewis | Power Equipment Operators | Cableways | \$70.17 | 7A | 3K | 8X | View |
| Lewis | Power Equipment Operators | Chipper | \$69.55 | 7A | 3K | 8X | View |
| Lewis | Power Equipment Operators | Compressor | \$66.01 | 7A | 3K | 8X | View |
| Lewis | Power Equipment Operators | Concrete Pump: Truck Mount With Boom Attachment Over 42m | \$70.17 | 7A | 3K | 8X | View |
| Lewis | Power Equipment Operators | Concrete Finish Machine - laser Screed | \$66.01 | 7A | 3K | 8X | View |

| | | | | | | | |
|-------|---|---|---------|--------------------|--------------------|--------------------|----------------------|
| Lewis | Power Equipment Operators | Concrete Pump - Mounted Or Trailer High Pressure Line Pump, Pump High Pressure | \$69.02 | 7A | 3K | 8X | View |
| Lewis | Power Equipment Operators | Concrete Pump: Truck Mount With Boom Attachment Up To 42m | \$69.55 | 7A | 3K | 8X | View |
| Lewis | Power Equipment Operators | Conveyors | \$69.02 | 7A | 3K | 8X | View |
| Lewis | Power Equipment Operators | Cranes Friction: 200 tons and over | \$72.63 | 7A | 3K | 8X | View |
| Lewis | Power Equipment Operators | Cranes, A-frame: 10 tons and under | \$66.30 | 7A | 3K | 8X | View |
| Lewis | Power Equipment Operators | Cranes: 100 tons through 199 tons, or 150' of boom (including jib with attachments) | \$71.20 | 7A | 3K | 8X | View |
| Lewis | Power Equipment Operators | Cranes: 20 tons through 44 tons with attachments | \$69.87 | 7A | 3K | 8X | View |
| Lewis | Power Equipment Operators | Cranes: 200 tons- 299 tons, or 250' of boom including jib with attachments | \$71.93 | 7A | 3K | 8X | View |
| Lewis | Power Equipment Operators | Cranes: 300 tons and over or 300' of boom including jib with attachments | \$72.63 | 7A | 3K | 8X | View |
| Lewis | Power Equipment Operators | Cranes: 45 tons through 99 tons, under 150' of boom(including jib with attachments) | \$70.49 | 7A | 3K | 8X | View |
| Lewis | Power Equipment Operators | Cranes: Friction cranes through 199 tons | \$71.93 | 7A | 3K | 8X | View |
| Lewis | Power Equipment Operators | Cranes: through 19 tons with attachments, A-frame over 10 tons | \$69.33 | 7A | 3K | 8X | View |
| Lewis | Power Equipment Operators | Crusher | \$69.55 | 7A | 3K | 8X | View |
| Lewis | Power Equipment Operators | Deck Engineer/deck Winches (power) | \$69.55 | 7A | 3K | 8X | View |
| Lewis | Power Equipment Operators | Derricks: on building work | \$70.49 | 7A | 3K | 8X | View |
| Lewis | Power Equipment Operators | Dozers D-9 & Under | \$69.02 | 7A | 3K | 8X | View |
| Lewis | Power Equipment Operators | Drill Oilers: Auger Type, Truck Or Crane Mount | \$69.02 | 7A | 3K | 8X | View |
| Lewis | Power Equipment Operators | Drilling Machine | \$70.88 | 7A | 3K | 8X | View |
| Lewis | Power Equipment Operators | Elevator and man-lift: permanent and shaft type | \$66.30 | 7A | 3K | 8X | View |
| Lewis | Power Equipment Operators | Finishing Machine, Bidwell And Gamaco & Similar Equipment | \$69.55 | 7A | 3K | 8X | View |
| Lewis | Power Equipment Operators | Forklift: 3000 lbs and over with attachments | \$69.33 | 7A | 3K | 8X | View |
| Lewis | Power Equipment Operators | Forklifts: under 3000 lbs. with attachments | \$66.30 | 7A | 3K | 8X | View |
| Lewis | Power Equipment Operators | Grade Engineer: Using Blueprints, Cut Sheets,etc. | \$69.55 | 7A | 3K | 8X | View |

| | | | | | | | |
|-------|---|--|---------|--------------------|--------------------|--------------------|----------------------|
| Lewis | Power Equipment Operators | Gradechecker/stakeman | \$66.01 | 7A | 3K | 8X | View |
| Lewis | Power Equipment Operators | Guardrail punch/Auger | \$69.55 | 7A | 3K | 8X | View |
| Lewis | Power Equipment Operators | Hard Tail End Dump Articulating Off- Road Equipment 45 Yards. & Over | \$70.17 | 7A | 3K | 8X | View |
| Lewis | Power Equipment Operators | Hard Tail End Dump Articulating Off-road Equipment Under 45 Yards | \$69.55 | 7A | 3K | 8X | View |
| Lewis | Power Equipment Operators | Horizontal/directional Drill Locator | \$69.02 | 7A | 3K | 8X | View |
| Lewis | Power Equipment Operators | Horizontal/directional Drill Operator | \$69.55 | 7A | 3K | 8X | View |
| Lewis | Power Equipment Operators | Hydralifts/boom trucks: 10 tons and under | \$66.30 | 7A | 3K | 8X | View |
| Lewis | Power Equipment Operators | Hydralifts/boom trucks: over 10 tons | \$69.33 | 7A | 3K | 8X | View |
| Lewis | Power Equipment Operators | Loader, Overhead 8 Yards. & Over | \$70.88 | 7A | 3K | 8X | View |
| Lewis | Power Equipment Operators | Loader, Overhead, 6 Yards. But Not Including 8 Yards | \$70.17 | 7A | 3K | 8X | View |
| Lewis | Power Equipment Operators | Loaders, Overhead Under 6 Yards | \$69.55 | 7A | 3K | 8X | View |
| Lewis | Power Equipment Operators | Loaders, Plant Feed | \$69.55 | 7A | 3K | 8X | View |
| Lewis | Power Equipment Operators | Loaders: Elevating Type Belt | \$69.02 | 7A | 3K | 8X | View |
| Lewis | Power Equipment Operators | Locomotives, All | \$69.55 | 7A | 3K | 8X | View |
| Lewis | Power Equipment Operators | Material Transfer Device | \$69.55 | 7A | 3K | 8X | View |
| Lewis | Power Equipment Operators | Mechanics: all (Leadmen - \$0.50 per hour over mechanic) | \$71.20 | 7A | 3K | 8X | View |
| Lewis | Power Equipment Operators | Motor patrol graders | \$70.17 | 7A | 3K | 8X | View |
| Lewis | Power Equipment Operators | Mucking Machine, Mole, Tunnel Drill, Boring, Road Header And/or Shield | \$70.17 | 7A | 3K | 8X | View |
| Lewis | Power Equipment Operators | Oil Distributors, Blower Distribution & Mulch Seeding Operator | \$66.01 | 7A | 3K | 8X | View |
| Lewis | Power Equipment Operators | Outside Hoists (elevators and manlifts), Air Tuggers, Strato | \$69.33 | 7A | 3K | 8X | View |
| Lewis | Power Equipment Operators | Overhead, bridge type Crane: 20 tons through 44 tons | \$69.87 | 7A | 3K | 8X | View |
| Lewis | Power Equipment Operators | Overhead, Bridge Type Crane: 20 Tons Through 44 Tons | \$69.55 | 7A | 3K | 8X | View |
| Lewis | Power Equipment Operators | Overhead, bridge type: 100 tons and over | \$71.20 | 7A | 3K | 8X | View |
| Lewis | Power Equipment Operators | Overhead, bridge type: 45 tons through 99 tons | \$70.49 | 7A | 3K | 8X | View |
| Lewis | Power Equipment Operators | Pavement Breaker | \$66.01 | 7A | 3K | 8X | View |

| | | | | | | | |
|-------|---|--|---------|--------------------|--------------------|--------------------|----------------------|
| Lewis | Power Equipment Operators | Pile Driver (other Than Crane Mount) | \$69.55 | 7A | 3K | 8X | View |
| Lewis | Power Equipment Operators | Plant Oiler - Asphalt, Crusher | \$69.02 | 7A | 3K | 8X | View |
| Lewis | Power Equipment Operators | Posthole Digger, Mechanical | \$66.01 | 7A | 3K | 8X | View |
| Lewis | Power Equipment Operators | Power Plant | \$66.01 | 7A | 3K | 8X | View |
| Lewis | Power Equipment Operators | Pumps - Water | \$66.01 | 7A | 3K | 8X | View |
| Lewis | Power Equipment Operators | Quad 9, HD 41, D10 And Over | \$70.17 | 7A | 3K | 8X | View |
| Lewis | Power Equipment Operators | Quick Tower: no cab, under 100 feet in height based to boom | \$66.30 | 7A | 3K | 8X | View |
| Lewis | Power Equipment Operators | Remote Control Operator On Rubber Tired Earth Moving Equipment | \$70.17 | 7A | 3K | 8X | View |
| Lewis | Power Equipment Operators | Rigger and Bellman | \$66.30 | 7A | 3K | 8X | View |
| Lewis | Power Equipment Operators | Rigger/Signal Person, Bellman(Certified) | \$69.33 | 7A | 3K | 8X | View |
| Lewis | Power Equipment Operators | Rollagon | \$70.17 | 7A | 3K | 8X | View |
| Lewis | Power Equipment Operators | Roller, Other Than Plant Mix | \$66.01 | 7A | 3K | 8X | View |
| Lewis | Power Equipment Operators | Roller, Plant Mix Or Multi-lift Materials | \$69.02 | 7A | 3K | 8X | View |
| Lewis | Power Equipment Operators | Roto-mill, Roto-grinder | \$69.55 | 7A | 3K | 8X | View |
| Lewis | Power Equipment Operators | Saws - Concrete | \$69.02 | 7A | 3K | 8X | View |
| Lewis | Power Equipment Operators | Scraper, Self Propelled Under 45 Yards | \$69.55 | 7A | 3K | 8X | View |
| Lewis | Power Equipment Operators | Scrapers - Concrete & Carry All | \$69.02 | 7A | 3K | 8X | View |
| Lewis | Power Equipment Operators | Scrapers, Self-propelled: 45 Yards And Over | \$70.17 | 7A | 3K | 8X | View |
| Lewis | Power Equipment Operators | Service Engineers: equipment | \$69.33 | 7A | 3K | 8X | View |
| Lewis | Power Equipment Operators | Shotcrete/gunite Equipment | \$66.01 | 7A | 3K | 8X | View |
| Lewis | Power Equipment Operators | Shovel, Excavator, Backhoe, Tractors Under 15 Metric Tons | \$69.02 | 7A | 3K | 8X | View |
| Lewis | Power Equipment Operators | Shovel, Excavator, Backhoe: Over 30 Metric Tons To 50 Metric Tons | \$70.17 | 7A | 3K | 8X | View |
| Lewis | Power Equipment Operators | Shovel, Excavator, Backhoes, Tractors: 15 To 30 Metric Tons | \$69.55 | 7A | 3K | 8X | View |
| Lewis | Power Equipment Operators | Shovel, Excavator, Backhoes: Over 50 Metric Tons To 90 Metric Tons | \$70.88 | 7A | 3K | 8X | View |
| Lewis | Power Equipment Operators | Shovel, Excavator, Backhoes: Over 90 Metric Tons | \$71.60 | 7A | 3K | 8X | View |
| Lewis | Power Equipment Operators | Slipform Pavers | \$70.17 | 7A | 3K | 8X | View |
| Lewis | Power Equipment Operators | Spreader, Topsider & Screedman | \$70.17 | 7A | 3K | 8X | View |

| | | | | | | | |
|-------|---|---|---------|--------------------|--------------------|--------------------|----------------------|
| Lewis | Power Equipment Operators | Subgrader Trimmer | \$69.55 | 7A | 3K | 8X | View |
| Lewis | Power Equipment Operators | Tower Bucket Elevators | \$69.02 | 7A | 3K | 8X | View |
| Lewis | Power Equipment Operators | Tower Crane: over 175' through 250' in height, base to boom | \$71.93 | 7A | 3K | 8X | View |
| Lewis | Power Equipment Operators | Tower crane: up to 175' in height base to boom | \$71.20 | 7A | 3K | 8X | View |
| Lewis | Power Equipment Operators | Tower Cranes: over 250' in height from base to boom. | \$72.63 | 7A | 3K | 8X | View |
| Lewis | Power Equipment Operators | Transporters, All Track Or Truck Type | \$70.17 | 7A | 3K | 8X | View |
| Lewis | Power Equipment Operators | Trenching Machines | \$69.02 | 7A | 3K | 8X | View |
| Lewis | Power Equipment Operators | Truck Crane Oiler/Driver: 100 tons and over | \$69.87 | 7A | 3K | 8X | View |
| Lewis | Power Equipment Operators | Truck crane oiler/driver: under 100 tons | \$69.33 | 7A | 3K | 8X | View |
| Lewis | Power Equipment Operators | Truck Mount Portable Conveyor | \$69.55 | 7A | 3K | 8X | View |
| Lewis | Power Equipment Operators | Welder | \$70.49 | 7A | 3K | 8X | View |
| Lewis | Power Equipment Operators | Wheel Tractors, Farmall Type | \$66.01 | 7A | 3K | 8X | View |
| Lewis | Power Equipment Operators | Yo Yo Pay Dozer | \$69.55 | 7A | 3K | 8X | View |
| Lewis | Power Equipment Operators-Underground Sewer & Water | Asphalt Plant Operator | \$70.17 | 7A | 3K | 8X | View |
| Lewis | Power Equipment Operators-Underground Sewer & Water | Assistant Engineer | \$66.30 | 7A | 3K | 8X | View |
| Lewis | Power Equipment Operators-Underground Sewer & Water | Barrier Machine (zipper) | \$69.55 | 7A | 3K | 8X | View |
| Lewis | Power Equipment Operators-Underground Sewer & Water | Batch Plant Operator: Concrete | \$69.55 | 7A | 3K | 8X | View |
| Lewis | Power Equipment Operators-Underground Sewer & Water | Bobcat | \$66.01 | 7A | 3K | 8X | View |
| Lewis | Power Equipment Operators-Underground Sewer & Water | Brokk - Remote Demolition Equipment | \$66.01 | 7A | 3K | 8X | View |
| Lewis | Power Equipment Operators-Underground Sewer & Water | Brooms | \$66.01 | 7A | 3K | 8X | View |
| Lewis | Power Equipment Operators-Underground Sewer & Water | Bump Cutter | \$69.55 | 7A | 3K | 8X | View |
| Lewis | Power Equipment Operators-Underground Sewer & Water | Cableways | \$70.17 | 7A | 3K | 8X | View |
| Lewis | Power Equipment Operators-Underground Sewer & Water | Chipper | \$69.55 | 7A | 3K | 8X | View |
| Lewis | Power Equipment Operators-Underground Sewer & Water | Compressor | \$66.01 | 7A | 3K | 8X | View |
| Lewis | Power Equipment Operators-Underground Sewer & Water | Concrete Pump: Truck Mount With Boom Attachment Over 42m | \$70.17 | 7A | 3K | 8X | View |
| Lewis | Power Equipment Operators-Underground Sewer & Water | Concrete Finish Machine - laser Screed | \$66.01 | 7A | 3K | 8X | View |
| Lewis | Power Equipment Operators-Underground Sewer & Water | Concrete Pump - Mounted Or Trailer High Pressure | \$69.02 | 7A | 3K | 8X | View |

| | | | | | | | |
|-------|---|---|---------|--------------------|--------------------|--------------------|----------------------|
| | | Line Pump, Pump High Pressure | | | | | |
| Lewis | Power Equipment Operators-Underground Sewer & Water | Concrete Pump: Truck Mount With Boom Attachment Up To 42m | \$69.55 | 7A | 3K | 8X | View |
| Lewis | Power Equipment Operators-Underground Sewer & Water | Conveyors | \$69.02 | 7A | 3K | 8X | View |
| Lewis | Power Equipment Operators-Underground Sewer & Water | Cranes Friction: 200 tons and over | \$72.63 | 7A | 3K | 8X | View |
| Lewis | Power Equipment Operators-Underground Sewer & Water | Cranes, A-frame: 10 tons and under | \$66.30 | 7A | 3K | 8X | View |
| Lewis | Power Equipment Operators-Underground Sewer & Water | Cranes: 100 tons through 199 tons, or 150' of boom (including jib with attachments) | \$71.20 | 7A | 3K | 8X | View |
| Lewis | Power Equipment Operators-Underground Sewer & Water | Cranes: 20 tons through 44 tons with attachments | \$69.87 | 7A | 3K | 8X | View |
| Lewis | Power Equipment Operators-Underground Sewer & Water | Cranes: 200 tons- 299 tons, or 250' of boom including jib with attachments | \$71.93 | 7A | 3K | 8X | View |
| Lewis | Power Equipment Operators-Underground Sewer & Water | Cranes: 300 tons and over or 300' of boom including jib with attachments | \$72.63 | 7A | 3K | 8X | View |
| Lewis | Power Equipment Operators-Underground Sewer & Water | Cranes: 45 tons through 99 tons, under 150' of boom(including jib with attachments) | \$70.49 | 7A | 3K | 8X | View |
| Lewis | Power Equipment Operators-Underground Sewer & Water | Cranes: Friction cranes through 199 tons | \$71.93 | 7A | 3K | 8X | View |
| Lewis | Power Equipment Operators-Underground Sewer & Water | Cranes: through 19 tons with attachments, A-frame over 10 tons | \$69.33 | 7A | 3K | 8X | View |
| Lewis | Power Equipment Operators-Underground Sewer & Water | Crusher | \$69.55 | 7A | 3K | 8X | View |
| Lewis | Power Equipment Operators-Underground Sewer & Water | Deck Engineer/deck Winches (power) | \$69.55 | 7A | 3K | 8X | View |
| Lewis | Power Equipment Operators-Underground Sewer & Water | Derricks: on building work | \$70.49 | 7A | 3K | 8X | View |
| Lewis | Power Equipment Operators-Underground Sewer & Water | Dozers D-9 & Under | \$69.02 | 7A | 3K | 8X | View |
| Lewis | Power Equipment Operators-Underground Sewer & Water | Drill Oilers: Auger Type, Truck Or Crane Mount | \$69.02 | 7A | 3K | 8X | View |
| Lewis | Power Equipment Operators-Underground Sewer & Water | Drilling Machine | \$70.88 | 7A | 3K | 8X | View |
| Lewis | Power Equipment Operators-Underground Sewer & Water | Elevator and man-lift: permanent and shaft type | \$66.30 | 7A | 3K | 8X | View |
| Lewis | Power Equipment Operators-Underground Sewer & Water | Finishing Machine, Bidwell And Gamaco & Similar Equipment | \$69.55 | 7A | 3K | 8X | View |
| Lewis | Power Equipment Operators-Underground Sewer & Water | Forklift: 3000 lbs and over with attachments | \$69.33 | 7A | 3K | 8X | View |
| Lewis | Power Equipment Operators-Underground Sewer & Water | Forklifts: under 3000 lbs. with attachments | \$66.30 | 7A | 3K | 8X | View |

| | | | | | | | |
|-------|---|--|---------|--------------------|--------------------|--------------------|----------------------|
| Lewis | Power Equipment Operators-Underground Sewer & Water | Grade Engineer: Using Blueprints, Cut Sheets,etc. | \$69.55 | 7A | 3K | 8X | View |
| Lewis | Power Equipment Operators-Underground Sewer & Water | Gradechecker/stakeman | \$66.01 | 7A | 3K | 8X | View |
| Lewis | Power Equipment Operators-Underground Sewer & Water | Guardrail punch/Auger | \$69.55 | 7A | 3K | 8X | View |
| Lewis | Power Equipment Operators-Underground Sewer & Water | Hard Tail End Dump Articulating Off- Road Equipment 45 Yards. & Over | \$70.17 | 7A | 3K | 8X | View |
| Lewis | Power Equipment Operators-Underground Sewer & Water | Hard Tail End Dump Articulating Off-road Equipment Under 45 Yards | \$69.55 | 7A | 3K | 8X | View |
| Lewis | Power Equipment Operators-Underground Sewer & Water | Horizontal/directional Drill Locator | \$69.02 | 7A | 3K | 8X | View |
| Lewis | Power Equipment Operators-Underground Sewer & Water | Horizontal/directional Drill Operator | \$69.55 | 7A | 3K | 8X | View |
| Lewis | Power Equipment Operators-Underground Sewer & Water | Hydralifts/boom trucks: 10 tons and under | \$66.30 | 7A | 3K | 8X | View |
| Lewis | Power Equipment Operators-Underground Sewer & Water | Hydralifts/boom trucks: over 10 tons | \$69.33 | 7A | 3K | 8X | View |
| Lewis | Power Equipment Operators-Underground Sewer & Water | Loader, Overhead 8 Yards. & Over | \$70.88 | 7A | 3K | 8X | View |
| Lewis | Power Equipment Operators-Underground Sewer & Water | Loader, Overhead, 6 Yards. But Not Including 8 Yards | \$70.17 | 7A | 3K | 8X | View |
| Lewis | Power Equipment Operators-Underground Sewer & Water | Loaders, Overhead Under 6 Yards | \$69.55 | 7A | 3K | 8X | View |
| Lewis | Power Equipment Operators-Underground Sewer & Water | Loaders, Plant Feed | \$69.55 | 7A | 3K | 8X | View |
| Lewis | Power Equipment Operators-Underground Sewer & Water | Loaders: Elevating Type Belt | \$69.02 | 7A | 3K | 8X | View |
| Lewis | Power Equipment Operators-Underground Sewer & Water | Locomotives, All | \$69.55 | 7A | 3K | 8X | View |
| Lewis | Power Equipment Operators-Underground Sewer & Water | Material Transfer Device | \$69.55 | 7A | 3K | 8X | View |
| Lewis | Power Equipment Operators-Underground Sewer & Water | Mechanics: all (Leadmen - \$0.50 per hour over mechanic) | \$71.20 | 7A | 3K | 8X | View |
| Lewis | Power Equipment Operators-Underground Sewer & Water | Motor patrol graders | \$70.17 | 7A | 3K | 8X | View |
| Lewis | Power Equipment Operators-Underground Sewer & Water | Mucking Machine, Mole, Tunnel Drill, Boring, Road Header And/or Shield | \$70.17 | 7A | 3K | 8X | View |
| Lewis | Power Equipment Operators-Underground Sewer & Water | Oil Distributors, Blower Distribution & Mulch Seeding Operator | \$66.01 | 7A | 3K | 8X | View |
| Lewis | Power Equipment Operators-Underground Sewer & Water | Outside Hoists (elevators and manlifts), Air Tuggers, Strato | \$69.33 | 7A | 3K | 8X | View |
| Lewis | Power Equipment Operators-Underground Sewer & Water | Overhead, bridge type Crane: 20 tons through 44 tons | \$69.87 | 7A | 3K | 8X | View |

| | | | | | | | |
|-------|---|--|---------|--------------------|--------------------|--------------------|----------------------|
| Lewis | Power Equipment Operators-Underground Sewer & Water | Overhead, Bridge Type Crane: 20 Tons Through 44 Tons | \$69.55 | 7A | 3K | 8X | View |
| Lewis | Power Equipment Operators-Underground Sewer & Water | Overhead, bridge type: 100 tons and over | \$71.20 | 7A | 3K | 8X | View |
| Lewis | Power Equipment Operators-Underground Sewer & Water | Overhead, bridge type: 45 tons through 99 tons | \$70.49 | 7A | 3K | 8X | View |
| Lewis | Power Equipment Operators-Underground Sewer & Water | Pavement Breaker | \$66.01 | 7A | 3K | 8X | View |
| Lewis | Power Equipment Operators-Underground Sewer & Water | Pile Driver (other Than Crane Mount) | \$69.55 | 7A | 3K | 8X | View |
| Lewis | Power Equipment Operators-Underground Sewer & Water | Plant Oiler - Asphalt, Crusher | \$69.02 | 7A | 3K | 8X | View |
| Lewis | Power Equipment Operators-Underground Sewer & Water | Posthole Digger, Mechanical | \$66.01 | 7A | 3K | 8X | View |
| Lewis | Power Equipment Operators-Underground Sewer & Water | Power Plant | \$66.01 | 7A | 3K | 8X | View |
| Lewis | Power Equipment Operators-Underground Sewer & Water | Pumps - Water | \$66.01 | 7A | 3K | 8X | View |
| Lewis | Power Equipment Operators-Underground Sewer & Water | Quad 9, HD 41, D10 And Over | \$70.17 | 7A | 3K | 8X | View |
| Lewis | Power Equipment Operators-Underground Sewer & Water | Quick Tower: no cab, under 100 feet in height based to boom | \$66.30 | 7A | 3K | 8X | View |
| Lewis | Power Equipment Operators-Underground Sewer & Water | Remote Control Operator On Rubber Tired Earth Moving Equipment | \$70.17 | 7A | 3K | 8X | View |
| Lewis | Power Equipment Operators-Underground Sewer & Water | Rigger and Bellman | \$66.30 | 7A | 3K | 8X | View |
| Lewis | Power Equipment Operators-Underground Sewer & Water | Rigger/Signal Person, Bellman(Certified) | \$69.33 | 7A | 3K | 8X | View |
| Lewis | Power Equipment Operators-Underground Sewer & Water | Rollagon | \$70.17 | 7A | 3K | 8X | View |
| Lewis | Power Equipment Operators-Underground Sewer & Water | Roller, Other Than Plant Mix | \$66.01 | 7A | 3K | 8X | View |
| Lewis | Power Equipment Operators-Underground Sewer & Water | Roller, Plant Mix Or Multi-lift Materials | \$69.02 | 7A | 3K | 8X | View |
| Lewis | Power Equipment Operators-Underground Sewer & Water | Roto-mill, Roto-grinder | \$69.55 | 7A | 3K | 8X | View |
| Lewis | Power Equipment Operators-Underground Sewer & Water | Saws - Concrete | \$69.02 | 7A | 3K | 8X | View |
| Lewis | Power Equipment Operators-Underground Sewer & Water | Scraper, Self Propelled Under 45 Yards | \$69.55 | 7A | 3K | 8X | View |
| Lewis | Power Equipment Operators-Underground Sewer & Water | Scrapers - Concrete & Carry All | \$69.02 | 7A | 3K | 8X | View |
| Lewis | Power Equipment Operators-Underground Sewer & Water | Scrapers, Self-propelled: 45 Yards And Over | \$70.17 | 7A | 3K | 8X | View |
| Lewis | Power Equipment Operators-Underground Sewer & Water | Service Engineers: equipment | \$69.33 | 7A | 3K | 8X | View |
| Lewis | Power Equipment Operators-Underground Sewer & Water | Shotcrete/gunite Equipment | \$66.01 | 7A | 3K | 8X | View |

| | | | | | | | |
|-------|---|--|---------|--------------------|--------------------|--------------------|----------------------|
| Lewis | Power Equipment Operators-Underground Sewer & Water | Shovel, Excavator, Backhoe, Tractors Under 15 Metric Tons | \$69.02 | 7A | 3K | 8X | View |
| Lewis | Power Equipment Operators-Underground Sewer & Water | Shovel, Excavator, Backhoe: Over 30 Metric Tons To 50 Metric Tons | \$70.17 | 7A | 3K | 8X | View |
| Lewis | Power Equipment Operators-Underground Sewer & Water | Shovel, Excavator, Backhoes, Tractors: 15 To 30 Metric Tons | \$69.55 | 7A | 3K | 8X | View |
| Lewis | Power Equipment Operators-Underground Sewer & Water | Shovel, Excavator, Backhoes: Over 50 Metric Tons To 90 Metric Tons | \$70.88 | 7A | 3K | 8X | View |
| Lewis | Power Equipment Operators-Underground Sewer & Water | Slipform Pavers | \$70.17 | 7A | 3K | 8X | View |
| Lewis | Power Equipment Operators-Underground Sewer & Water | Spreader, Topsider & Screedman | \$70.17 | 7A | 3K | 8X | View |
| Lewis | Power Equipment Operators-Underground Sewer & Water | Subgrader Trimmer | \$69.55 | 7A | 3K | 8X | View |
| Lewis | Power Equipment Operators-Underground Sewer & Water | Tower Bucket Elevators | \$69.02 | 7A | 3K | 8X | View |
| Lewis | Power Equipment Operators-Underground Sewer & Water | Tower Crane: over 175' through 250' in height, base to boom | \$71.93 | 7A | 3K | 8X | View |
| Lewis | Power Equipment Operators-Underground Sewer & Water | Tower crane: up to 175' in height base to boom | \$71.20 | 7A | 3K | 8X | View |
| Lewis | Power Equipment Operators-Underground Sewer & Water | Tower Cranes: over 250' in height from base to boom. | \$72.63 | 7A | 3K | 8X | View |
| Lewis | Power Equipment Operators-Underground Sewer & Water | Transporters, All Track Or Truck Type | \$70.17 | 7A | 3K | 8X | View |
| Lewis | Power Equipment Operators-Underground Sewer & Water | Trenching Machines | \$69.02 | 7A | 3K | 8X | View |
| Lewis | Power Equipment Operators-Underground Sewer & Water | Truck Crane Oiler/Driver: 100 tons and over | \$69.87 | 7A | 3K | 8X | View |
| Lewis | Power Equipment Operators-Underground Sewer & Water | Truck crane oiler/driver: under 100 tons | \$69.33 | 7A | 3K | 8X | View |
| Lewis | Power Equipment Operators-Underground Sewer & Water | Truck Mount Portable Conveyor | \$69.55 | 7A | 3K | 8X | View |
| Lewis | Power Equipment Operators-Underground Sewer & Water | Welder | \$70.49 | 7A | 3K | 8X | View |
| Lewis | Power Equipment Operators-Underground Sewer & Water | Wheel Tractors, Farmall Type | \$66.01 | 7A | 3K | 8X | View |
| Lewis | Power Equipment Operators-Underground Sewer & Water | Yo Yo Pay Dozer | \$69.55 | 7A | 3K | 8X | View |
| Lewis | Power Line Clearance Tree Trimmers | Journey Level In Charge | \$53.10 | 5A | 4A | | View |
| Lewis | Power Line Clearance Tree Trimmers | Spray Person | \$50.40 | 5A | 4A | | View |
| Lewis | Power Line Clearance Tree Trimmers | Tree Equipment Operator | \$53.10 | 5A | 4A | | View |
| Lewis | Power Line Clearance Tree Trimmers | Tree Trimmer | \$47.48 | 5A | 4A | | View |

| | | | | | | | |
|-------|--|--------------------------------------|---------|--------------------|--------------------|--------------------|----------------------|
| Lewis | Power Line Clearance Tree Trimmers | Tree Trimmer Groundperson | \$36.10 | 5A | 4A | | View |
| Lewis | Refrigeration & Air Conditioning Mechanics | Journey Level | \$77.96 | 5A | 1G | | View |
| Lewis | Residential Brick Mason | Journey Level | \$21.96 | | 1 | | View |
| Lewis | Residential Carpenters | Journey Level | \$24.89 | | 1 | | View |
| Lewis | Residential Cement Masons | Journey Level | \$16.79 | | 1 | | View |
| Lewis | Residential Drywall Applicators | Journey Level | \$36.07 | | 1 | | View |
| Lewis | Residential Drywall Tapers | Journey Level | \$24.48 | | 1 | | View |
| Lewis | Residential Electricians | Journey Level | \$36.53 | 5A | 1B | | View |
| Lewis | Residential Glaziers | Journey Level | \$25.40 | | 1 | | View |
| Lewis | Residential Insulation Applicators | Journey Level | \$28.53 | | 1 | | View |
| Lewis | Residential Laborers | Journey Level | \$23.10 | | 1 | | View |
| Lewis | Residential Marble Setters | Journey Level | \$21.96 | | 1 | | View |
| Lewis | Residential Painters | Journey Level | \$18.76 | | 1 | | View |
| Lewis | Residential Plumbers & Pipefitters | Journey Level | \$26.35 | | 1 | | View |
| Lewis | Residential Refrigeration & Air Conditioning Mechanics | Journey Level | \$32.89 | | 1 | | View |
| Lewis | Residential Sheet Metal Workers | Journey Level | \$33.28 | | 1 | | View |
| Lewis | Residential Soft Floor Layers | Journey Level | \$14.86 | | 1 | | View |
| Lewis | Residential Sprinkler Fitters (Fire Protection) | Journey Level | \$20.28 | | 1 | | View |
| Lewis | Residential Stone Masons | Journey Level | \$21.96 | | 1 | | View |
| Lewis | Residential Terrazzo Workers | Journey Level | \$14.86 | | 1 | | View |
| Lewis | Residential Terrazzo/Tile Finishers | Journey Level | \$14.86 | | 1 | | View |
| Lewis | Residential Tile Setters | Journey Level | \$14.86 | | 1 | | View |
| Lewis | Roofers | Journey Level | \$55.15 | 5A | 20 | | View |
| Lewis | Roofers | Using Irritable Bituminous Materials | \$58.15 | 5A | 20 | | View |
| Lewis | Sheet Metal Workers | Journey Level (Field or Shop) | \$89.61 | 7F | 1E | | View |
| Lewis | Sign Makers & Installers (Electrical) | Journey Level | \$18.04 | | 1 | | View |
| Lewis | Sign Makers & Installers (Non-Electrical) | Journey Level | \$52.39 | 7A | 4V | 8Y | View |
| Lewis | Soft Floor Layers | Journey Level | \$51.07 | 5A | 3J | | View |
| Lewis | Solar Controls For Windows | Journey Level | \$13.50 | | 1 | | View |
| Lewis | Sprinkler Fitters (Fire Protection) | Journey Level | \$65.49 | 7J | 1R | | View |
| Lewis | Stage Rigging Mechanics (Non Structural) | Journey Level | \$13.50 | | 1 | | View |
| Lewis | Stone Masons | Journey Level | \$60.57 | 7E | 1N | | View |

| | | | | | | | |
|-------|--|--------------------------------------|---------|-----------|-----------|-----------|----------------------|
| Lewis | Street And Parking Lot Sweeper Workers | Journey Level | \$16.00 | | <u>1</u> | | View |
| Lewis | Surveyors | Chain Person | \$68.39 | <u>7A</u> | <u>3K</u> | | View |
| Lewis | Surveyors | Instrument Person | \$69.02 | <u>7A</u> | <u>3K</u> | | View |
| Lewis | Surveyors | Party Chief | \$70.17 | <u>7A</u> | <u>3K</u> | | View |
| Lewis | Telecommunication Technicians | Journey Level | \$46.47 | <u>6Z</u> | <u>1B</u> | | View |
| Lewis | Telephone Line Construction - Outside | Cable Splicer | \$41.81 | <u>5A</u> | <u>2B</u> | | View |
| Lewis | Telephone Line Construction - Outside | Hole Digger/Ground Person | \$23.53 | <u>5A</u> | <u>2B</u> | | View |
| Lewis | Telephone Line Construction - Outside | Installer (Repairer) | \$40.09 | <u>5A</u> | <u>2B</u> | | View |
| Lewis | Telephone Line Construction - Outside | Special Aparatus Installer I | \$41.81 | <u>5A</u> | <u>2B</u> | | View |
| Lewis | Telephone Line Construction - Outside | Special Apparatus Installer II | \$40.99 | <u>5A</u> | <u>2B</u> | | View |
| Lewis | Telephone Line Construction - Outside | Telephone Equipment Operator (Heavy) | \$41.81 | <u>5A</u> | <u>2B</u> | | View |
| Lewis | Telephone Line Construction - Outside | Telephone Equipment Operator (Light) | \$38.92 | <u>5A</u> | <u>2B</u> | | View |
| Lewis | Telephone Line Construction - Outside | Telephone Lineperson | \$38.92 | <u>5A</u> | <u>2B</u> | | View |
| Lewis | Telephone Line Construction - Outside | Television Groundperson | \$22.32 | <u>5A</u> | <u>2B</u> | | View |
| Lewis | Telephone Line Construction - Outside | Television Lineperson/Installer | \$29.60 | <u>5A</u> | <u>2B</u> | | View |
| Lewis | Telephone Line Construction - Outside | Television System Technician | \$35.20 | <u>5A</u> | <u>2B</u> | | View |
| Lewis | Telephone Line Construction - Outside | Television Technician | \$31.67 | <u>5A</u> | <u>2B</u> | | View |
| Lewis | Telephone Line Construction - Outside | Tree Trimmer | \$38.92 | <u>5A</u> | <u>2B</u> | | View |
| Lewis | Terrazzo Workers | Journey Level | \$55.71 | <u>7E</u> | <u>1N</u> | | View |
| Lewis | Tile Setters | Journey Level | \$55.71 | <u>7E</u> | <u>1N</u> | | View |
| Lewis | Tile, Marble & Terrazzo Finishers | Finisher | \$46.54 | <u>7E</u> | <u>1N</u> | | View |
| Lewis | Traffic Control Stripers | Journey Level | \$49.13 | <u>7A</u> | <u>1K</u> | | View |
| Lewis | Truck Drivers | Asphalt Mix Over 16 Yards | \$63.80 | <u>5D</u> | <u>4Y</u> | <u>8L</u> | View |
| Lewis | Truck Drivers | Asphalt Mix To 16 Yards | \$62.96 | <u>5D</u> | <u>4Y</u> | <u>8L</u> | View |
| Lewis | Truck Drivers | Dump Truck | \$62.96 | <u>5D</u> | <u>4Y</u> | <u>8L</u> | View |
| Lewis | Truck Drivers | Dump Truck & Trailer | \$63.80 | <u>5D</u> | <u>4Y</u> | <u>8L</u> | View |
| Lewis | Truck Drivers | Other Trucks | \$63.80 | <u>5D</u> | <u>4Y</u> | <u>8L</u> | View |
| Lewis | Truck Drivers - Ready Mix | Transit Mix | \$63.80 | <u>5D</u> | <u>4Y</u> | <u>8L</u> | View |
| Lewis | Well Drillers & Irrigation Pump Installers | Irrigation Pump Installer | \$18.18 | | <u>1</u> | | View |
| Lewis | Well Drillers & Irrigation Pump Installers | Oiler | \$13.50 | | <u>1</u> | | View |
| Lewis | Well Drillers & Irrigation Pump Installers | Well Driller | \$18.00 | | <u>1</u> | | View |

6.

PERFORMANCE BOND

**PERFORMANCE BOND FOR
LEWIS COUNTY, WASHINGTON**

Bond No. _____

WE, _____ d/b/a _____ (Insert legal name of Contractor)
(Insert trade name of Contractor, if any)

(hereinafter "Principal"), and _____ (hereinafter "Surety"), are held and firmly bound unto **LEWIS COUNTY, WASHINGTON** (hereinafter "County"), as Obligee, in an amount (in lawful money of the United States of America) equal to the total compensation and expense reimbursement payable to Principal for satisfactory completion of Principal's work under Contract No. _____ between Principal and County, which total is *initially* _____ Dollars (\$ _____), for the payment of which sum Principal and Surety bind themselves, their executors, administrators, legal representatives, successors and assigns, jointly and severally, firmly by these presents.. Said contract (hereinafter referred to as "the Contract") is for _____ and is made a part hereof by this reference. The Contract includes the original agreement as well as all documents attached thereto or made a part thereof and amendments, change orders, and any other document modifying, adding to or deleting from said Contract any portion thereof.

This Bond is executed in accordance with the laws of the State of Washington, and is subject to all provisions thereof and the ordinances of County insofar as they are not in conflict therewith, and is entered into for the use and benefit of County, and all laborers, mechanics, subcontractors, and materialmen, and all persons who supply such person or persons, or subcontractors, with provisions or supplies for the carrying on of the work covered by Contract No. _____ between the below-named Contractor and County for _____, a copy of which Contract, by this reference is made a part hereof and is hereinafter referred to as "the Contract." (The Contract as defined herein includes the aforesaid agreement together with all of the Contract documents including addenda, exhibits, attachments, modifications, alterations, and additions thereto, deletions therefrom, amendments and any other document or provision attached to or incorporated into the Contract)

THE CONDITION OF THIS OBLIGATION is such that if Contractor shall promptly and faithfully performs the Contract, then this obligation shall be null and void; otherwise it shall remain in full force and effect.

THE PARTIES FURTHER ACKNOWLEDGE & AGREE AS FOLLOWS:

- (1) Surety hereby consents to, and waives notice of, any alteration, change order, or other modification of the Contract and any extension of time made by County, except that any single or cumulative change order amounting to more than twenty-five percent (25%) of the penal sum of this bond shall require Surety's written consent.
- (2) Surety recognizes that the Contract includes provisions for additions, deletions, and modifications to the work or Contract Time and the amounts payable to Contractor. Subject to the limitations contained in paragraph (1) above, no such change or any combination thereof, shall void or impair Surety's obligation hereunder.
- (3) Surety shall indemnify, defend and protect County against any claim of direct or indirect loss resulting from the failure:
 - (a) Of the Contractor (or any of the employees, subcontractors, or lower tier subcontractors of the Contractor) to faithfully perform the Contract, or
 - (b) Of the Contractor (or the subcontractors or lower tier subcontractors of the Contractor) to pay all laborers, mechanics, subcontractors, lower tier subcontractors, material person, or any other person who provides supplies or provisions for carrying out the work.
- (4) Whenever County has declared Contractor to be in default and County has given Surety written notice of such declaration, Surety shall promptly (in no event more than thirty [30] days following receipt of such notice), specify, in written notice to County, which of the following actions Surety intends to take to remedy such default, and thereafter shall:
 - (a) Remedy the default within fifteen (15) days after its notice to County, as stated in such notice; or
 - (b) Assume within fifteen (15) days following its notice to County, full responsibility for the completion of the Contract in accordance with all of its provisions, as stated in such notice, and become entitled to payment of the balance of the Contract sum as provided in the Contract; or
 - (c) Pay County upon completion of the Contract, in cash, the cost of completion together with all other reasonable costs and expenses incurred by County as a result of Contractor's default, including but not limited to those incurred by County to mitigate its losses, which may include but are not limited to attorneys' fees and the cost of efforts to complete the work prior to Surety's exercising any option available to it under this Bond; or
 - (d) Obtain a bid or bids for completing the Contract in accordance with its terms and conditions, and upon a determination by County and Surety jointly of the lowest responsible bidder, arrange for one or more agreements between such bidder and County, and make available as work progresses (even though there is a default or a succession of defaults under such agreement(s) for completion arranged for under this paragraph) sufficient funds to pay the cost of completion less the balance of the Contract price, but not exceeding, including other costs and damages for which Surety may be liable hereunder, the penal sum of this Bond. The term "balance of the Contract price," as used in this paragraph, shall mean the total amount payable by County to Contractor under the Contract, less the amount properly paid by County to Contractor.

(5) If County commences suit and obtains judgment against Surety for recovery hereunder, then Surety, in addition to such judgment, shall pay all costs and attorneys' fees incurred by County in enforcement of County's rights hereunder. The venue for any action arising out of or in connection with this bond shall be in Lewis County, Washington.

(6) No right or action shall accrue on this Bond to or for the use of any person or corporation other than Lewis County, except as herein provided.

(7) No rider, amendment or other document modifies this Bond except as follows, which by this reference is incorporated herein:

SURETY'S QUALIFICATIONS: Every Surety named on this bond must appear on the United States Treasury Department's most current list (Circular 570 as amended or superseded) and be authorized by the Washington State Insurance Commissioner to transact business as a surety in the State of Washington. In addition, the Surety must have a current rating of at least A-VII in A. M. Best's Key Rating Guide.

INSTRUCTIONS FOR SIGNATURES: This bond must be signed by the president or a vice-president of a corporation; the managing general partner of a partnership; managing joint venturer of a joint venture; manager of a limited liability company or, if no manager has been designated, a member of such LLC; a general partner of a limited liability partnership; or the owner(s) of a sole proprietorship. If the bond is signed by any other representative, the Principal must attach currently-dated, written proof of that signer's authority to bind the Principal, identifying and quoting the provision in the corporate articles of incorporation, bylaws, Board resolution, partnership agreement, certificate of formation, or other document authorizing delegation of signature authority to such signer, and confirmation acceptable to the County that such delegation was in effect on the date the bond was signed. **A NOTARY PUBLIC MUST ACKNOWLEDGE EACH SIGNATURE BELOW.**

FOR THE SURETY:

By _____
(Signature of Attorney-in-Fact)

(Type or print name of Attorney-in-Fact)

(Type or print telephone number for Attorney-in-Fact)

FOR THE PRINCIPAL:

By: _____
(Signature of authorized signer for Contractor)

(Type or print name of signer for Contractor)

(Type or print title of signer for Contractor)

STATE OF _____)
COUNTY OF _____) ss:

ACKNOWLEDGMENT FOR CONTRACTOR

On this ____ day of _____, _____, before me a notary public in and for the State of _____, duly commissioned and sworn, personally appeared _____, the person described in and who executed the foregoing bond, and acknowledged to me that _____ signed and sealed said bond as the free and voluntary act and deed of the Contractor so identified in the foregoing bond for the uses and purposes therein mentioned, and on oath stated that _____ is authorized to execute said bond for the Contractor named therein. WITNESS my hand and official seal hereto affixed the day and year in this certificate first above written.

(Signature of Notary Public)

(Print or type name of Notary Public)

Notary Public in and for the State of _____ residing at _____
My commission expires _____.

SEAL →

STATE OF _____)
COUNTY OF _____) ss:

ACKNOWLEDGMENT FOR SURETY

On this ____ day of _____, _____, before me a notary public in and for the State of _____, duly commissioned and sworn, personally appeared _____, Attorney-in-Fact for the Surety that executed the foregoing bond, and acknowledged said bond to be the free and voluntary act and deed of the Surety for the uses and purposes therein mentioned, and on oath stated that _____ is authorized to execute said bond on behalf of the Surety, and that the seal affixed on said bond or the annexed Power of Attorney is the corporate seal of said Surety. WITNESS my hand and official seal hereto affixed the day and year in this certificate first above written.

(Signature of Notary Public)

(Print or type name of Notary Public)

Notary Public in and for the State of _____ residing at _____
My commission expires _____.

SEAL →

7.

**CERTIFICATE
OF
INSURANCE**

EXHIBIT 1 -- INSURANCE COVERAGE REQUIREMENTS

✓ INDICATES WHAT TYPE OF INSURANCE IS REQUIRED

| <u>TYPE OF INSURANCE</u> | | <u>LIMITS OF LIABILITY</u> | |
|---|--|----------------------------|-------------|
| | | Each Occurrence | Aggregate |
| GENERAL LIABILITY | | | |
| ✓ Comprehensive Form | Bodily Injury | \$1,000,000 | \$1,000,000 |
| ✓ Premises - Operations | Property Damage | \$1,000,000 | \$1,000,000 |
| Explosion & Collapse Hazard | | | |
| Underground Hazard | | | |
| <u>OR</u> | | | |
| ✓ Products/Completed Operations Hazard | | | |
| ✓ Contractual Insurance | Bodily Injury and Property Damage Combined Single Limit | \$1,000,000 | \$1,000,000 |
| ✓ Broad Form Property Damage, Incl. Care, Custody Control | | | |
| ✓ Independent Contractors | | | |
| ✓ Personal Injury | Personal Injury | \$1,000,000 | \$1,000,000 |
| AUTOMOBILE LIABILITY | | | |
| ✓ Comprehensive Form | Bodily Injury (Each Person) | \$500,000 | |
| ✓ Owned | Bodily Injury (Each Accident) | \$500,000 | |
| ✓ Hired | Property Damage OR | \$500,000 | |
| ✓ Non-Owned | Bodily Injury & Property Damage Combined Single Limit | \$500,000 | |
| EXCESS LIABILITY (Over and above automobile and general liability) | | | |
| Umbrella Form | Bodily Injury/Property Damage Combined | \$1,000,000 OR | \$1,000,000 |
| ✓ Excess Liability Gap Layer | | \$500,000 | \$500,000 |
| ✓ WORKER'S COMPENSATION and | | Statutory | |
| ✓ EMPLOYER LIABILITY | | \$1,000,000 | |
| OTHER | | | |
| Builder's All Risk | Amount of Contract Price | \$ _____ | |
| Errors & Omissions (Professional Liability) | | \$500,000 | |

Please indicate: Claims-Made Form: _____, Occurrence Form: _____,
Extending Reporting Provisions Avail. _____

The Contractor's insurance company must provide a certificate of insurance on the Lewis County form showing the above required coverage and modified to conform to the following endorsement. The following endorsement must also be signed by the insurer.



| | | | | | |
|---|--|---|--|--------------------------------------|--|
| INSURED (Legal name and business address) | | CERTIFICATE HOLDER: | | CONTRACT NUMBER | |
| | | LEWIS COUNTY, WASHINGTON DEPT. OF CENTRAL SERVICES | | DATE ISSUED: | |
| | | LEWIS COUNTY HISTORICAL COURTHOUSE | | | |
| | | 351 N. W. NORTH STREET CHEHALIS, WASHINGTON 98532 | | | |
| PROJECT DESCRIPTION / LOCATIONS / VEHICLES / RESTRICTIONS / SPECIAL ITEMS: | | | | | |
| This is to certify that policies of Insurance listed below have been issued to the Insured named above for the policy period indicated. | | | | | |
| CO LTR | TYPE OF INSURANCE | POLICY NUMBER | Date Policy Effective (MM/DD/YY) | Date Policy Expires (MM/DD/YY) | ALL LIMITS IN THOUSANDS |
| | GENERAL LIABILITY | | | | General Aggregate \$ |
| | <input type="checkbox"/> Commercial General Liability | | | | Products Comp/Ops Aggregate \$ |
| | <input type="checkbox"/> Claims Made <input type="checkbox"/> Occurrence | | | | Personal & Advertising Injury \$ |
| | <input type="checkbox"/> Owner's & Contractors Protection | | | | Each Occurrence \$ |
| | <input type="checkbox"/> Deductible \$ | | | | Fire Damage (Any One Fire) \$ |
| | | | | | Medical Expense (Any One Person) \$ |
| | AUTOMOBILE LIABILITY | | | | CSL \$ |
| | <input type="checkbox"/> Any Auto | | | | Bodily Injury (per person) \$ |
| | <input type="checkbox"/> All Owned Autos | | | | Bodily Injury (per accident) \$ |
| | <input type="checkbox"/> Scheduled Autos | | | | Property Damage \$ |
| | <input type="checkbox"/> Hired Autos | | | | |
| | <input type="checkbox"/> Non-Owned Autos | | | | |
| | <input type="checkbox"/> Garage Liability | | | | |
| | <input type="checkbox"/> Deductible \$ | | | | |
| | EXCESS LIABILITY | | | | Each Occurrence Aggregate |
| | <input type="checkbox"/> Other Than Umbrella Form | | | | \$ \$ |
| | WORKERS COMPENSATION AND EMPLOYER'S LIABILITY | | | | STATUTORY \$ (Each Accident) \$ (Disease Policy Limit) \$ (Disease-Each Employee) |
| | OTHER | | | | |
| ADDITIONAL PROVISIONS | | | | | |
| LEWIS COUNTY is included as additional insured as related to the above-mentioned project. Should any of the above described policies be cancelled before the expiration date thereof, the issuing Company must deliver or mail not less than 45 days written notice to the above Certificate Holder, per RCW 48.18.290 | | | | | |
| COMPANIES AFFORDING COVERAGE | | | ISSUING COMPANY, AGENT OR REPRESENTATIVE | | |
| NOTE: Attach a separate sheet to this certificate giving all the company names and their percentage of coverage, if clarification is needed, | | | NAME: | | |
| | | | ADDRESS: | | |
| Company Letter | A | | | | |
| | B | | | | |
| | C | | | | |
| | D | | | | |

| | | | |
|--|---|--|--|
| | E | | |
|--|---|--|--|

8.

NON-COLLUSION AFFIDAVIT

NON-COLLUSION AFFIDAVIT

STATE OF WASHINGTON

COUNTY OF Lewis County

The undersigned, being duly sworn, deposes and says that the person, firm, association, co-partnership or corporation herein named, has not, either directly or indirectly, entered into any agreement, participated in any collusion, or otherwise taken any action in restraint of free competitive bidding in the preparation and submission of a proposal to LEWIS COUNTY for consideration in the award of a contract on the improvement described as follows:

L&J Fire Alarm Replacement # 31-2100

Further, that this bid is not a sham or collusion, and in no respect or degree is the bid made in the interest or on behalf of any person, firm, or corporation not named in the Proposal containing such bid.

CORPORATE SEAL) _____
Name of Firm

Signature of Authorized Member

SWORN to before me this _____ day of _____, 20_____.

SEAL) _____
Notary Public in and for the State of Washington

Residing at: _____

My commission expires: _____

9.

BID FORM

Project Name: L&J Fire Alarm Replacement Project Project No.: 31-2100

Name of Firm: _____

LEWIS COUNTY
DEPARTMENT OF INTERNAL SERVICES
CAPITAL FACILITIES DIVISION
351 NW NORTH ST.
CHEHALIS, WA 98532

In compliance
contract
the following
submitted:

BID PROPOSAL

with the
documents,
bid proposal is

1) BASE BID (*Including Trench Excavation Safety Provisions*)

_____ \$ _____
(Please print dollar amount in space above) (do not include Washington State Sales Tax)

TRENCH EXCAVATION SAFETY PROVISIONS

\$

(Included also in Base Bid)

If the bid amount contains any work which requires trenching exceeding a depth of four feet, all costs for trench safety shall be included in the Base Bid **and indicated above** for adequate trench safety systems in compliance with Chapter 39.04 RCW, 49.17 RCW and WAC 296-155-650. Bidder must include a lump sum dollar amount in blank above (even if the value is \$0.00) to be responsive.

2) BID ALTERNATES (*Specify whether additive or deductive*)

| | | |
|-----|-------|----------|
| (1) | _____ | \$ _____ |
| (2) | _____ | \$ _____ |
| (3) | _____ | \$ _____ |
| (4) | _____ | \$ _____ |
| (5) | _____ | \$ _____ |
| (6) | _____ | \$ _____ |

Do not include Washington State Sales Tax in alternate amounts.

The Owner reserves the right to accept or reject any or all bid prices within sixty (60) days of the bid date.

Time for Completion

The undersigned hereby agrees to complete all the work under the Base Bid (and accepted alternates) within _____ calendar days after the date of Notice to Proceed.

Project Name: L&J Fire Alarm Replacement Project Project No.: 31-2100

Name of Firm: _____

UNIT PRICES (Where applicable) (Do not include Washington State Sales Tax)

| Item No. | Unit Description | Estimated Quantities | Additive Unit Price | Deductive Unit Price | Unit Per Measurement |
|----------|------------------|----------------------|---------------------|----------------------|----------------------|
| 1. | | | \$ | \$ | |
| 2. | | | \$ | \$ | |
| 3. | | | \$ | \$ | |
| 4. | | | \$ | \$ | |
| 5. | | | \$ | \$ | |

The above unit prices shall be for any additive and deductive work within 15% of the above estimated quantities. The unit price shall include full compensation for the cost of labor, materials, equipment, overhead, profit and any additional costs associated with the unit bid.

The Owner reserves the right to accept or reject any or all unit prices within sixty (60) days of the bid date.

Subcontractor Listing – RCW 39.30.060

If the base bid and the sum of the additive alternates is one million dollars or more the bidder shall provide names of the subcontractors with whom the bidder will **directly** subcontract for performance of the following work. If the bidder intends to perform the work, the bidder must enter its name for that category of work.

The bidder shall not list more than one subcontractor for each category of work identified UNLESS subcontractors vary with bid alternates, in which case the bidder must indicate which subcontractor will be used for which alternate.

Failure of the bidder to submit the NAMES of such subcontractors or to name itself to perform such work shall render the bidder's bid nonresponsive and, therefore, void.

| <u>Designated Work</u> | <u>Firm Name</u> |
|--|------------------|
| 1. Heating Ventilation Air Conditioning (HVAC) | _____ |
| 1.a. HVAC Alternate Bid # _____ (if applicable) | _____ |
| 2. Plumbing | _____ |
| 2.a. Plumbing Alternate Bid # _____ (if applicable) | _____ |
| 3. Electrical | _____ |
| 3.a. Electrical Alternate Bid # _____ (if applicable) | _____ |

Bidder may attach a separate sheet for additional alternate bid subcontractors.

Project Name: L&J Fire Alarm Replacement Project Project No.: 31-2100

Name of Firm: _____

Apprenticeship Requirements

The apprentice labor hours required for this project are 15 % of the total labor hours. The undersigned agrees to utilize this level of apprentice participation. Voluntary workforce diversity goals for this apprentice participation are identified in the Instructions To Bidders and Supplemental Conditions.

Liquidated Damages

The undersigned agrees to pay the Owner as liquidated damages the sum of \$_____ for each consecutive calendar day that is in default after the Contract Time. Liquidated damages shall be deducted from the contract by change order.

Receipt of Addenda

Receipt of the following addenda is acknowledged:

| | |
|-------------------|-------------------|
| Addendum No. ____ | Addendum No. ____ |
| Addendum No. ____ | Addendum No. ____ |
| Addendum No. ____ | Addendum No. ____ |

Name of Firm _____

NOTE: If bidder is a corporation, write State of Incorporation; if a partnership, give full names and addresses of all parties below.

Signed by _____, Official Capacity ____

Print Name _____

Address _____

City _____ State _____ Zip Code _____

Date _____ Telephone _____ FAX _____

State of Washington Contractor's License No. _____

Federal Tax ID # _____ e-mail address: _____

BOCC AGENDA ITEM SUMMARY

Resolution:

BOCC Meeting Date: March 16, 2021

Suggested Wording for Agenda Item:

Agenda Type: Legal Notice

Call for Bids for the L&J Fire Alarm Replacement Project

Contact: Doug Carey

Phone: 3607401337

Department: IS - Internal Services (including SWWF and Facilities)

Description:

Call for Bids for L&J Fire Alarm Replacement Project

Approvals:

User

Status

PA's Office

Approved

Publication Requirements:

Publications:

The Chronicle March 18 & 25

Additional Copies:

Cover Letter To: