



# Lewis County 2045

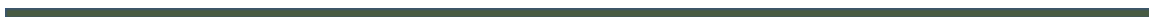
*Shaping the Future of Lewis County*



## Comprehensive Plan Periodic Update

Volume 2

Zoning Designations



## **Acknowledgements**

### **Lewis County Staff**

Ryan Barrett, County Manager

Mindy Brooks, Community Development Director

Geoff Soderquist, Public Works Director

Wes Anderson, County Engineer

Mike Kroll, Transportation Planner

Meja Handlen, Public Health and Social Services Director

John Abplanalp, Public Health and Social Services Deputy Director

Alex Murray, Capital Facilities Manager

Erika Katt, Emergency Management Planner

Matt Hyatt, GIS Manager

Gary Hurley, GIS Supervisor

### **Kimley-Horn Consultants**

Clay White, Project Manager, Director of Planning

Erin O'Kelley, Long-Range Planner

Joel Farias, Land Use Planner

Brad Lincoln, Transportation Advisor

Heidi Rous, Climate Advisor

Denise Truong, Climate Planner

Alice Cao, Climate Planner

Olivia Bitten, Community Engagement Planner

Makena Gove, Policy Analyst

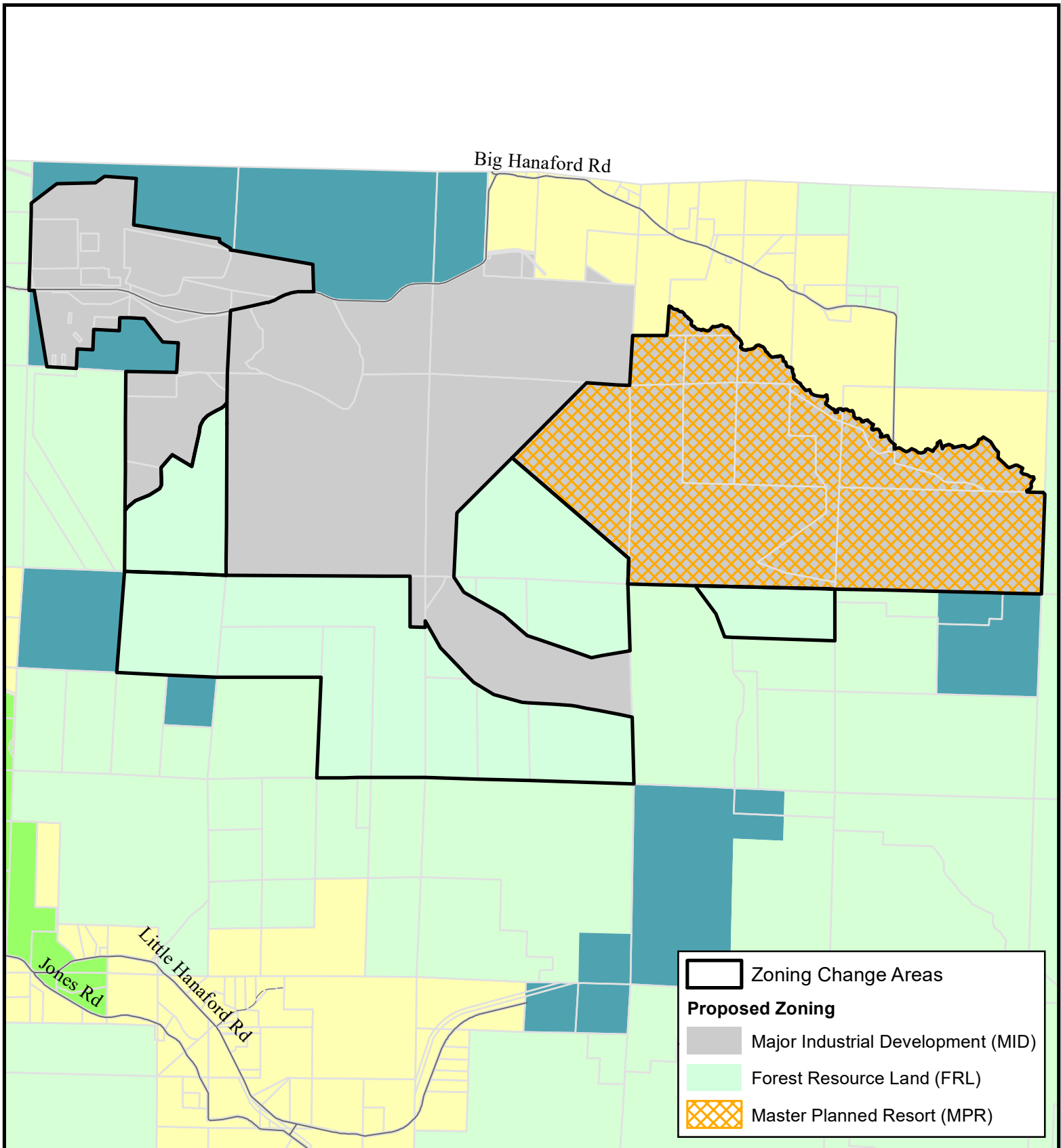
### **Facet Consultants**

Dan Nickel, Director of Planning

Nell Lund, Senior Environmental Planner

## Table of Contents

Page 1	North Lewis County - TransAlta
Page 2	North Lewis County – City of Centralia
Page 3	South Lewis County – City of Napavine
Page 4	South Lewis County – City of Toledo Urban Reserve
Page 5	Central Lewis County – City of Mossyrock
Page 6	Central Lewis County – Onalaska UGA
Page 7	East Lewis County – Packwood UGA
Page 8	East Lewis County – Thompson Road MPR
Page 9	East Lewis County – Skate Creek Park



**IPAT/TransAlta**

## Recommended Zoning Designations

— Highway 12

— Roads

□ Parcels

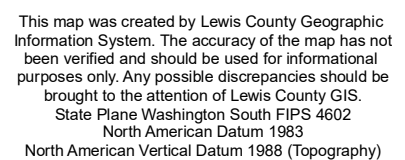


Updated 09/02/2025

Planning Division, Community Development

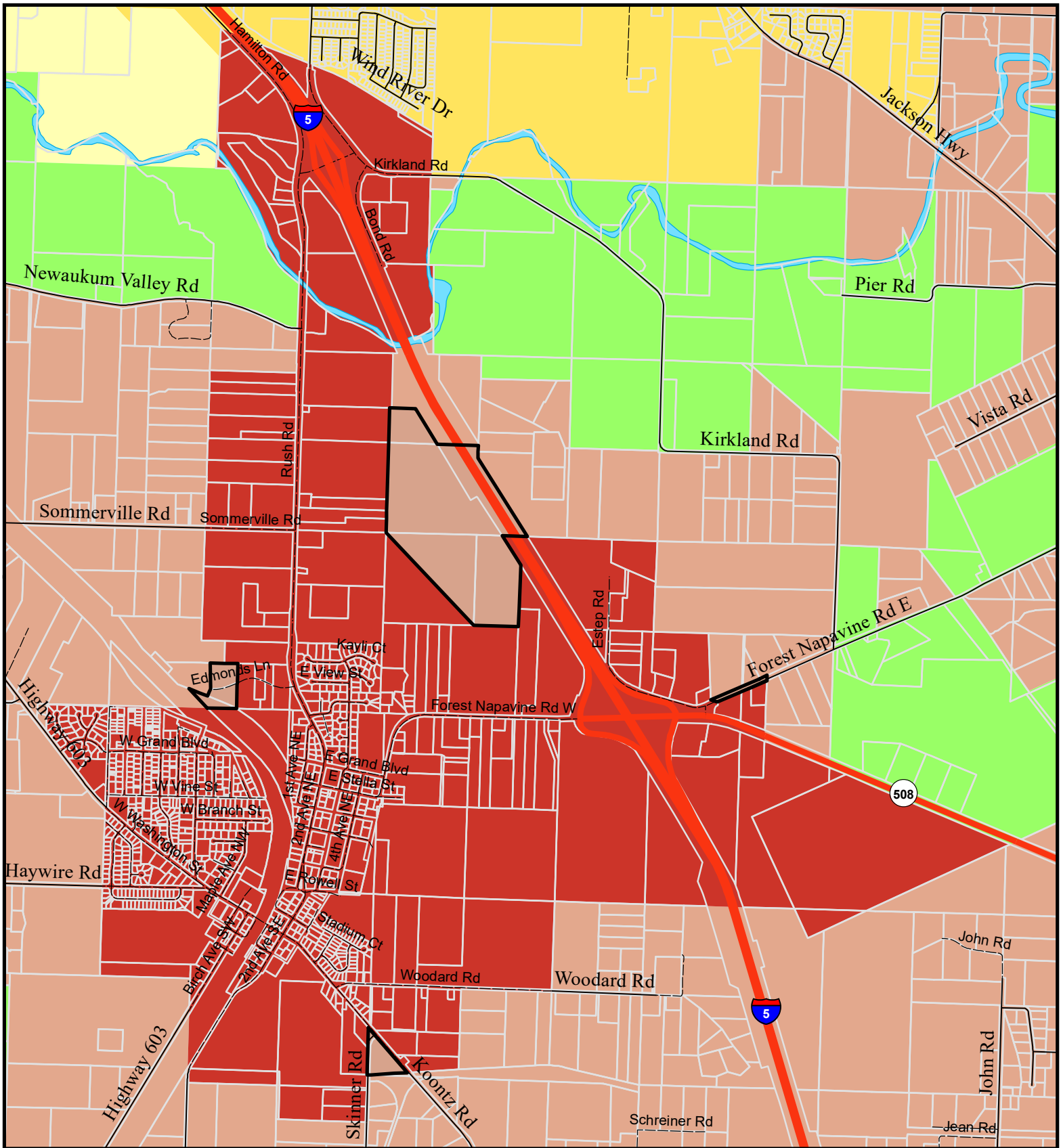


This map was created by Lewis County Geographic Information System. The accuracy of the map has not been verified and should be used for informational purposes only. Any possible discrepancies should be brought to the attention of Lewis County GIS.  
State Plane Washington South FIPS 4602  
North American Datum 1983  
North American Vertical Datum 1988 (Topography)





**Toledo  
Urban Reserve  
Recommended  
Zoning Designations**



# Urban Growth Area Napavine

## Recommended Zoning Designations

Zoning Change Areas

### Proposed Zoning

Rural Development District (RDD-5)

Highway 12

Roads

Parcels

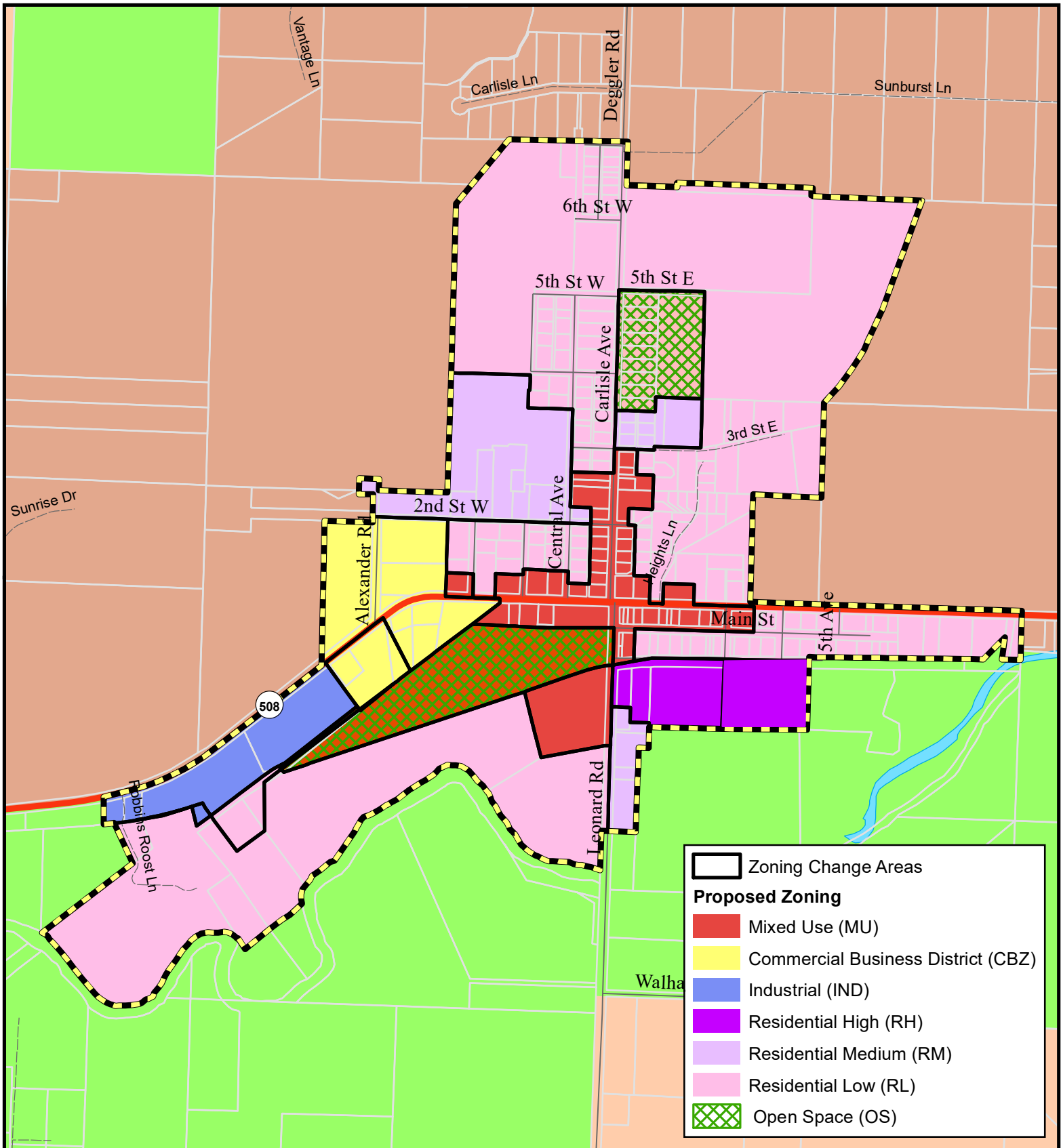
0 0.15 0.3 0.6  
Miles



This map was created by Lewis County Geographic Information System. The accuracy of the map has not been verified and should be used for informational purposes only. Any possible discrepancies should be brought to the attention of Lewis County GIS.  
State Plane Washington South FIPS 4602  
North American Datum 1983  
North American Vertical Datum 1988 (Topography)

Updated 09/02/2025

Planning Division, Community Development



## Onalaska Subarea Plan

### Recommended Zoning Designations

- Urban Growth Area
- Highway 12
- Roads
- Parcels

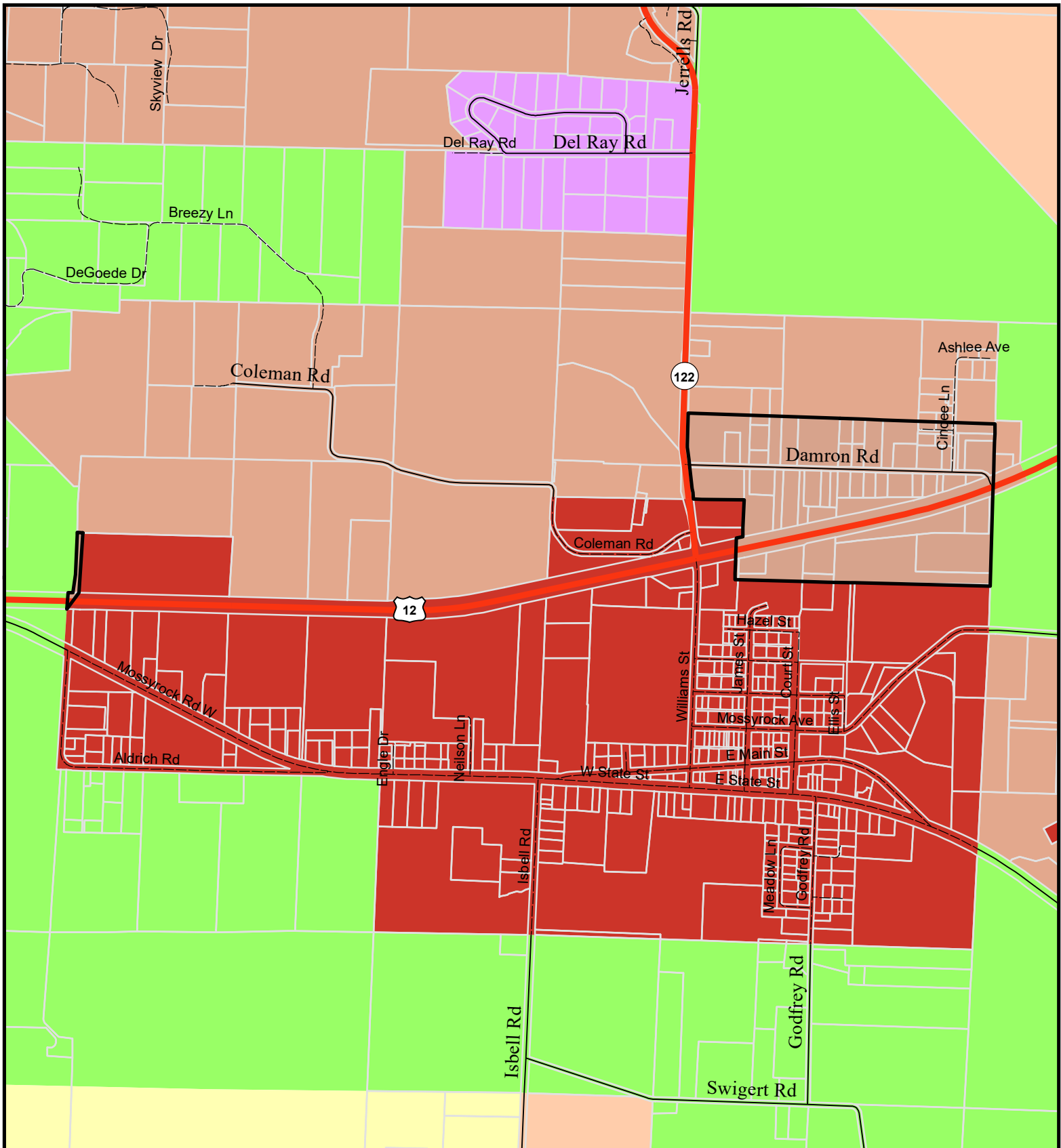


Updated 09/02/2025  
Planning Division, Community Development



This map was created by Lewis County Geographic Information System. The accuracy of the map has not been verified and should be used for informational purposes only. Any possible discrepancies should be brought to the attention of Lewis County GIS.  
State Plane Washington South FIPS 4602  
North American Datum 1983  
North American Vertical Datum 1988 (Topography)






## Urban Growth Area Mossyrock


### Recommended Zoning Designations

Updated 09/02/2025


Planning Division, Community Development

 Zoning Change Areas

#### Proposed Zoning

 Rural Development District (RDD-5)

 Highway 12

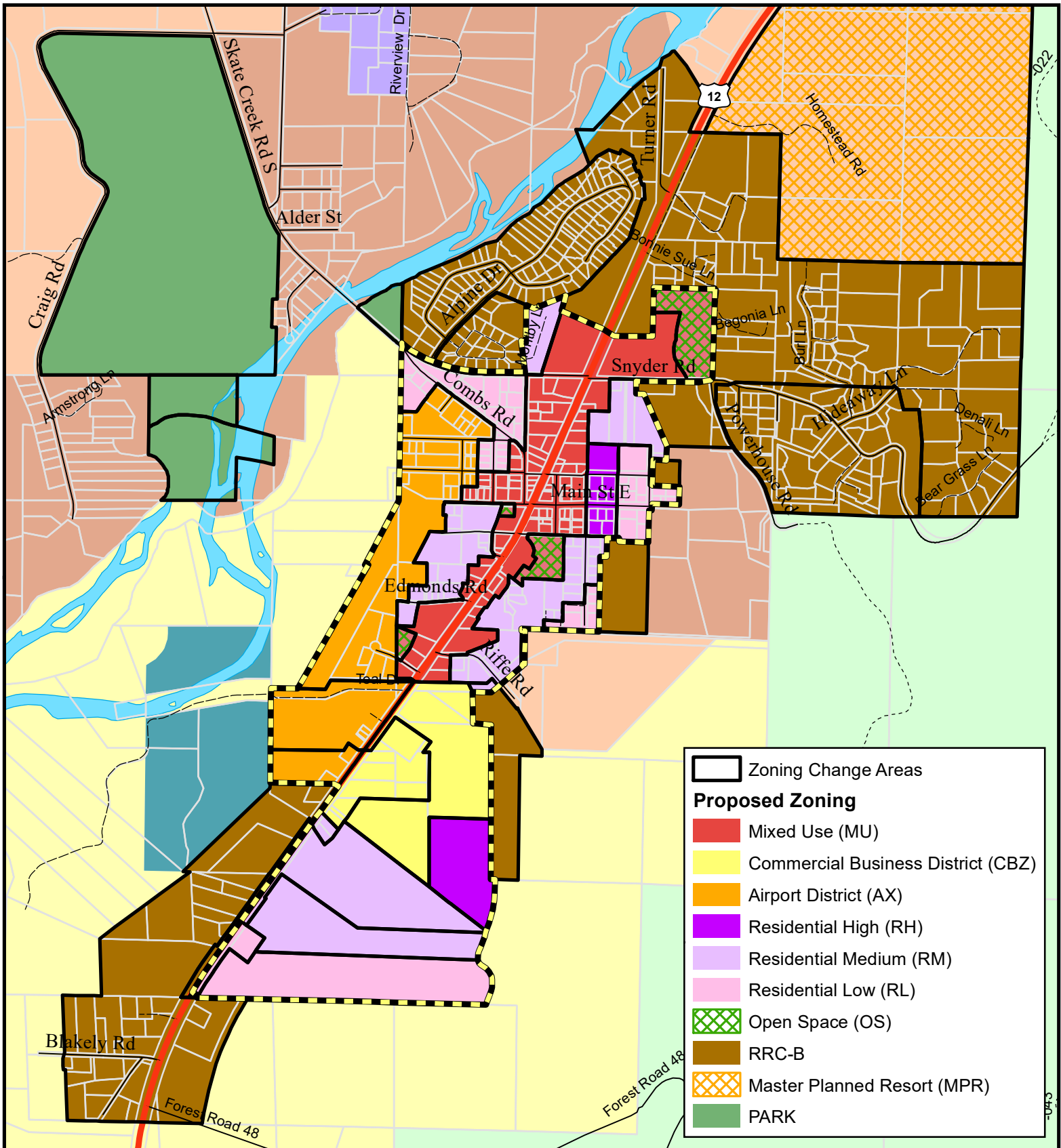
 Roads

 Parcels

0 0.1 0.2 0.4 Miles 



This map was created by Lewis County Geographic Information System. The accuracy of the map has not been verified and should be used for informational purposes only. Any possible discrepancies should be brought to the attention of Lewis County GIS.  
State Plane Washington South FIPS 4602  
North American Datum 1983  
North American Vertical Datum 1988 (Topography)



## Packwood Subarea Plan

### Recommended Zoning Designations

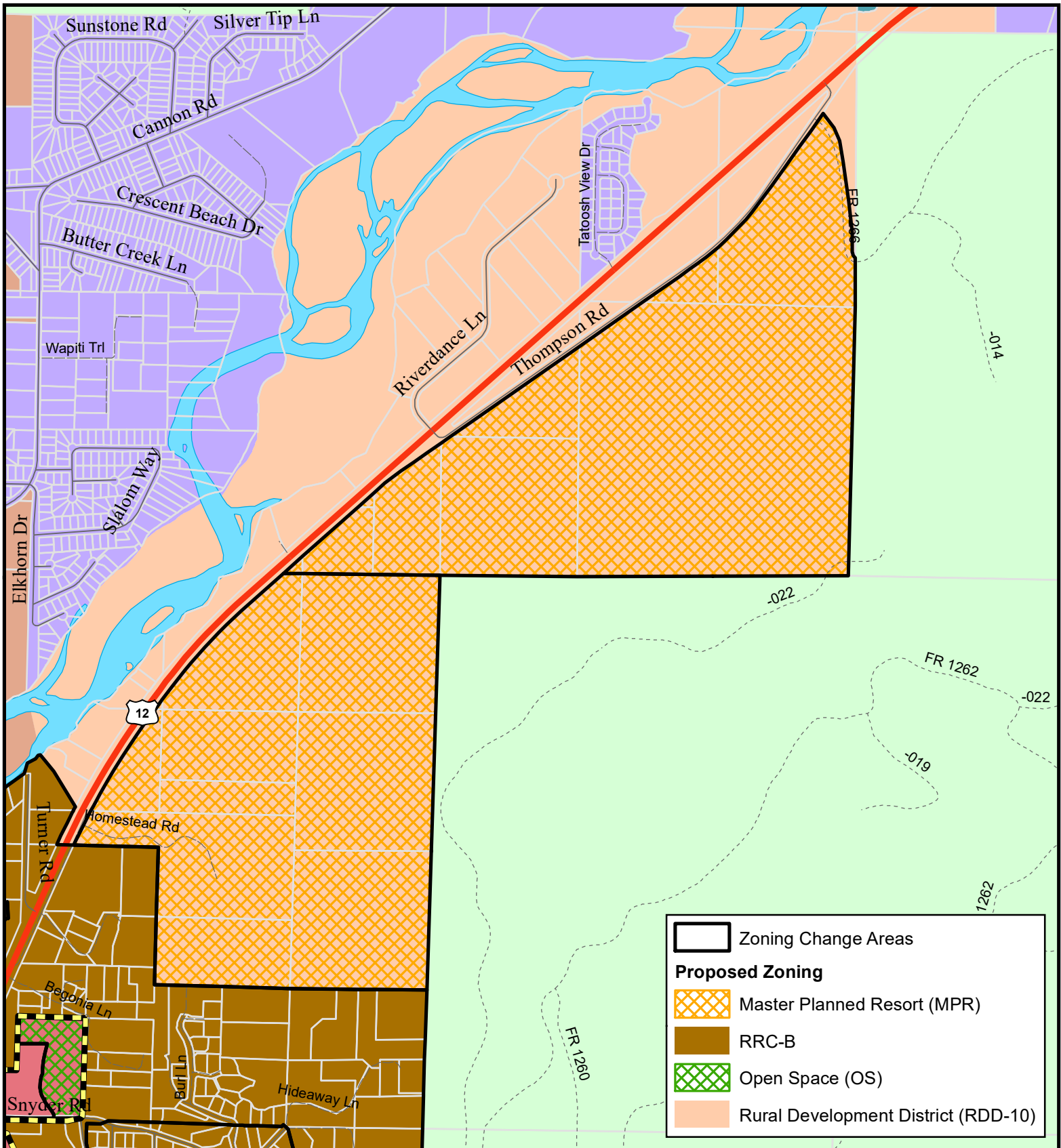
- Urban Growth Area
- Highway 12
- Roads
- Parcels



Updated 09/02/2025  
Planning Division, Community Development



This map was created by Lewis County Geographic Information System. The accuracy of the map has not been verified and should be used for informational purposes only. Any possible discrepancies should be brought to the attention of Lewis County GIS.  
State Plane Washington South FIPS 4602  
North American Datum 1983  
North American Vertical Datum 1988 (Topography)



## Master Planned Resort Thompson Road

### Recommended Zoning Designations

-  Urban Growth Area
-  Highway 12
-  Roads
-  Parcels

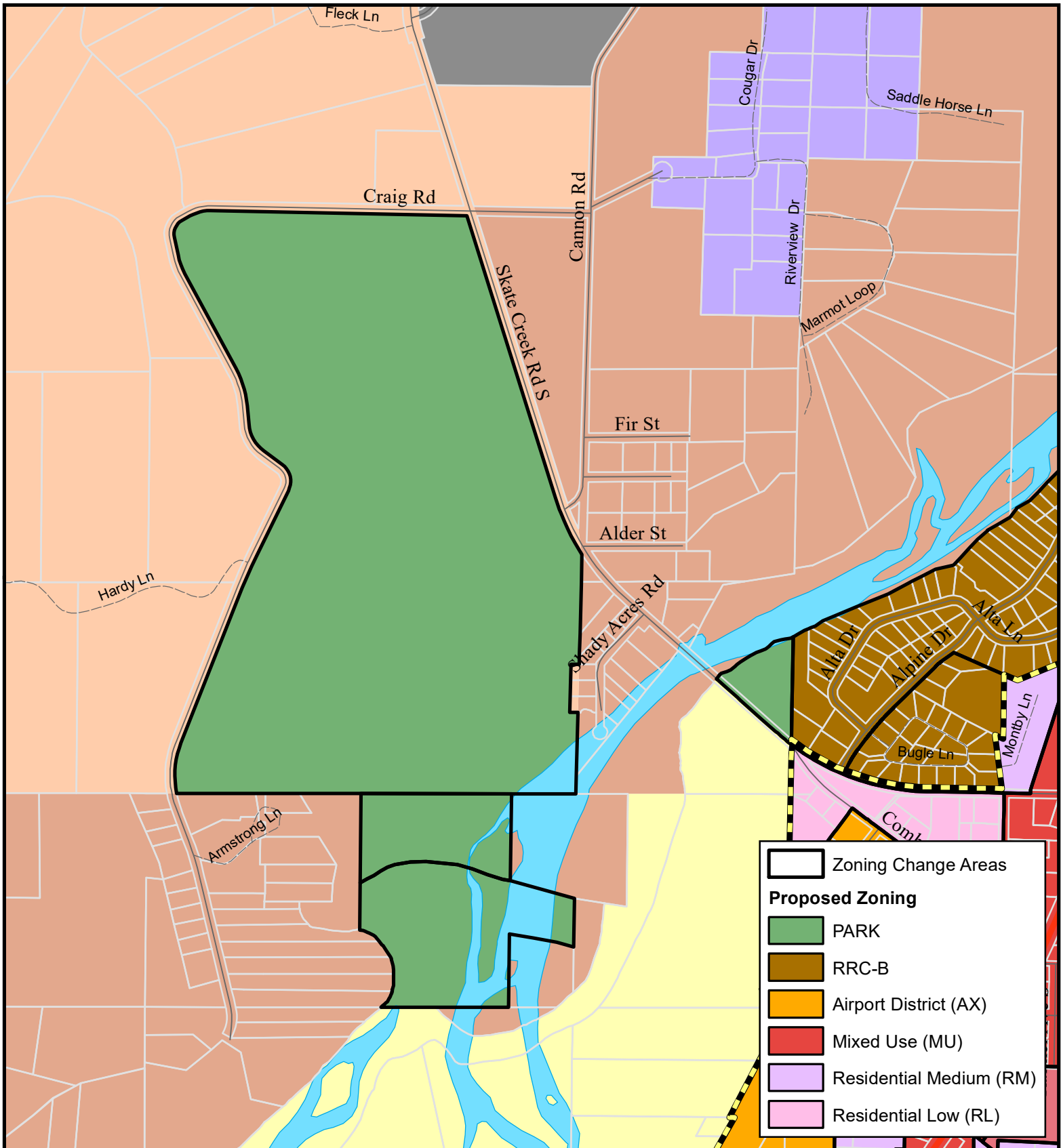


Updated 09/02/2025  
Planning Division, Community Development

0 0.1 0.2 0.4  
Miles



This map was created by Lewis County Geographic Information System. The accuracy of the map has not been verified and should be used for informational purposes only. Any possible discrepancies should be brought to the attention of Lewis County GIS.  
State Plane Washington South FIPS 4602  
North American Datum 1983  
North American Vertical Datum 1988 (Topography)



## Skate Creek Park & Cowlitz River Access

### Recommended Zoning Designations



Urban Growth Area



Highway 12



Roads



Parcels



This map was created by Lewis County Geographic Information System. The accuracy of the map has not been verified and should be used for informational purposes only. Any possible discrepancies should be brought to the attention of Lewis County GIS.  
State Plane Washington South FIPS 4602  
North American Datum 1983  
North American Vertical Datum 1988 (Topography)

Updated 09/02/2025

Planning Division, Community Development

0 0.05 0.1 0.2 Miles





**This page is intentionally blank.**



# Lewis County 2045

---

*Shaping the Future of Lewis County*

VOLUME 1 – Comprehensive Plan

VOLUME 2 – Zoning Designations

VOLUME 3 – Development Regulations

VOLUME 4 – Critical Areas Ordinance (available October)

VOLUME 5 – Supporting Documents

<https://lewiscountywa.gov/departments/community-development/comprehensive-plan-and-development-regulation-amendments/comprehensive-plan-periodic-update/>