



Lewis County 2045

Shaping the Future of Lewis County

Public Engagement Results

Updated November 2024

Table of Contents

Contents

Table of Contents.....	2
Lewis County 2045 Engagement Overview.....	3
Second Community Survey October 2024.....	5
Three Open Houses October 2024.....	8
Climate Engagement Event April 2024.....	9
Community Meetings.....	10
First Community Survey March to May 2024.....	13
Planning Commission and Board of County Commissioners.....	16
Appendices.....	17
Appendix A. Public Notifications.....	17
Appendix B. October Survey Results.....	21
Appendix B. Open House Public Comments & Questions.....	29
Appendix B. October Open House Posters.....	30
Appendix C. Pop-Up Events Posters.....	31
Appendix C. First Community Survey Results.....	34

Lewis County 2045 Engagement Overview

The Lewis County 2045 Engagement Summary Report serves as a means of reporting back to the community and stakeholders regarding the outcomes of the engagement efforts initiated as part of the County's Comprehensive Engagement Plan, which was adopted in Spring 2024.

The primary purpose of this report is to:

- **Provide Results:** It summarizes the findings from the public and stakeholder engagement activities conducted throughout the planning process, including surveys, workshops, meetings, and other outreach efforts. These results reflect community input and feedback on key issues, priorities, and concerns related to the county's future.
- **Foster Transparency:** The report ensures transparency by communicating how the engagement activities were carried out and what was learned from the community's involvement. This fosters trust and accountability by showing that the public's voice is being heard and considered in shaping the county's long-term planning efforts.
- **Guide Decision-Making:** By sharing the results of the engagement, the report informs the decision-making process as the county moves forward with the development of the 2045 planning framework. The engagement insights help shape policies, strategies, and actions that will guide the county's development, growth, and future planning.

The community engagement goals are to:

- Engage with stakeholders early in the planning process.
- Understand community character, what makes Lewis County special.
- Build long-term, collaborative working relationships with community partners and stakeholders.
- Capture community vision.
- Balance state law and with community vision.
- Clearly communicate how feedback is used.
- Engage with the community in its full diversity to promote inclusivity.


Lewis County 2045 General Engagement Schedule

The following schedule was adopted as part of the County’s Community Engagement Plan.

TASK	Building Community Vision and Develop Draft Plan				Review the Draft Plan			Incorporate Comments into Plans			Public Hearings and Adoption Process					
	2024												2025			
	MAR	APR	MAY	JUN	JUL	AUG	SEP	OCT	NOV	DEC	JAN	FEB	MAR	APR	MAY	JUN
Survey																
Webpage																
Social Media																
Engagement Summaries																
Education Materials																
Pop-Ups																
Community Events																
Community Meetings																
Presentations at Public Meeting																
Translation																


Lewis County 2045 Roles and Responsibilities

The following roles and responsibilities were identified in the County’s Community Engagement Plan.




Community Feedback

The community represents a broad spectrum of ideas, opinions, goals and values. These groups may include landowners, residents, community associations, special interest groups, advocacy groups and more.




Work by County Staff

Professional staff with technical expertise and knowledge about the planning process. These individuals act as advisors to the Planning Commission and Board of County Commissioners. Consultants sometimes are hired on a limited basis to provide technical assistance.



Planning Commission

Appointed volunteers with legal responsibility to review plans and project. Responsible to make recommendations to elected officials to guide decision to adopting the comprehensive plan update.



Board of County Commissioners

Elected officials that set policy, make decisions on plans, adopt ordinances, and approve budgets. This group will hear progress updates throughout the update process. Presentations to this group will detail how community feedback is used.

Second Community Survey October 2024

Between October 11th, 2024, to October 31st, 2024, a second community survey was distributed to the community. This survey presented high level summaries of key policies directions proposed in the draft comprehensive plan and asked respondents to share whether they agreed or disagreed with the proposed policies. This survey was accompanied by three in-person open houses. The goal for Lewis County was to provide in-person opportunities to come and ask questions about policies and then complete the survey to share additional thoughts.

Survey Goals

- Inform about the changes to policies from the last periodic update.
- Be transparent with the community.
- Educate people on all topics of the Comprehensive Plan.
- Provide a way to share feedback on specific policy issues and not overarching thoughts.

Results Summarized

- 50 Responses collected.
- 80 Written comments submitted.

Top Three Most Supported Policies By Element

Land Use		
<i>Preserve (no change to) existing rural character, uses, and densities</i>	<i>Support and grow local farming opportunities in agricultural resource lands</i>	<i>Create policies to protect communities from natural hazards in urban growth areas</i>
Housing		
<i>Improve permit processes and establish clear regulations for housing development</i>	<i>Increase middle housing, manufactured housing, and ADUs</i>	<i>Create policies to protect Provide housing types in Lewis County for all incomes, as required by the state.</i>
Transportation		
<i>In small towns and LAMIRDs, increase opportunities for transportation for low-income, disabled, or other disadvantaged populations.</i>	<i>In small towns and LAMIRDs, combine walking, biking, transit, roads and ADA facilities and create a multi-modal transportation network</i>	<i>Prioritize improvements to transportation networks vulnerable to natural hazards and disasters</i>

Most supported is defined by the policies with the most “strongly agreed” and then the most “agreed” responses in descending order.

Top Three Most Supported Policies By Element

Capital Facilities and Utilities		
<i>Coordinate for new projects and improvements to broadband and other telecommunications</i>	<i>Protect facilities and services from natural hazards</i>	<i>Expand park networks, explore options for connections between communities</i>
Economic Development		
<i>Expand telecommunications</i>	<i>Integrated economic development policies into the land use, transportation, and climate and resiliency elements to promote economic growth and economic resilience</i>	<i>Support transition of IPAT/TransAlta from mining to other industrial uses and explore options for new industrial</i>
Climate and Resiliency		
<i>Ensure wildfire planning is continued</i>	<i>Provide education on wildfire preparedness and property maintenance</i>	<i>Enhance protection of areas vulnerable to wildfires</i>

Most supported is defined by the policies with the most “strongly agreed” and then the most “agreed” responses in descending order.

Summary of written responses:

- Strong support for rural preservation and focusing growth and development in the appropriate areas.
- Controlling and/or limiting VRBOs and Short-term rentals.
- Mixed feelings or negative feelings towards alternative electric vehicles.
- Support for broadband.
- Request for diverse industries that provide living wage jobs that keep people living in Lewis County and able to afford housing.
- Consider that as industrial or economic opportunities grow what might impacts to tourism and recreation and Lewis County’s scenic beauty.
- Comment expresses the concern that new policies will implement new regulations and other impacts to taxpayers.

Demographics

Further details about demographics for this survey can be found in the appendix.

What best describes you?

Select all that apply.

90.48%

I live in Lewis County.

50.00%

I work in Lewis County

76.19%

I own property in Lewis County

28.57%

I own or operate a business in Lewis County.

2.38%

I am a visitor of Lewis County.

If you live in Lewis County, based on the map below, what District do you live in?



A 14.63%

B 19.51%

C 65.85%

Three Open Houses October 2024

Early October 2024 Lewis County hosted three open houses in three separate locations across the County. The open houses were hosted in multiple locations and times to provide more opportunities for residents to have the opportunity to attend.

The Open House was a self-guided format, attendees could walk around and read the posters at their own pace. Staff were available to answer any questions. There was no formal presentation at these open houses.

Attendees could provide comments via verbal with staff or submitted written comments. Paper surveys, pens, tables and chairs were provided for attendees to write down their thoughts on proposed policy changes.

Open House Goals:

- Inform about the changes to policies from the last periodic update.
- Be transparent with the community.
- Educate people on all topics of the Comprehensive Plan.
- Provide a way to share feedback on specific policy issues and not overarching thoughts.

Results:

The open house had approximately 5 attendees that discussed policy changes with staff. The following comments were collected:

- Multiple comments mentioned the need for increased transit in rural areas to assist with Lewis County rural and low-income populations.
- Multiple comments expressed the need for new job creation to keep younger populations living in rural communities with their families.
- Multiple comments mentioned the support for hazard mitigation and natural hazard preparedness policies.
- Multiple comments mentioned that need for stronger regional coordination between cities and small communities. The cities, Centralia and Chehalis, produced the better jobs while the rural communities are where residents would like to continue living. There was a strong desire to be able to live and work in the same place.

Open Houses for Comprehensive Plan Update

What's the plan for housing?

What's the plan for transportation?

What's the plan for addressing floods & wildfires?

Come to an open house to learn more and share your thoughts and ideas!

Chehalis Open House

October 10, 2024

3:00PM - 5:00PM

Location: Adna Grange,
123 Diekman Rd,
Chehalis

Mineral Open House

October 11, 2024

3:00PM - 5:00PM

Location: Mineral Lions
Club, 108 E Front St,
Mineral

Randle Open House

October 12, 2024

12:00PM - 2:00PM

Location: Randle Fire
Station, 9978 US
Highway 12, Randle

Visit lewiscountywa.gov to learn more.
Survey will be available online after
October 10th!



Lewis County 2045

Shaping the Future of Lewis County



Climate Engagement Event April 2024

Introduction

This event was hosted by Centralia College as part of their “Climate Connections Film and Speakers Series”. Mindy Brooks was requested to speak about Lewis’s County’s Comprehensive Plan and the new start requirements regarding Climate Resiliency. The event was hybrid with in person and Zoom options.

Event Summary

The engagement event covered the following topics:

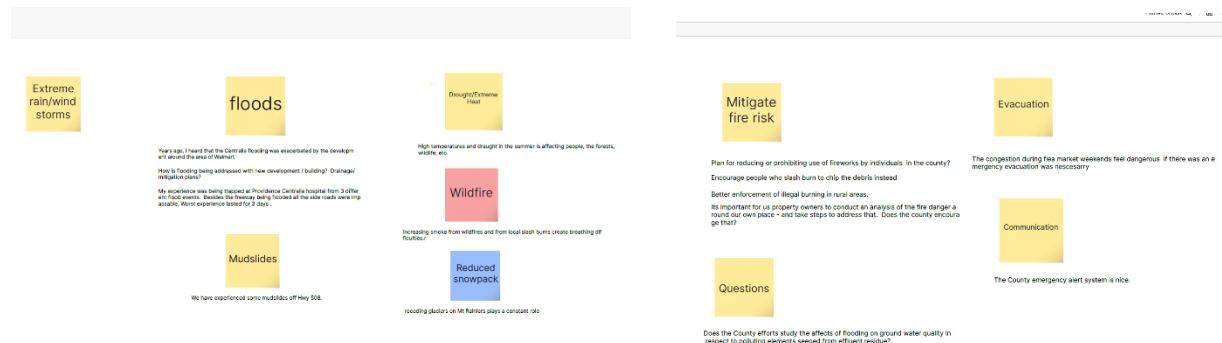
1. What is a comprehensive plan?
2. What is climate and resiliency planning?
3. How does climate change impact Lewis County?
4. Have you been impacted by natural disasters?

Engagement Outcomes

Key comments from the in-person discussion included the following:

- Flooding risks and river bank erosion
- Concerns about the response time to wildfires
- Logging impacts related to landslide hazards
- Evacuation routes and education
- Invasive plant species controls

Zoom comments are captured in the figures below:



Key Results



30 Attendees

Community Meetings

Introduction

October 2023 through January 2024, the County hosted four (4) community meetings to ask the public to help scope the highest priorities over the next 20 years. The meetings were held in South County near Toledo, Salkum, Mineral and Randle. A total of 86 people attended the meetings.

Event Summary

Each meeting began with an overview of the Comprehensive Plan Periodic Update (see handout) and questions from the attendees. Then there was a facilitated workshop with the prompting question “What is your vision for Lewis County in 20-years?” Participants were asked to write 5-10 statements about what they hope Lewis County will be like in 2045, covering topics such as transportation, housing, land use, recreation, jobs, etc. Next, participants were asked to star the top 3 priorities. The participants paired up and shared their top 3 priorities. Together, each team was asked to agree on a combined 3 and write each priority on a notecard. These were shared with the whole group and organized, by the group, into topics. The results of the workshop are provided below. Finally, staff shared the next steps which are to produce notes from this meeting and each of the upcoming community meetings throughout the county and post them on the webpage.

Engagement Outcomes

The comments from the meetings are summarized below. The top themes were:

1. Protect the rural character of the County by maintaining farms and forests and keeping dense development and big commercial near Interstate 5.
2. Make sure infrastructure and services (e.g., roads, EMS, police, schools, internet, etc.) keeps pace with development.

Land Use

- Maintain rural character.
- Preserve small family farms.
- Make sure small, unincorporated communities (LAMIRDS) that have existing neighborhoods and services like schools are sustainable long term.
- Ensure that high density housing is provided in cities and urban growth areas, protecting rural areas for lower density housing that matches rural character.
- Ensure that tiny home parks are located in appropriate areas where there are adequate facilities and services.
- Growth locally owned, small businesses and prevent larger corporations from overtaking the unique character of Lewis County.

Key Results



86
Attendees

Economic Development

- Maintain and grow the timber industry.
- Remove barriers to keeping small farms in agricultural production.
- Provide excellent broadband everywhere in Lewis County to support new jobs, particularly in East Lewis County.
- Enhance Highway 12 as a Scenic Byway by encouraging protection of farms and forests, and encourage development that creates a visually appealing drive and supports tourism.
- Balance new jobs with rural character by ensuring that new employment centers are based on rural economies (e.g., farms, tourism) and scaled appropriately.
- Zone more properties that front I-5 for commercial and industrial development and encourage new businesses along the I-5 corridor and at on/off ramps.
- Ensure that new green energy facilities provide economic benefit to Lewis County residents.

Housing

- Provide housing that meets the needs of the community.
- Increase the amount and diversity of affordable housing options.
- Provide senior housing options in East Lewis County.
- Encourage new housing developments to be located away from major transportation corridors or screened/buffered from transportation corridors using trees and shrubs.
- Consider capping property value/property tax for residents.

Infrastructure

- Ensure that public facilities and services (e.g. fire districts, EMS, school districts, etc.) plan for and can support new rural development.
- Support and grow rural schools and educational opportunities.
- Improve cell services and broadband.
- Increase policing services in East Lewis County.
- Expand recycling services throughout East Lewis County and add plastic recycling.
- Provide more trash removal on county roads.

Recreation and Environment

- Preserve Lewis County's history and support tourism related to history
- Maintain and improve recreational facilities, particularly facilities like Riffe Lake that are critical to tourism and the local economy.
- Protect rivers, streams and lakes, such as Mineral Lake, to maintain water quality and preserve the "natural state" of the shorelines.
- Create more public parks/open spaces with connected regional trail system.
- Provide more access to federal and state public lands.
- Support and increase local events and festivals.
- Protect natural resources and maintain habitat for wildlife.
- Work with the state and federal governments to properly manage forests for timber production and as wildlife habitat.

Natural Hazards

- Complete flood control measures that have been under discussion for many years.
- Increase flood protection and mitigation throughout the County.
- Have a coordinated response to wildfires; increase the level of service of fire districts.
- Propose Firewise or other fire-ready programs in East County.
- Provide more education about evacuation routes.

Transportation

- Provide transportation options for seniors, people with disabilities and others.
- Improve traffic flow and safety throughout Lewis County.
- Add center turn lanes to State Routes and County arterials as those roads pass through more densely developed areas.
- Increase public transit services, more frequent service and extended serve to South and East Lewis County.
- Work with the Federal Department of Transportation to add a third land to Interstate 5.

Other ideas

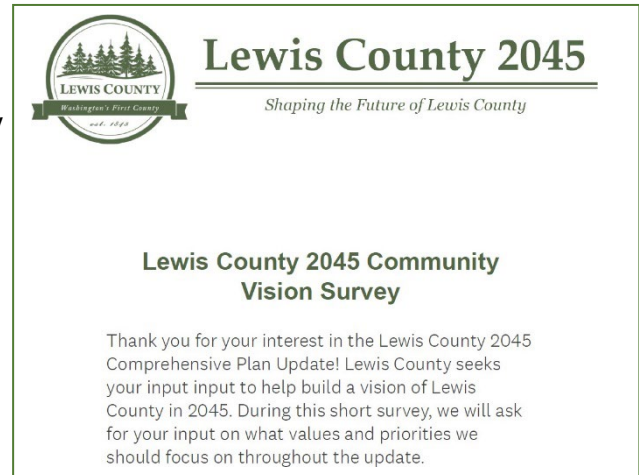
- Less “red tape” across the board so it is easier for people to do the development and land use they want to do.
- Move Fair Grounds to SE corner of Exit 63 and add Equestrian Center
- Provide an all-encompassing housing and treatment facility for homeless residents.



November 30, 2023 Community Meeting at Mineral American Legion Building

First Community Survey March to May 2024

On March 28, 2024, Lewis County launched the Community Vision Survey on its website. This survey remained open through May 10, 2024. The survey was publicized through the Board of County Commissioner Facebook Page and through the Lewis County 2045 email list, as well as at local meetings including the Realtor’s Lunch & Learn and Fire Chiefs monthly meeting.



Survey Goals

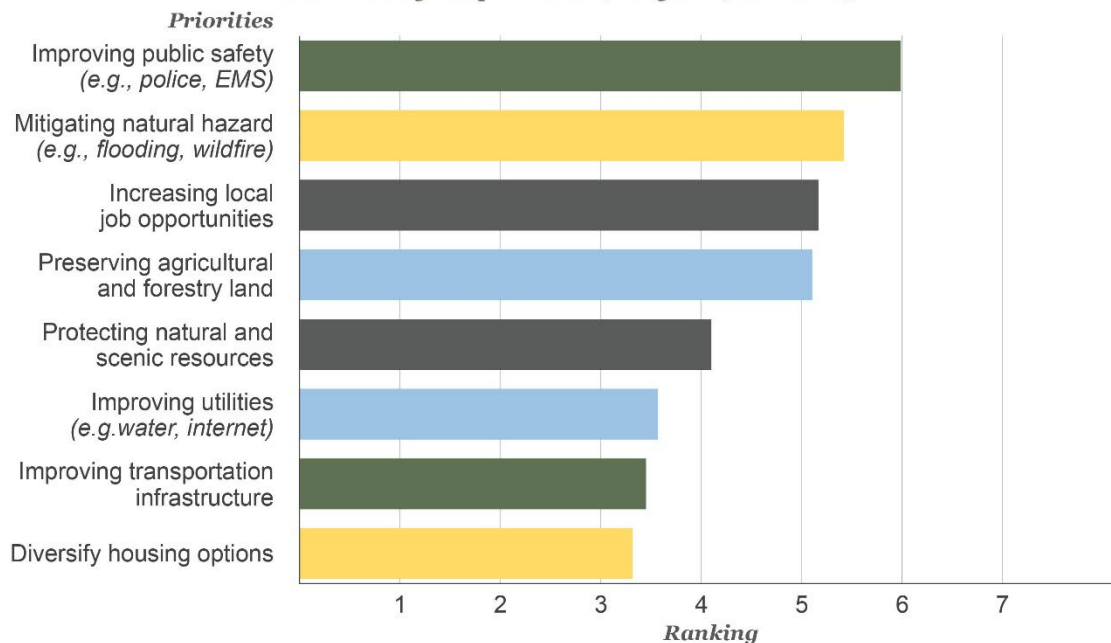
- Build awareness about the Comprehensive Update.
- Understand community priorities and values.
- Understand the community vision for Lewis County.
- Understand the overall satisfaction with the quality of life in Lewis County.

Survey Results

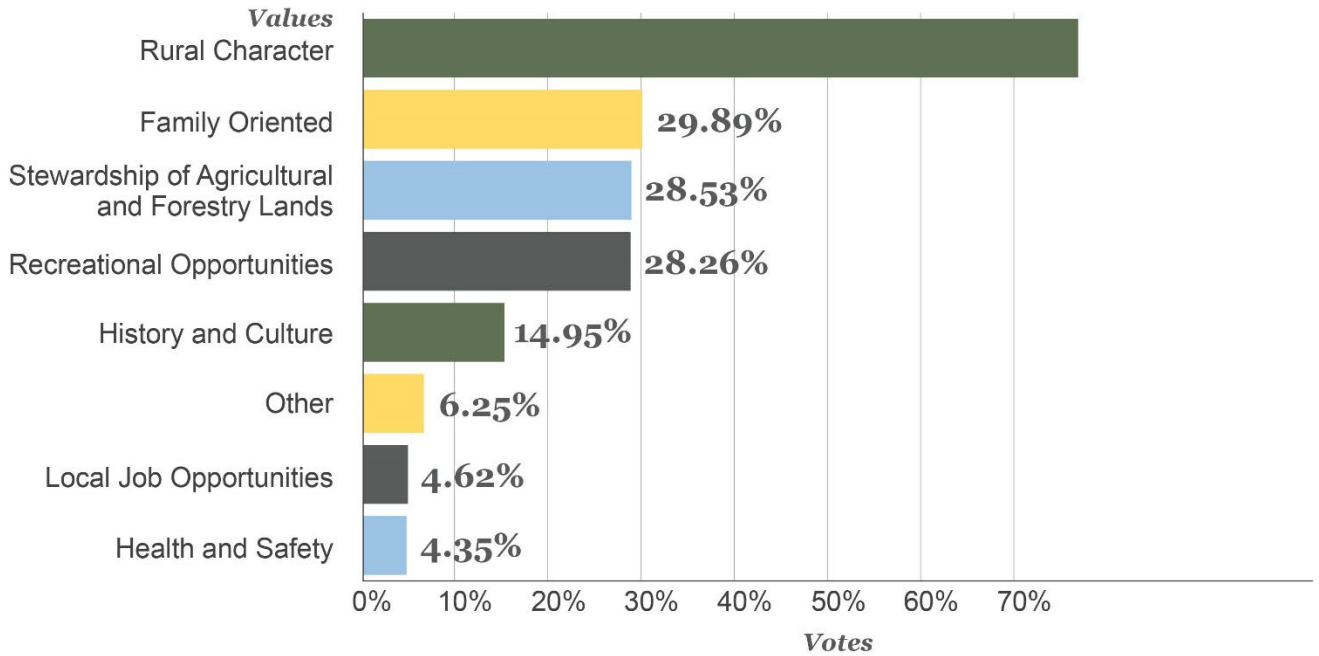
- 736 Responses
- 236 Signed up for Project Updates
- 566 Report feeling very satisfied or satisfied with the quality of life in Lewis County

What should Lewis County focus on over the next 20 years?

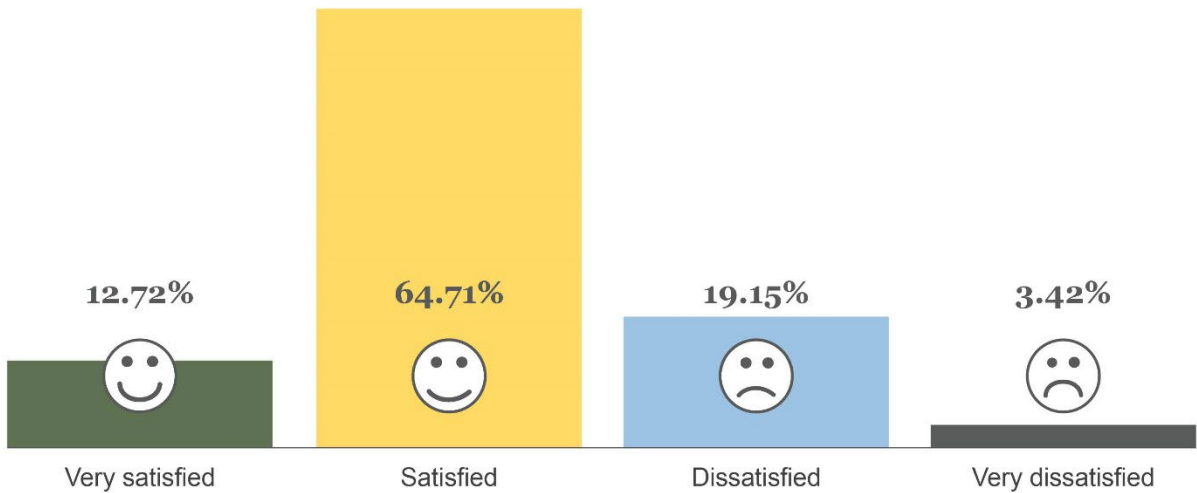
Please rank your priorities (1-highest; 8-lowest).



Pick two values that best describe Lewis County:



Are you satisfied with the quality of life in Lewis County?



Demographics

Further details about demographics can be found in the appendix.

What best describes you?

Select all that apply.

95.08%

I live in Lewis County.

1.37%

I don't live in Lewis County, but I work in Lewis County.

3.15%

I don't live in Lewis County, but I own property in Lewis County.

13.82%

I own or operate a business in Lewis County.

1.23%

I am a visitor of Lewis County.

If you live in Lewis County, based on the map below, what District do you live in?



A 24.76%

B 33.61%

C 40.94%

Planning Commission and Board of County Commissioners

Overview

Lewis County staff attend monthly meetings with local commissioners to provide updates on the Comprehensive Plan Periodic Update. All meetings are open to the public and include opportunities for the public to provide comments. Materials from the meetings are posted online on the respective commission webpages.

Staff attended the following meetings:

- January 17, 2024 – Planned Growth Committee – City Coordination
- February 13, 2024 – Lewis County Planning Commission – Overview
- February 21, 2024 – Planned Growth Committee – City Coordination
- March 12, 2024 – Lewis County Planning Commission – Community Engagement Plan
- March 20, 2024 – Planned Growth Committee – City Coordination
- March 26, 2024 – Lewis County Planning Commission – Community Engagement Plan
- April 4, 2024 – Planned Growth Committee – City Coordination
- April 23, 2024 – Lewis County Planning Commission – Land Capacity Analysis
- May 15, 2024 – Planned Growth Committee – City Coordination
- May 28, 2024 – Lewis County Planning Commission – Land Capacity Analysis
- June 25, 2024 – Lewis County Planning Commission – Housing Needs Assessment
- July 17, 2024 – Planned Growth Committee – City Coordination
- July 23, 2024 – Lewis County Planning Commission – Climate Risk Assessment
- August 13, 2024 - Lewis County Planning Commission – Population and Housing Allocations
- August 21, 2024 – Planned Growth Committee – City Coordination
- August 27, 2024 – Joint Lewis County Planning Commission & Board of County Commissioners Session – Priorities
- September 10, 2024 – Lewis County Planning Commission – Update
- September 18, 2024 – Planned Growth Committee – City Coordination
- September 24, 2024 – Lewis County Planning Commission – Population and Housing Allocations
- October 16, 2024 – Planned Growth Committee – City Coordination
- October 16, 2024 - Board of County Commissioners – Population and Housing Allocations
- October 22, 2024 – Lewis County Planning Commission – Update
- November 12, 2024 - Board of County Commissioners – Population and Housing Allocations
- December 10, 2024 – Lewis County Planning Commission – 2025 Adoption Schedule

Appendices

Appendix A. Public Notifications



Home / COMMUNITY DEVELOPMENT / REZONES / COMPREHENSIVE PLAN AND DEVELOPMENT REGULATION AMENDMENTS / COMPREHENSIVE PLAN PERIODIC UPDATE

COMMUNITY DEVELOPMENT

SERVICES

- Permit Apps And Handouts
- Current Planning Applications
- ✓ Rezones
- Comp Plan & Development Regulation Amendments
- Codes And Flood Regulations
- Maps And Data
- Adopted Plans
- * Boards & Commissions
- Staff Directory

CONTACT US

Community Development
125 NW Chehalis Ave
Chehalis, WA, 98532

General Line / Inspections: (360) 740-1133

Permit Center: 360-740-1146

Comprehensive Plan Periodic Update



Lewis County 2045

Shaping the Future of Lewis County

Take the survey to share your priorities for the next 20 years!

Beginning July 2023, Lewis County and all cities in the county are required by the Washington State Growth Management Act to update their comprehensive plans. Lewis County is coordinating this effort through the Planned Growth Committee. Updates will include changes to the zoning map and development regulations. The Comprehensive Plan sets goals and policies that impact all of Lewis County. The plan includes goals for housing, transportation, economic development, services (e.g., fire districts), land use and zoning, agriculture and forestry, recreation and the environment. The updates must be completed by June 2025.

- [Posters - Proposed Policy Changes](#)
- [Lewis County 2045 1-page Handout](#)
- [Lewis County 2024 1-page Handout \(Espanol\)](#)
- [Lewis County 2045 Frequently Asked Questions](#)
- [Lewis County 2045 Community Engagement Results](#)
- [2017 Comprehensive Plan](#)

Second community wide survey was posted on the [Lewis County 2045 Comprehensive Plan project webpage](#).

COMMUNITY DEVELOPMENT

SERVICES

- Permit Apps And Handouts
- Current Planning Applications
- Rezones
- Comp Plan & Development Regulation Amendments
- Codes And Flood Regulations
- Maps And Data
- Adopted Plans
- Boards & Commissions
- Staff Directory

CONTACT US

Community Development

Comp. Plan Open House - Mineral Lions Club

Friday, October 11, 2024 - 3 p.m. to 5 p.m.

Lewis County Community Development will host open house events throughout the county on Lewis County 2045. The purpose of the open house events is to hear from the public on the draft goals and policies related to land use, economic development, transportation, public safety and other important topics. The meetings will be held at:

- [Adna Grange](#): 123 Diekman Rd, Chehalis, 3:00pm-5:00pm
- [Mineral Lions Club](#): 108 E Front St, Mineral, 3:00pm-5:00pm
- [Randle Fire Station](#): 9978 US Highway 12, Randle, 12:00pm-2:00pm

The materials will be posted on the webpage <https://tinyurl.com/2m9j2cyr> before the first event. To receive updates about the Lewis County 2045 project, please subscribe to the [Lewis County Planning Announcements](#).

Staff Contact – Mindy Brooks, 360-740-2610 or mindy.brooks@lewiscountywa.gov

Share This



Posted: Friday, August 23, 2024 - 10:41 a.m.

Online Announcement for Miner Open House

COMMUNITY DEVELOPMENT

SERVICES

- Permit Apps And Handouts
- Current Planning Applications
- Rezones
- Comp Plan & Development Regulation Amendments
- Codes And Flood Regulations
- Maps And Data
- Adopted Plans
- Boards & Commissions
- Staff Directory

CONTACT US

Community Development

Comp. Plan Open House - Randle Fire Station

Saturday, October 12, 2024 - noon to 2 p.m.

Lewis County Community Development will host open house events throughout the county on Lewis County 2045. The purpose of the open house events is to hear from the public on the draft goals and policies related to land use, economic development, transportation, public safety and other important topics. The meetings will be held at:

- [Adna Grange](#): 123 Diekman Rd, Chehalis, 3:00pm-5:00pm
- [Mineral Lions Club](#): 108 E Front St, Mineral, 3:00pm-5:00pm
- [Randle Fire Station](#): 9978 US Highway 12, Randle, 12:00pm-2:00pm

The materials will be posted on the webpage <https://tinyurl.com/2m9j2cyr> before the first event. To receive updates about the Lewis County 2045 project, please subscribe to the [Lewis County Planning Announcements](#).

Staff Contact – Mindy Brooks, 360-740-2610 or mindy.brooks@lewiscountywa.gov

Share This



Posted: Friday, August 23, 2024 - 10:44 a.m.

Online Announcement for Randle Fire Station Open House

COMMUNITY DEVELOPMENT / EVENTS

COMMUNITY DEVELOPMENT

SERVICES

- Permit Apps And Handouts
- Current Planning Applications
- Rezones
- Comp Plan & Development Regulation Amendments
- Codes And Flood Regulations
- Maps And Data
- Adopted Plans
- Boards & Commissions
- Staff Directory

CONTACT US

Events

October 2024

SUN	MON	TUE	WED	THU	FRI	SAT
		1	2	3	4	5
6	7	8 Planning Commission	9	10 Comp. Plan Open House - Adna Grange	11 Comp. Plan Open House - Mineral Lions Club	12 Comp. Plan Open House - Randle Fire Station
13	14	15	16	17	18	19

Open houses were posted on the [Lewis County Community Development Events page](#).

ANNOUNCEMENTS / PROVIDE YOUR THOUGHTS ABOUT THE FUTURE ...

NEWS ROOM

PAGES

- News Room Home
- Press Releases
- Announcements
- County Events

Provide Your Thoughts about the Future of Lewis County



CHEHALIS - You're invited to provide your ideas for the future of Lewis County. A public meeting will be held at the Adna Grange, 123 Dieckman Rd. in Chehalis. There will more meetings in November and January throughout the county. Check the [Comprehensive Plan Periodic Update webpage](#) for additional meeting dates, times and locations. For more information, please contact Mindy Brooks at mindy.brooks@lewiscountywa.gov or sign up to receive [email notifications](#).

Posted: October 05, 2023



Online Announcement for the Adna Grange Open House

5-6pm Tuesday, April 2 Centralia College East & Online via Zoom	<p><i>Learn how carbon farming, regenerative agriculture, and climate smart practices all describe methods of farm management that sequester carbon and mitigate climate change, which has led to new policies, programs, and funding for farmers.</i></p> <p>Presenter: Dani Gelardi, Senior Soil Scientist and Climate Coordinator, Washington State Department of Agriculture</p>
6-7pm Tuesday, April 2 Centralia College East & Online via Zoom	<p>Carbon in Your Field</p> <p><i>This presentation will explain the benefits of reduced tillage or no-till farming, including growing cover crops, planting perennial crops, good livestock rotation practices and agroforestry.</i></p> <p>Presenter: Kenna Fosnacht, Education and Outreach Coordinator (Lewis County Conservation District)</p>
2:30-3:30pm Thursday, April 4 Centralia College East & Zoom	<p>Implementing Climate Resiliency Locally</p> <p><i>Washington state now requires local governments to implement new rules to address climate change. This workshop begins with an explanation of the new requirements followed by a discussion of local priorities as they relate to climate change.</i></p> <p>Presenter: Mindy Brooks, Long Range Planner (Lewis County)</p>
5pm Sunday, April 7	<p>Film: Kiss the Ground</p>

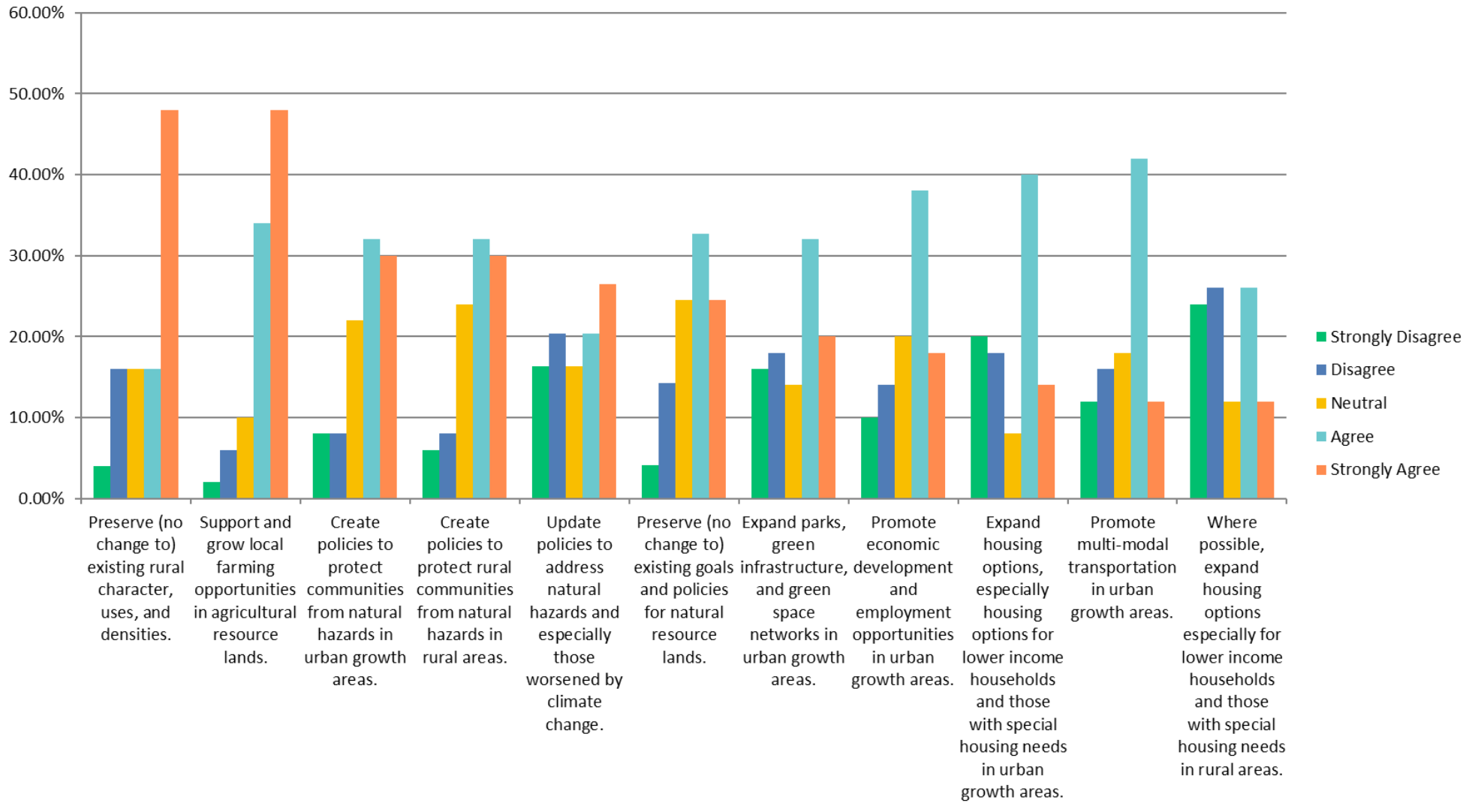
The Climate Engagement Event was advertised on the Centralia College website as part of the Climate Connections Film and Speaker Series.

Appendix B. October Survey Results

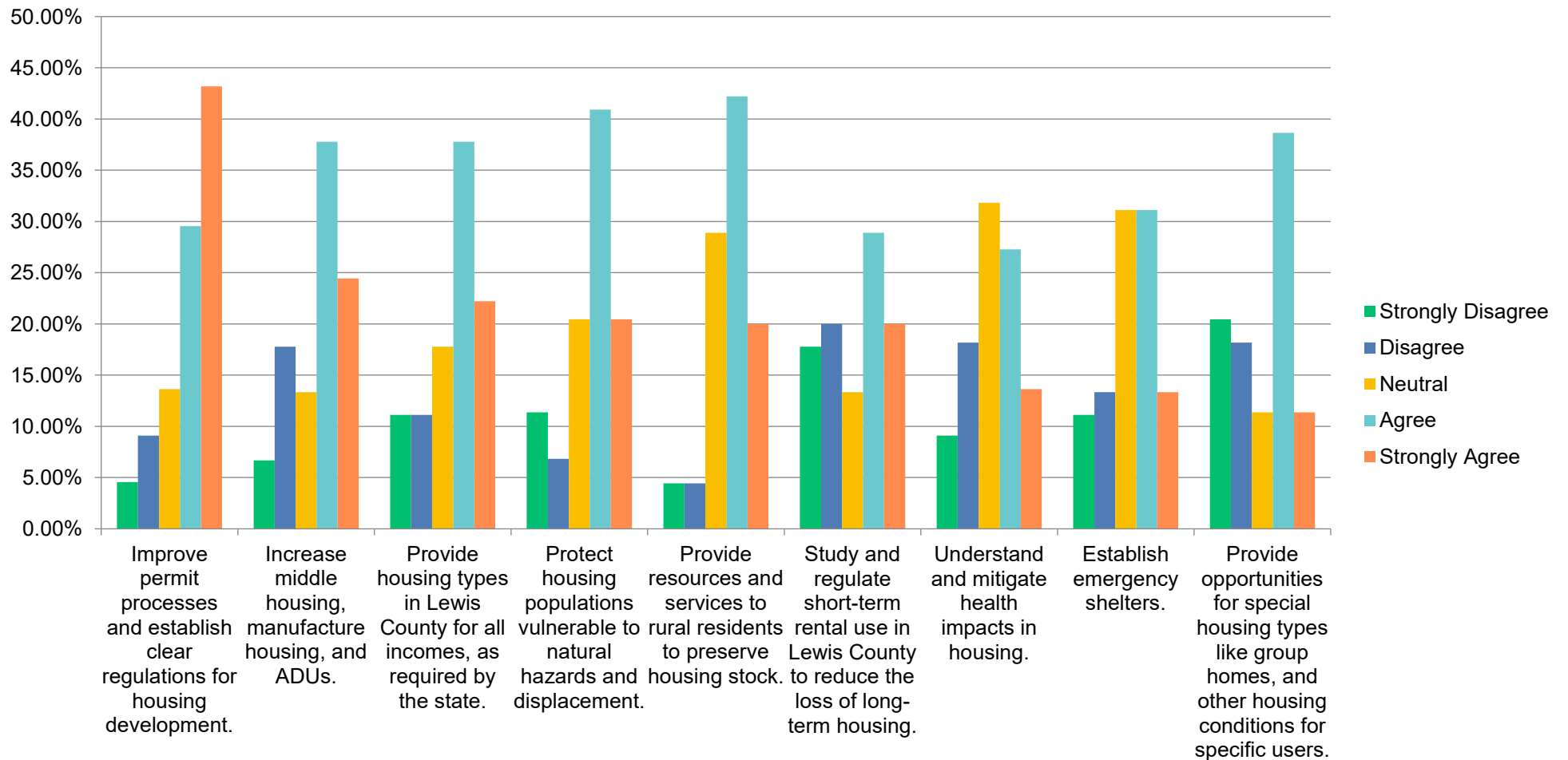
October Survey results start on the next page. Some survey results were combined on to one page to see overall trends.

Survey results were exported from SurveyMonkey.

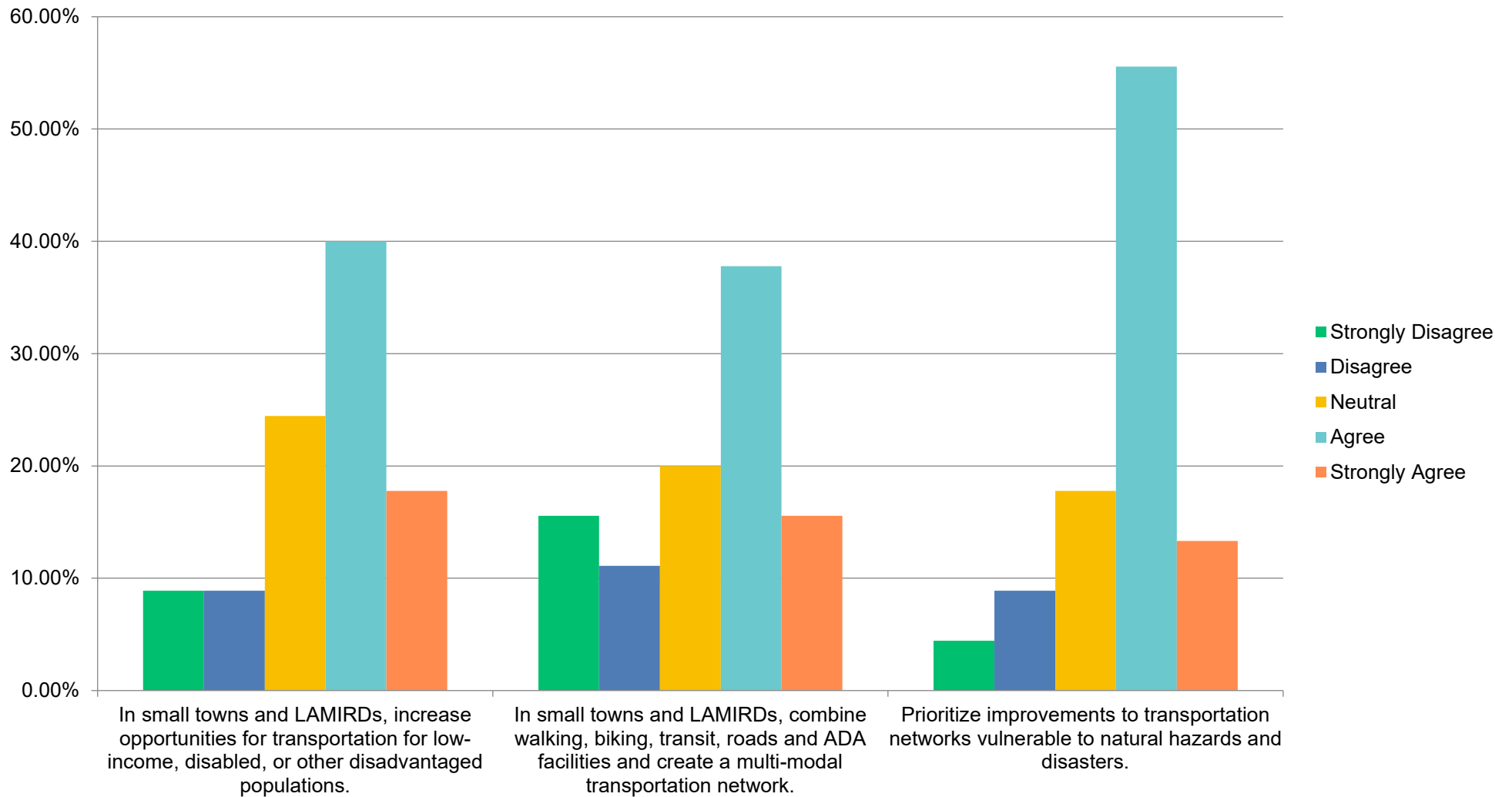
What is your response to Lewis County's proposed land use policy changes?



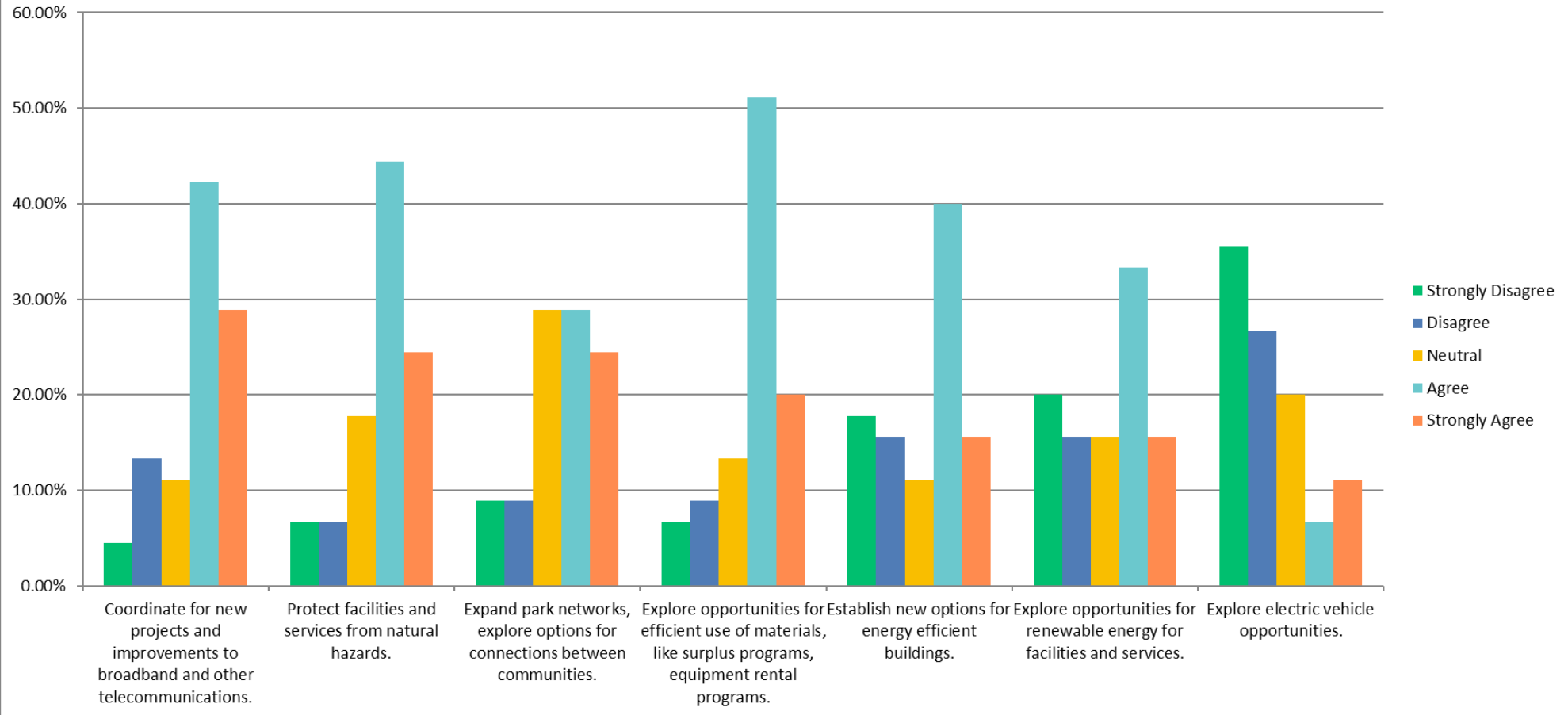
What is your response to Lewis County's proposed housing policy changes?



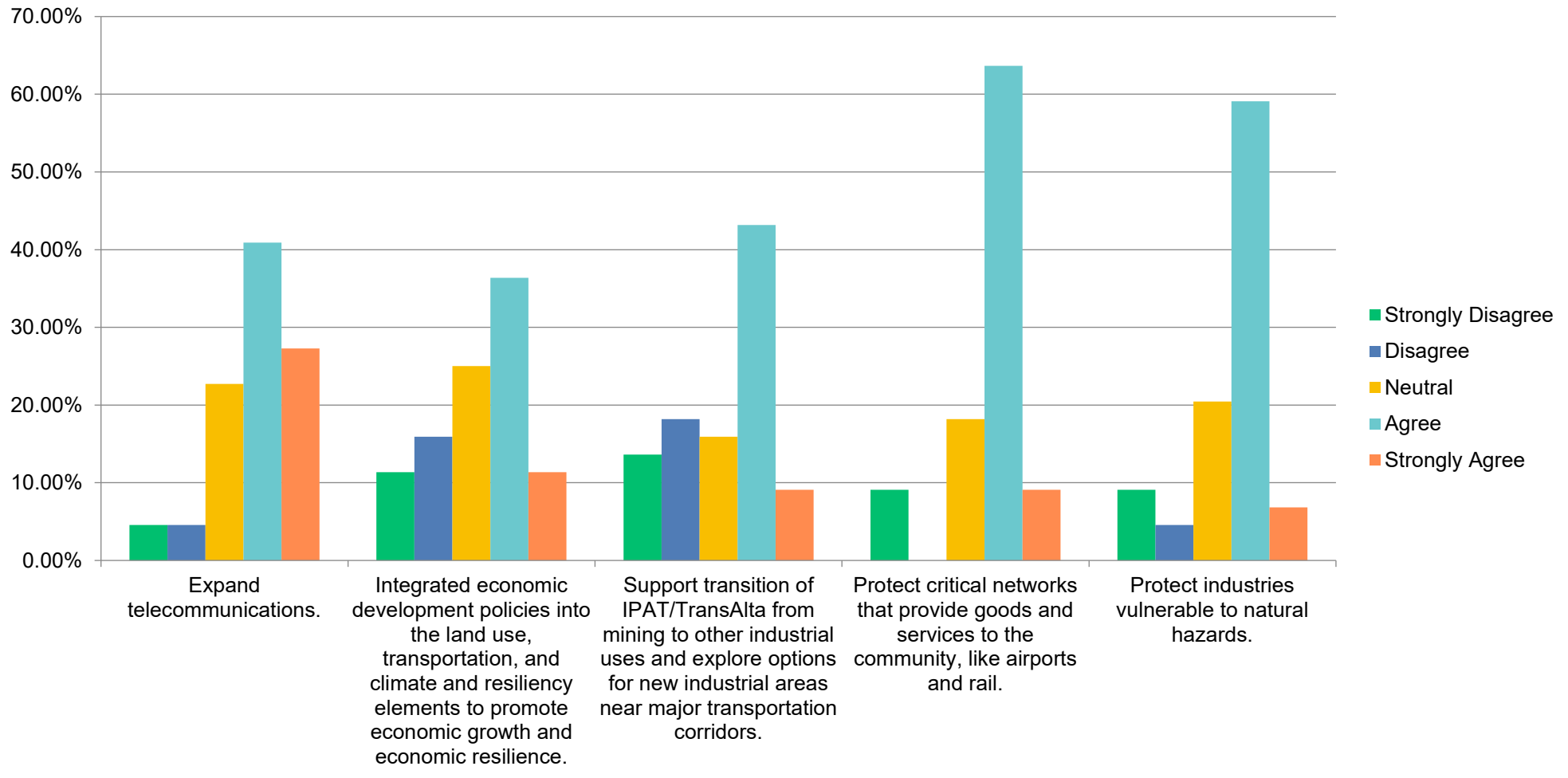
What is your response to Lewis County's proposed transportation policy changes?



What is your response to Lewis County's proposed infrastructure and services policy changes?



What is your response to Lewis County's proposed economic development policy changes?



Appendix B. Open House Public Comments & Questions

Lewis County looks to the future in comprehensive plan update

By Mitchell Roland
mitchell@chronline.com

What will Lewis County look like in 2045? Ahead of a comprehensive plan update next June, that's the question that the county's Community Development Department wants to answer.

The county's comprehensive plan is a guiding document for development and covers housing, transportation, economic development, land use and environmental preservation, among other areas.

As required by law, municipalities throughout the state must update their comprehensive plan to account for changes to state law.

"Every update, we have to address the state-mandated changes, but it's also an opportunity to incorporate local priorities into the conversation," Senior Long Range Planner Mindy Brooks said Thursday.

Last week, county staff were on hand during three open house-style community meetings to talk about the plan, the changes, and what's next for Lewis County.

"Largely, a lot of stuff isn't changing," Brooks said. "There will still be the focus on agricultural land, forestry land like there always has been."

The update, though, will address several changes to state law, including a requirement for jurisdictions to offer housing that is considered affordable at any income level.

To accomplish this, Brooks said the county is focused on the county's unincorporated towns, including Onalaska, Mineral and Packwood.

"What that comes down to is identifying places where you

Comprehensive Plan Periodic Update Open House Comprehensive Plan Overview

Lewis County 2045
Shaping the Future of our County



2

What is covered in these elements?

Land Use Element

Urban Growth Areas

Where most growth and development is anticipated and should occur at higher density than in rural areas.

Transportation Element

Ensure that the county transportation systems support growth and development and integrates with city, state and federal transportation.

Rural Areas

Where some low density growth and development is expected, but the focus is on maintaining large lots, resource lands and critical areas.

Housing Element

Provide more housing options that are affordable to people at all income levels and help people to remain in their housing.

New!

Climate Element

Reduce the communities vulnerability to natural hazards including flooding, wildfire and extreme heat.

Natural Environment

Preserve critical areas, water quality, shorelines, floodplains, air quality and open spaces.

Capital Facilities & Utilities Element

Provide sufficient county facilities and services, such as water, utilities and EMS, to support anticipate growth and development.

New!

Resiliency Sub-Element

Ensure long term community health and well-being focusing on resilient infrastructure, building design and supply chains.

Natural Resource Lands

Protected and support agricultural, forestry and mining in rural areas.

Economic Development Element

Grow Lewis County economy through agricultural, forestry, tourism and recreation, industry and workforce education.

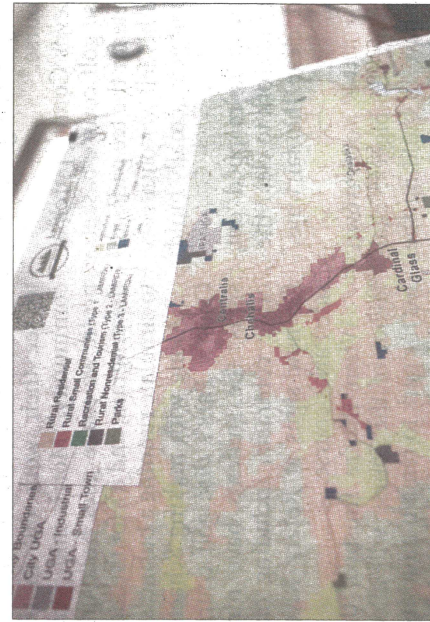
An overview of the Lewis County comprehensive plan update sits on display at the Adna Grange on Thursday, Oct. 10.

can accommodate apartments," with ways to address those issues," Brooks said.

Learn more about the comprehensive plan update and how to provide input at <https://lewiscountywa.gov/departments/community-development> under the "Comp Plan & Development Regulation Amendments" tab. For more information, contact Brooks at mindy.brooks@lewiscountywa.gov or 360-740-2610.

The plan must be adopted by June 2025.

A map outlines different types of towns and land uses at a Lewis County comprehensive plan update hosted by the Adna Grange on Thursday, Oct. 10.



Appendix B. October Open House Posters

Open house posters start on the next page. Open house posters were created in adobe InDesign and exported to PDF.



Comprehensive Plan Periodic Update Open House

Welcome



What is this about?

Welcome to the Lewis County Comprehensive Plan Periodic Update Open House. At this open house, you will learn about Lewis County's plans for housing, transportation, economic development, land use and much more.

Today's Agenda

This is a self-guided open house. Please review the boards at your own pace and ask a staff member if you have any questions.

To provide comment on these proposed changes, grab a paper survey at the welcome table to participate. Turn in the paper survey to the welcome table before you leave. Or mail in the survey after, see the last page of the survey for the address.

An online survey to participate in the open house virtually is available at lewiscountywa.gov or use the QR code. The survey will be available online until October 31st, at 5:00PM.

Why do I need to know this?

The comprehensive plan guides and manages growth and development in Lewis County over the next 20 years. It's important that the community's priorities are included in the plan's vision, goals and policies.

Take the Survey!

Please grab a paper survey from the welcome table and answer the questions as you review the boards.



Online Survey

For those who cannot attend or would like to provide further comments an online survey is available on the project website.



Looking for more information?

Check out the project website using the QR Code.

Staff Contact

Email Mindy Brooks mindy.brooks@lewiscountywa.gov



QR code to project website.





What is covered in these elements?

Land Use Element

Urban Growth Areas

Where most growth and development is anticipated and should occur at higher density than in rural areas.

Rural Areas

Where some low density growth and development is expected, but the focus is on maintaining large lots, resource lands and critical areas.

Natural Environment

Preserve critical areas, water quality, shorelines, floodplains, air quality and open spaces.

Natural Resource Lands

Protected and support agricultural, forestry and mining in rural areas.

Transportation Element

Ensure that the county transportation systems support growth and development and integrates with city, state and federal transportation.

Housing Element

Provide more housing options that are affordable to people at all income levels and help people to remain in their housing.

Capital Facilities & Utilities Element

Provide sufficient county facilities and services, such as water, utilities and EMS, to support anticipate growth and development.

Economic Development Element

Grow Lewis County economy through agricultural, forestry, tourism and recreation, industry and workforce education.

New! Climate Element

Reduce the communities vulnerability to natural hazards including flooding, wildfire and extreme heat.

New! Resiliency Sub-Element

Ensure long term community health and well-being focusing on resilient infrastructure, building design and supply chains.

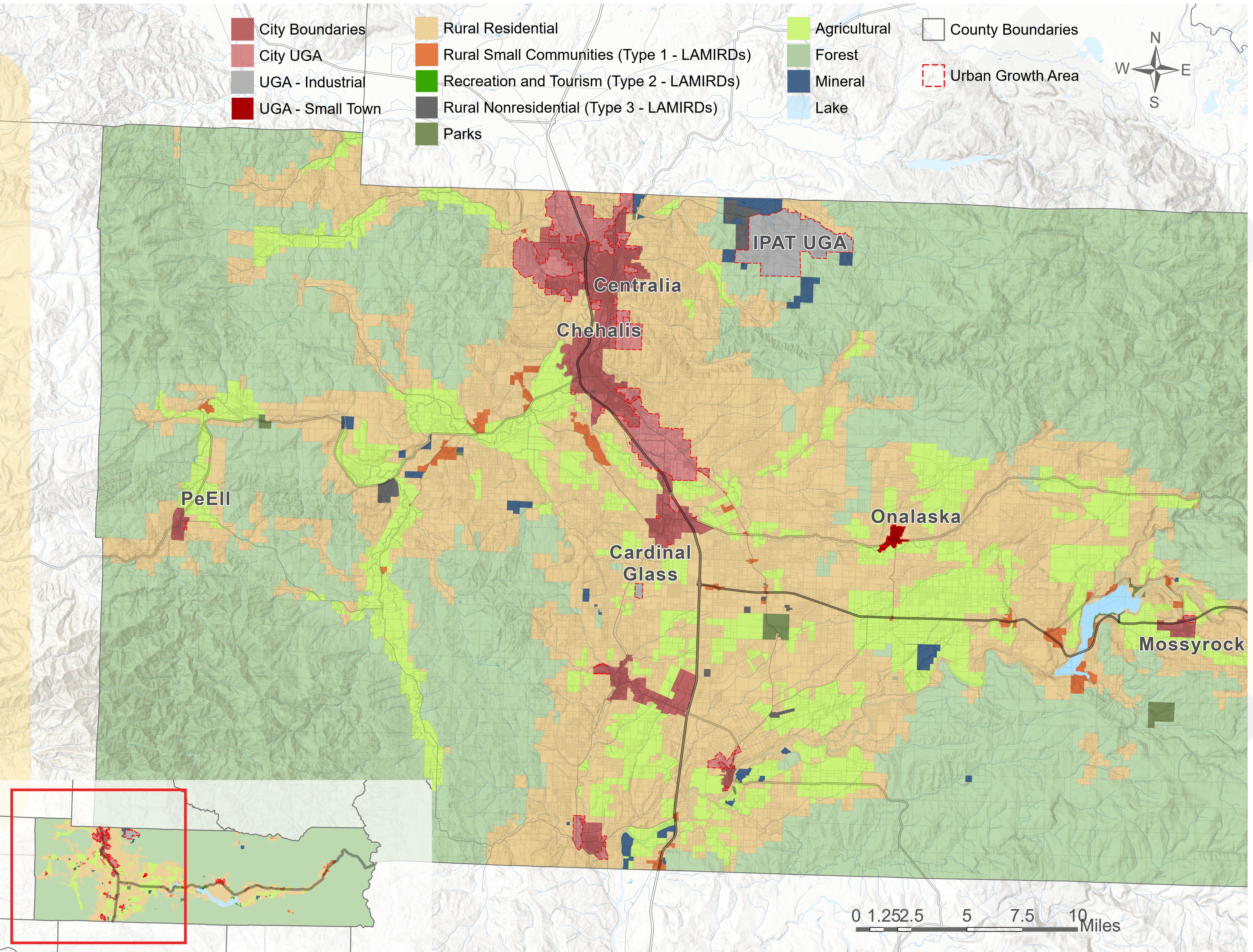
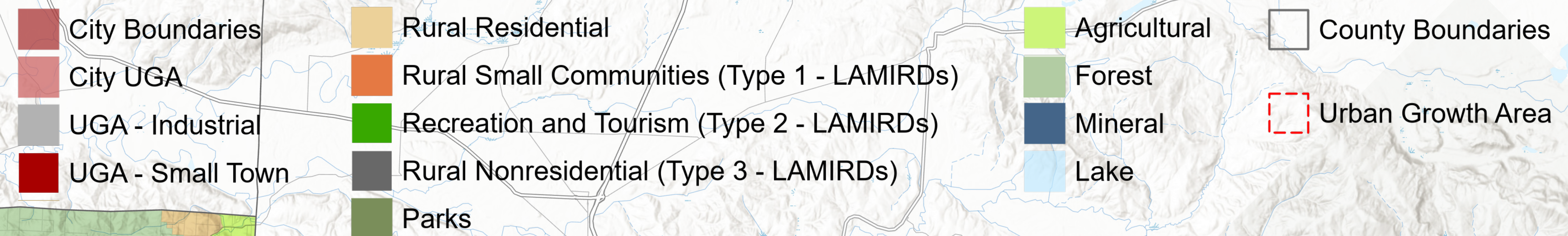
Comprehensive Plan Periodic Update Open House

Land Use Designations



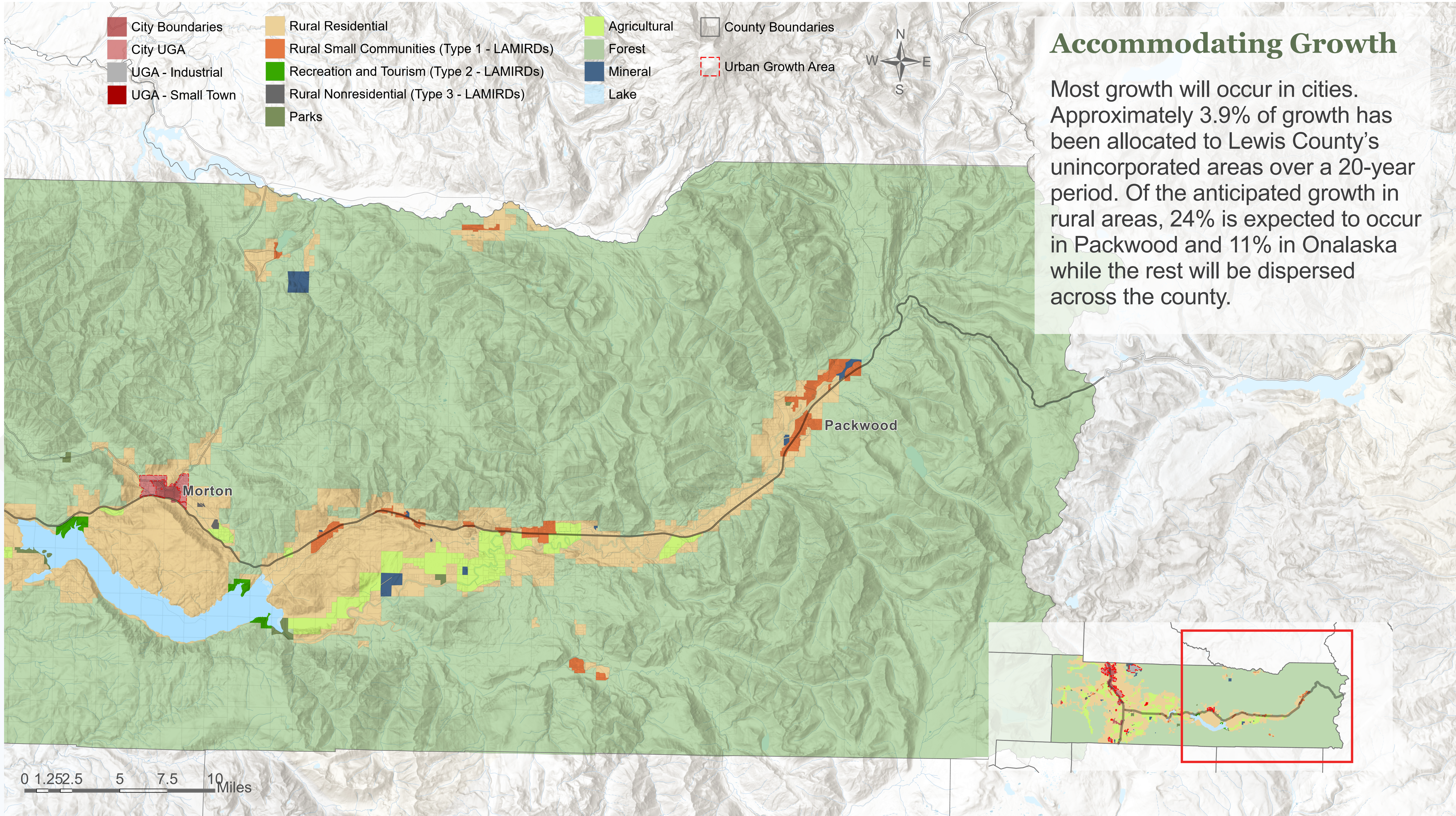
What's New?

- Onalaska UGA - Small Town, in bright red, and Packwood LAMIRD, updated to provide more housing options, employment, facilities and multi-modal transportation.
- Rural small communities, in dark orange, (previously small community, commercial crossroads, residential settlement) has been updated to provide more housing options as allowed by state law.
- IPAT UGA, in gray, and recreation and tourism, in green, will be bolstered to bring in new businesses and job opportunities.



Comprehensive Plan Periodic Update Open House

Land Use Designations



Accommodating Growth

Most growth will occur in cities. Approximately 3.9% of growth has been allocated to Lewis County's unincorporated areas over a 20-year period. Of the anticipated growth in rural areas, 24% is expected to occur in Packwood and 11% in Onalaska while the rest will be dispersed across the county.



Urban Growth Areas

These areas focus on providing urban densities or housing, employment, services, and facilities. Land uses and development patterns in urban growth areas around cities are established in coordination with the cities.

Promote economic development and employment opportunities.

Promote multi-modal transportation.

Expand housing options, especially housing options for lower income households and those with special housing needs.

Expand parks, green infrastructure, and green space networks.

Create policies to protect communities from natural hazards.

Rural Areas

These areas are established for agricultural and rural uses and housing at rural densities. Rural character is established and maintained to prevent urban and sprawl. Rural areas provide *some* commercial and employment options while maintaining rural character.

Preserve (no change to) existing rural character, uses, and densities.

Where possible, expand housing options especially for lower income households and those with special housing needs.

Create policies to protect rural communities from natural hazards.

Resource Lands

These areas are designated for forestry, agriculture, and mining. Use of this land for these purposes is protected and support through local policies.

Preserve (no change to) existing goals and policies for natural resource lands.

Support and grow local farming opportunities.

Natural Environment

Throughout all of Lewis County, regardless of land use designation, environmental policies are established and maintained to promote water quality, air quality, preservation of critical areas, stormwater, and open space preservation.

Update policies to address best available science.

Update policies to address natural hazards and especially those worsened by climate change.

What's New?

Complete the survey and let us know if you agree with these proposed changes.

Comprehensive Plan Periodic Update Open House

Housing



Overview

Updated state laws require Lewis County to revise the Housing Element and include the following:

- Plan for and accommodate housing for moderate, low, very-low, and extremely-low incomes households.
- Include moderate density housing options.
- Plan for emergency housing and permanent supportive housing.

Existing Policies Focus On: Housing Types & Preservation, Housing Affordability, Housing Development

- Allow rural and urban densities, manufactured housing, accessory dwelling units.
- Provide housing for low-income families.
- Allow future housing development opportunities compatible with agricultural uses and adjacent natural resource lands.
- Preserve existing housing stock.
- Coordinate to establish affordable housing programs.

What's New?

Housing Types

Provide housing types in Lewis County for all incomes.
 Increase middle housing, manufacture housing, and ADUs.
 Establish emergency shelters.

Housing Affordability

Study and regulate short-term rental use in Lewis County to reduce the loss of long-term housing.

Housing Equity (New)

Provide opportunities for special housing types like group homes, and other housing conditions for specific users.
 Understand and mitigate health impacts in housing.
 Protect housing populations vulnerable to natural hazards and displacement.

Housing Preservation

Provide resources and services to rural residents to preserve housing stock.

Housing Development

Improve permit processes and establish clear regulations for housing development.

Complete the survey and let us know if you agree with these proposed changes.





Transportation

Overview

Updates to state law requires the following changes:

- Maintain existing transportation infrastructure.
- Enhance safety and transportation options equitably and for vulnerable users.
- Promote multi-modal transportation networks (transit, walking, biking, wheelchair, mobility).

Existing Policies Focus On: Maintenance, Safety, Construction, and Coordination, for Roads, Transit, Walking, Biking, Rail, Air transport

- Maintain safe and free-flowing transportation networks.
- Coordinate with all agencies for construction and maintenance.
- Seek funding for future projects.
- Provide air service at County airports with compatible adjacent uses.
- Maintain military training routes.
- Preserve existing rail corridors.
- Provide alternative transportation routes.
- Provide walking routes, biking routes, and transit.
- Ensure demand management and adequate levels of service.

What's New?

Resilient Transportation

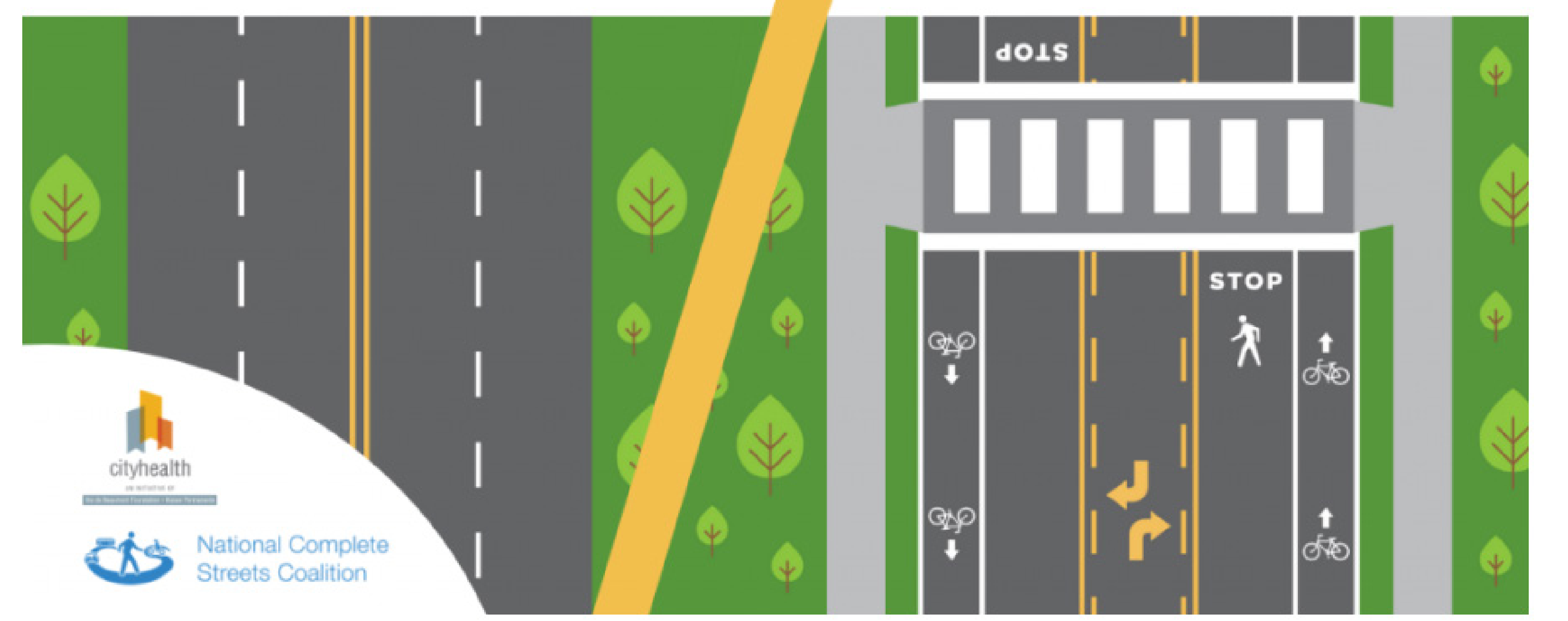
Prioritize improvements to transportation networks vulnerable to natural hazards and disasters.

Provide transportation services equitably across the County, including rural areas.

Multi-Modal Transportation Network

In small towns and LAMIRDs, increase opportunities for transportation for low-income, disabled, or other disadvantaged populations.

In small towns and LAMIRDs, combine walking, biking, transit, roads and ADA facilities and create a multi-modal transportation network.



Include cars, buses, bikes, pedestrian, micromobility (scooters), wheelchair in transportation networks.

Complete the survey and let us know if you agree with these proposed changes.

Comprehensive Plan Periodic Update Open House Infrastructure and Services



Overview

Minimal changes to state law impacted the capital facilities and utilities elements in the Comprehensive Plan. Generally, policies have been revised to better coordinate with utility providers.

Existing Policies Focus On: Construction, Planning, and Coordination for Buildings, Parks, Schools, Water, Wastewater, Stormwater, & Utilities

- Seek sustainable and economic opportunities for funding projects.
- Provide services concurrent with development.
- Maintain established levels of service for facilities and services.
- Ensure adequate water supplies and infrastructure are provided.
- Reduce stormwater impacts on local rivers, streams, and wetlands.
- Provide high quality parks.
- Support improvement of schools.
- Provide solid waste service services.
- Coordinate with utility providers for gas, electric, telecommunications.

What's New?

Energy and Sustainability

- Explore electric vehicle opportunities.
- Establish new options for energy efficient buildings.
- Explore opportunities for renewable energy for facilities and services.
- Explore opportunities for efficient use of materials, like surplus programs, equipment rental programs.

County Buildings

Protect facilities and services from natural hazards.

Parks

Expand park networks, explore options for connections between communities.

Broadband and Fiber Optics

Coordinate for new projects and improvements to broadband and other telecommunications.

Complete the survey and let us know if you agree with these proposed changes.



Comprehensive Plan Periodic Update Open House

Economic Development



Overview

Lewis County intends to continue economic development initiatives through land use integration. Most of the economic development goals and policies have been revised for feasibility and will be integrated throughout the comprehensive plan elements.

Existing Policies Focus On: Wage, Key Industries, Tourism, Infrastructure, Entrepreneurship, Business Retention, Workforce Development, & Government

- Increase wage levels.
- Promote diverse job opportunities.
- Target natural resource industries.
- Promote agricultural industries activities.
- Encourage energy related industries.
- Develop recreation and tourism opportunities.
- Provide infrastructure for economic development expansion.
- Promote entrepreneurship in Lewis County.
- Promote the retention and expansion of existing businesses.
- Provide workforce training opportunities.

What's New?

New Industries

Support transition of IPAT/ TransAlta from mining to other industrial uses and explore options for new industrial areas near major transportation corridors.

Economic Development Integration

Economic development policies will be better integrated into the land use, transportation, and climate and resiliency elements to promote economic growth and economic resilience.

Resilient Economies

Protect industries vulnerable to natural hazards.
Protect critical networks that provide goods and services to the community, like airports and rail.
Expand telecommunications.

Complete the survey and let us know if you agree with these proposed changes.



Comprehensive Plan Periodic Update Open House

Climate and Resilience (New Element!)



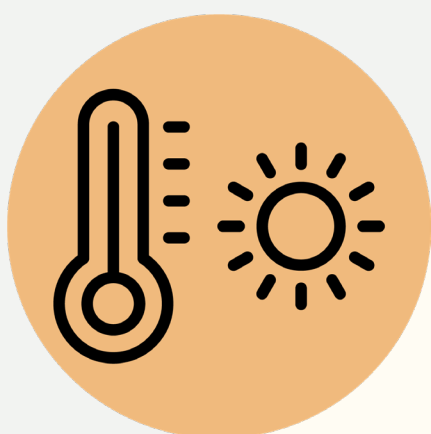
Overview

Per new state requirements the Climate and Resiliency element must establish goals and policies to:

- Reduce greenhouse gas emissions generated by transportation and land use (see other elements).
- Enhance resiliency to and adverse impacts of climate change.
- Reduce vehicle miles traveled (see transportation element).
- Address natural hazards aggravated by climate change.



Flooding



Reduced Snowpack / Rising Temps.



Extreme Precipitation



Avalanche



Wildfire & Smoke

Flood Resilience & Critical Areas

Protect ecosystems susceptible to natural hazards.

Emergency Preparedness

Expand emergency response, notification alerts, post disaster response, public facilities and sheltering, communication system upgrades.

Evacuation Systems

Expand evacuation routes. Protect critical evacuation routes from natural hazards. Expand education on evacuation routes and practices.

Wildfire Resilience

Ensure wildfire planning is continued. Provide education on wildfire preparedness and property maintenance. Enhance protection of areas vulnerable to wildfires.

Historic and Cultural Resources

Protect historic areas from natural hazards.

Sustainable Design

Enhance buildings to increase resilience to flooding, fire, extreme heat, and utility loss. Examples: fire resilience standards, utility improvements, power loss management.

Public Health and Wellbeing

Educate community members on natural hazards awareness, preparedness and mitigation. Expand services to communities for hazard mitigation and disaster relief.

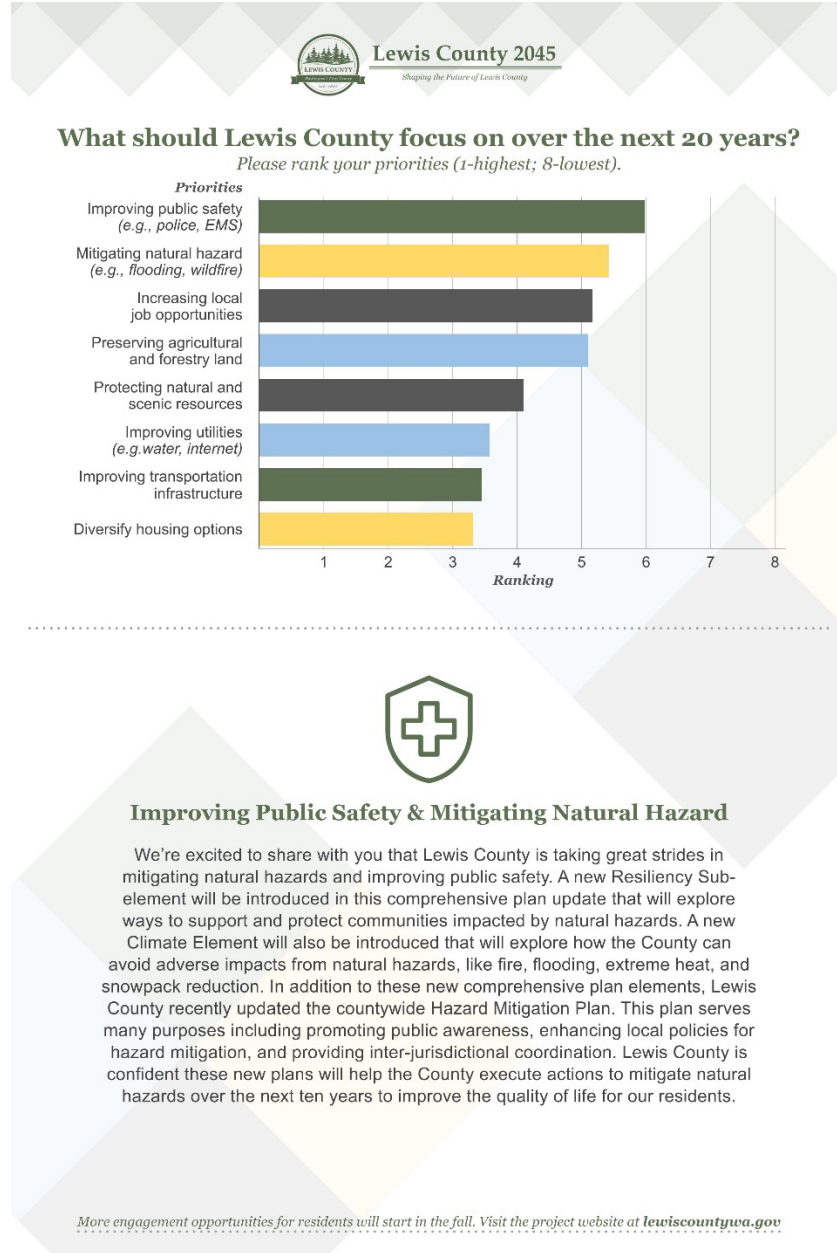
Resilient Economies

Protect industries vulnerable to natural hazards. Protect critical networks that provide goods and services to the community, like airports and rail. Expand telecommunications.

Complete the survey and let us know if you agree with these proposed changes.

Appendix C. Pop-Up Events Posters

Staff presented the following information at pop-up community events to report to the community on engagement collected.

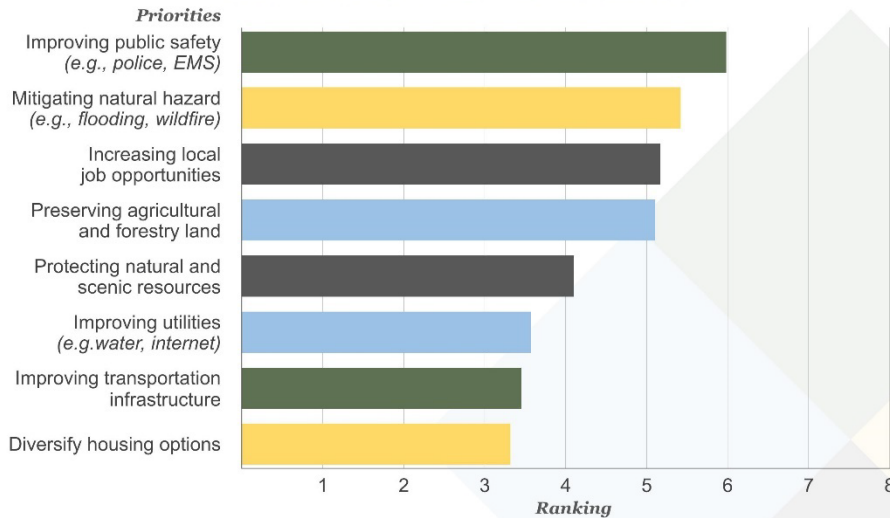


Survey Results Poster 1 – Used for Community Pop-up Events



What should Lewis County focus on over the next 20 years?

Please rank your priorities (1-highest; 8-lowest).



Please read the paragraphs below to learn how Lewis County is responding to residents' top priorities for the next ten years. Changes to the Comprehensive Plan, described below, will be presented to the community this fall. Please sign up for the project newsletter or visit the project website at lewiscountywa.gov. You can read the current Comprehensive Plan online at: lewiscountywa.gov, and search for "comprehensive plan".



Improving Public Safety & Mitigating Natural Hazard

We're excited to share with you that Lewis County is taking great strides in mitigating natural hazards and improving public safety. A new Resiliency Sub-element will be introduced in this comprehensive plan update that will explore ways to support and protect communities impacted by natural hazards. A new Climate Element will also be introduced that will explore how the County can avoid adverse impacts from natural hazards, like fire, flooding, extreme heat, and snowpack reduction. In addition to these new comprehensive plan elements, Lewis County recently updated the countywide Hazard Mitigation Plan. This plan serves many purposes including promoting public awareness, enhancing local policies for hazard mitigation, and providing inter-jurisdictional coordination. Lewis County is confident these new plans will help the County execute actions to mitigate natural hazards over the next ten years to improve the quality of life for our residents.



Increasing Local Job Opportunities

Lewis County will be reviewing the economic development goals and policies in the comprehensive plan to see where opportunities could be provided to increase local job opportunities. This may include a wide range of strategies by sector or locality. This will also be supported by new goals and policies that provide new opportunities for housing, transportation, and services as these are vital components of our residents' daily lives.



Protecting Natural and Scenic Resources

Lewis County protects natural and scenic resources through goals and policies in the comprehensive plan. There are a series of existing goals and policies intent on protecting natural resources. These goals and policies can be found in the Land Use Element of the Comprehensive Plan under the "Natural Environment Goals and Policies". You can review these policies to see how these lands are currently being protected. Lewis County will review these policies to find ways to strengthen these efforts to protect natural and scenic resources.



Preserving Agricultural and Forestry Land

Lewis County preserves agricultural and forestry lands through goals and policies in the comprehensive plan. There are a series of existing goals and policies intent on preserving agricultural and forestry lands. These goals and policies can be found in the Land Use Element of the Comprehensive Plan under the "Rural Goals and Policies" and the "Resource Land Goals and Policies". You can review the rural and resource land policies to see how these lands are currently being preserved. Lewis County will review these policies to find ways to strengthen these preservation efforts.



Improving Utilities

Through the Capital Facilities and Utilities Element in the Comprehensive Plan, Lewis County will continue to expand on ways to improve utilities. Improving utilities can happen in many ways like increased coordination and communication between providers, construction of utilities in the community, programs to help residents access utilities, and identifying gaps in utility services in the community. Lewis County will explore all options to improve these conditions.



Improving Transportation Infrastructure

Through the Transportation Element and Capital Facilities and Utilities Element in the Comprehensive Plan, Lewis County will review policies related to improving transportation infrastructure. Lewis County is focused on expanding options for transportation to all residents, this includes transportation beyond single-occupancy vehicles. Expanding options like walking, biking, and transit can reduce daily costs of living for residents, increase job opportunities for populations, and improve quality of life for senior citizens and other populations that can't drive.



Diversify Housing Options

Through the Housing Element in the Comprehensive Plan, Lewis County will be proposing new policies to expand housing options. The County is focused on providing housing options for all income levels to avoid residents having to pay more than 30% of their income to afford housing. This is a critical part of residents' quality of life and will ensure that our residents can live in Lewis County for future generations.

More engagement opportunities for residents will start in the fall. Visit the project website at lewiscountywa.gov

Survey Results Poster 2 – Used for Community Pop-up Events



Lewis County 2045

Shaping the Future of Lewis County

What best describes you?

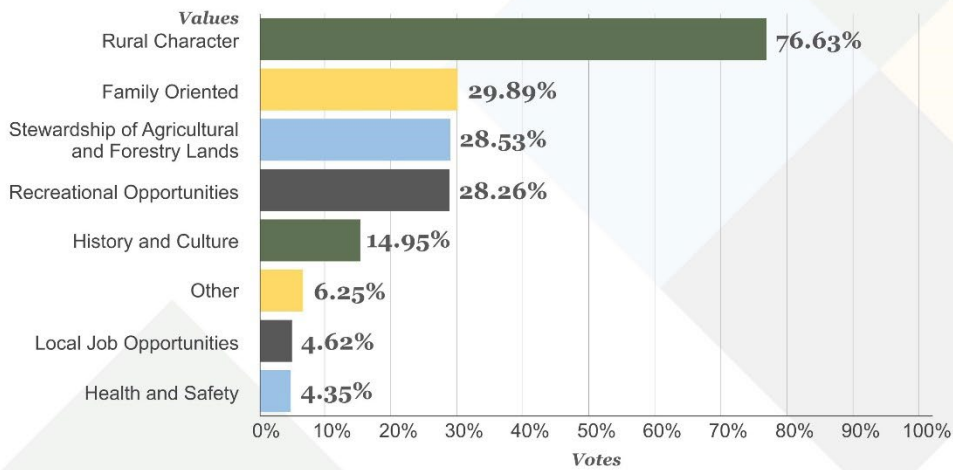
Select all that apply.



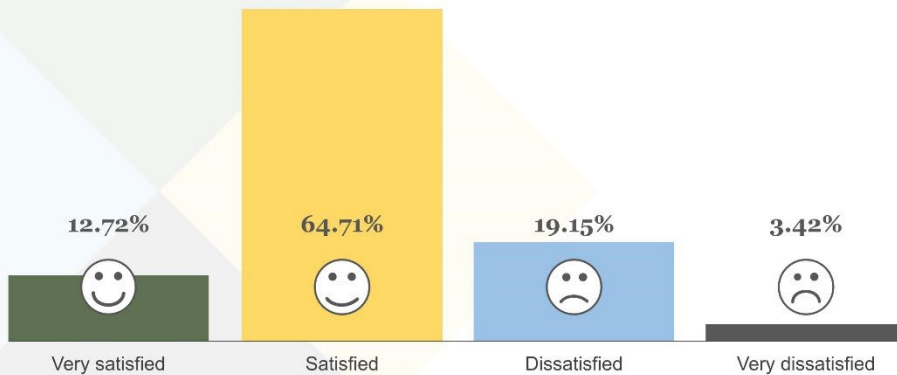
If you live in Lewis County, based on the map below, what District do you live in?



Pick two values that best describe Lewis County:



Are you satisfied with the quality of life in Lewis County?



More engagement opportunities for residents will start in the fall. Visit the project website at lewiscountytwa.gov

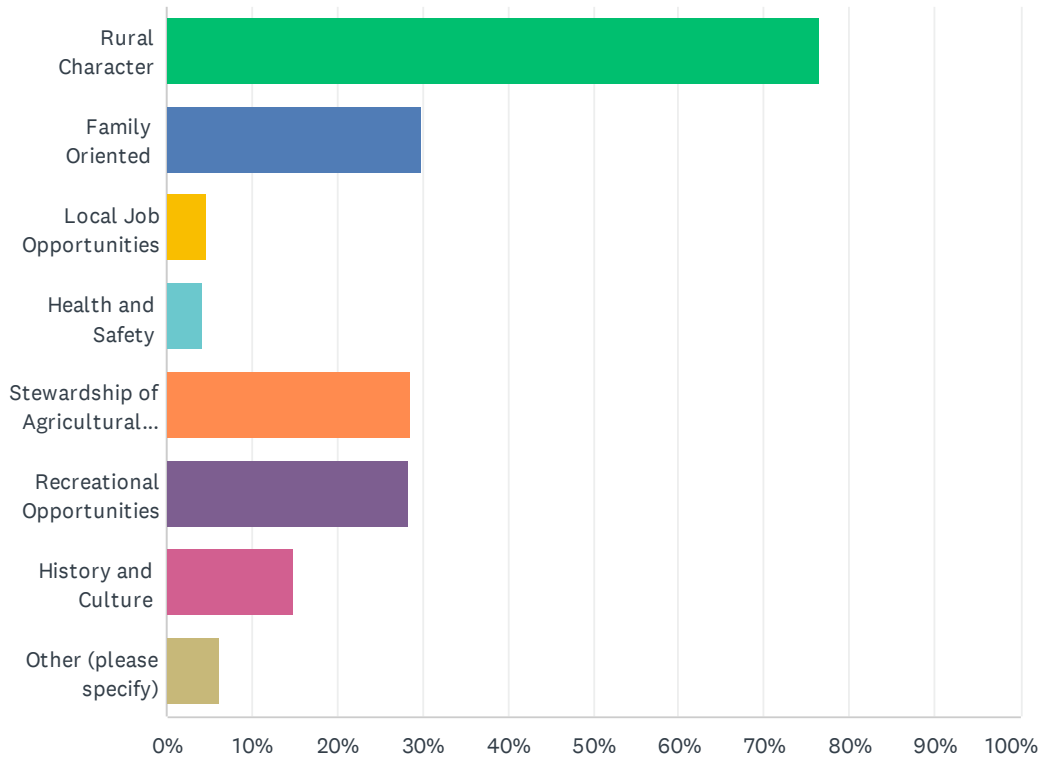
Survey Results Poster 3 – Used for Community Pop-up Events

Appendix C. First Community Survey Results

First community survey results start on the next page. Survey results were exported from SurveyMonkey.

Q1 Pick two values that best describe Lewis County:

Answered: 736 Skipped: 0



ANSWER CHOICES	RESPONSES	
Rural Character	76.63%	564
Family Oriented	29.89%	220
Local Job Opportunities	4.62%	34
Health and Safety	4.35%	32
Stewardship of Agricultural and Forestry Lands	28.53%	210
Recreational Opportunities	28.26%	208
History and Culture	14.95%	110
Other (please specify)	6.25%	46
Total Respondents: 736		

#	OTHER (PLEASE SPECIFY)	DATE
1	Family Farming	5/9/2024 10:19 AM
2	diversity	4/25/2024 9:37 AM
3	Difficult for minorities	4/6/2024 5:16 PM
4	Close minded and racist culture	4/5/2024 4:22 PM

Lewis County 2045 Community Vision Survey

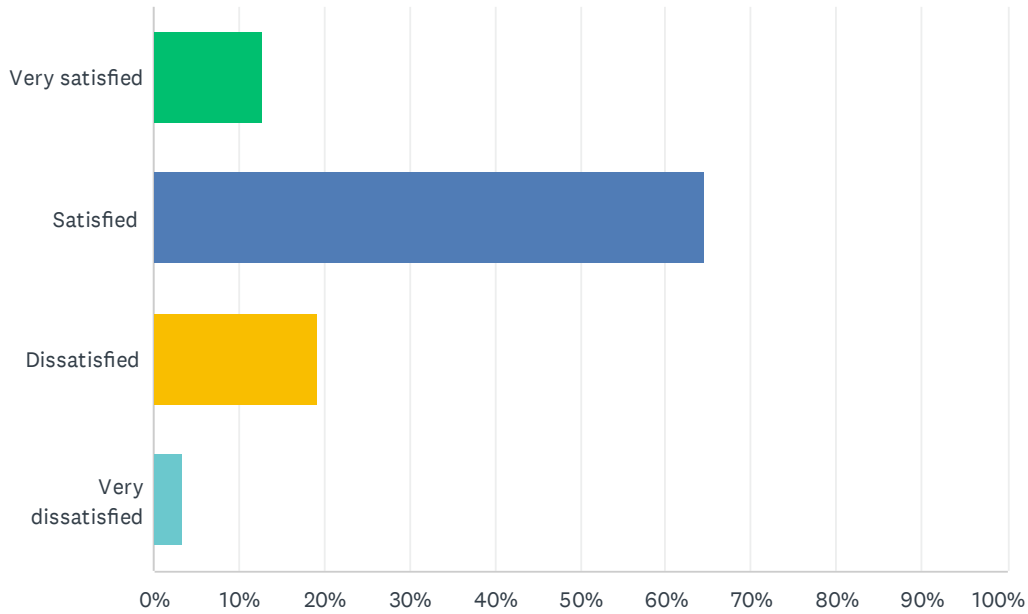
5	This question isn't worded well. Do you mean pick the two things we'd most like Lewis County to value? Or do you mean pick two things we already believe the country values? Because I'd say Lewis County has a rural character but this is not a "value"; it's an attribute that is in and of itself neither innately positive nor negative. It is not a "value", though an individual could engage in the act of valuing the rural nature of the county. Better wording here would get you more usable data.	4/5/2024 4:08 PM
6	Increasingly infested with transients	4/4/2024 3:03 PM
7	As a young adult, the county is conservative and comes across as not welcoming for people who aren't republicans. It gives off a vibe of bigoted, racist, and homophobic.	4/4/2024 8:51 AM
8	Dirty and homelessness	4/4/2024 8:42 AM
9	na	4/4/2024 5:03 AM
10	Constitutional law is followed	4/4/2024 4:42 AM
11	Community participation	4/3/2024 9:05 PM
12	Anti Liberal Antifa Commie LGBTQ	4/3/2024 8:45 PM
13	Full of transplants	4/3/2024 7:38 PM
14	Low crime	4/3/2024 4:53 PM
15	peaceful and quiet	4/3/2024 3:24 PM
16	It's not a blue county	4/3/2024 3:14 PM
17	None	4/3/2024 2:34 PM
18	Farm and agriculture, wildlife!	4/3/2024 1:47 PM
19	I don't feel any of the choices best describe this county but it would be nice if the county would pick some to focus on	4/3/2024 11:49 AM
20	Thieves, drugs, and a blind local government	4/3/2024 11:39 AM
21	Low crime rate and public safety	4/3/2024 11:37 AM
22	Walkable grocery shopping	4/3/2024 11:05 AM
23	Over crowded	4/3/2024 10:14 AM
24	Rude people with nothing better to do than cut trees	4/3/2024 9:04 AM
25	Poorly educated	4/3/2024 9:01 AM
26	Homelessness	4/3/2024 8:44 AM
27	Good ole boys club and shady deals	4/3/2024 8:12 AM
28	Poor infrastructure planning	4/3/2024 7:51 AM
29	Oh dear!	4/3/2024 7:44 AM
30	Affordable opportunities for business enterprises	4/3/2024 5:39 AM
31	-low income/ high income	4/3/2024 2:42 AM
32	We lost what made us special. To busy fighting now and not finding common ground on issues	4/3/2024 12:32 AM
33	Family oriented meaning inclusive of lgbtq families	4/3/2024 12:09 AM
34	Resources for those in need	4/2/2024 11:14 PM
35	Bedroom county	4/2/2024 10:50 PM
36	Conservative principles	4/2/2024 10:50 PM
37	Little services.	4/2/2024 10:33 PM
38	Self Sufficiency	4/2/2024 10:22 PM

Lewis County 2045 Community Vision Survey

39	Housing	4/2/2024 8:27 PM
40	Racist/Bigots	4/2/2024 6:50 PM
41	Good old boys club	4/2/2024 5:08 PM
42	Good ole boys club	4/2/2024 4:26 PM
43	The up and coming next Seattle	4/2/2024 2:58 PM
44	Consertive	4/2/2024 2:53 PM
45	Giving in to outside influence	4/2/2024 2:35 PM
46	Small town friendly vibe	4/2/2024 1:22 PM

Q2 Are you satisfied with the quality of life in Lewis County?

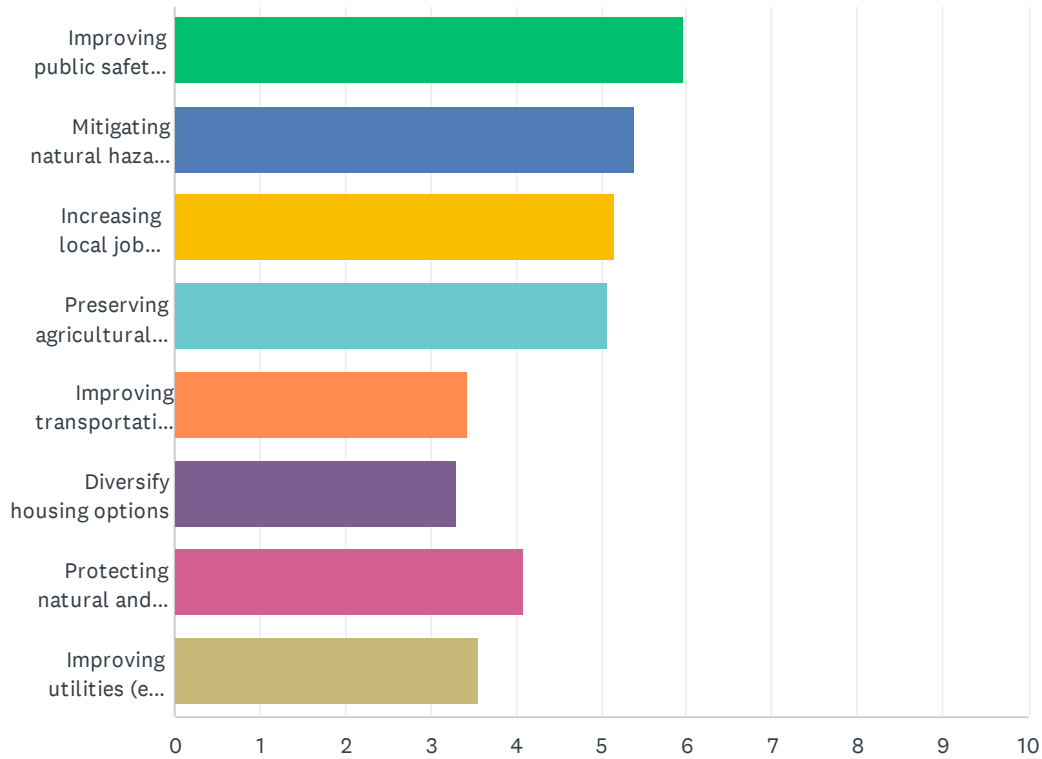
Answered: 731 Skipped: 5



ANSWER CHOICES	RESPONSES	
Very satisfied	12.72%	93
Satisfied	64.71%	473
Dissatisfied	19.15%	140
Very dissatisfied	3.42%	25
TOTAL		731

Q3 What should Lewis County focus on over the next 20 years? Please rank your priorities (1-highest; 8-lowest).

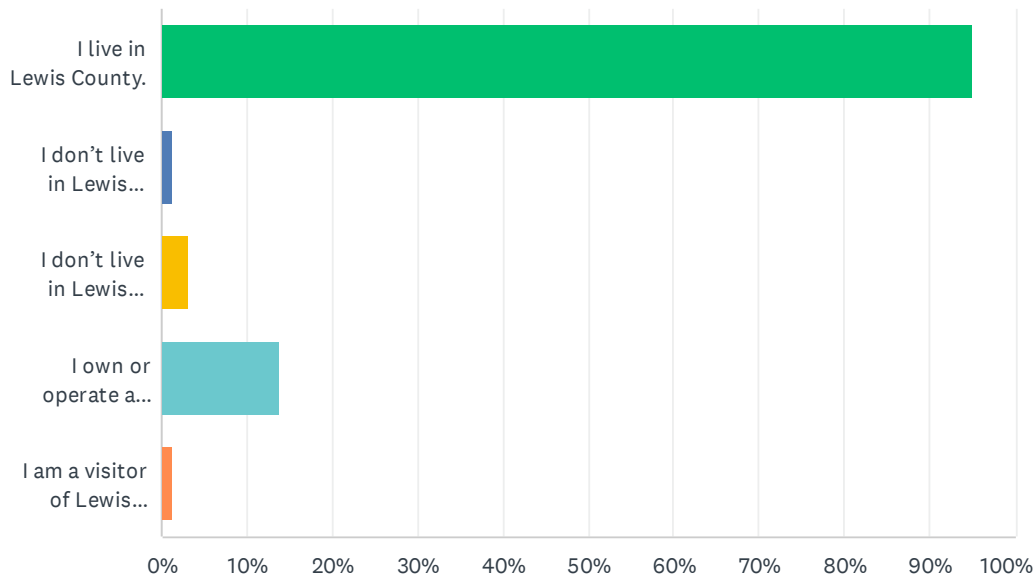
Answered: 736 Skipped: 0



	1	2	3	4	5	6	7	8	TOTAL	SCORE
Improving public safety (e.g., police, EMS)	35.46% 261	16.03% 118	13.99% 103	11.28% 83	7.07% 52	5.98% 44	4.08% 30	6.11% 45	736	5.97
Mitigating natural hazard (e.g., flooding, wildfire)	14.27% 105	20.92% 154	18.21% 134	16.71% 123	11.28% 83	8.02% 59	6.52% 48	4.08% 30	736	5.40
Increasing local job opportunities	11.68% 86	18.75% 138	17.80% 131	12.36% 91	17.12% 126	11.28% 83	8.15% 60	2.85% 21	736	5.15
Preserving agricultural and forestry land	13.32% 98	13.72% 101	17.53% 129	18.48% 136	12.23% 90	12.23% 90	9.24% 68	3.26% 24	736	5.07
Improving transportation infrastructure	2.85% 21	4.76% 35	7.20% 53	9.92% 73	18.89% 139	21.20% 156	20.92% 154	14.27% 105	736	3.44
Diversify housing options	8.70% 64	7.34% 54	6.79% 50	6.39% 47	6.39% 47	13.72% 101	19.29% 142	31.39% 231	736	3.30
Protecting natural and scenic resources	8.56% 63	11.28% 83	10.60% 78	13.45% 99	10.60% 78	12.91% 95	17.80% 131	14.81% 109	736	4.10
Improving utilities (e.g. water, internet)	5.16% 38	7.20% 53	7.88% 58	11.41% 84	16.44% 121	14.67% 108	13.99% 103	23.23% 171	736	3.57

Q4 What best describes you? Select all that apply.

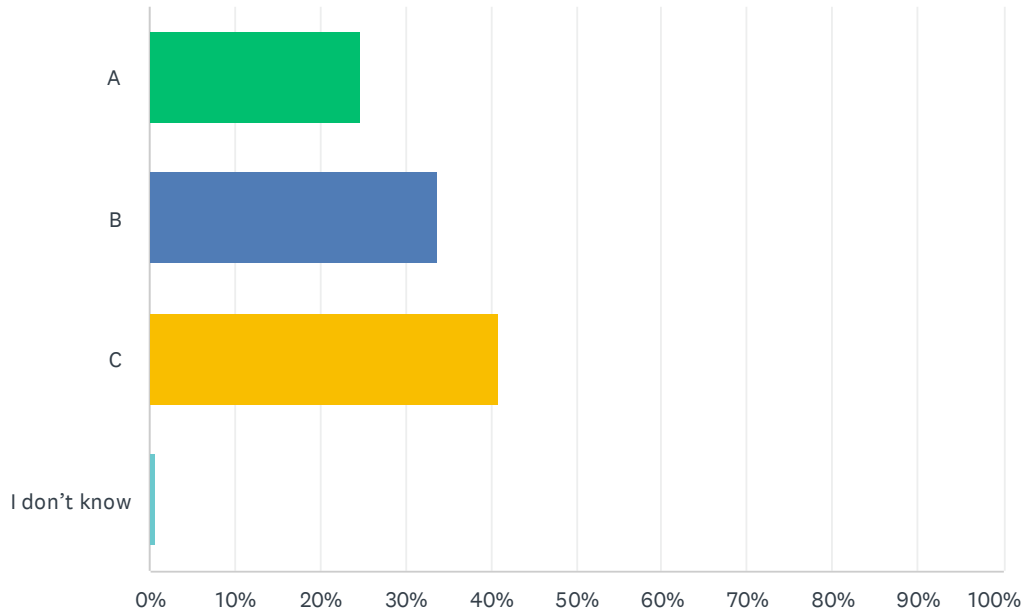
Answered: 731 Skipped: 5



ANSWER CHOICES	RESPONSES	
I live in Lewis County.	95.08%	695
I don't live in Lewis County, but I work in Lewis County.	1.37%	10
I don't live in Lewis County, but I own property in Lewis County.	3.15%	23
I own or operate a business in Lewis County.	13.82%	101
I am a visitor of Lewis County.	1.23%	9
Total Respondents: 731		

Q5 If you live in Lewis County, based on the map below, what District do you live in?

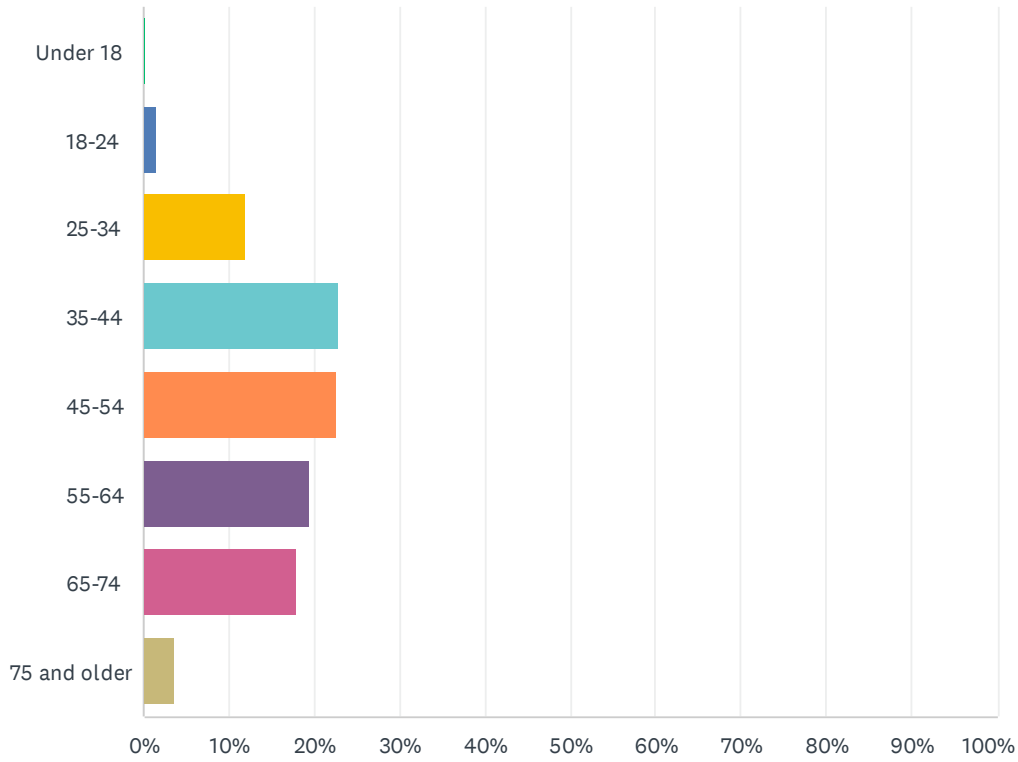
Answered: 723 Skipped: 13



ANSWER CHOICES	RESPONSES	
A	24.76%	179
B	33.61%	243
C	40.94%	296
I don't know	0.69%	5
TOTAL		723

Q6 How old are you?

Answered: 734 Skipped: 2



ANSWER CHOICES	RESPONSES	
Under 18	0.14%	1
18-24	1.50%	11
25-34	11.85%	87
35-44	22.89%	168
45-54	22.62%	166
55-64	19.35%	142
65-74	17.98%	132
75 and older	3.68%	27
TOTAL		734

Q7 If you speak a language other than English at home, what language do you speak?

Answered: 60 Skipped: 676

#	RESPONSES	DATE
1	N/A	5/8/2024 7:29 AM
2	Spanish	5/8/2024 7:03 AM
3	Spanish	5/8/2024 1:17 AM
4	French and Spanish	4/17/2024 3:58 PM
5	English	4/9/2024 10:30 AM
6	N/a	4/6/2024 1:33 PM
7	Foul	4/5/2024 10:23 PM
8	Russian	4/5/2024 8:42 PM
9	ASL	4/5/2024 4:22 PM
10	Spanish	4/5/2024 2:59 PM
11	--	4/5/2024 9:55 AM
12	n/a	4/4/2024 3:02 PM
13	French, Arabic, Indonesian, Spanish	4/4/2024 12:03 PM
14	Spanish	4/4/2024 10:55 AM
15	English	4/4/2024 10:19 AM
16	English	4/4/2024 8:42 AM
17	Sometimes Spanish	4/4/2024 8:02 AM
18	Sign language	4/4/2024 7:12 AM
19	English	4/3/2024 11:16 PM
20	Na	4/3/2024 9:05 PM
21	no	4/3/2024 8:40 PM
22	None	4/3/2024 7:21 PM
23	n/a	4/3/2024 7:04 PM
24	No	4/3/2024 6:22 PM
25	No	4/3/2024 6:18 PM
26	N/A	4/3/2024 3:24 PM
27	N/A	4/3/2024 3:14 PM
28	N/A	4/3/2024 1:26 PM
29	Portuguese	4/3/2024 9:57 AM
30	None	4/3/2024 9:26 AM
31	English	4/3/2024 9:15 AM

Lewis County 2045 Community Vision Survey

32	English	4/3/2024 9:02 AM
33	French	4/3/2024 8:39 AM
34	Na	4/3/2024 8:29 AM
35	NA	4/3/2024 8:27 AM
36	Spanish	4/3/2024 8:02 AM
37	N/a	4/3/2024 7:51 AM
38	N/A	4/3/2024 7:36 AM
39	Spanish	4/3/2024 7:29 AM
40	N/A	4/3/2024 5:56 AM
41	English, why is this even a question it shouldn't matter what language people speak in their own home.	4/3/2024 2:42 AM
42	No	4/2/2024 10:54 PM
43	English only	4/2/2024 8:21 PM
44	German	4/2/2024 7:53 PM
45	Ukrainian	4/2/2024 6:31 PM
46	N/A	4/2/2024 6:25 PM
47	Norwegian	4/2/2024 5:22 PM
48	Romanian, Spanih, Greek	4/2/2024 4:55 PM
49	Na	4/2/2024 4:50 PM
50	Russian	4/2/2024 4:24 PM
51	Spanish	4/2/2024 4:03 PM
52	N/A	4/2/2024 3:27 PM
53	None	4/2/2024 2:56 PM
54	NA	4/2/2024 2:27 PM
55	N/A	4/2/2024 2:22 PM
56	N/A	4/2/2024 1:59 PM
57	None	4/2/2024 1:45 PM
58	German	4/2/2024 1:36 PM
59	now	4/2/2024 1:32 PM
60	english only	4/2/2024 10:29 AM

Q8 If you would like to be added to the mailing list for Lewis County 2045 updates, please provide your email.

Answered: 236 Skipped: 500