



Lewis County Public Health & Social Services Community Newsletter

Winter 2024

Winter Health Spotlight:



LEWIS COUNTY PUBLIC HEALTH AND SOCIAL SERVICES

PERTUSSIS (WHOOPIING COUGH)

WHAT IS PERTUSSIS?

Pertussis is a very contagious infection that causes a coughing illness. It is caused by the bacteria *Bordetella pertussis* that are found in the mouth, nose, and throat of an infected person. Pertussis is also known as whooping cough.

WHO CAN GET PERTUSSIS?

Pertussis can occur at any age. Severe illness is more common in infants and young children who either have never been vaccinated or who have not received the full series of vaccines. Many cases occur in older children and adults because protection from the vaccine lasts only 5 to 10 years after the last dose.

WHAT ARE SYMPTOMS OF PERTUSSIS?

Symptoms appear between 5-21 days after exposure, usually 7-10 days.

- The illness begins with cold-like symptoms, such as a runny nose, sore throat, and mild cough.
- Within 1-2 weeks, the cough becomes more severe, and leads to coughing fits, difficulty in getting one's breath, mucus production, vomiting following coughing, and a "whooping" sound while struggling to inhale after coughing. Fever is usually absent, and people often do not appear ill between coughing fits.
- The disease may last 6-10 weeks or longer. Pertussis is most dangerous in infants less than 6 months of age as they may not cough but stop breathing, leading to hypoxia, brain damage and death.

HOW IS PERTUSSIS SPREAD?

The bacteria are found in the nose and throat of an ill person and are spread through droplets when infected people cough, sneeze, or talk. The greatest risk of spread is during the early stage when it appears to be just a simple cold.

Without antibiotic treatment, a person is contagious for up to 3 weeks after the start of coughing fits. If treated with antibiotics, then the ill person is contagious until 5 days after treatment begins even though the cough may continue.

HOW IS PERTUSSIS DIAGNOSED?

A swab from the back of the nose and throat is necessary for identifying the bacteria. A routine throat culture is not adequate to diagnose this disease. It may take as long as 10 days to receive the results of the test, although most test results are available within a few days.

HOW IS PERTUSSIS TREATED?

Antibiotics, preferably azithromycin, erythromycin, and clarithromycin are used to treat the disease. During this time, the ill individual should remain at home to reduce the spread of the disease.

HOW CAN I HELP PREVENT PERTUSSIS?

The vaccination against pertussis is included in the DTaP, DTP and Tdap vaccines. Pertussis is the "P" part of the vaccine. Children under 7 years of age should get 5 doses of the DTaP/DTP vaccine--at 2, 4, 6, and 12-15 months, and at 4-6 years of age. 7-9 year old children should get vaccinated with Tdap if they did not complete their primary series. Individuals 10 years and older should get one booster dose of Tdap if they have not previously received a Tdap. Pregnant women should be immunized during the late second or third trimester of each pregnancy to help protect their newborn infants irrespective of prior history of receiving Tdap.

What if I was exposed to someone diagnosed with pertussis?

- Talk to your doctor, nurse, or clinic as soon as you learn that you have been exposed. You may be given antibiotics to treat your infection and make the infection less serious, especially if you start it early. Try to stay away from other people until you have completed the first 5 days of treatment (or until another diagnosis for the cough is given and you know that you are not contagious).

What should I do if I think someone in my family has pertussis?

- If you think you or one of your family members has whooping cough, call your doctor, nurse, or clinic and ask to be evaluated for whooping cough. Anyone that might have whooping cough should stay away from other people until the illness is treated (or another diagnosis for the cough proves it's not contagious).

When can my child return to school/return to childcare?

If your child has been diagnosed with whooping cough by their doctor:

- Tell the school that a doctor diagnosed your child with whooping cough.
- School officials may request that you keep your child home from school and activities, such as sports or play groups, until your child has been on appropriate antibiotics for five days to treat whooping cough.
- Ask your child's doctor for a note that states your child has whooping cough.

If your child's doctor says your child does NOT have whooping cough:

- Ask for a note from the doctor telling the school that your child's cough is NOT whooping cough and that your child can return to school and other activities at any time.

Pertussis is a Washington State reportable disease and must be reported to your local health department in Lewis County, contact Communicable Disease Surveillance and Response at 360-740-1223 during business hours or 360-740-1105 after hours and ask to speak with the health officer.



DOES MY CHILD NEED TO STAY HOME FROM CHILDCARE/SCHOOL?

YOUR CHILD SHOULD NOT ATTEND CHILDCARE/SCHOOL IF ONE OF THE FOLLOWING APPLIES:

- They have been diagnosed with pertussis and have not yet completed antibiotic treatment.
- They do not feel well enough to participate in classroom activities.

How to reach us:

Lewis County Public Health & Social Services

(360) 740-1223

360 NW North St.,
Chehalis, WA 98532

communityservicesdivision@lewiscountywa.gov

Visit our website for information about our department and past newsletters:

www.lewiscountywa.gov/departments/public-health/community-health/



Find us on Facebook:
www.facebook.com/lcp_hss/



For Immunization Information, visit:

www.lewiscountywa.gov/departments/public-health/immunization-information/



This newsletter features QR codes. Utilize your camera to scan these codes, which will direct you to the corresponding links or websites.



Please visit our website for additional Quick Info Series sheets:
www.lewiscountywa.gov/departments/public-health/community-health/quick-info-series/



Lewis County Public Health & Social Services Community Newsletter

Winter 2024

News & Updates:

School Garden Survey Report



Nature Nurture Farmacy, Blue Zones Activate Lewis County, and Lewis County Public Health conducted the survey to gather information about Lewis County school gardens and other growing spaces.

39 SURVEY RESPONSES **80% OF SCHOOLS PARTICIPATED**

Twenty-eight schools participated. People who took the survey were teachers (13), other school staff (10), school administrators (8), other support organizations (4), and volunteers (4).

53%
of schools
have a garden

40% of Elementary Schools
50% of Middle Schools
66% of High Schools

MOST GARDENS HAVE BEEN OPERATING FOR 1-3 YEARS

67% Have a greenhouse
47% Have raised beds
40% Have planters/pots
33% Have in-ground areas

MOST SCHOOLS GROW VEGETABLES, HERBS & FRUITS.



87% OF SCHOOLS USE THE GARDEN TO SUPPORT STUDENT LEARNING

However, less than half of schools reported that most students visit the garden for instruction each year. Only two schools said they don't use their garden to support student learning. One cited a lack of instructional resources and professional development opportunities. The other school said it would be challenging to manage with their school size.

50% OF EDUCATORS HAVE NOT RECEIVED GARDEN-BASED TRAINING IN THE LAST 3 YEARS

About 86% of people said they'd like to see training on garden-based instruction. Many were also interested in training on gardening skills (64%) and outdoor classroom management (50%).

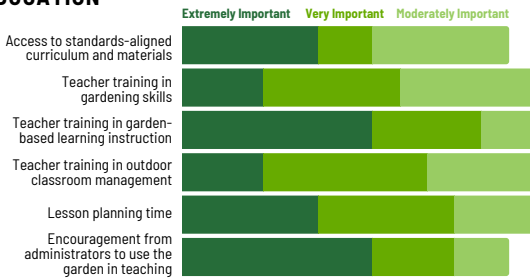
MOST SCHOOLS WITH A GARDEN SAW:

- Increased community spirit
- Increased social skills
- Improved attitude toward school
- Increased environmental attitudes
- Increased self-confidence
- Increased leadership skills



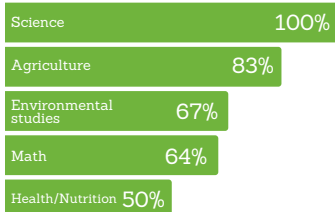
Participants not only saw these positive changes in students, but believe improved social skills, increased environmental attitudes, and increased attitudes toward school were very important.

THESE ARE IMPORTANT IN SUPPORTING GARDEN-BASED EDUCATION *



* Among schools that currently have a garden

MOST COMMON SUBJECTS TAUGHT IN THE GARDEN



Most garden-related learning happens during class and is taught by school teachers. Most use self-created lesson-plans. Some use textbooks, materials from websites, or workshops.

3 SCHOOLS HAVE A FARM TO SCHOOL PROGRAM



3 SCHOOLS HAVE PAID STAFF (EXCLUDING TEACHERS)



ABOUT HALF OF GARDENS REPORTED A BUDGET OF

\$600 OR LESS

Most rely on school or district funds (67%). However, some also receive individual donations (33%), grants (25%), or community/business donations (25%).

Most schools (57%) did not receive any funding to start their garden.

BARRIERS TO HAVING AND USING A SCHOOL GARDEN

Schools who have never had a garden have cited a variety of barriers to not having one, including a lack of funding, staff, and space. Schools that previously had a garden but don't use it anymore most frequently cited a loss of garden leaders, volunteers, and funding as the reason for discontinued use.

6 SCHOOLS HAVE NEVER HAD A GARDEN BUT EXPRESSED STRONG INTEREST IN ONE

6 SCHOOLS DON'T HAVE A GARDEN ANYMORE

4 EXPRESSED INTEREST IN HAVING A GARDEN AGAIN

SCHOOL GARDEN PROJECT

The Lewis County Public Health & Social Services, Health Promotion Team in partnership with Nature Nurture Farmacy and Blue Zones, will be launching the School Garden Project, which aims to boost the number of schools utilizing growing spaces and integrating garden and plant-related education into their classrooms.

We plan to assist schools and individual teachers that wish to initiate or enhance their growing areas by offering resources, curriculum, and mentoring opportunities.

In our view, a "garden" can take various forms, from raised beds to a greenhouse, to pots with plants placed by a window. We hope to support schools wherever they're at -- whether that involves helping teachers integrate plant-based learning activities, establishing a small classroom garden, or setting up a raised bed.





Lewis County Public Health & Social Services Community Newsletter

Winter 2024

News & Updates:

The VFC program celebrates 30 years!

The Vaccines For Children (VFC) program was initiated in 1994 by first lady of Arkansas, Betty Bumpers and first lady of the United States, Roslyn Carter. This initiation was primarily in response to significant measles outbreaks that occurred in the late 1980s and early 1990s. Through community outreach, they discovered that many people were either unable to afford vaccines or that these vaccines were not easily accessible in certain areas.

The VFC program offers all vaccines recommended by the Advisory Committee on Immunization Practices (ACIP) from the federal government to states at no cost, enabling low or no-cost vaccinations for children aged 18 and under who are covered by Medicaid, uninsured, underinsured, or are Alaskan Native/American Indian. Additionally, it ensures that no established patient can be turned away due to an inability to pay for the administration of VFC vaccines. However, children with private insurance or those enrolled in the Children's Health Insurance Program (CHIP) do not qualify for VFC, which means providers in most states must maintain a separate stock of vaccines for those who are ineligible. Washington stands out as one of only ten states that provide universal vaccine coverage for all children aged 18 and under. This means every child in Washington receives the same vaccines, regardless of their VFC eligibility, significantly reducing the burden on healthcare providers by allowing them to manage a single vaccine stock. This universal coverage is funded through the Washington Vaccine Association (WVA), established by the state legislature in 2010. The WVA collects funds from private insurance companies to cover the costs of vaccines administered to privately insured children, ensuring continuous support for the VFC program.

Since its inception in 1994 through 2023, the VFC program has delivered over 74 million vaccines to healthcare providers nationwide, preventing approximately 508 million vaccine-preventable illnesses. In Lewis County, several providers participate in the VFC program, including NW Pediatrics, Chehalis Children's Clinic, Arbor Health clinics in Packwood, Randle, Morton, and Mossyrock, Valley View clinics in Chehalis, Onalaska, Toledo, and Winlock, and Providence Chehalis Family Medicine.

For a comprehensive list of all VFC vaccines & their recommended ages, visit:
www.cdc.gov/vaccines-children/schedules



To check your child's vaccination history & access their vaccine records, visit:
MyIRmobile.com



Adult Family Homes are you ready for this season's flu and COVID at your site? How do you protect your staff and residents from an outbreak?

Residents and staff in adult family homes (AFH) in Washington State remain vulnerable to the impacts of disease outbreaks, especially larger ones classified as epidemics. In Washington, AFHs must apply the same infection control measures as larger healthcare facilities.

Our Public Health Nurse has an Epidemic Preparedness Plan customized for AFH and it's ready for you to use right now. It covers: Assessment & Planning, Procedures, Communication Plan, Training, Emergency Contact Lists and examples of how to set up a room for a COVID positive resident. References on Hand Hygiene, Donning and Doffing personal protective equipment for staff and more!

Contact Teresa Ramsey, RN, for more information at teresa.ramsey@lewiscountywa.gov

2024 Family Health Survey Report

The Fall Newsletter highlighted the findings of the 2024 Family Health Survey, a requirement of the Maternal Child Health Block Grant, which is a grant that funds state and local activities to improve the health of women, infants, children, youth, and their families. The goal of our survey was to better understand the needs of families in our community.

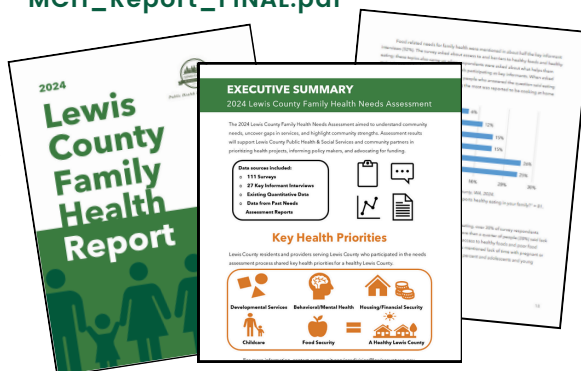


The final report is now complete and available for viewing on our website.

For those who took the time to share your experience and perspective, we thank you!

Find the final report at:

www.lewiscountywa.gov/media/documents/2024__MCH_Report_FINAL.pdf



For additional reports, visit:
lewiscountywa.gov/departments/public-health/community-health/assessment/



News & Updates:



Washington State's New Foodborne Illness Notification System (FINS)

Foodborne illness, commonly known as food poisoning, is caused by eating or drinking contaminated foods or beverages. Although it's preventable, one-in-six Americans gets food poisoning every year. People over 65, children under 5, and people who are pregnant or immunocompromised have an increased risk of severe illness. FINS is a one-stop shop to help local health jurisdictions identify the source of food-related illnesses and respond faster to outbreaks.

How to report with FINS in three easy steps:

1. Submit through the FINS website if you have a:
 - a. Case or suspected case of foodborne illness. Symptoms include nausea, vomiting, diarrhea, stomach pain, or fever.
 - b. Food-related concern at an establishment such as a restaurant, grocery store, food truck, group event, or food delivery service. You can anonymously report what you saw, such as bad food handling, pests or rodents, a sick food worker, a facility sewage issue, or intentional contamination.
2. FINS sends your concern to the local authority. Once you submit your report using the form on the FINS webpage, an email notification is sent to the local health jurisdiction.
3. The local health jurisdiction reviews your FINS report. All concerns are reviewed. Local health jurisdictions have different methods to analyze reports to determine if further action is needed. Responding to outbreaks may involve contacting the food establishment, interviewing food workers, conducting an inspection, or contacting the person who reported the concern to gather additional information.

Foodborne illnesses can cause severe sickness and even death, but outbreaks often go unreported. Reporting using FINS is the best way to ensure action can be taken to promote food safety in Washington. FINS is not a replacement for medical care, seek medical care if you are ill.

To report an illness or complaint and for more information, visit:
www.doh.wa.gov/you-and-your-family/illness-and-disease-z/foodborne-illness



SNAP Produce Match

Shoppers who use Supplemental Nutrition Assistance Program (SNAP)/EBT benefits can stretch their food budget to buy more fruits and vegetables with SNAP Produce Match at participating grocery stores!

Here's how it works:



Buy at least \$10 of fresh, frozen or canned fruits and vegetables with your EBT card.



Save the coupon that prints on the bottom of your shopping receipt.



Use the coupon for \$10 off your next purchase of fresh, frozen and canned fruits and vegetables.



Lewis County has two SNAP Produce Match participating Stores:

Safeway 1129 Harrison Ave
Centralia
&

Safeway 1100 S. Market Blvd
Chehalis





Lewis County Public Health & Social Services Community Newsletter

Winter 2024

Resources:

Lewis County WIC Program



Women, Infants, and Children (WIC) is a supplemental nutrition program where families can get healthy food and a lot more. WIC is for pregnant people, new and breastfeeding parents, infants, and children under age 5. For more information and eligibility, visit:
<https://lewiscountywa.gov/departments/public-health/wic/>



Lewis County Animal Shelter



Looking to add a furry addition to your family? Our animal shelter has cats and dogs needing a loving home. For more information, visit:
www.lewiscountywa.gov/departments/public-health/animal-shelter/
Click "Adopt a dog" or "Adopt a cat," to see current available pets.

Nurse Family Partnership



Nurse Family Partnership is a free program for pregnant women who are welcoming a new baby. Any women who is pregnant and meets income requirements can apply. When you enroll, you will be connected to a free personal nurse who will provide support, advice and information you need to have a healthy pregnancy, a healthy baby and be a great parent. For more information visit:
www.nursefamilypartnership.org or call/text: (360)280-7418

Nurture Northwest Lewis County



Family Education & Support Services
First Thursday of every month from 5-6pm at the Child Development Center, Children's Lab School 412 S Oak St Centralia. Third Thursday of every month from 4-5pm at 443 Main Ave Morton. To sign up or for more information, contact Taylor: taylorb@familyess.org
And visit their Facebook site: www.facebook.com/people/Nurture-Northwest-Lewis-County/61553340061150/

Holiday Resources:

The Forgotten Children's Fund



Provides a Christmas experience for families in need. This includes a visit to your home from Santa and his team of elves who will deliver gifts and warm coats for your children, blankets and a food box to your family on Christmas Eve or Christmas Day. *Applications must be received no later than December 16. The sooner you apply, the more likely you will be helped this year.

For more information, visit:
www.forgottenchildrensfund.org/request-help



Lewis County Toys for Tots



To request a toy, donate or find toy donation locations, visit:
<https://chehalis-wa.toysfortots.org/local-coordinator-sites/lco-sites/default.aspx?nPageID=0&nPreviewInd=0&nRedirectInd=3>





Lewis County Families

CHRISTMAS TOY SIGN-UP

FAMILIES WITH CHILDREN 18 YEARS OLD AND UNDER, STILL LIVING AT HOME ARE WELCOME TO SIGN-UP FOR CHRISTMAS ASSISTANCE.*

WE WILL CONTINUE TO SCHEDULE APPOINTMENTS FOR INTAKE UNTIL ALL APPOINTMENTS HAVE BEEN FILLED.

CALL (360) 736-4339 TO SET UP AN INTAKE APPOINTMENT.

YOU WILL NEED THE FOLLOWING INFORMATION TO SIGN UP:
IDENTIFICATION FOR HEAD OF HOUSEHOLD
VERIFICATION OF ADDRESS
PROOF OF DATE OF BIRTH FOR ALL APPLICANTS

*DUE TO LIMITED RESOURCES IT IS A FIRST COME, FIRST SERVED BASIS UNTIL WE HAVE REACHED OUR CAPACITY FOR THIS YEAR. PLEASE VISIT FACEBOOK FOR ANY CHANGES OR UPDATES. [HTTPS://WWW.FACEBOOK.COM/CENTRALIASALVATIONARMY](https://www.facebook.com/CENTRALIASALVATIONARMY)



Lewis County Public Health & Social Services Community Newsletter

Winter 2024

Upcoming Community Events:

74th Annual Santa Parade



Dec 7th in Downtown Chehalis on Boistfort Street. Rock n' Roll themed Parade starts at 11:00am Hosted by Centralia-Chehalis Chamber of Commerce. For more information: www.chamberway.com/events/annual-santa-parade/

Napavine Lighted Christmas Parade



The Napavine Funtime Festival presents the Lighted Christmas Parade, downtown Napavine. December 7th at 6pm. For more information, visit: www.facebook.com/people/Napavine-Funtime-Festival/61559134260072/?mibextid=LQQJ4d



Borst Park Drive-Thru Lights

View displays of colorful animated and stationary lights from the comfort of your vehicle. The Borst Park drive-thru light display will open for the Christmas season on Friday Dec 6th and run through Dec 25th. Open from 5:00-9:00pm \$7.00 per car (Cash Only). Admission costs help raise money for local nonprofit organizations and non-perishable food donations are given to local food banks.

Community Caroling



For more information about downtown Centralia caroling, visit: www.facebook.com/events/411835358600896/411835368600895/



Willy Wonka Jr.

OnStage Youth Theater Education Program presents: Willy Wonka Jr. at the Roxy Theater. For tickets and more information, visit: www.mortonroxy.org/#




For more information, visit: www.centraliadowntownfestivals.com/christmas_market

Leaf Exchange Day 2024

Rake up and bag your leaves so gardeners and composters can put them to good use. Bagged leaves may be dropped off on the event day. Leaves will be available for pickup Dec 7, 10am-4pm, on a first-come, first-served basis, while supplies last. WSU Lewis County Master Recycler Composter volunteers will be on hand to inspect leaves and help the event run smoothly. The event is across the street from its normal location and will be a drive-through event at the Floral Park Sustainability Project at the corner of Floral Street and South Tower Avenue in Centralia. No garbage, other yard waste, or leaves from black walnut trees accepted. While this event is a free community service, volunteers will accept donations to support their educational programs, their future tool lending library, and community workshops. Anyone with questions can call 360-740-1216 or email jason.adams@lewiscountywa.gov.

Packwood Holiday

Packwood is hosting a weekend of Christmas fun Dec 7-8th. Events include Christmas in the Park, Caroling, Lighting Town Christmas Tree, Spaghetti Dinner, Holiday Bazaar & an appearance by Santa.



For more information, visit: Packwood Community Group Facebook at: www.facebook.com/groups/1848097495244345 or Packwood Improvement Club at: www.packwoodimprovementclub.com/



If you have a community event you'd like to share, please email: Alisha.Griffith@lewiscountywa.gov



Upcoming Community Events:

Christmas at Borst Home Museum

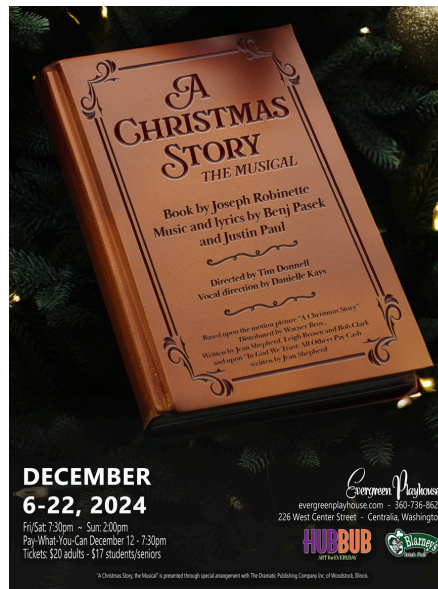
Christmas at Borst Home Museum, One Room Schoolhouse & Pioneer Church is a Christmas to remember for all ages. Crafts from our past at the One Room Schoolhouse with a play and Christmas Carols at the church. Many festivities. Come and enjoy this free event on December 14th, 1:30 pm – 3:30 pm, at the Historic Borst Home Museum in Centralia.

For more information, contact: Beverly York (360)264-2923 or visit: www.lewistalk.com/event/christmas-at-borst-home-museum-2/?instance_id=34623

A Christmas Story, the Musical

Set in the 1940s in the fictional town of Hohman, Indiana, the musical follows 9-year-old Ralphie Parker and his quest for the Holy Grail of Christmas gifts—an Official Red Ryder carbine-action 200-shot Range Model air rifle. For more information, showtimes and ticket information, visit:

www.evergreenplayhouse.com/events/story



**DECEMBER
6-22, 2024**

Fri/Sat: 7:30pm – Sun: 2:00pm
Pay-What-You-Can December 12 – 7:30pm
Tickets: \$20 adults - \$17 students/seniors

Evergreen Playhouse
evergreenplayhouse.com - 360-736-8628
226 West Center Street - Centralia, Washington



"A Christmas Story the Musical" is presented through special arrangement with The Dramatic Publishing Company Inc. of Woodstock, Illinois.

Timberland Regional Library TEEN TIME

Packwood Timberland Regional Library presents: TEEN TIME. Join us on the first and third Fridays for activities and pizza! This event is open to teens ages 12 to 18 years old.

Friday December 6th, 1:30–5:00pm
Friday December 20th, 1:30–5:00pm
109 Main Street West, Packwood

For more information, visit:
<https://timberland.bibliocommons.com/events/651e06022d0219cf8b5f429d> or call (360)494-5111



Merry Grinchmas Bingo & Auction

For more information, visit:
www.facebook.com/events/894019462793821/?active_tab=discussion

Timberland Regional Library Kids Create-Shrinky Dinks for Children Grades 1-6

Chehalis Timberland Regional Library presents: Kids Create- Shrinky Dinks. Miniaturize your artwork and turn your creations into keychains, earrings, magnets, and more with the power of shrinky dinks! Materials provided while supplies last. Friday December 13th from 4:00–5:00pm Chehalis TRL 400 N. Market Boulevard, Chehalis

For more information, visit:
<https://timberland.bibliocommons.com/events/671921f9e39a442f00aa435e> or contact: Samantha at (360)748-3301



15th Annual Lighted Tractor Parade

Saturday Dec 14th, 4:00–6:00pm in Historic Downtown Centralia. Tractors adorned with twinkling lights parade through the streets, transforming downtown into a luminous winter wonderland. This cherished tradition brings the community together for a night of festive cheer. For more information, visit: www.downtowncentralia.org/events/15th-annual-lighted-tractor-parade



If you have a community event you'd like to share, please email: Alisha.Griffith@lewiscountywa.gov



Lewis County Public Health & Social Services Community Newsletter

Winter 2024

Upcoming Community Events:

Lewis County Parent to Parent- Coffee and Conversation



Take a break and join others "who get it" for some coffee and conversation! Lewis County Parent to Parent is a community of families raising children (of all ages) with a disability or special healthcare need. It's an opportunity for parents/caregivers to gather, to speak candidly, and to share their struggles and strategies as they raise their children. Every 3rd Tuesday from 9:30-11:00 am. Hosted at Mint City Roasting 539 N Market Blvd Chehalis. Please call P2P Coordinator Shawna Haller if you have any questions. Office- (360) 736-4359 Cell- (360) 520-9299 For more information, visit: www.facebook.com/events/898823202388510/898823212388509/?active_tab=about&rid=JomnflF12MNdsHQY

Timber River Connection's Holiday Bazaar

Timber River Connections in Winlock is hosting a Holiday Bazaar. December 20-21st, 10-3pm at the Winlock Center 119 SW Kerron St, Winlock. Interested in renting a table? Come stop in. Many vendors already signed up. Will have homemade craft items like knitted items, crochet, kitchen items, handmade jewelry and so much more. Lunch will be available for purchase on site. For more information, contact: Nicole at (360)785-4325 or visit in person from 9am-3pm, Mon-Fri.

Yippee-Ki-Yay Movie Lovers!

McFiler's hosts a December 21st one-of-a-kind night as they screen the ultimate Christmas classic, Die Hard! Sponsored by the talented folks at Centralia Ballet Academy, who will be performing a special, ballet-inspired Die Hard excerpt (because why not mix action with elegance?). Dress in your favorite 80s inspired cocktail attire and enjoy delicious food, raffle and entertainment. For more information, including ticket and menu options, visit: www.mcfilerschehalistheater.com/die-hard



Recycle Christmas Trees & Holiday Lights

Recycle trees at the East Lewis Co. Transfer Station in Morton, too!

Dec. 27-29, 2024; Jan. 3-5 & 10-12, 2025
10 a.m. to 4 p.m. Fridays, Saturdays, Sundays
Sensitive Document Shredding
Jan. 4 from 10 a.m.-1 p.m.

Lewis County Central Transfer Station
1411 S. Tower Avenue, Centralia
(in the parking lot before the gate)

Please ... REMOVE ALL DECORATIONS & TINSSEL

NO FLOCKED OR ARTIFICIAL TREES WILL BE ACCEPTED. We reserve the right to refuse trees that do not comply. You may dispose of flocked, artificial or decorated trees at the transfer station where regular fees will be charged (\$20 minimum for 340 pounds or less). Wreaths must be free of ribbon, wire and decorations. **No trees or wreaths from commercial operations will be accepted.**

Donations Gladly Accepted to Support:
WSU Lewis Co. Master Recycler Composter Volunteer Programs

In cooperation with: **WSU Master Recycler Composters of Lewis County, Pacific Mobile, & Lewis Co. Solid Waste Utility**
Support provided in part by Washington Dept. of Ecology.

Questions? Contact jason.adams@lewiscountywa.gov or 360-740-1216

REDUCE REUSE RECYCLE
WSU programs are available to all without discrimination. Evidence of noncompliance may be reported through your local WSU Extension office.

WASHINGTON STATE UNIVERSITY
LEWIS COUNTY EXTENSION



The Polar Express Train Ride

For more information, visit: www.steamtrainride.com/the-polar-express-train-2024/



Tree & Holiday Light Recycling

www.lewiscountywa.gov/departments/solid-waste/events/christmas-tree-holiday-light-recycling-shortened-schedule-this-year/



Southwest Washington Dance Ensemble 2024-27th Annual Nutcracker

Corbet Theatre Centralia College

Friday, Dec. 20th - 7:30 PM
Saturday, Dec. 22nd - 2:00 & 7:30 PM w/live stream
Sunday, Dec. 23rd - 1:00 & 5:30 PM

Tickets Available:
WWW.SWWDANCE.ORG
SWW Dance Center
Call 360-748-4749

Tickets: 87 Adults
600 Children, Seniors & Military
500 Live Stream

"Play What You Can"
Thursday, Dec 19th - 7:30 PM
Tickets sold at the door - 6:00 PM

After Dec. 19th:
Tickets Available
Online or at Corbet Theatre
Box Office: 3:00 - 7:00 PM

Photo Courtesy of Michelle Green Photography

WAGNER
The Male Family
New Dimension Community LLC
Greg & Chelsea Jones
Schubert's Lily & Helen, Pk.
TVCity
Pawson
Kitty Chronicle
Alma & Anthony Dambach
John L. Scott
power/illumination
MUSIC 638
Theater Group
Mills & Vancouver
SYNAPSE
COURTESY



The Nutcracker Ballet

For more information & tickets, visit: www.swwdance.org/performances

If you have a community event you'd like to share, please email: Alisha.Griffith@lewiscountywa.gov