



2023 Impact Report

Lewis County Public Health & Social Services

Our Mission

Lewis County Public Health & Social Services strives to encourage local, regional, state and national relationships and opportunities to protect, promote and improve the health of our community.

Our Vision

A Safe, Healthy and Thriving Lewis County.

Contact Information

(360) 740-1223

www.lewiscountywa.gov/departments/public-health/

360 NW North Street

Chehalis, WA 9853

Personal & Family Health

Childhood Immunizations



27,024

Childhood immunizations administered at clinics in Lewis County



14

Clinics enrolled in the Vaccines for Children (VFC) Program

Women, Infants and Children (WIC)



2,904

Women, infants & children participated during FFY23



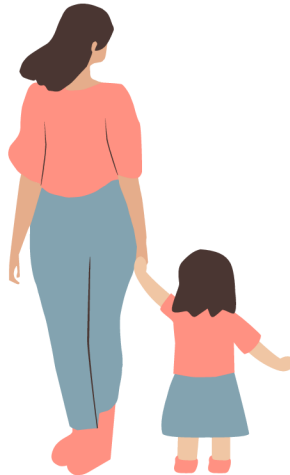
2,097

Infants & children participated



807

Women participated



\$1,471,204

WIC food dollars redeemed

\$4,688

WIC Farmers Market Nutrition Program dollars redeemed

\$407,889

WIC Cash Value Benefits for fruits and vegetables redeemed

Harm Reduction



190

Medicine Lockboxes Distributed



352

Narcan Distributed

Medication Collected & Destroyed

86.2

Lbs. Total



64

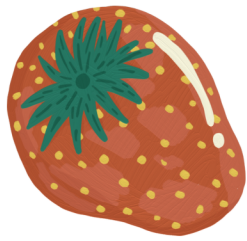
Lbs., Centralia Coalition

22.2

Lbs., Morton UP!

Personal & Family Health

Supplemental Nutrition Assistance Program - Education (SNAP-Ed)



Farm to Community Projects

- Farmers Markets
- Food Systems Improvements

Access to Healthy Foods Project

- Breastfeeding Support

12



Active
Partnerships,
Collaborations,
and Coalitions
in Lewis
County

Veteran's Services

130+

Veterans in Lewis
County assisted



12+

Veteran's Services
provided in Lewis County

Animal Shelter

Cats



Adopted

140 Adults

144 Kittens

Surrendered

66 Cats

28 Litters

Dogs



Adopted

157 Adults

32 Puppies

Surrendered

115 Dogs

9 Litters

Community Health

Birth & Death (Vital) Records



2,321

Birth Certificate
Orders Processed



4,448

Death Certificate
Orders Processed

Notifiable Diseases and Conditions

When a notifiable disease or condition is reported for a resident in our community, staff reach out to them for an interview when necessary. We aim to understand the likelihood of the disease or condition spreading to others, provide education, and case management when appropriate. We also work closely with partners to prevent outbreaks of diseases or conditions and provide resources and support in the event an outbreak occurs. In 2023, Washington State Department of Health investigated Lewis County sexually transmitted infections.

115

Confirmed or
probable cases
investigated

450

Confirmed cases of
reportable diseases

68

Animal bite reports
investigated



Confirmed cases included:

- Campylobacteriosis
- Giardiasis
- Hepatitis A, acute
- Highly antibiotic resistant organism
- Influenza, seasonal
- Legionellosis
- Listeriosis
- Rabies, suspected human exposure
- Shiga toxin-producing Escherichia coli (STEC)
- Salmonellosis
- Sexually Transmitted Infections
- Shigellosis

Sexually Transmitted Infections

277

Chlamydia

26

Herpes Simplex

51

Gonorrhea

22

Syphilis

Environmental Health

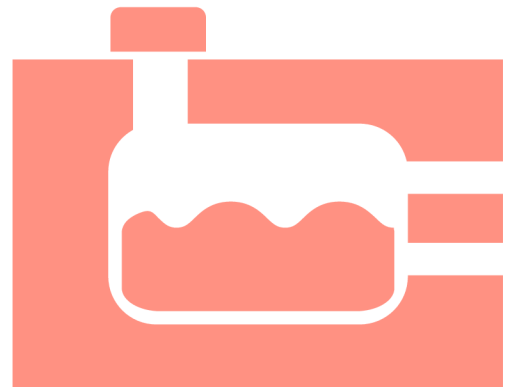
Environmental Health includes the following programs: Septic, Water, Water Lab, Solid/Hazardous Waste, Food, and Septic & Water Permits. These programs promote public health by ensuring safe septic systems, healthy ground water, disease prevention through food services regulations and education, access to drinking water, and drinking water quality monitoring.



3,260 Water samples tested

21 Water supply inspections completed

84 Septic profession certifications processed

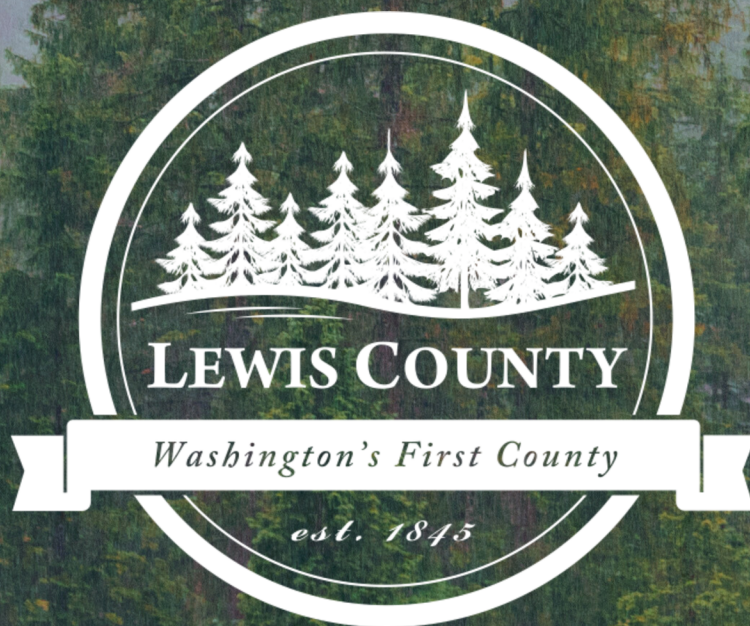


183 Permanent establishments inspected

96 Temporary establishments inspected

For more information on our services, or questions about this report, please contact Lewis County Public Health and Social Services at:

(360) 740-1223
www.lewiscountywa.gov/departments/public-health/
360 NW North Street
Chehalis, WA 9853



Lewis County Public Health & Social Services