



Community Development

2025 NE Kresky Ave

Chehalis, WA 98532

Phone: (360) 740-1146

Comprehensive Plan Periodic Update

Lewis County Planning Commission – Workshop

February 13, 2024



Staff Presentation Agenda

- 1. Big Schedule**
- 2. BOCC/Planning Commission Priorities**
- 3. Community Priorities**
- 4. Next Steps**

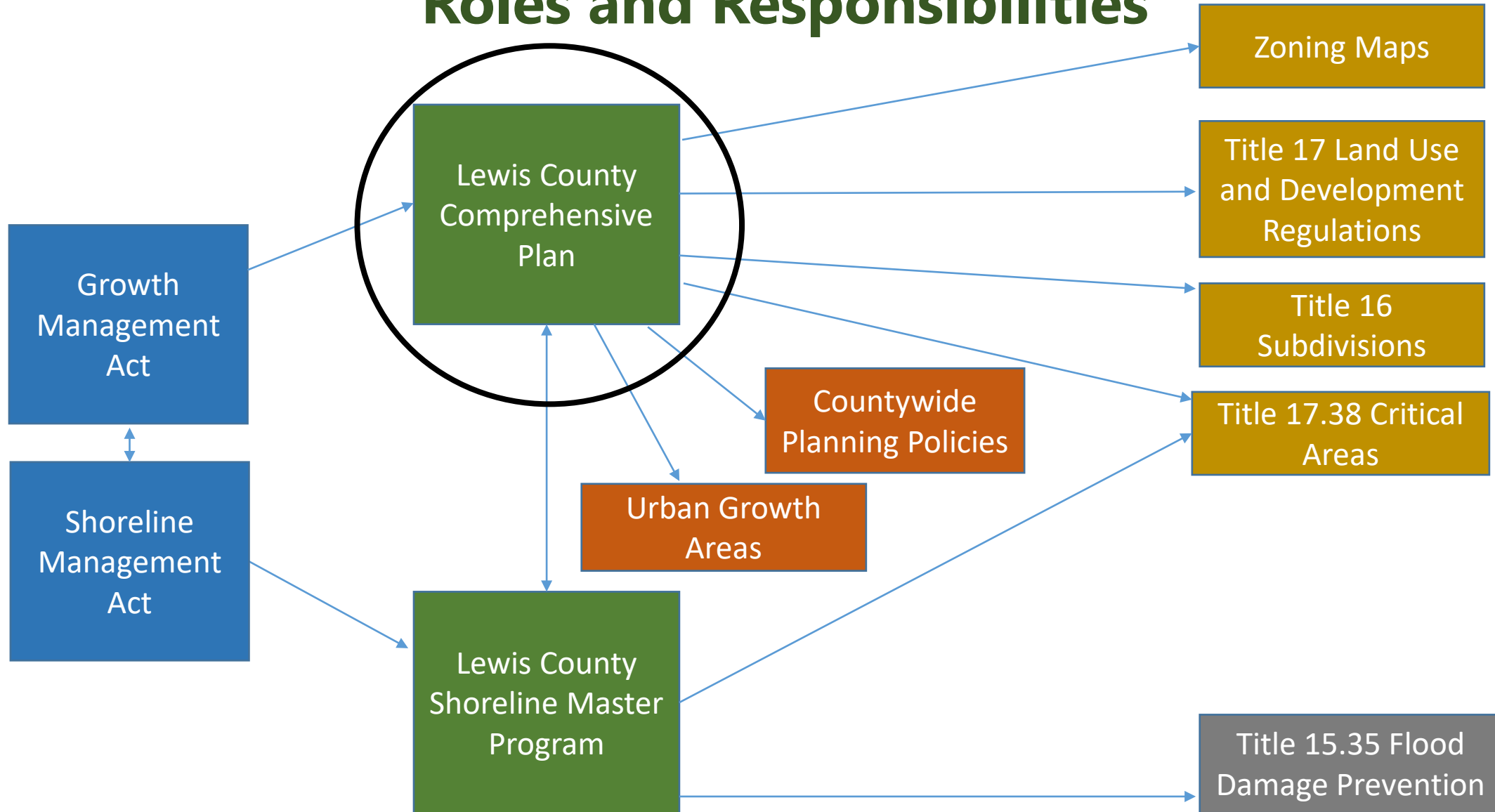


February 13, 2024

Lewis County Planning Commission - Workshop

2

Roles and Responsibilities



Staff Presentation Agenda

1. Big Schedule
2. **BOCC/Planning Commission Priorities**
3. Community Priorities
4. Next Steps



Mandated Updates

- Population – accommodate 20 years population growth
- Housing – plan for housing at all economic levels
- Climate – add a Climate Resiliency Element
- Critical Areas – Update Best Available Science

Any change in policies as the result of above must be implemented by changes in development regulations.

<https://lewiscountywa.gov/departments/community-development/rezones/comprehensive-plan-and-development-regulation-amendments/comprehensive-plan-periodic-update/>



BOCC/Planning Commission Priorities

1. Industrial Lands/Energy
2. Plan for and utilize UGAs**
3. Commercial/industrial jobs along I5
4. Affordable housing**
5. Protect/support farm and forestry lands**
6. Redevelop LAMIRDs
7. Critical areas**
8. Short Term Rentals



BOCC/Planning Commission Priorities

1. Industrial Lands/Energy
2. Plan for and utilize UGAs**
3. Commercial/industrial jobs along I5
4. Affordable housing**
5. Protect/support farm and forestry lands**
6. Redevelop LAMIRDs
7. Critical areas**
8. Short Term Rentals



Top County Priorities

- Packwood Subarea Plan – redevelop LAMIRDs
- Onalaska Subarea Plan – redevelop LAMIRDs
- Industrial Lands Update – industrial lands/energy



High-Level Scope of Work

- Population – accommodate 20 years population growth
- Housing – plan for housing at all economic levels
- Climate – add a Climate Resiliency Element
- Critical Areas – Update Best Available Science
- Packwood Subarea Plan
- Onalaska Subarea Plan
- Industrial Lands Update



Staff Presentation Agenda

1. Big Schedule
2. BOCC/Planning Commission Priorities
3. Community Priorities
4. Next Steps



Community Priorities

1. Adna, October 23, 2023 – no attendance
2. Salkum, November 28, 2023 – 18 attendees
3. Mineral, November 30, 2023 – 37 attendees
4. South County, December 28, 2023 – 19 attendees
5. Randle, January 29, 2023 – 12 attendees



Community Priorities



February 13, 2024

Lewis County Planning Commission - Workshop

13

Community Priorities

1. Maintain Rural Character
2. Increase Affordable Housing Options
3. Expand Infrastructure and Services
4. Transportation
5. Government Efficiencies



Staff Presentation Agenda

1. Big Schedule
2. BOCC/Planning Commission Priorities
3. Community Priorities
4. Next Steps



Periodic Update *DRAFT* Schedule

	2024						2025											
	JAN	FEB	MAR	APR	MAY	JUN	JUL	AUG	SEP	OCT	NOV	DEC	JAN	FEB	MAR	APR	MAY	JUN
Public Engagement Plan	Light Blue	Dark Blue																
Land Capacity Analysis			Light Blue	Light Blue	Dark Blue													
Housing Needs Assessment			Light Blue	Light Blue	Dark Blue													
Comprehensive Plan			Light Blue	Light Blue	Light Blue	Dark Blue		Light Blue	Light Blue	Light Blue	Light Blue	Dark Blue	Green	Orange				
Capital Facilities Plan			Light Blue	Light Blue	Light Blue	Dark Blue		Light Blue	Light Blue	Light Blue	Light Blue	Dark Blue	Green	Orange				
Critical Areas Ordinance				Light Blue	Light Blue	Light Blue	Light Blue	Dark Blue		Light Blue	Light Blue	Light Blue	Dark Blue	Green	Orange			
Packwood Subarea Plan				Light Blue	Light Blue	Light Blue	Light Blue	Light Blue	Light Blue	Light Blue	Dark Blue	Green						
Onalaska Subarea Plan	Light Blue	Light Blue	Light Blue	Light Blue	Light Blue	Light Blue	Light Blue	Light Blue	Light Blue	Light Blue	Light Blue	Dark Blue	Green					
Industrial Land Update			Light Blue	Light Blue	Light Blue	Light Blue	Light Blue	Light Blue	Light Blue	Light Blue	Light Blue	Light Blue	Dark Blue	Green				
Development Regulations											Light Blue	Light Blue	Light Blue	Light Blue	Dark Blue	Green		Orange
	Light Blue	Staff working, public engagement, updates to Planning Commission																
	Dark Blue	Planning Commission Works on Draft																
	Green	Planning Commission Hearing																
	Orange	BOCC Adoption																



What staff needs from Commissioners ...

1. Read everything we send you
2. Write down your questions
3. Send me your questions ahead of time
4. Think through your comments
5. Be prepared for discussion

Call me!





**This Slide Intentionally
Left Blank**