



PACKWOOD AIRPORT AIRPORT MASTER PLAN

*Planning Advisory Committee Meeting #3
December 5, 2023*

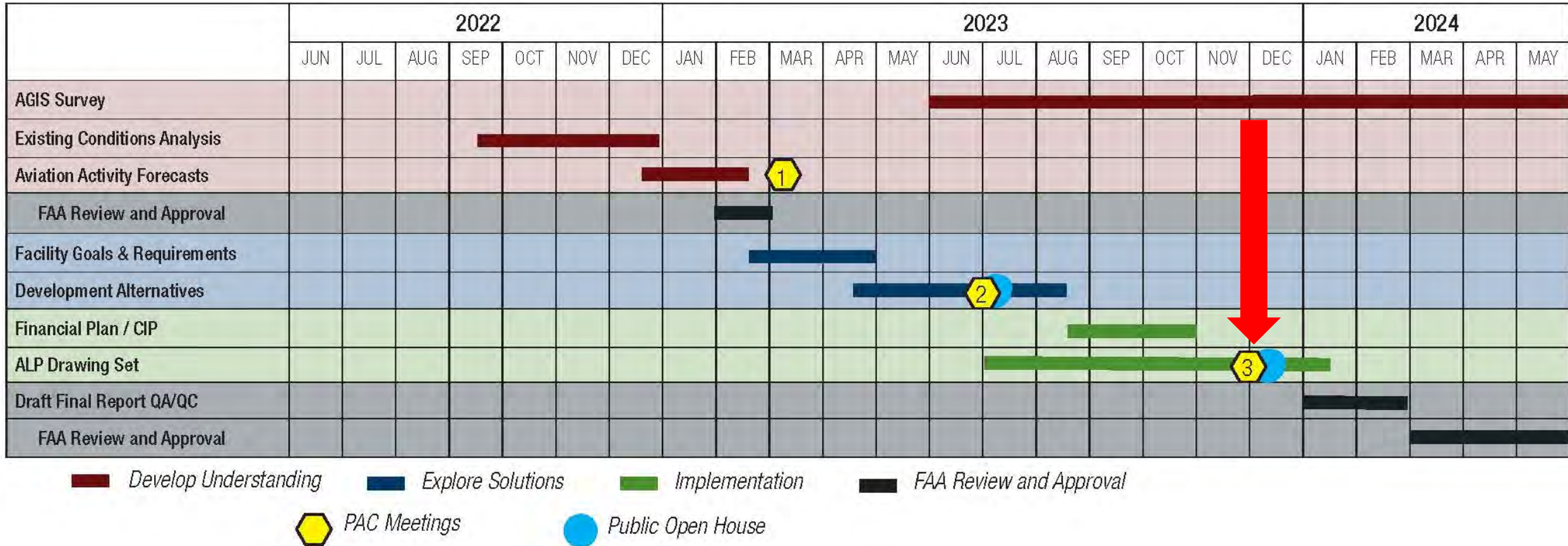
AGENDA

- Introductions
- Project Schedule – Where we are
- Brief Recap
- Preferred Development Alternative
- Capital Improvement Program (CIP)
- Airport Layout Plan
- Terminal Area Plan
- Looking Ahead
- Questions?





PROJECT SCHEDULE – WHERE ARE WE AT?



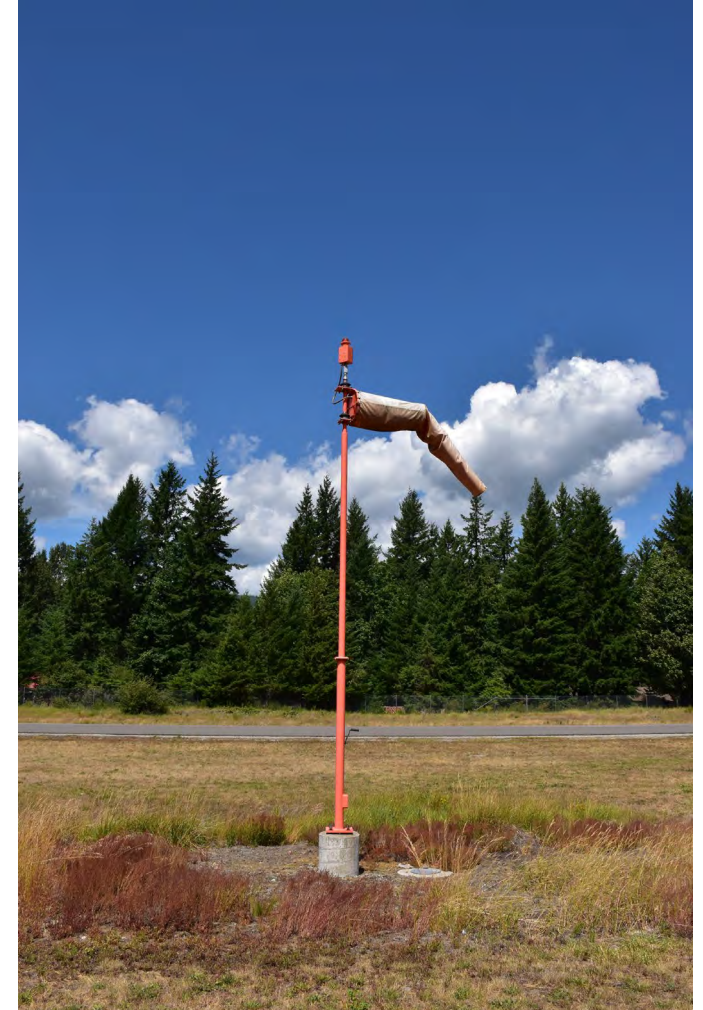
BRIEF RECAP

- Identified current and future facility needs
- Presented proposed improvements at the last PAC meeting
- Incorporated input from the public to help identify a preferred alternative that meets FAA requirements
- Refined the concepts for the updated ALP (recommended preferred alternative)



BRIEF RECAP

- Prepared updated engineering cost estimates for each project
- Updated the 20-year CIP to identify project priorities and project eligibility
- Currently working on updates to the ALP drawing set (12 sheets)



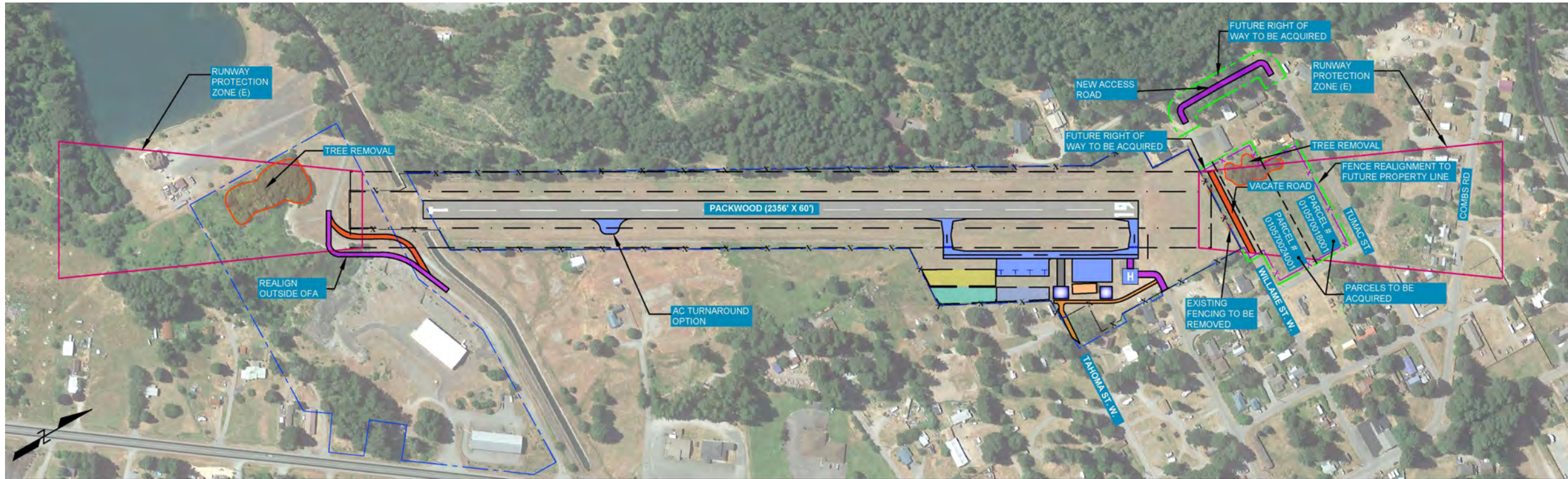
PREFERRED AIRSIDE ALTERNATIVE

Key Features

- Paved Parallel Taxiway (partial length) and Access Taxilanes to AC Parking
- Aircraft Turnaround on Runway
- Road Realignments - Both Ends of Runway (OFA, RPZs)
- Obstruction Removal (Trees – Inner Approach Surfaces)



PREFERRED DEVELOPMENT ALTERNATIVE AIRSIDE



PREFERRED LANDSIDE ALTERNATIVE

Key Features

- Paved Aircraft Tiedown Apron
- Paved Transient Helicopter Parking Apron
- Hangar Development Sites
- Paved Access to Helicopter Parking (emergency Medevac)
- Second Airport Entrance (Tahoma Street)
- Vehicle Parking and Internal Access Road (Gravel)
- Hangar and Aircraft Parking Reserves





CAPITAL IMPROVEMENT PLAN (CIP)

Project #	Short Term Projects (2023-2027)	FAA	Local	Total Project Costs
1	Environmental - Partial Length Parallel Taxiway, Tiedown Apron, and Helicopter Parking	\$161,700	\$17,966	\$179,666
2	Design - Partial Length Parallel Taxiway, Tiedown Apron, and Helicopter Parking	\$342,804	\$38,089	\$380,893
3a	Construction - Tiedown Apron	\$651,543	\$72,394	\$723,937
3b	Construction - Partial Length Parallel Taxiway	\$1,372,851	\$152,539	\$1,525,390
3c	Construction - Helicopter Parking Apron	\$509,757	\$56,639	\$566,396
4	Tree Removal (South Approach)	\$84,348	\$9,372	\$93,719
SHORT-TERM TOTAL (1-5 Years)		\$3,123,002	\$347,999	\$3,470,001



CAPITAL IMPROVEMENT PLAN (CIP)

Project #	Long Term Projects (2028-2043)**	FAA	Local	Total Project Costs
5	Main Entrance Vehicle Access Gate Replacement (Automated)	\$123,503	\$13,723	\$137,226
6	Secondary Vehicle Access Gate (Automated)	\$116,864	\$12,985	\$129,849
7	Terminal Area Internal Access Road Design and Construction	\$82,834	\$9,204	\$92,038
8	South Road (Gravel) Realignment (Outside of OFA)	\$110,230	\$12,248	\$122,478
9	Vacate <u>Willame</u> Street (300' @ North Runway End) /Construct New Connection between west end of <u>Tumac</u> and <u>Willame</u> Streets, west of runway	\$1,103,833	\$122,649	\$1,226,482
10	Aircraft Turnaround (southern 1/3 of runway)	\$631,427	\$70,159	\$701,586
11	Runway 1/19 Maintenance – <u>Sealcoat</u> , Crack fill, and Markings	\$497,431	\$55,270	\$552,701
12	Paved Pad for Existing Hangar	\$772,166	\$85,796	\$857,962
13	Runway 1/19 Overlay and Markings	\$1,068,392	\$118,711	\$1,187,103
14	<u>MIRL</u> Replacement (LED)	\$855,232	\$95,026	\$950,258
15	Taxiway and Apron Maintenance – <u>Sealcoat</u> , Crack fill, and Markings	\$347,117	\$38,569	\$385,686
16	Beacon Replacement (LED)	\$408,577	\$45,398	\$453,975
17	Supplemental Lighted Wind Cones	\$201,191	\$22,355	\$223,546
18	Airport Wildlife Fencing Replacement	\$1,107,387	\$123,043	\$1,230,430
19	Taxiway and Apron Maintenance – <u>Sealcoat</u> , Crack fill, and Markings	\$347,117	\$38,569	\$385,686
20	Tree Removal (North Approach)	\$54,000	\$6,000	\$60,000
LONG-TERM TOTAL (6-10 Years)		\$7,827,304	\$869,701	\$8,697,006
20-YEAR CIP TOTALS		\$10,950,306	\$1,216,701	\$12,167,007

RECOMMENDED IMPROVEMENTS (2023 UPDATE)

Longer Term Improvements (6-20 years)

- **\$7.8 million Federal Eligible / \$870k Local / State**
 - Replace Main Street Gate (automated)
 - Internal Access Roads
 - Local Road Realignment (at runway ends)
 - Aircraft Turnaround (Runway)
 - Supplemental Wind Cone



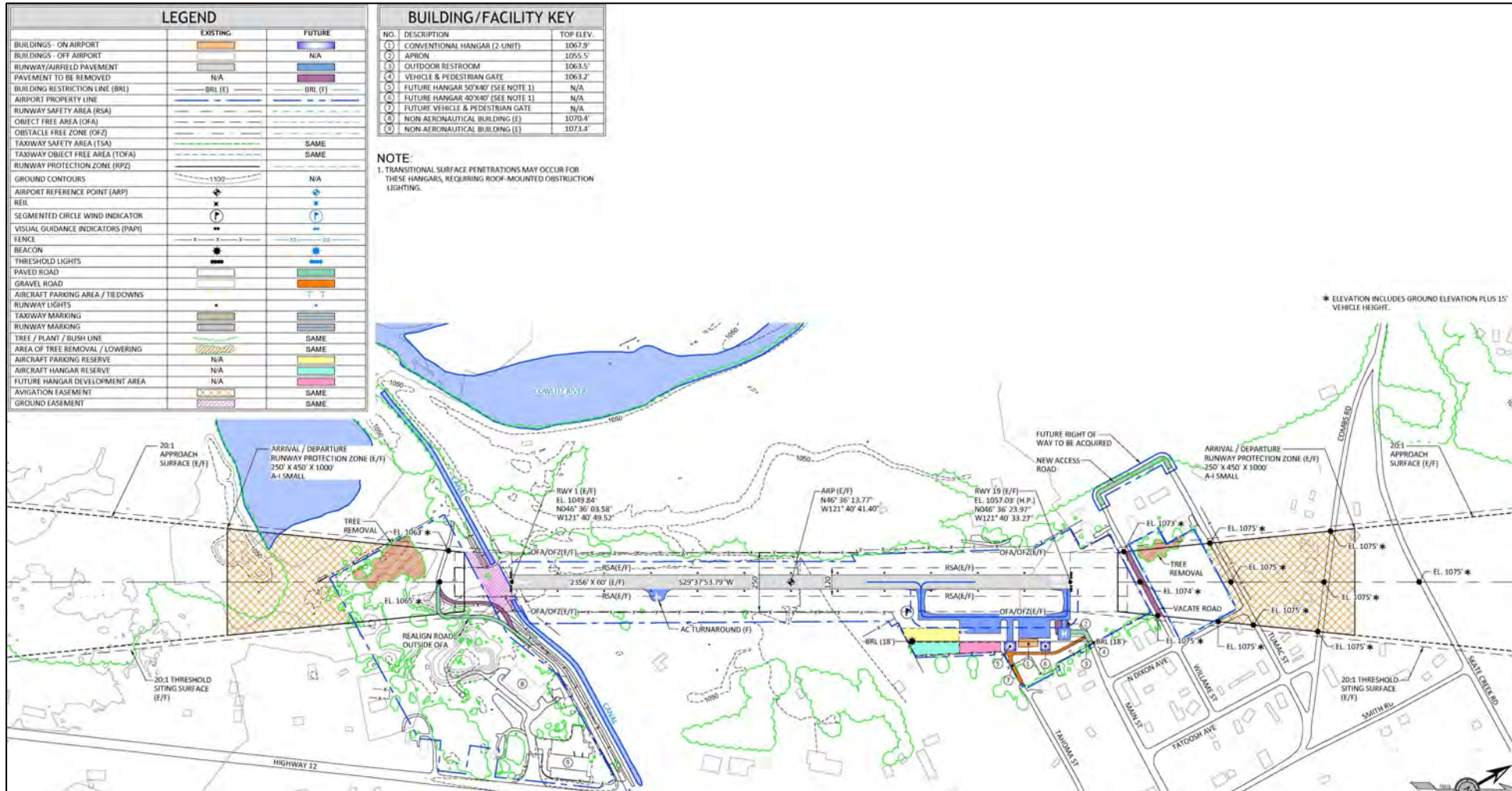
RECOMMENDED IMPROVEMENTS (2023 UPDATE)

Longer Term Improvements (6-20 years)

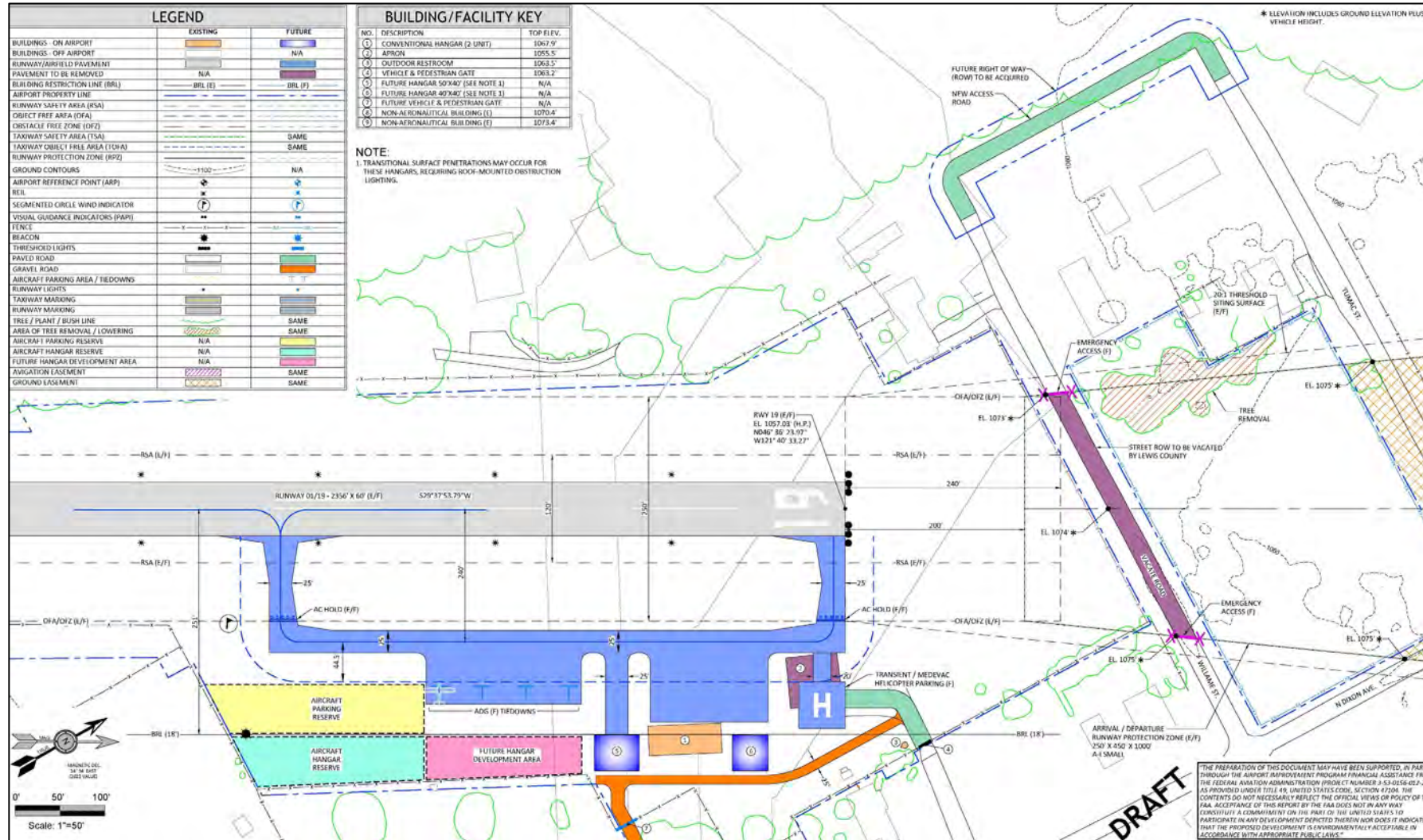
- Hangar Site Improvements
- Pavement Maintenance
- Runway Overlay
- Wildlife Fence Replacement



AIRPORT LAYOUT PLAN



TERMINAL AREA PLAN



QUESTIONS?

David Miller, AICP – dmiller@centurywest.com

Samantha Peterson – speterson@centurywest.com

LOOKING AHEAD

- Submit Draft Airport Layout Plan (ALP) set and Draft Airport Master Plan (AMP) Report to Lewis County for review
- Submit Draft ALP to FAA for formal 90+ Day Review
- Submit Draft AMP to FAA for review.
- Submit Final AMP Report & ALP to Lewis County and FAA for approval (ALP signature)

