

# Lewis County Comprehensive Plan Periodic Update



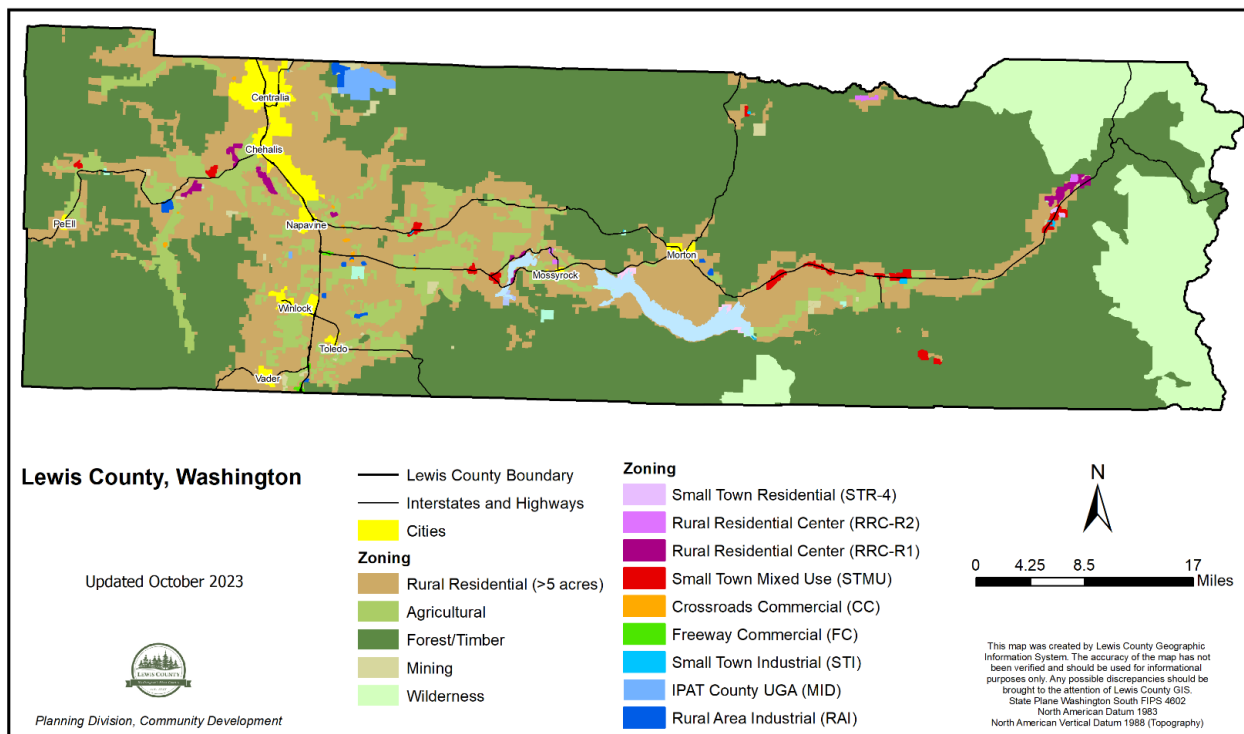
Photo Credit: White Pass Scenic Byway

## What is a Comprehensive Plan?

A comprehensive plan is a compass that guides how a community, like a city or county, grows and develops over the next 20-year. It addresses topics including housing, transportation, business and employment, parks, agriculture, forestry and environmental resources. Comprehensive plans must meet the requirements of the Washington State Growth Management Act (GMA); however, there is flexibility in how those requirements are met.

## Why is the Comprehensive Plan being updated?

Every ten years, counties and cities in Washington State are required to update their comprehensive plans. Counties and cities must address changes in the GMA since the last update, which was 2017, as well as changes in the community such as population growth. Lewis County and each city in the county must complete periodic update by June 30, 2025.

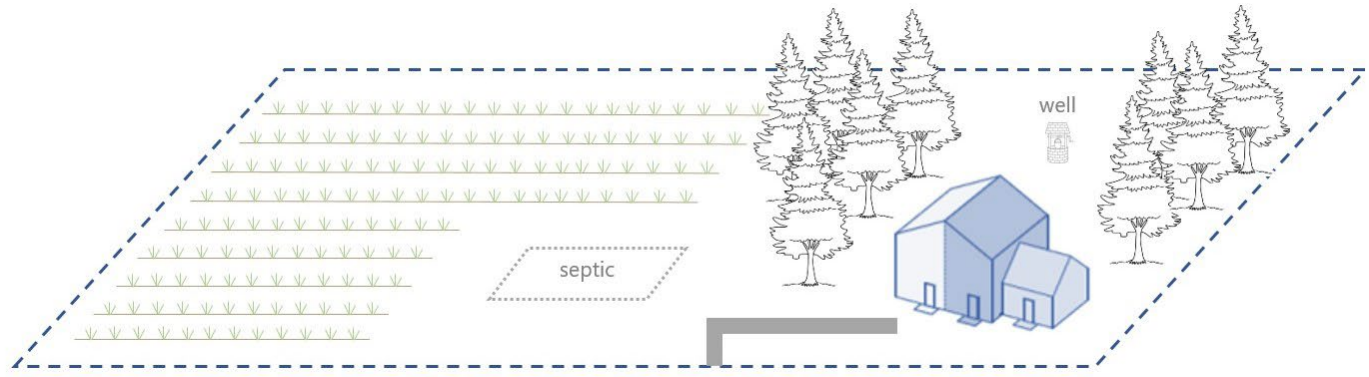


Lewis County, WA Generalize Zoning Designations



## What priorities are being addressed in the update?

Housing is one of the top priorities. Lewis County and each city in the county must update policies and rules to allow housing options that are affordable at all income levels (per House Bill 1220). It will be important to find tools to help people live and work in the county, particularly people who make lower-to-middle incomes. Below is an example of an alternative being considered by Lewis County.



*DRAFT Rural Housing Alternatives Concept – Duplex and attached ADU*

Economic development is another high priority in Lewis County. Interstate 5, and access to rail and port facilities, positions Lewis County well to add industries with employment options that provide a living-wage.

A new change to the GMA is a requirement to address climate change. Climate change has a big impact on natural hazards in Lewis County including flooding and wildfire. The Lewis County Hazard Management Plan is being updated along with the comprehensive plan.

Lewis County staff are also seeking the community's input on your priorities and ideas about the future of the county. Please send those to Mindy Brooks at [mindy.brooks@lewiscountywa.gov](mailto:mindy.brooks@lewiscountywa.gov).

## How can you be involved?

Lewis County Department of Community Development is hosting community meetings throughout the county in October through January. The meeting dates, times and locations will be provided on the webpage by scanning the QR code below. There will also be online surveys and other ways to provide input that will be shared through the webpage, local newspaper and social media.

## More information

Mindy Brooks  
360-740-2610  
[mindy.brooks@lewiscountywa.gov](mailto:mindy.brooks@lewiscountywa.gov)

