



Community Development

2025 NE Kresky Ave

Chehalis, WA 98532

Phone: (360) 740-1146

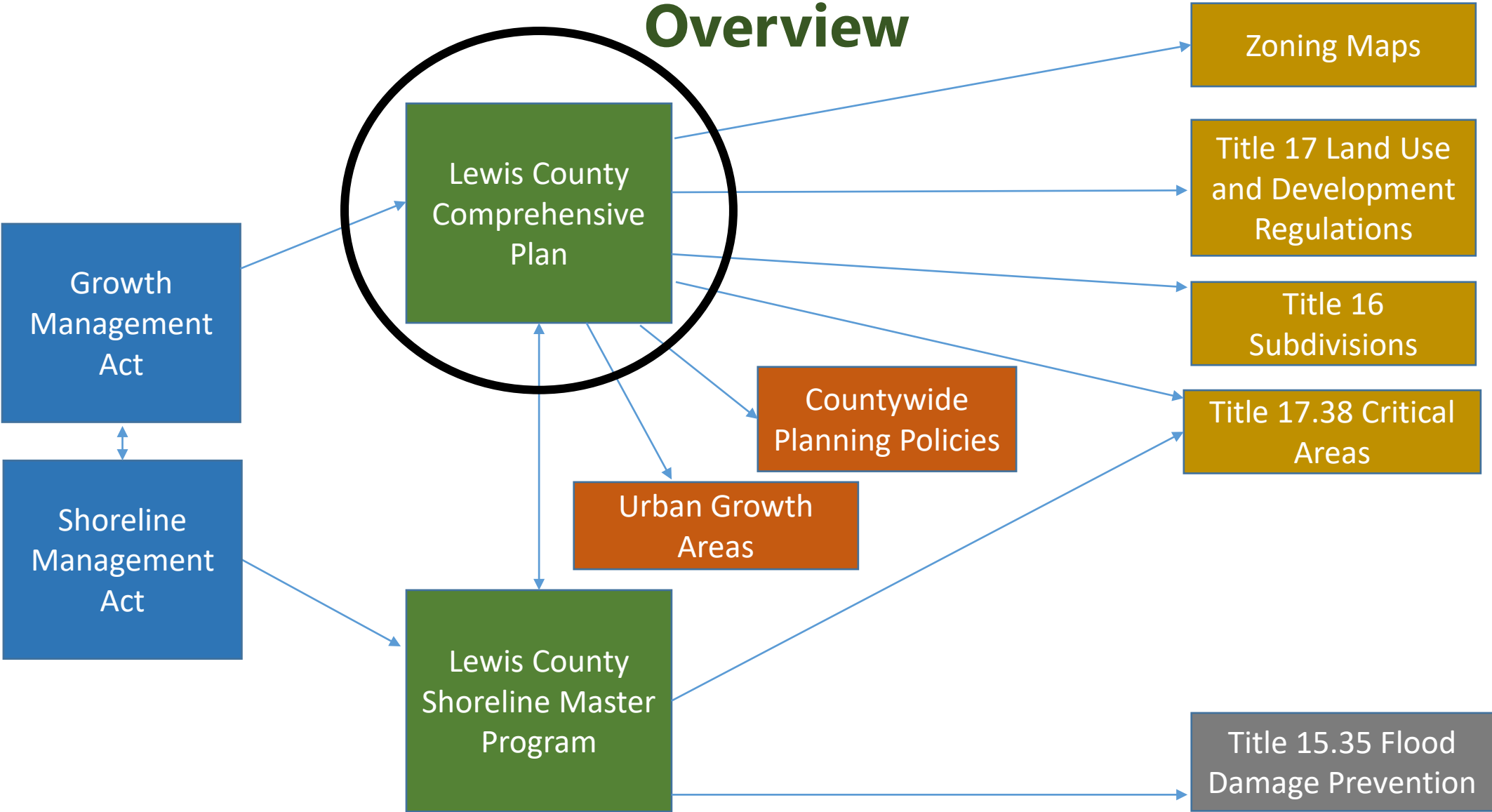
Comprehensive Plan Periodic Update – Work Plan

**Joint Planning Commission/Board of County Commissioners
Workshop**

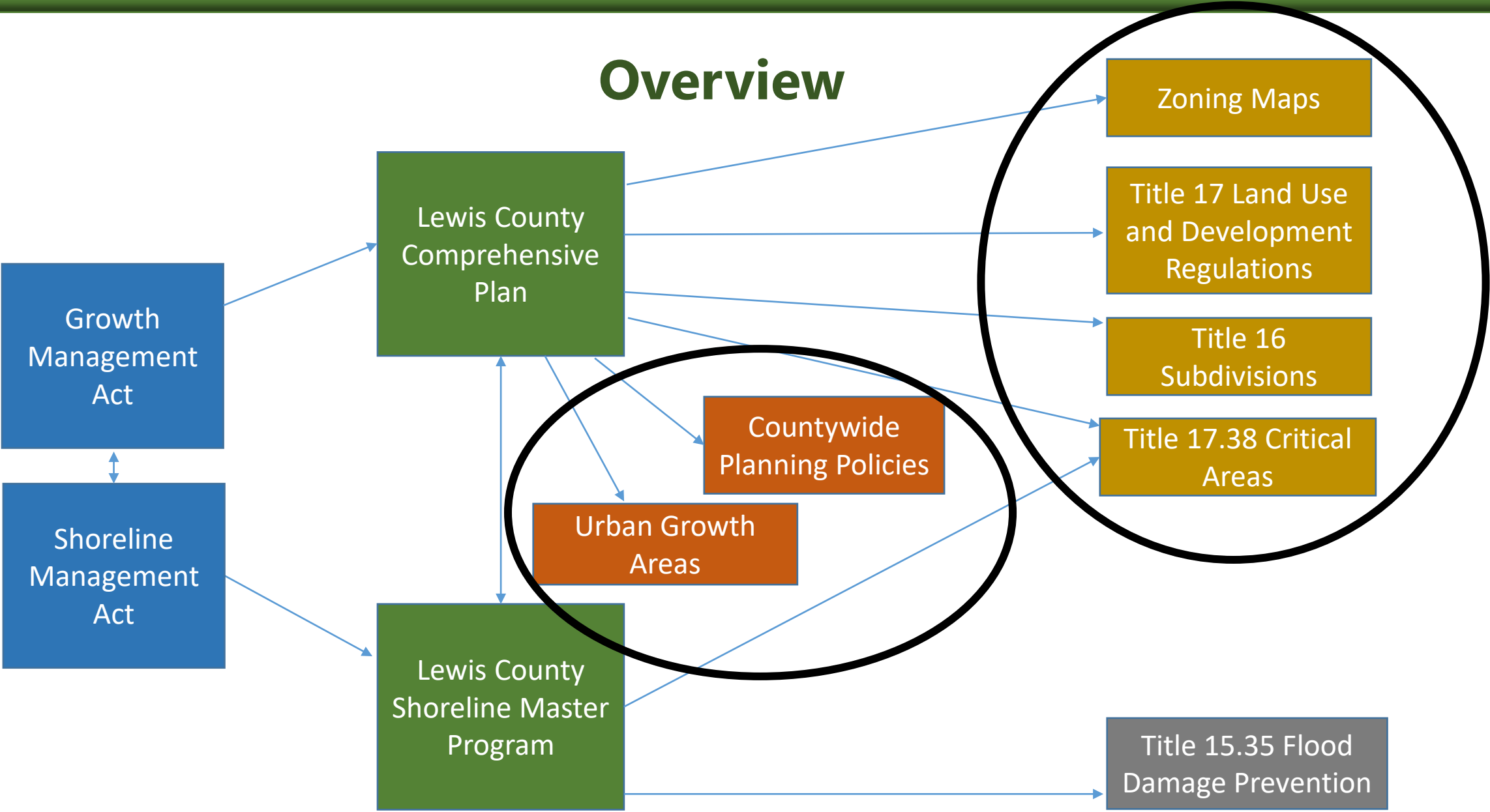
September 26, 2023



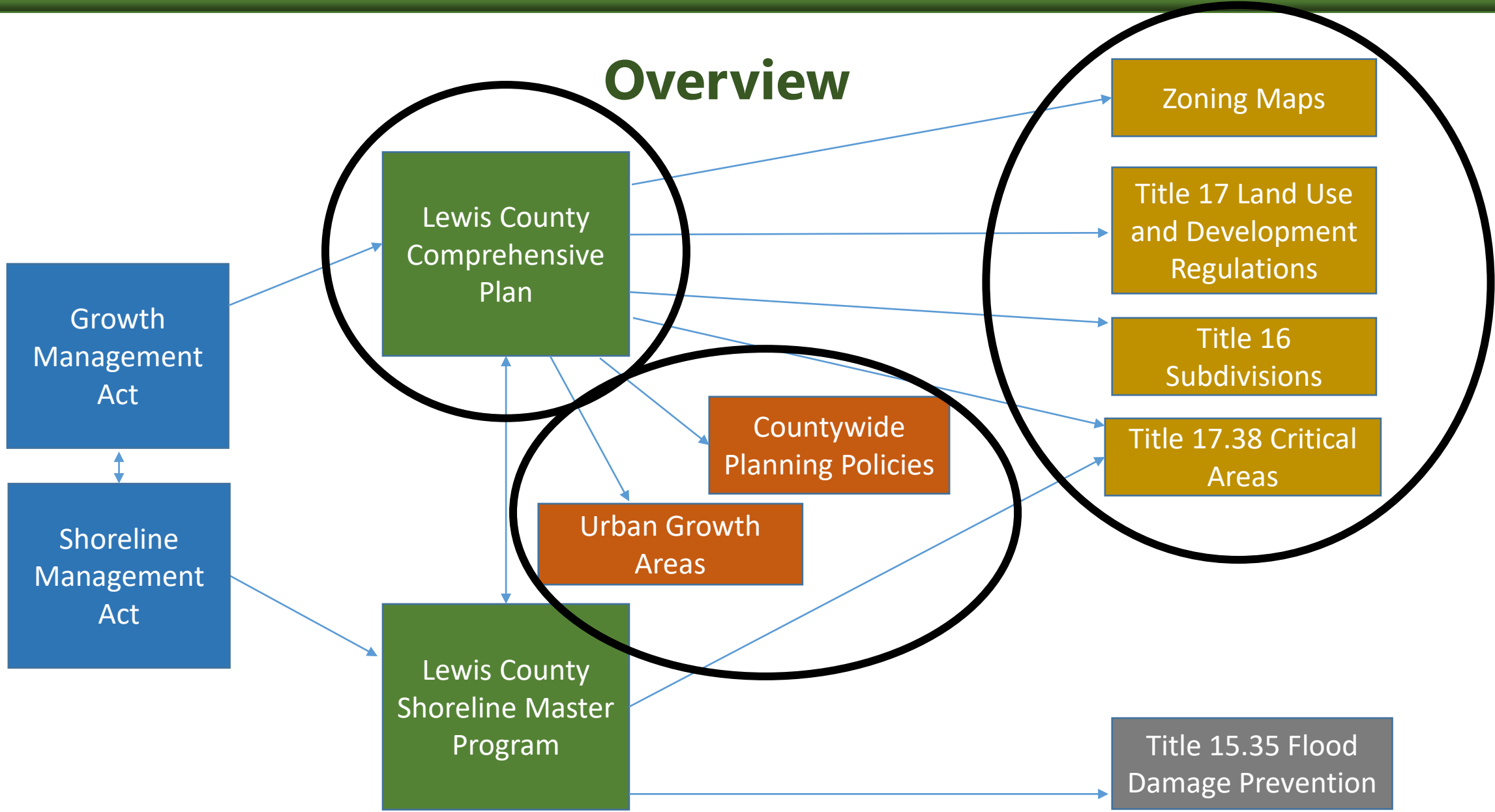
Overview



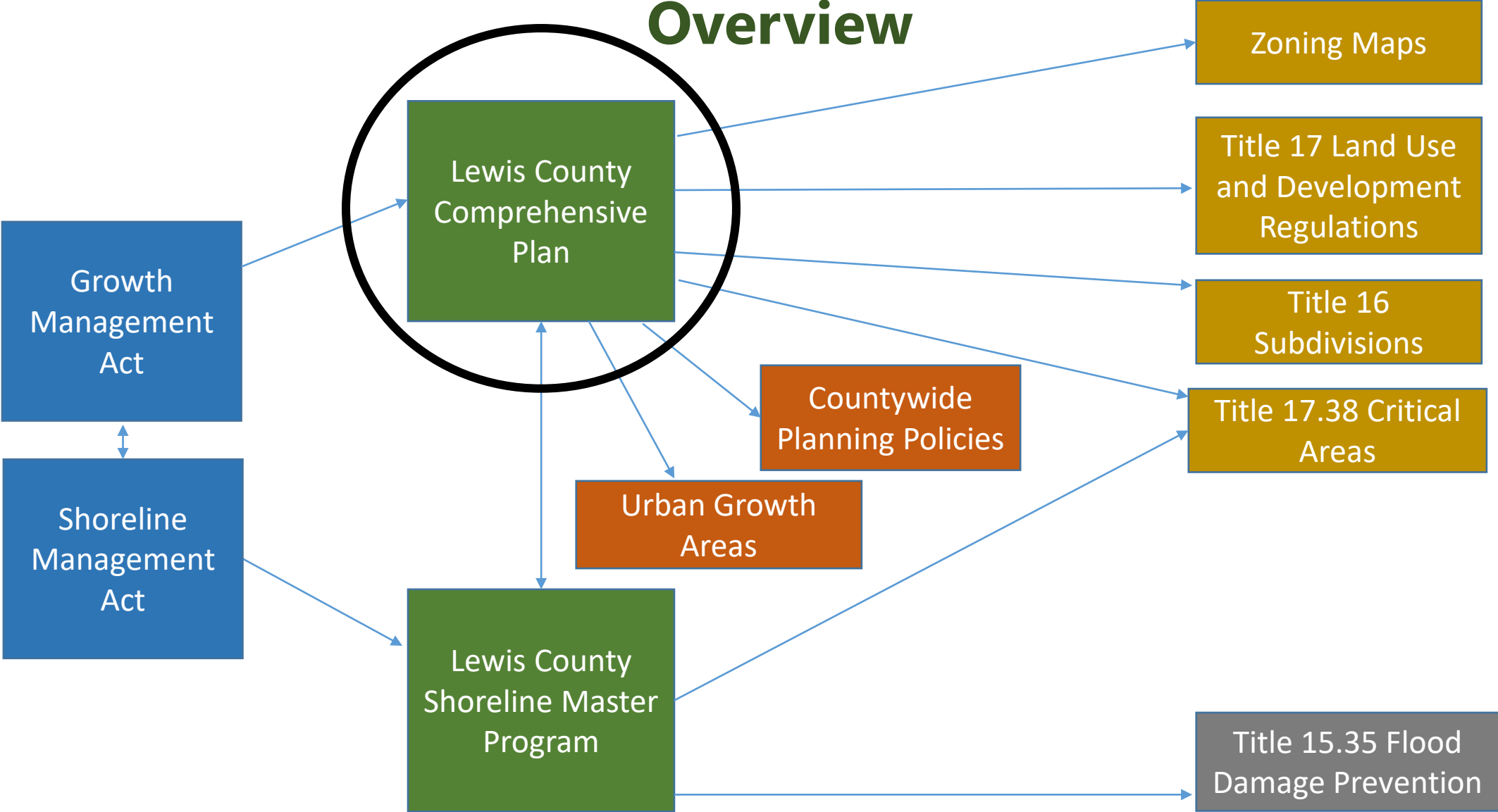
Overview



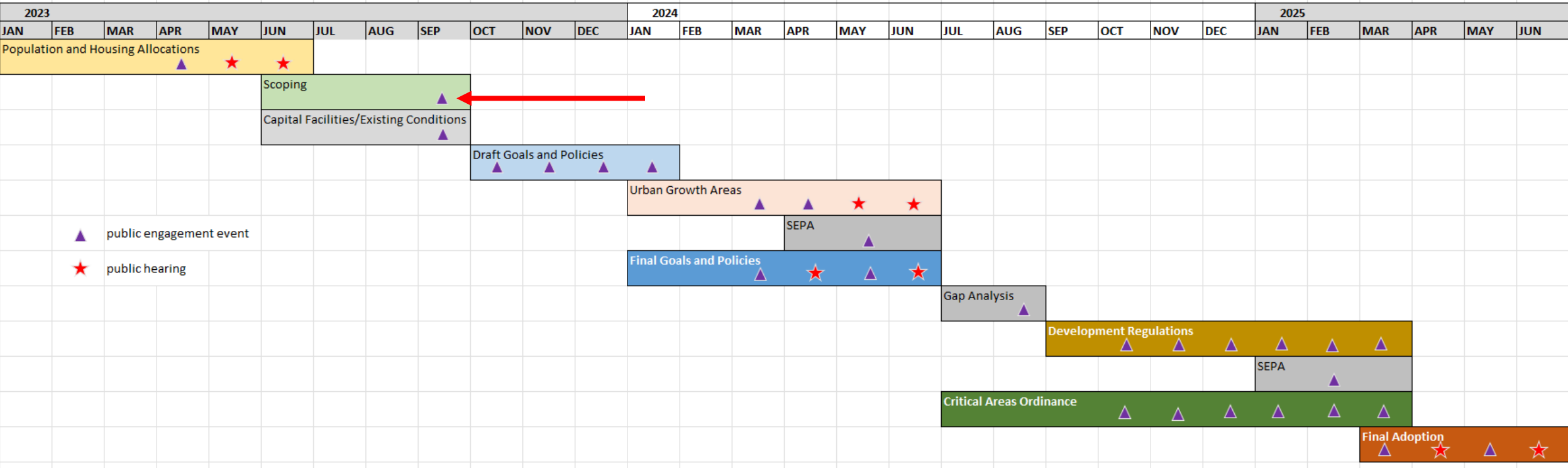
Overview



Overview



Schedule & Public Engagement



Goals and Policies

RCW 36.70A.070 – Mandatory Elements

- Land use
- Housing
- Capital Facilities and Utilities
- Rural*
 - Resources Lands (ag, forestry, mining)
 - Critical Areas
- Transportation
- Economic Development
- Parks and Recreation
- Climate Change**



Goals and Policies



LAND USE ELEMENT



<https://lewiscountywa.gov/departments/community-development/adopted-plans/>



Goals and Policies – Land Use

Goal – Ensure that rural development is provided with appropriate rural services and facilities

Policy – Coordinate the review of rural development with rural water systems, fire districts, and school districts. This coordination is intended to assure that new uses have adequate facilities in place concurrent with development or are able to develop adequate mitigation agreements when upgrades are necessary to meet current standards.

Goal – Permit master planned resorts, or self-contained and fully integrated planned unit developments, in settings of significant natural amenities.

Policy - Verify that all proposed master planned resorts meet the requirements in 36.70A.360.



Goals and Policies – Housing

Goal – Ensure concentrations of housing units are located close to transportation, employment, shopping, and daily activities, and adequate capital facilities and utilities are present for the dwellings.

Policy – Consider access to transportation and proximity to employment, shopping and community services in planning the location of new housing.



Goals and Policies – Economic Development

Goal – Target certain industry sectors as high priorities for economic development.

Policy – Support economic development activities that pursue industries, businesses, and jobs that are well-suited for Lewis County.

Goal – Encourage energy-related industries and facilities in Lewis County.

Policy – Support the creation of new energy generation facilities, and the establishment of businesses that harness the power of renewable natural resources.

Goal – Encourage vital natural resource industries in Lewis County.

Policy – Maintain the existing base of commercial forestland to assure the continued vitality of timber production and processing.



Periodic Update

Not a wholesale rewrite.

Not wordsmithing every goal and policy.

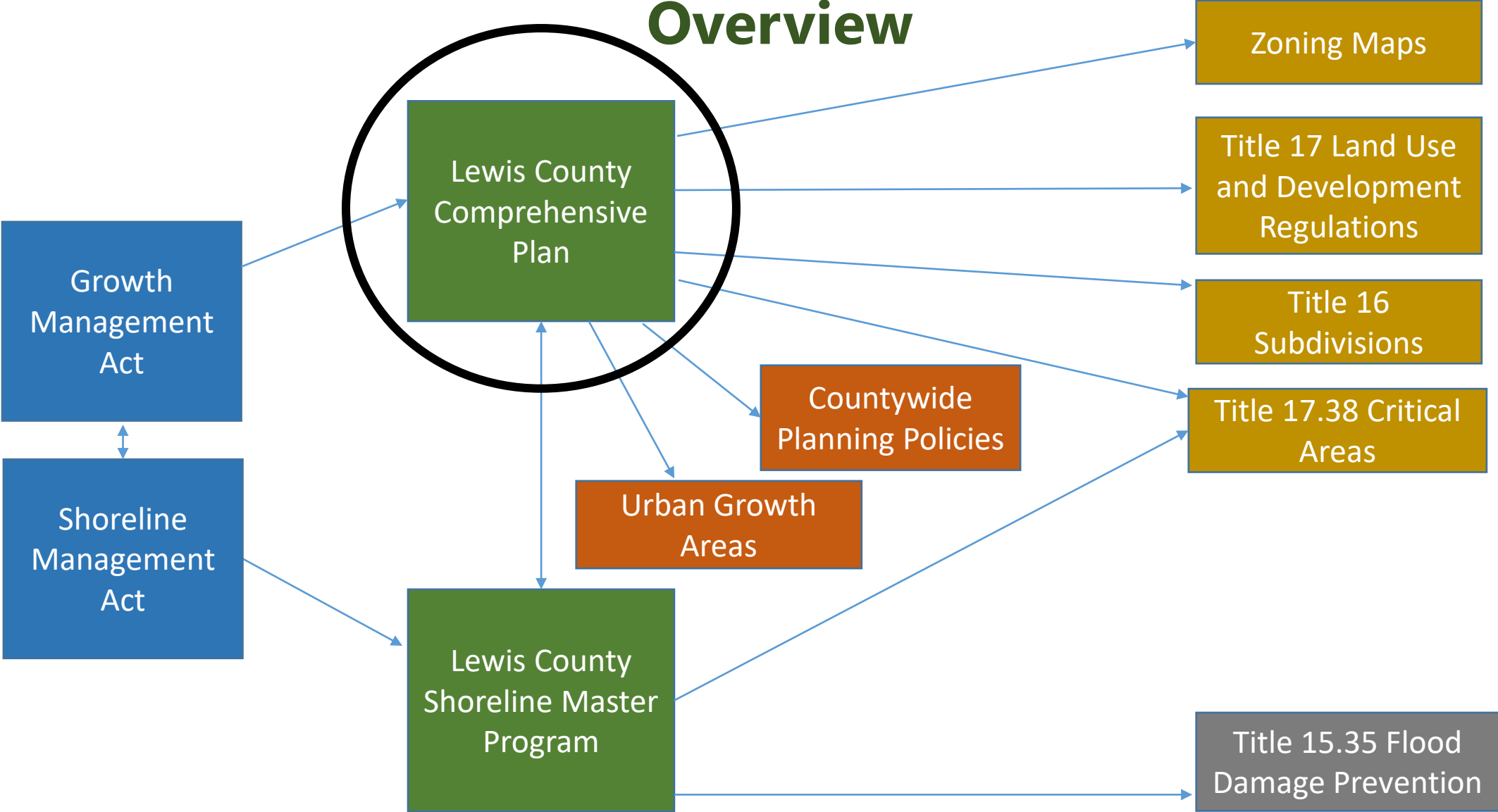
Is ...

Revising or adding goals and policies to implement mandatory updates.

Setting high priorities for other changes. ★



Overview





**This Slide Intentionally
Left Blank**